

Thermo Scientific HistoStar Embedding Workstation Specifications

Dimensions	Embedding module (W, D, H)	25.6 x 23.6 x 16.1 in, 650 x 600 x 410 mm
	Cold plate (W, D, H)	17 x 23.6 x 16.1 in, x 430 x 600 x 410 mm
Weight	Embedding module	55.12 lbs, 25 kg
	Cold plate	44.10 lbs, 20 kg
Capacity, Wax Reservoir		1.32 gallon, 5 litres
Temperatures	Wax reservoir	122 -158°F, 50 -70°C
	Cold spot	41°F, 5°C
	Hot spot	122 -158°F, 50 -70°C
	Tissue storage	122 -158°F, 50 -70°C
	Mold storage	122 -158°F, 50 -70°C
	Cold plate	10.4°F, -12 °C

Ordering Information

Description		Part Number
HistoStar™ Dispensing Unit with Cold Plate*	100-120Vac 50/60Hz	A81000002
HistoStar Cold Plate	100-120Vac 50/60Hz	A81000005
Tamping Tools Kit, Set of 2-1 x 20mm and 1 x 12mm		A81010030
Spatula Kit, Set of 2		A81010031
Cassette Lid Storage Cover		A81010026
Magnifier Assembly		A81010032
Footswitch		AP16629
Electric, Heated Forceps – Red – 1mm tip		A81010033
Electric, Heated Forceps – Yellow – 2mm tip		A81010034
Electric, Heated Forceps – Blue – 4mm tip		A81010035
Document Holder Kit		A81010036

* Includes tamping tools, spatula kit and waste-drain kit.

Efficient embedding requires an efficient paraffin

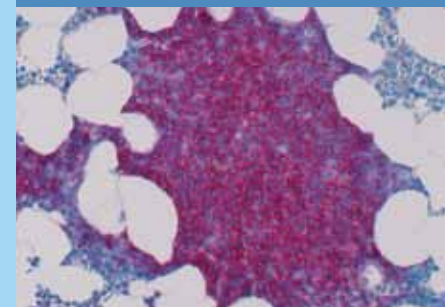


Thermo Scientific HistoPlast Paraffin

Delivery, reliability, unmatched technical support and superior product quality are all part of what you receive with every case of Thermo Scientific HistoPlast Paraffin. Made of paraffin and plastic polymers, these three paraffins deliver excellent processing and yield thin, flat and wrinkle-free sections.

Contact your local Thermo Scientific representative for a side by side comparison.

Description	Quantity	Cat. No.
Histoplast PE	8 x 1 kg bags	8330
Histoplast IM	8 x 1 kg bags	8331
Histoplast LP	8 x 1 kg bags	8332



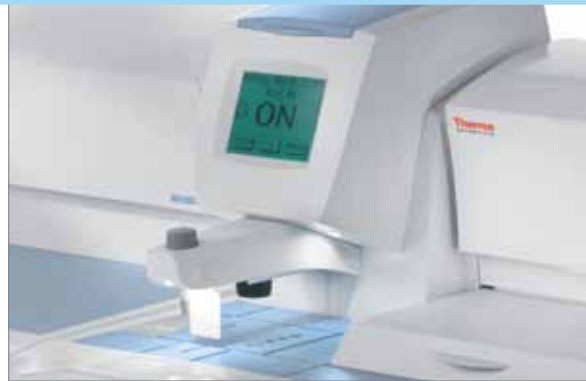
Thermo Scientific HistoStar Embedding Workstation
Be efficient – comfortably!

- Efficient
- Ergonomic
- Well-illuminated
- Integrated ParaTrimmer®

Thermo Scientific HistoStar Embedding Workstation

Well-illuminated, Ergonomic, Efficient

With brightly illuminated work surfaces, cool and contoured arm rests and new features, the Thermo Scientific HistoStar embedding workstation delivers significant improvements in ergonomics and efficiency.



LED lighting – Brightly illuminated work surfaces

Bright Illumination

LED lighting uniformly illuminates the workspace without the clutter of awkward remote lamps. A properly illuminated workspace reduces fatigue and minimizes errors.

- **Lighting intensity is easily user adjustable**
- **Five levels of illumination for both specimen and accessory areas**

Cool and Contoured

All user contact points are smooth and insulated providing a cool and comfortable workspace. Pressure points and uncomfortable heat are eliminated.

High Capacity for High Efficiency

The capacity of the HistoStar™ embedding workstation can keep up with even the busiest laboratories.

- **5 liter paraffin capacity**
- **Cold plate area for 72 base molds**
- **Large heated workspace and specimen holding area**

Any Sample Size Handled with Ease

The HistoStar embedding workstation offers the first adjustable paraffin dispense paddle. A simple adjustment moves the paddle to the most ergonomic position for the user. Even Super Mega Cassettes can be embedded with ease.

Integrated ParaTrimmer®

The HistoStar embedding workstation is the only workstation with a heated wax trimmer built directly into the workspace.

- **Removes excess paraffin at the embedding station**
- **No need for additional equipment**
- **No more wax scrapping at the microtome**

Intuitive User Interface

Large, easy-to-read touch screen display allows quick access to the temperature controls and other parameters. Programmable “sleep” mode saves energy around your workflow.

Dependable Performance

The robust HistoStar embedding workstation design minimizes moving parts, reducing wear and service requirements ensuring dependable performance for years to come.



Ergonomic design – Cool and contoured



High capacity – Maximum productivity



Touch screen – Simple and intuitive



Modular cold plate – Position of optimal workflow

