

‘LABGAS+ ’ - Intelligent Gas Generators

‘LABGAS+ ’, model NG8TF is the latest Nitrogen PSA Laboratory Gas Generators from Noblegen Products.

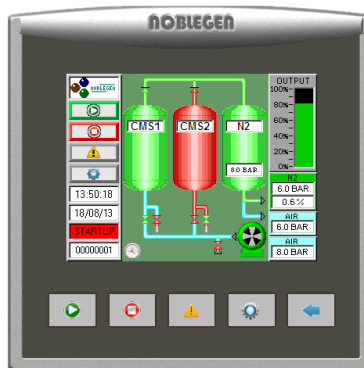
Utilising the reliable and efficient PSA technique of separating Nitrogen, Oxygen and water are used to produce 3 streams of high quality air and nitrogen gases specifically to meet the demands of the AB SCIEX QTRAP, Triple TOF 6600e, X500 QTOF Instruments.

The Generator is controlled using the latest in HMI touch screen technology to display the process in real-time, inlet / outlet pressures, Trend graphs and much more.....



Features

- Internal oil-free air compressor or without compressor models
- Compact and Quiet design
- Auto-run facility (timer)
- Energy saving mode
- Outlet flow indicator (% flow)
- Trend graphs into MS excel
- Alarms with help menu
- Audible service alarm sounder



Colour HMI Touch Screen

Applications

- AB SCIEX QTRAP range

LABGAS+ model NG8TF Triple Flow Air & Nitrogen Generator from Noblegen Products is your reliable and efficient alternative to conventional high pressure cylinder and liquid gas supplies. Taking away the on-going costs, safety considerations and transportation of traditional gas supplies, the ‘LABGAS +’ on-site Nitrogen systems are some of the most advanced and intelligent available. The control system gives the user all the information necessary to ensure an efficient and consistent supply of gas is always available. From the process to flow and alarms, including auto-start / stop function, Trend graphs, service alarm and service records page, there is simply no other laboratory nitrogen system quite like LABGAS +.

The NG8TF is one of the most economical ‘triple flow’ air & nitrogen generators on the market for both purchase price and on-going running / maintenance costs. Together with our unrivalled experience and knowledge of nitrogen gas generators with 1000’s running world-wide supported by our national and international partners.

Air & Nitrogen Outlet Flowrate - NI/min vs Oxygen Concentration

| Model | Curtain Gas (N2) | | | Source Gas (Air) | | | Exhaust Gas (Air) | | |
|-------|------------------|---------|-----------|------------------|----------|---------------|-------------------|----------|---------------|
| | N2 press | N2 flow | N2 purity | Air press | Air flow | Air dew-point | Air press | Air flow | Air dew-point |
| NG8TF | 60.0 | 18.0 | 99% | 105.0 | 26.0 | -40°C | 55.0 | 25.0 | -40°C |

Specification based on 9 barg (130 psig) air inlet pressure @ 20°-25°C (68°-77°F) ambient air temperature. For inlet pressures and ambient air temperature outside these conditions please contact the Noblegen technical department.

Specifications

| | |
|----------------------------|-------------------------------------|
| Ambient Temp Range | 5-40 °C (41-104 °F) |
| Certification | ISO9001:2008 |
| Start-up time | <15 mins |
| Nitrogen Outlet Particles | <0.01 micron |
| Power supply | 230v A.C. single phase 50Hz (1.5Kw) |
| Socket Inlet | IEC type C14 (fused) 6.3A max |
| Air Inlet Requirement (-0) | 9 bar g (130 psig) – 102 LPM |
| Inlet / Outlet Connections | 1/4" BSPP x 3 |
| Process Pipe-work | Copper Pipe |

Dimensions and Weights

| Enclosure Size 1 | Length | Width | Height | -0 Weight | -1 Weight |
|------------------|--------|-------|--------|-----------|-----------|
| | 600 | 600 | 1,300 | 135 | 175 |

Note: Dimensions in mm, weights in kgs.

