

eppendorf



Simply Better Pipetting

Eppendorf Xplorer® and Eppendorf Xplorer® plus—the electronic pipettes



»Work Intuitively.«

People who give 100 % every day deserve the best tools and the best equipment. You work on demanding problems, and important decisions depend on the results of your work. Your standard is extremely high and your performance is professional.

Eppendorf Xplorer and Eppendorf Xplorer plus

The Eppendorf Xplorer pipettes are electronic single, 8 and 12 channel pipettes designed to aspirate and dispense liquid volumes from 0.5µL to 10mL while eliminating many of the potential error risks associated with manual pipetting. The intuitive operating concept and ergonomic design, supported by Eppendorf PhysioCare Concept® set new standards in

simplicity, precision and reproducibility. The Xplorer pipettes are the ideal instrument if you need precisely adjustable parameters, reproducible and accurate results while experiencing fatigue-free pipetting and always maintaining full control over pipetting procedures.

Everything at a glance and with one click

You can easily select all functions with the practical selection dial. The clearly arranged color display of all adjustable parameters means no more getting lost in submenus! An optional help function is available in the language of your choice.



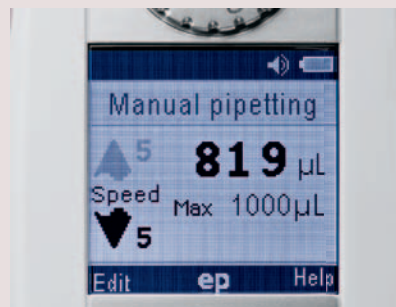
Simple logic

Logical pipette operation with the unique multifunction rocker: The switch enables precise control of liquid aspiration and dispensing. It follows the unique »Up is up and down is down« principle: Press the rocker up to aspirate liquids and down to dispense liquids. When the tip is ejected, the piston automatically returns to the zero position.



Everything under control

For slow pipetting, loading gels or aspirating supernatant, complete control of the piston movement is necessary, and easily controlled with the Xplorer/plus. With the Eppendorf Xplorer pipettes, the »Manual pipetting« function and operational rocker make precise and flexible directional control of the piston possible. You're in control!



Fatigue-Free Pipetting

Eppendorf PhysioCare Concept

Eppendorf Xplorer pipettes were developed by renowned ergonomics experts according to the high standards set by the PhysioCare Concept.

The perfect balance and hand rest of the Eppendorf Xplorer pipettes guarantee a low-impact position and efficient means for relaxation periods. The handle and size of the control buttons feature a user-friendly design, irrespective of hand size.

Improved view

All information on the pipette display is clearly readable, regardless of your hand position or work position.

The optimally angled high-resolution display with a controllable brightness setting guarantee a comfortable work environment.

Improved balance

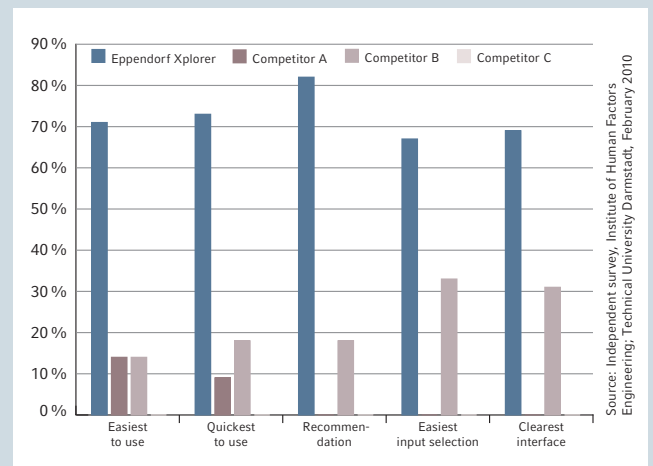
The more energy you expend, the more quickly your energy reserves are depleted. But because your performance is the most valuable resource, we have significantly reduced the weight and required operating force of the Eppendorf Xplorer pipettes.



»Ergonomics means to never feel the effects of hard work!«



Survey operating concept



Reliably Reproducible Results

When tips are optimally seated

The spring-loaded tip cone of the Eppendorf Xplorer pipettes provides maximum tightness with minimal attachment force, noticeably reducing the energy required for ejection without compromising fit. Because the tip always sits in the same position, the reproducibility of your results is optimized.

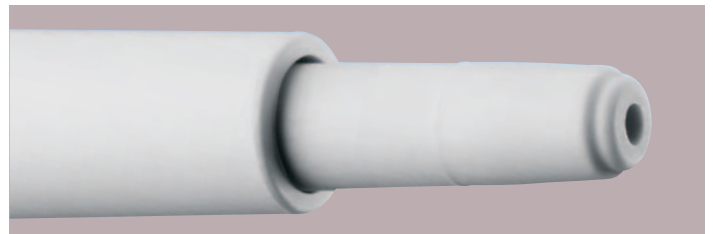
Perfect pipetting every day

Reproducible results are essential for your laboratory work! Of course, results are affected by many factors. For example, by signs of fatigue or the aspiration and dispensing speed of the liquid. With the Eppendorf Xplorer pipettes, all relevant factors, e.g., volume, speed, mixing cycles, etc., can now be precisely and reproducibly set. Every day, consistently perfect.

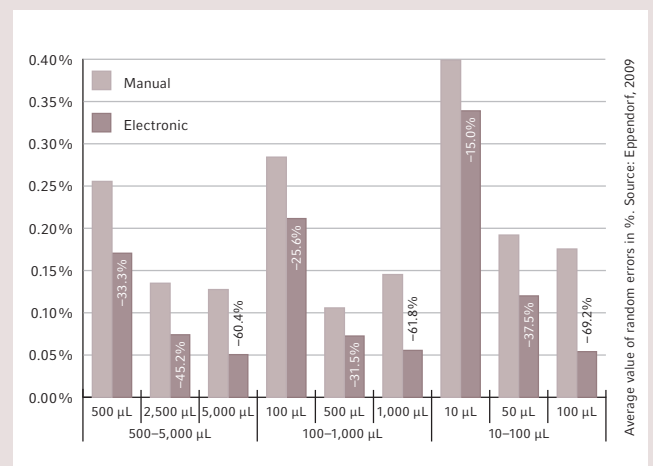
Individual pipetting everywhere

No matter where you are in the world, or which liquid you're using: Eppendorf Xplorer pipettes can be individually adjusted to your environment and requirements.

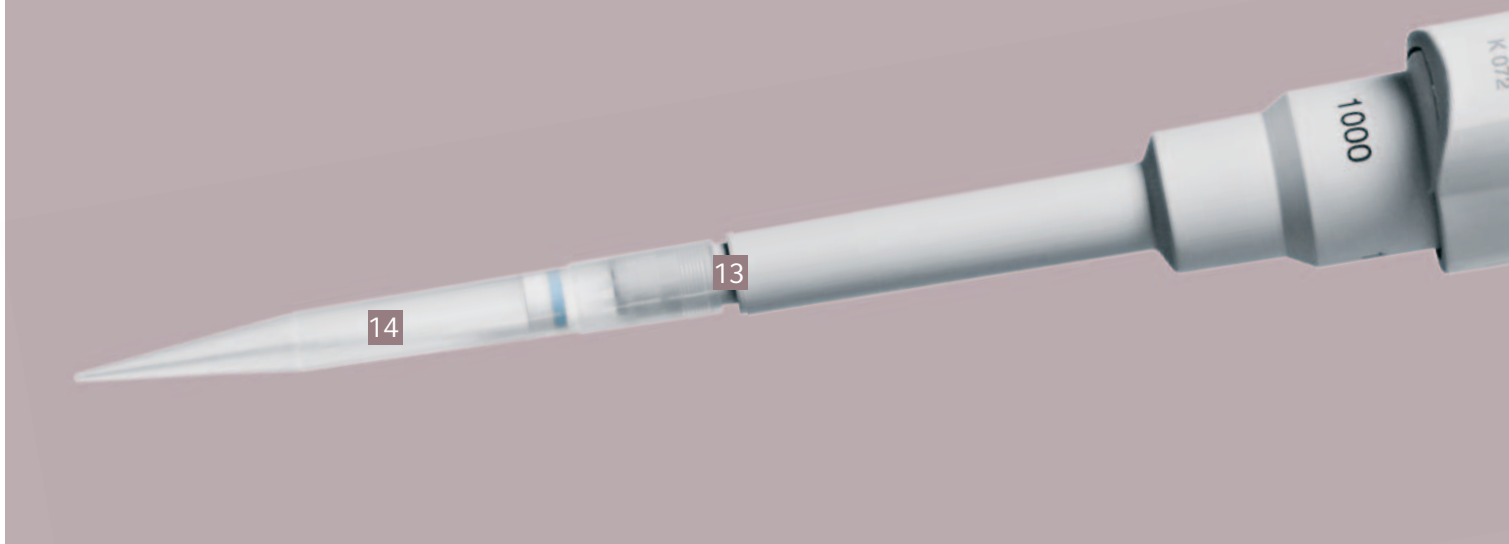
For example, you can adjust to an altitude or specific liquid density. Your unit can also be personally labeled to prevent an accidental exchange of your Xplorer.



Comparison random errors: manual vs. electronic pipetting



Electronic Pipetting—Redefined



1 Multifunctional rocker

Simple logic: the »Up is up and down is down« principle

2 Selection dial

All functions at a glance and easily selectable

3 Innovative ejector

After tip ejection, the piston automatically returns to zero position for continuous work

4 Function control softkeys

Edit and Help at the push of a button

5 Convenient handle

Ergonomic design according to the PhysioCare Concept

6 Modern color display

Self-explanatory display—without submenus

7 Powerful battery

Long usage period without charging

8 Separate power socket

Work can continue while charging

9 History function

Automatically saves the last 10 sets of parameters (can be selected as an alternative to the help function)

10 Multilingual menu navigation

Various languages available for selection



Intuitive and fast pipetting with
Eppendorf Xplorer 8 and 12 channel pipettes

> www.eppendorf.com/xplorer



11 Ergonomic display angle

Optimal readability in every position

12 Practical charging contacts

Pipette can also be charged with the charging stand

13 Spring loaded tip cone

Ensures tips are optimally seated for more reproducible results. (single and multichannels)

14 Benefit from the high quality of Eppendorf epT.I.P.S.[®] pipette tips (More information: www.eppendorf.com/consumables)



reddot design award
best of the best 2010



Easy documentation with Eppendorf TrackIT NEW

- > Including RFID Reader and Software
- > Embedded RFID chip contains all relevant data regarding the pipette (serial no., article no. etc.)
- > Ability to add your own data (e.g. calibration time and location)
- > Simple identification and documentation

> www.eppendorf.com/trackit

An Intelligent Pipette

The future in your hands

The protection of resources, saving time and guaranteed precision are important aspects of lab work everywhere. In some areas the requirements even go beyond these high standards—every second counts and errors can lead to severe consequences. Eppendorf Xplorer plus was developed for the highest of these requirements!

With the additional intelligent applications, adjustable fixed-volumes and individual programming tasks are performed much faster and easier. The Xplorer plus also includes a history function that automatically saves the last parameters for faster handling! A password can be entered to guarantee the highest degree of protection for your programming and settings.

To ensure the adherence of service intervals and thus guarantee the accuracy of your results, the Xplorer plus offers an integrated service reminder. You can choose either a reminder based on the period of time or on the frequency of use.

The extended version of the Eppendorf Xplorer is the perfect choice for all users who simply need advanced speed, safety and reliability every day.



Eppendorf Xplorer[®] plus

Discover the Exciting Extras



1 On/off switch

Switches the pipette off during longer periods of inactivity

2 Additional applications

Aspirating, diluting, sequential dispensing and reverse pipetting

3 Display of service intervals

Pipette maintenance reminder function, based on time or frequency of use as desired

4 Individual speed setting

Adjust speed of aspirate and dispense to improve precision and accuracy

5 Programming

One-time programming of sequences for simple handling of complex processes

6 Individual fixed volume setting

Desired volume can be saved and recalled for quick working with kits

7 Password protection

Protects programming and adjustment

For Experts — By Experts

The perfect team

Every valuable sample deserves the best treatment.

Our epT.I.P.S. pipette tips set new standards in manufacturing, fit, design and ejection effort and offer a solution for any specific requirement your samples may have! epT.I.P.S. LoRetention, for example, feature pearl effect technology for best results when pipetting detergent-containing solutions.

Maximum protection from aerosols and biomolecules for both your pipette and sample are achieved with our ep Dualfilter T.I.P.S.® and epDualfilter T.I.P.S.® Sealmax with their unique two-phase filter technology.



epT.I.P.S. LoRetention



ep Dualfilter T.I.P.S.



epServices
for premium performance

We take care of your pipette

Regular maintenance, calibration and adjustment of your pipettes guarantees precision and prevents errors for the highest quality results. We offer a wide selection of service options—from simple quick calibration to customer-specific GLP-/GMP-conformity calibration services according to national and international standards.

> More details and local offers:
www.eppendorf.com/epservices

Ordering information Eppendorf Xplorer®

Eppendorf Xplorer®, single-channel (incl. charger)

Volume range	Dispensing button color	Volume	Systematic error		Random error		International order no.	North America catalog no.
0.5–10 µL	■ medium gray (for epT.I.P.S.® 20 µL)	1 µL	±2.5 %	±0.025 µL	±1.8 %	±0.018 µL	4861 000.015	4861000015
		5 µL	±1.5 %	±0.075 µL	±0.8 %	±0.04 µL		
		10 µL	±1.0 %	±0.1 µL	±0.4 %	±0.04 µL		
5–100 µL	■ yellow (for epT.I.P.S.® 200 µL)	10 µL	±2.0 %	±0.2 µL	±1.0 %	±0.1 µL	4861 000.023	4861000023
		50 µL	±1.0 %	±0.5 µL	±0.3 %	±0.15 µL		
		100 µL	±0.8 %	±0.8 µL	±0.2 %	±0.2 µL		
15–300 µL	■ orange (for epT.I.P.S.® 300 µL)	30 µL	±2.5 %	±0.75 µL	±0.7 %	±0.21 µL	4861 000.031	4861000031
		150 µL	±1.0 %	±1.5 µL	±0.3 %	±0.45 µL		
		300 µL	±0.6 %	±1.8 µL	±0.2 %	±0.6 µL		
50–1 000 µL	■ blue (for epT.I.P.S.® 1 000 µL)	100 µL	±3.0 %	±3 µL	±0.6 %	±0.6 µL	4861 000.040	4861000040
		500 µL	±1.0 %	±5 µL	±0.2 %	±1 µL		
		1 000 µL	±0.6 %	±6 µL	±0.2 %	±2 µL		
0.25–5 mL	■ purple (for epT.I.P.S.® 5 mL)	500 µL	±3.0 %	±15 µL	±0.6 %	±3 µL	4861 000.058	4861000058
		2 500 µL	±1.2 %	±30 µL	±0.3 %	±6.25 µL		
		5 000 µL	±0.6 %	±30 µL	±0.15 %	±7.5 µL		
0.5–10 mL	■ turquoise (for epT.I.P.S.® 10 mL)	1 000 µL	±3.0 %	±30 µL	±0.6 %	±6 µL	4861 000.066	4861000066
		5 000 µL	±0.8 %	±40 µL	±0.2 %	±10 µL		
		10 000 µL	±0.6 %	±60 µL	±0.15 %	±15 µL		

Eppendorf Xplorer®, multi-channel (incl. charger)

Volume range	Dispensing button color	Volume	Systematic error		Random error		International order no.	North America catalog no.
0.5–10 µL	■ medium gray (for epT.I.P.S.® 20 µL)	1 µL	±5.0 %	±0.05 µL	±3.0 %	±0.03 µL	8-channel 4861 000.104	8-channel 4861000104
		5 µL	±3.0 %	±0.15 µL	±1.5 %	±0.075 µL	12-channel 4861 000.112	12-channel 4861000112
		10 µL	±2.0 %	±0.2 µL	±0.8 %	±0.08 µL		
5–100 µL	■ yellow (for epT.I.P.S.® 200 µL)	10 µL	±2.0 %	±0.2 µL	±2.0 %	±0.2 µL	8-channel 4861 000.120	8-channel 4861000120
		50 µL	±1.0 %	±0.5 µL	±0.8 %	±0.4 µL	12-channel 4861 000.139	12-channel 4861000139
		100 µL	±0.8 %	±0.8 µL	±0.25 %	±0.25 µL		
15–300 µL	■ orange (for epT.I.P.S.® 300 µL)	30 µL	±2.5 %	±0.75 µL	±1.0 %	±0.3 µL	8-channel 4861 000.147	8-channel 4861000147
		150 µL	±1.0 %	±1.5 µL	±0.5 %	±0.75 µL	12-channel 4861 000.155	12-channel 4861000155
		300 µL	±0.6 %	±1.8 µL	±0.25 %	±0.75 µL		
50–1 200 µL	■ medium green (for epT.I.P.S.® 1 200 µL)	120 µL	±6.0 %	±7.2 µL	±0.9 %	±1.08 µL	8-channel 4861 000.163	8-channel 4861000163
		600 µL	±2.7 %	±16.2 µL	±0.4 %	±2.4 µL	12-channel 4861 000.171	12-channel 4861000171
		1 200 µL	±1.2 %	±14.4 µL	±0.3 %	±3.6 µL		

The data for systematic and random deviations only applies when using Eppendorf epT.I.P.S.® pipette tips.
Technical specifications subject to change. Errors and omissions excepted.

Accessories

	International order no.	North America catalog no.
Eppendorf TrackIT	3903 000.014	3903000014
Charging stand for 1 pipette	4880 000.000	4880000000
Charging stand for 4 pipettes (incl. charging adapter)	4880 000.026	4880000026
Wall mount for Xplorer®	4861 615.001	4861615001

Ordering information Eppendorf Xplorer® plus

Eppendorf Xplorer® plus, single-channel (incl. charger)

Volume range	Dispensing button color	Volume	Systematic error		Random error		International order no.	North America catalog no.
0.5–10 µL	■ medium gray (for epT.I.P.S.® 20 µL)	1 µL	±2.5 %	±0.025 µL	±1.8 %	±0.018 µL	4861 000.708	4861000708
		5 µL	±1.5 %	±0.075 µL	±0.8 %	±0.04 µL		
		10 µL	±1.0 %	±0.1 µL	±0.4 %	±0.04 µL		
5–100 µL	■ yellow (for epT.I.P.S.® 200 µL)	10 µL	±2.0 %	±0.2 µL	±1.0 %	±0.1 µL	4861 000.716	4861000716
		50 µL	±1.0 %	±0.5 µL	±0.3 %	±0.15 µL		
		100 µL	±0.8 %	±0.8 µL	±0.2 %	±0.2 µL		
15–300 µL	■ orange (for epT.I.P.S.® 300 µL)	30 µL	±2.5 %	±0.75 µL	±0.7 %	±0.21 µL	4861 000.724	4861000724
		150 µL	±1.0 %	±1.5 µL	±0.3 %	±0.45 µL		
		300 µL	±0.6 %	±1.8 µL	±0.2 %	±0.6 µL		
50–1000 µL	■ blue (for epT.I.P.S.® 1000 µL)	100 µL	±3.0 %	±3 µL	±0.6 %	±0.6 µL	4861 000.732	4861000732
		500 µL	±1.0 %	±5 µL	±0.2 %	±1 µL		
		1000 µL	±0.6 %	±6 µL	±0.2 %	±2 µL		
0.25–5 mL	■ purple (for epT.I.P.S.® 5 mL)	500 µL	±3.0 %	±15 µL	±0.6 %	±3 µL	4861 000.740	4861000740
		2500 µL	±1.2 %	±30 µL	±0.3 %	±6.25 µL		
		5000 µL	±0.6 %	±30 µL	±0.15 %	±7.5 µL		
0.5–10 mL	■ turquoise (for epT.I.P.S.® 10 mL)	1000 µL	±3.0 %	±30 µL	±0.6 %	±6 µL	4861 000.759	4861000759
		5000 µL	±0.8 %	±40 µL	±0.2 %	±10 µL		
		10000 µL	±0.6 %	±60 µL	±0.15 %	±15 µL		

Eppendorf Xplorer® plus, multi-channel (incl. charger)

Volume range	Dispensing button color	Volume	Systematic error		Random error		International order no.	North America catalog no.
0.5–10 µL	■ medium gray (for epT.I.P.S.® 20 µL)	1 µL	±5.0 %	±0.05 µL	±3.0 %	±0.03 µL	8-channel	8-channel
		5 µL	±3.0 %	±0.15 µL	±1.5 %	±0.075 µL	4861 000.767	4861000767
		10 µL	±2.0 %	±0.2 µL	±0.8 %	±0.08 µL	12-channel 4861 000.775	12-channel 4861000775
5–100 µL	■ yellow (for epT.I.P.S.® 200 µL)	10 µL	±2.0 %	±0.2 µL	±2.0 %	±0.2 µL	8-channel	8-channel
		50 µL	±1.0 %	±0.5 µL	±0.8 %	±0.4 µL	4861 000.783	4861000783
		100 µL	±0.8 %	±0.8 µL	±0.25 %	±0.25 µL	12-channel 4861 000.791	12-channel 4861000791
15–300 µL	■ orange (for epT.I.P.S.® 300 µL)	30 µL	±2.5 %	±0.75 µL	±1.0 %	±0.3 µL	8-channel	8-channel
		150 µL	±1.0 %	±1.5 µL	±0.5 %	±0.75 µL	4861 000.805	4861000805
		300 µL	±0.6 %	±1.8 µL	±0.25 %	±0.75 µL	12-channel 4861 000.813	12-channel 4861000813
50–1200 µL	■ medium green (for epT.I.P.S.® 1200 µL)	120 µL	±6.0 %	±7.2 µL	±0.9 %	±1.08 µL	8-channel	8-channel
		600 µL	±2.7 %	±16.2 µL	±0.4 %	±2.4 µL	4861 000.821	4861000821
		1200 µL	±1.2 %	±14.4 µL	±0.3 %	±3.6 µL	12-channel 4861 000.830	12-channel 4861000830

The data for systematic and random deviations only applies when using Eppendorf epT.I.P.S.® pipette tips.
Technical specifications subject to change. Errors and omissions excepted.

Your local distributor: www.eppendorf.com/contact

Eppendorf AG · 22331 Hamburg · Germany · eppendorf@eppendorf.com · www.eppendorf.com
Eppendorf North America, Inc. · Phone: 800-645-3050 · info@eppendorf.com · www.eppendorfn.com
Eppendorf Canada Ltd. · Phone: 800-263-8715 · canada@eppendorf.com · www.eppendorf.ca

www.eppendorf.com/xplorer

Red Dot Design Award™ logo is a trademark of Red Dot GmbH & Co. KG, Germany.
Eppendorf®, the Eppendorf logo, Eppendorf Xplorer®, ep Dualfilter T.I.P.S.®, Eppendorf PhysioCare Concept®, PhysioCare Concept® and epT.I.P.S.® are registered trademarks of Eppendorf AG, Germany. epServices™ Logo is a trademark of Eppendorf AG, Germany.
All rights reserved, including graphics and photos.
Order no.: A486112 020/GB08/17,ST/0214/CCHH/STEF · Printed climate neutrally in Germany. Copyright © 2014 by Eppendorf AG.