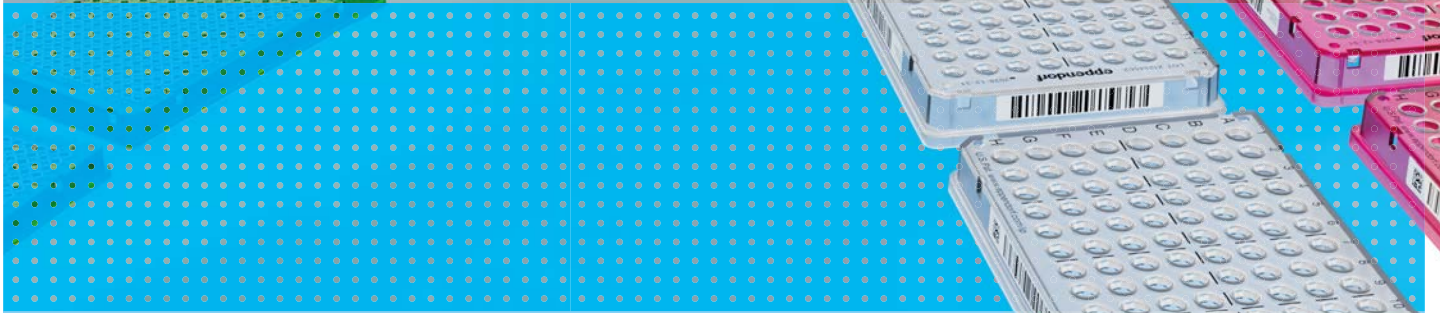
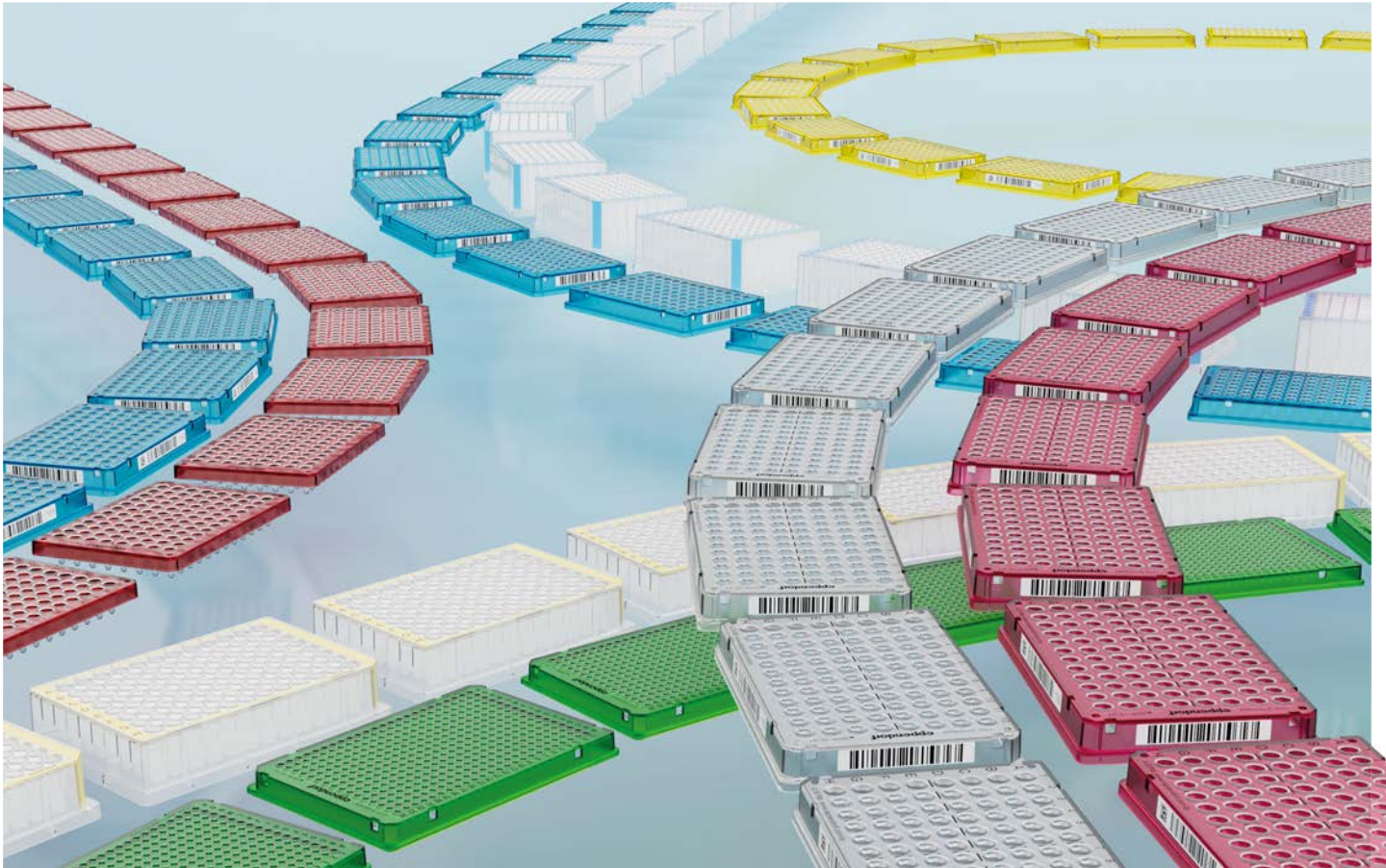
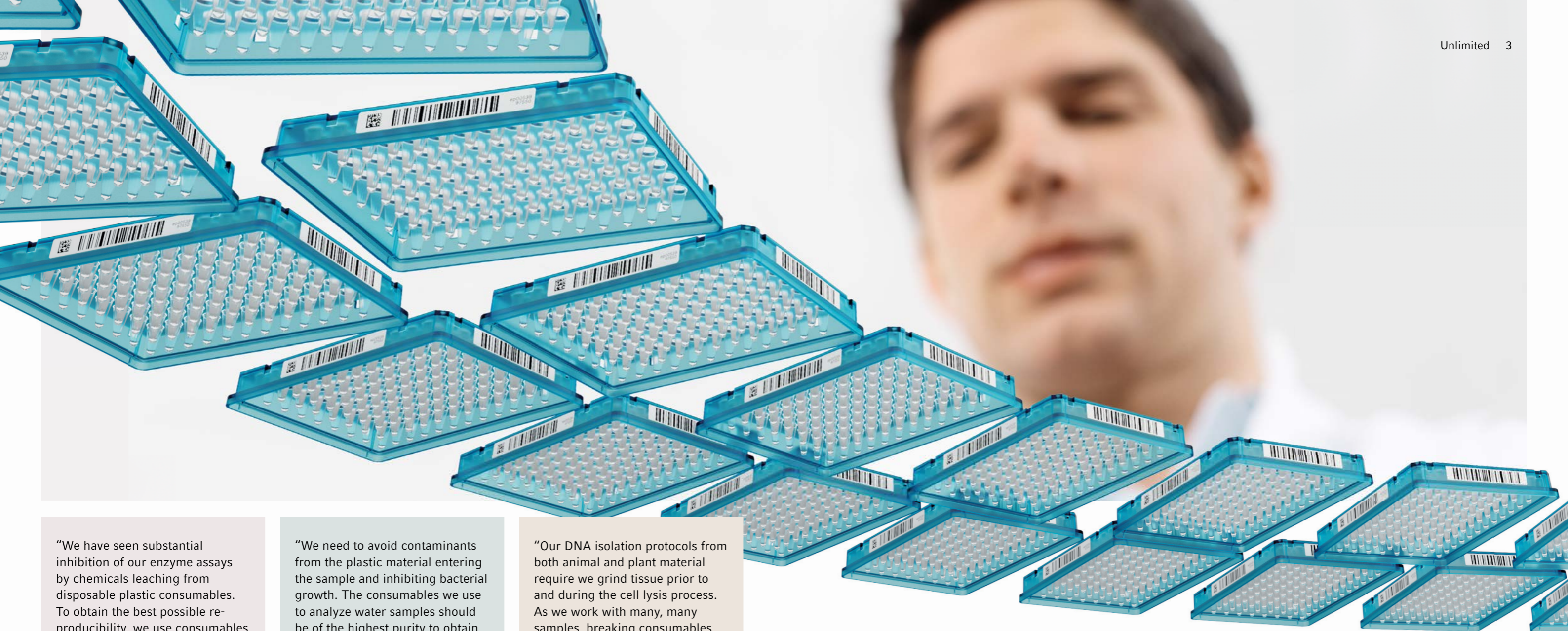


eppendorf



# Unlimited

Quality – Stability – Purity: Eppendorf Plates®



"We have seen substantial inhibition of our enzyme assays by chemicals leaching from disposable plastic consumables. To obtain the best possible reproducibility, we use consumables from manufacturers that can confirm the absence of critical manufacturing additives."

**Dr. Andrew Holt**  
 Department of Pharmacology  
 University of Alberta, Canada



"We need to avoid contaminants from the plastic material entering the sample and inhibiting bacterial growth. The consumables we use to analyze water samples should be of the highest purity to obtain reliable results."

**Karen Thomsen**  
 Microbiology Central Laboratory  
 Hamburg Water GmbH, Germany



"Our DNA isolation protocols from both animal and plant material require we grind tissue prior to and during the cell lysis process. As we work with many, many samples, breaking consumables and experiencing the subsequent sample loss can be critical. The excellent quality and stability of the 1 mL Eppendorf Deepwell Plates® convinced us as it improved the reliability of our process significantly."

**Dr. Paul Gooding**  
 Plant Genomics Centre  
 Australian Genome Research  
 Facility, Australia



# The Best for Your Workflow

Our consumables are made to ensure your workflows are highly reproducible and convenient. Our plates are not simply plastic, they are high-performance components designed to help you to excel in your work. This is why our expertise and dedication underlie all our plate designs and production quality. Our expert team brings decades of experience to ensuring robust production processes for our consumables with the sole aim of providing you simply the best possible plates.



## Made for Robotics

### Reliability for your robotics

By using our plates, you are investing in the future viability of your workflows. Our plates ensure high reliability, lower error rates and less downtime as well as reduce the need for post-analytical corrections. This results in faster turn-around times, particularly in high-throughput settings. For you, this translates in to greater analytical quality, reduced financial and opportunity costs, and decreased business risks in terms of applications.

### Design and precision

We live functional design, and our plates are made for robotics:

- > Following ANSI/SLAS microplate format
- > Feature excellent robustness and rigidity with no warping, no bending, no shrinking to ensure an exact fit into adapters, precise stacking and optimal control by robots
- > Have exceptional geometrical precision to ensure highly accurate liquid handling
- > Deliver high geometrical consistency for easy teaching – fire and forget

### Traceability

Near unlimited traceability and customization options ensure you can tailor our product to your meet systems' needs.

## Made for Consistent Lab Results

### Reliability in your assays

Thoughtful design and development form the basis for safe, user-friendly handling as well as exceptional application performance. This also includes sample integrity: A plate should not affect application results, even if the workflow has demanding conditions.

### Smart performance

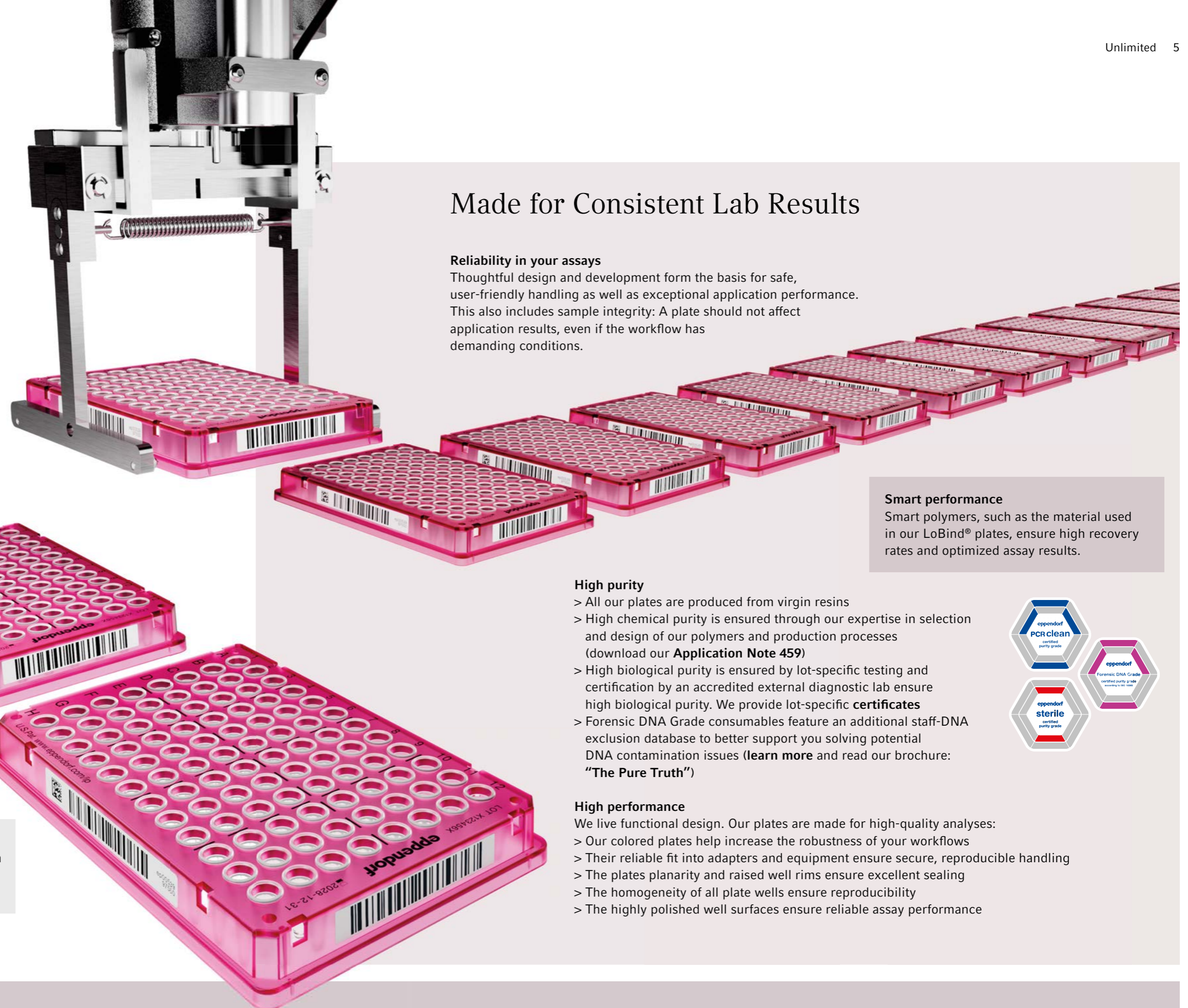
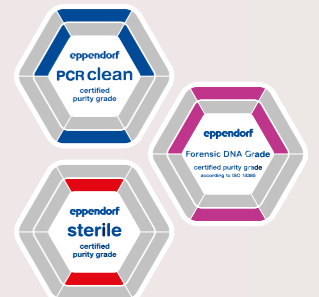
Smart polymers, such as the material used in our LoBind® plates, ensure high recovery rates and optimized assay results.

### High purity

- > All our plates are produced from virgin resins
- > High chemical purity is ensured through our expertise in selection and design of our polymers and production processes (download our **Application Note 459**)
- > High biological purity is ensured by lot-specific testing and certification by an accredited external diagnostic lab ensure high biological purity. We provide lot-specific **certificates**
- > Forensic DNA Grade consumables feature an additional staff-DNA exclusion database to better support you solving potential DNA contamination issues (**learn more** and read our brochure: **"The Pure Truth"**)

### High performance

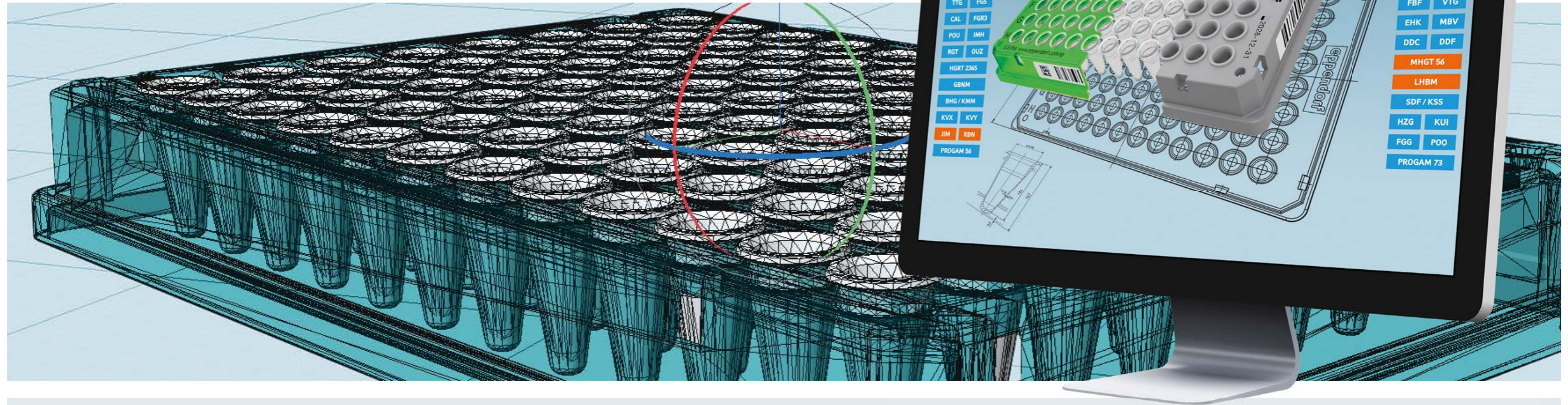
- We live functional design. Our plates are made for high-quality analyses:
- > Our colored plates help increase the robustness of your workflows
  - > Their reliable fit into adapters and equipment ensure secure, reproducible handling
  - > The plates planarity and raised well rims ensure excellent sealing
  - > The homogeneity of all plate wells ensure reproducibility
  - > The highly polished well surfaces ensure reliable assay performance



# Made by Eppendorf

Our products maintain their high quality throughout their entire life cycle. Our developers, application specialists, mold constructors and builders, production staff and quality management staff demonstrate their dedication each and every day to ensure our vision of product quality translates into the high performance you expect.

Our logistics and sales professionals work hard each day to show how our products are more than mere plastic pieces; they are high-performance components that enhance your workflow. Building relationships, reliability, dependability and ultimately, trust lie at the core of our values.



### Design, construct, tune

We run our own tool shop, which we use to design and build some of our most valuable tools self-made. We know our machines inside and out and should a production interruption occur, we can quickly identify and rectify any deviations in-house.

### Reproducible and reliable

You won't feel the difference. But then again, you really will: Meticulous design, construction and maintenance of our molds ensure each replication delivers an identical Eppendorf product and outstanding Eppendorf performance. Our performance today will be the same in five years, and it will be the same in your next lab. We offer consistent performance plate after plate, lot after lot, year after year.

For you, this results in more robust validation, better scalability, easier protocol transfer and more "peace of mind".

### We love service

Our products are not just consumables they are your experience. We see ourselves not just as a supplier, but as your partner in the lab. Should you have any requests or should issues arise, we are there to support you and your business.



See our Application Note No. 466 on reproducibility: »Through Space and time«





## Eppendorf LoBind® Plates

### Protein LoBind plates

During the storage or incubation of biological samples in standard reaction vessels, more than 90% of the sample material can be lost within 24 hours due to the biomolecules binding to the plastic surface. Eppendorf LoBind plates maximize sample recovery by significantly reducing sample binding to the surface.

### Applications

- > Preparation and storage of protein, peptide, and antibody samples
- > Enzymatic assays
- > Storage of virus stock solutions
- > Storage of cell suspensions
- > Sample processing in toxicology

### DNA LoBind plates

DNA LoBind plates are optimized to effectively recover nucleic acids. Special manufacturing technologies along with a targeted polypropylene design ensure nearly 100% recovery of DNA/RNA molecules – and all this without surface coating to avoid contamination hazards to the sample.

### Applications

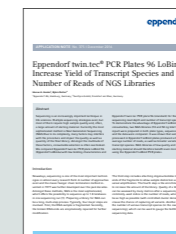
- > Preparation and storage of DNA and RNA samples
- > Forensic trace analyses
- > Preparation of dilution series for quantitative PCR
- > Sample preparation for next-generation sequencing (NGS)
- > Preparation of genome or oligonucleotide libraries

### Eppendorf twin.tec® PCR plates LoBind

Get the most out of your PCR. Polypropylene wells with LoBind properties are designed to maximize the yield of your target molecules. This means more molecules are available for the reaction, e.g., PCR.

### Applications

- > PCR low DNA template concentrations, e.g., forensic trace analysis
- > Low-volume PCR
- > DNA library construction in NGS workflows



# Traceability

Our traceability begins in our factory and extends into your lab to make your processes more robust. Discover our twin.tec® Trace PCR Plates, our SafeCode plates, and our customized barcoded plates for improved ergonomics and traceability. These plates are the perfect choice for high-throughput applications and automated workflows as well as standardized and regulated processes. In addition, they support traceability and your documentation for audits.

Eppendorf Plates can be adapted to your specific processes and needs and are produced especially for you according to your specifications. Design your own barcoded plates using our easy-to-use Barcode Wizard.

**Free choice**

- > Choose the plate you need from our overall portfolio
- > Choose the position (1-4 edges), content (both the prefix and starting serial number) and the type of barcode
- > Sit back and relax knowing that we seamlessly follow up with you about using the serial numbers in your next order

**Optimized colors**

- Brighter colors offer 3 in 1:
- > Support for your workflow through easy plate identification
  - > High-contrast labeling via laser marking
  - > Improved visibility of samples and pipette tips in the wells



## twin.tec® Trace Plates

**Laser-engraved lot numbers and expiration dates**

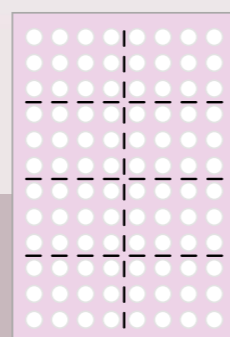
On each individual plate for better traceability in your laboratory processes, your kits, or with your own customers.

Trace the data even after the plates are removed from the packaging.



**New innovative guiding grid**

- > For lightning-fast well identification



## SafeCode Plates

Standardized, barcoded Eppendorf Plates with a precoded, robust printed 2D and 1D barcode are your off-the-shelf barcoded consumables: Easy to order, quickly delivered and requiring no minimum order quantity.

**Your unique ID**

- > Serial numbers are unique across all Eppendorf SafeCode consumables and lots (all plates, tubes and vials)

**SafeCode Feature: Full traceability**

- > Easy, fast access to product- and lot-specific documentation\* by entering the serial number on our homepage (<https://www.eppendorf.com/safecode-data>)

**High performance**

- > Combines robustness and readability even on colored plate frames
- > Excellent contrast due to black-on-white printing
- > Exceptional mechanical, chemical and thermal robustness
- > Future-proof 2D DataMatrix code on the front

\* Including: IFU-, lot-specific certificates, general certificates, technical drawing

For more information go to:  
[www.eppendorf.com/safecode-data](https://www.eppendorf.com/safecode-data)



# 2<sup>nd</sup> Generation Feedstock – 1<sup>st</sup> Class Consumables

Sustainability meets precision. Our new bio-based plates offer a pathway to significantly more sustainable laboratory work without the need to revalidate existing procedures when transitioning from other Eppendorf twin.tec® PCR plates.

Our manufacturing sites and processes are ISCC PLUS certified by the International Sustainability & Carbon Certification organization (ISCC).

## Eppendorf twin.tec® Trace PCR Plates BioBased

Laser-engraved lot number on every plate

LOT X123456X

### Product features

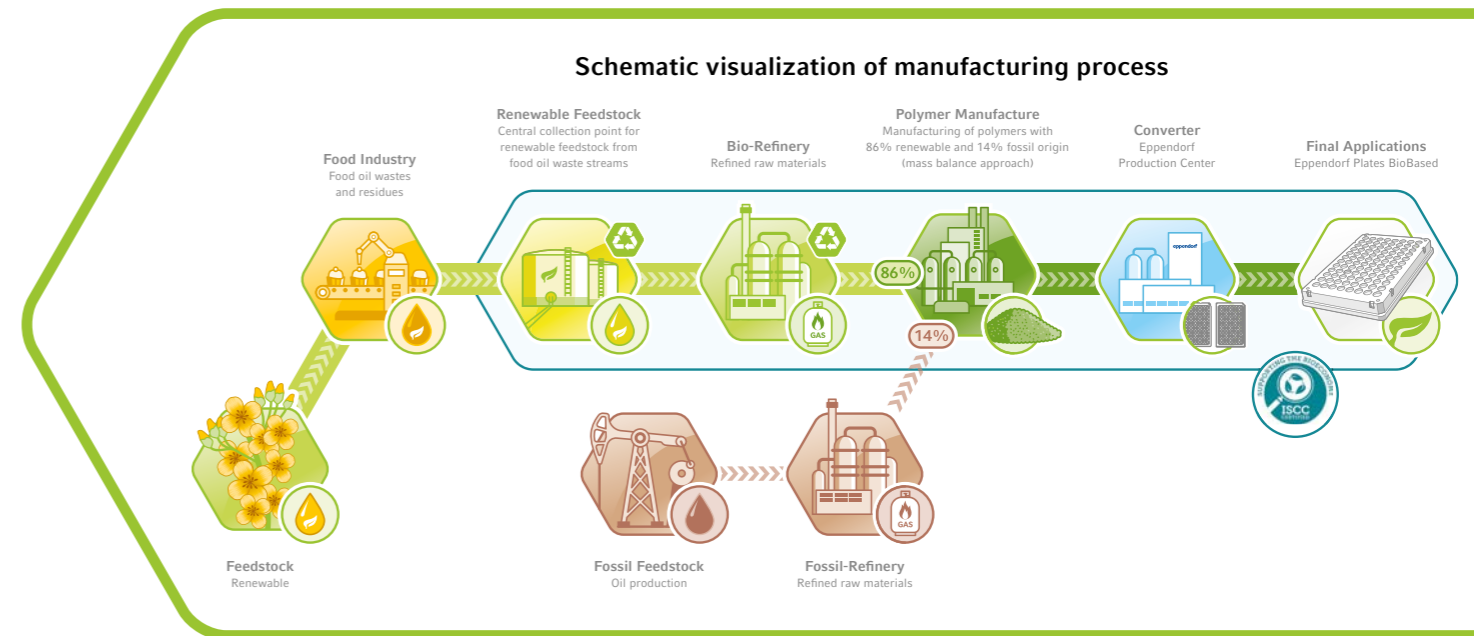
- > Reduction of consumable-related carbon footprint in the lab
- > Identical performance to existing reference twin.tec PCR Plates
- > Proven one-piece design: Combining a polycarbonate frame for consistent performance in robotics and polypropylene wells for optimized assay performance
- > Laser-engraved lot number and expiration date on each single plate
- > Unique laser-engraved optical guiding grid and OptiTrack® matrix for quick orientation when pipetting manually
- > Batch-tested and independently certified free of DNA, DNAase, RNase and PCR inhibitors (PCR clean)



Laser-engraved expiration date on every plate

2028-07-28

### The Production Process – From Renewable Material to Eppendorf Plates® BioBased



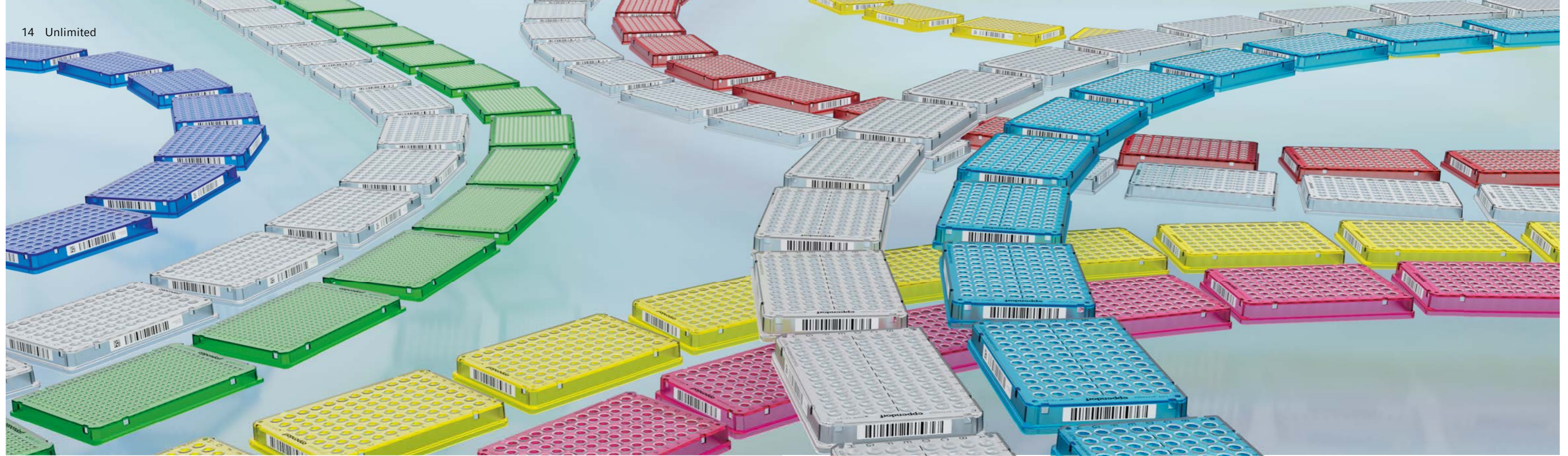
\* Renewable material content is 100% for polypropylene wells and 77% for the polycarbonate frame. When weighted by the material's respective mass, this results in an average renewable material content of 86%.

Our biobased plates are manufactured using polymer resins derived from bio-circular renewable resources. The production process follows the mass balance approach, where fossil oils are replaced by second-generation renewable resources (e.g., waste and residues from forestry, vegetable oil refining, or used cooking oil).

- > The resulting biobased polymers are chemically identical to fossil oil-based polymers. This enables us to contribute to your sustainability goals while delivering the same superior technical performance as our non-BioBased consumables
- > Our manufacturing sites and processes are ISCC PLUS certified by the International Sustainability & Carbon Certification organization (ISCC)
- > ACT labeled – Environmental Impact Factor certification initiated by My Green Lab®



Discover more about BioBased consumables:  
[www.eppendorf.com/biobased](http://www.eppendorf.com/biobased)



## Eppendorf twin.tec® PCR Plates

The best fit for your Genomics applications: Scientists continuously ask themselves about the best instrument, reagent mix, enzyme and the like for their experiments. The same careful approach should be taken when selecting plastic consumables for your valuable samples.

Variability-prone consumables can lead to enormous differences in the quality and reproducibility of your results. Wall thickness, material chemical purity, mechanical stability and many other properties can have a direct effect on your experiments.

## Made for Robotics and Robust Processes

### Exceptionally robust polycarbonate frame

- > Reliable grabbing and precise stacking
- > Maximum geometrical consistency and stability throughout the workflow
- > Perfect adaptor fit – no shrinking or warping during incubation at temperature
- > Smart traceability options such as lot-marking and off-the-shelf barcoding (see also pages 10-11)
- > Colored frames for process control and transparent frames to more easily teach automation devices
- > High-contrast laser engraving for manual and semi-automated work

### Applications

- > Automated, standardized and/or validated processes
- > High-throughput Genomics applications
- > NGS library generation
- > Standard and real-time PCR
- > Sample handling of small volumes
- > Normalization and cherry-picking



For more information go to  
[www.eppendorf.com/plates](http://www.eppendorf.com/plates)



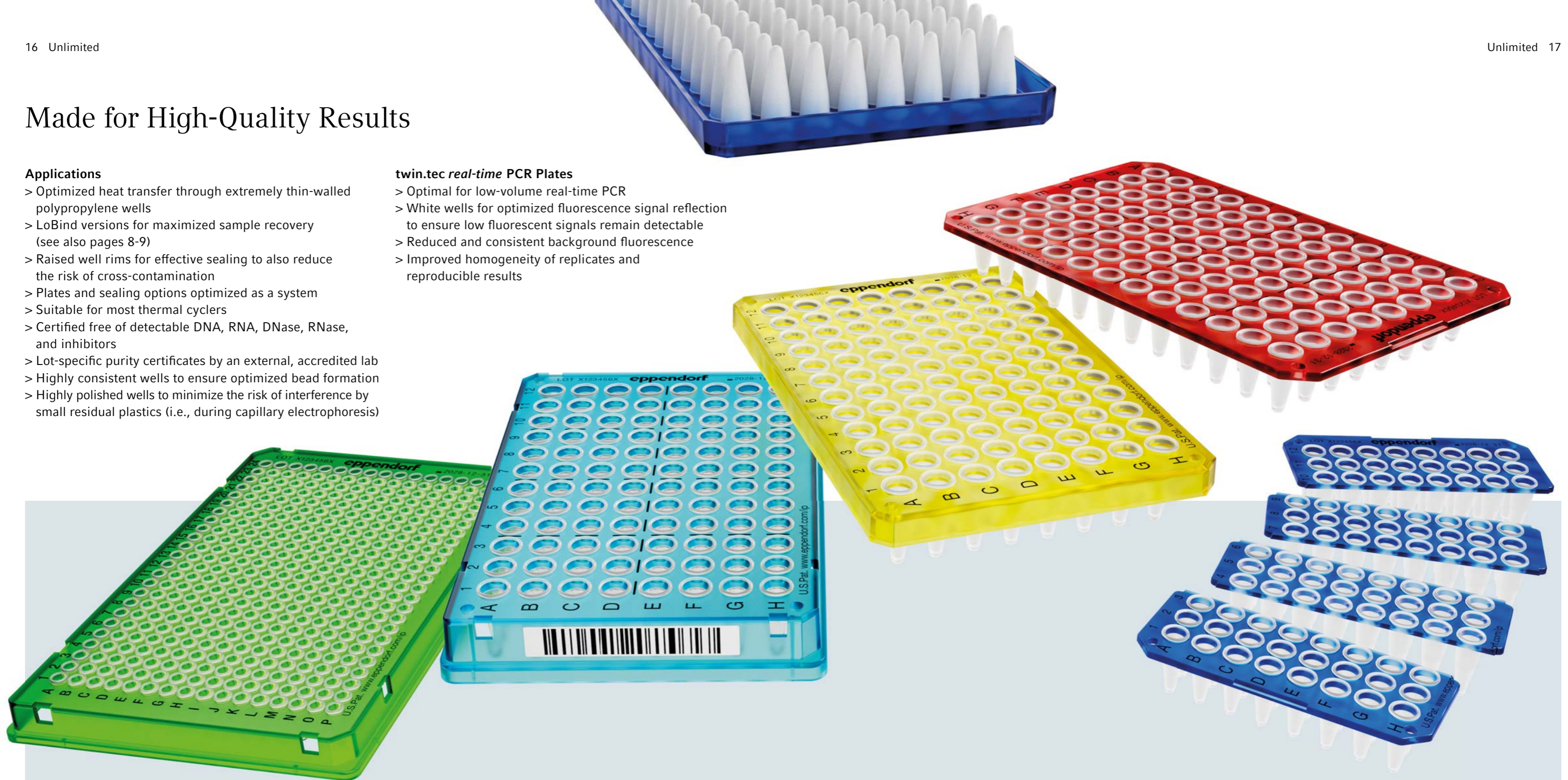
## Made for High-Quality Results

### Applications

- > Optimized heat transfer through extremely thin-walled polypropylene wells
- > LoBind versions for maximized sample recovery (see also pages 8-9)
- > Raised well rims for effective sealing to also reduce the risk of cross-contamination
- > Plates and sealing options optimized as a system
- > Suitable for most thermal cyclers
- > Certified free of detectable DNA, RNA, DNase, RNase, and inhibitors
- > Lot-specific purity certificates by an external, accredited lab
- > Highly consistent wells to ensure optimized bead formation
- > Highly polished wells to minimize the risk of interference by small residual plastics (i.e., during capillary electrophoresis)

### twi.n.te.c *real-time* PCR Plates

- > Optimal for low-volume real-time PCR
- > White wells for optimized fluorescence signal reflection to ensure low fluorescent signals remain detectable
- > Reduced and consistent background fluorescence
- > Improved homogeneity of replicates and reproducible results



### twi.n.te.c PCR Plate 384, skirted

- > For higher throughput and smaller sample volumes
- > Excellent compatibility with automated systems
- > Skirted for labeling or barcoding
- > 45  $\mu$ L max. well volume

### twi.n.te.c PCR Plate 96, skirted

- > Excellent compatibility with automated systems
- > Skirted for labeling or barcoding
- > Low-profile design to enable low-volume PCR
- > 150  $\mu$ L max. well volume

### twi.n.te.c PCR Plate 96, semi-skirted

- > Offers a higher well volume up to 250  $\mu$ L max.
- > Excellent compatibility with automated systems (depending on system)
- > Semi-skirted for labeling or barcoding

### twi.n.te.c PCR Plate 96, unskirted

- > Available with regular profile (250  $\mu$ L) and low-profile (150  $\mu$ L)
- > Available in a divisible format (4 x 24 wells)

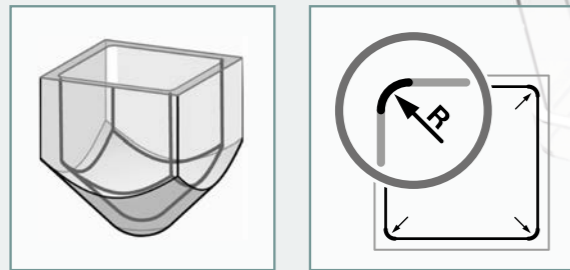


For more information go to  
[www.eppendorf.com/plates](http://www.eppendorf.com/plates)



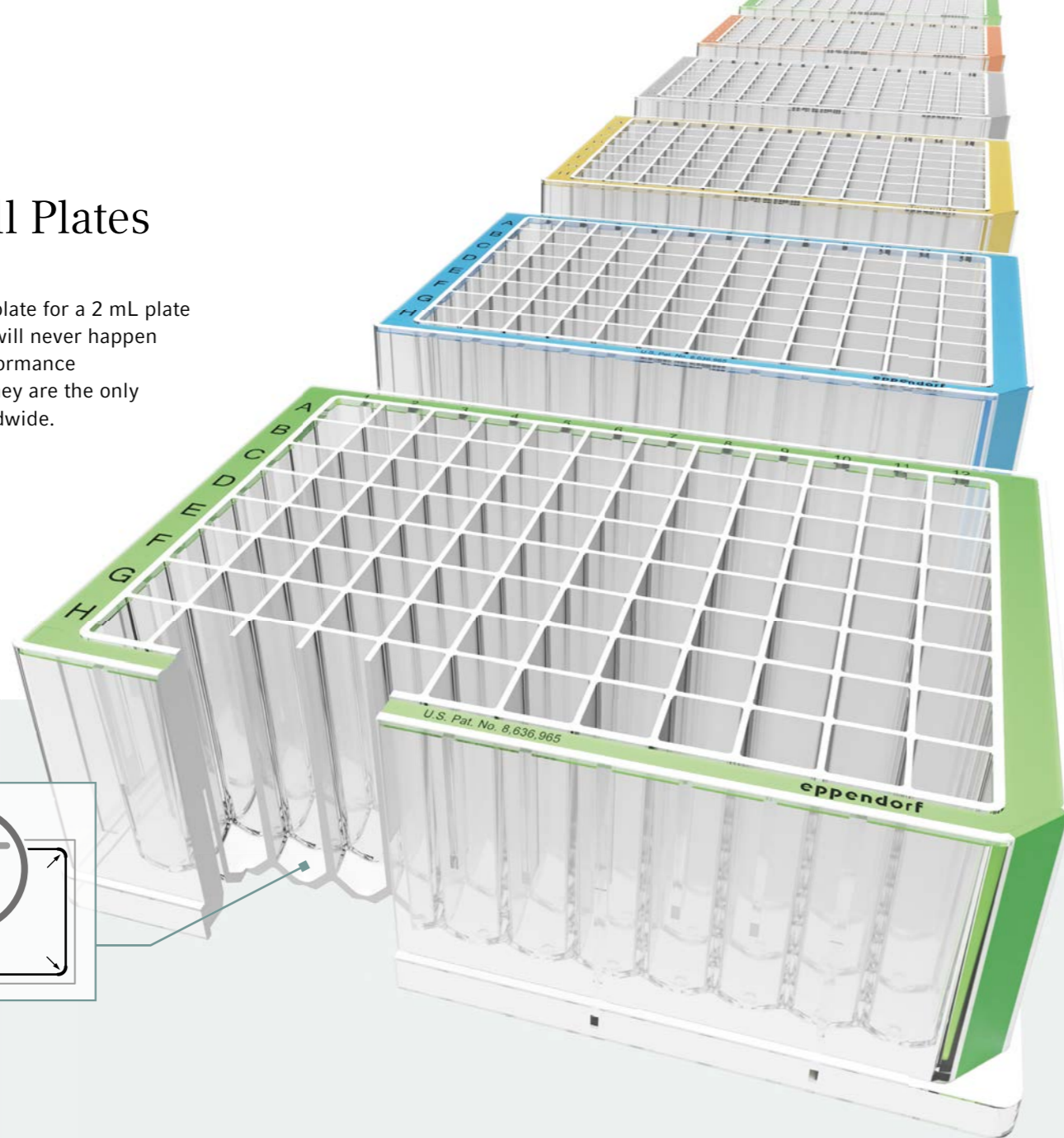
## Eppendorf Deepwell Plates

Have you ever confused a 1 mL deepwell plate for a 2 mL plate in your robotic sample preparation? That will never happen again when you use our colored high-performance Eppendorf Deepwell Plates 96 and 384. They are the only deepwell plates with a colored frame worldwide.



## Made for Robotics

- > RecoverMax® well design: Bottom and corner geometry of the wells are designed for maximum sample recovery, excellent mixing properties and minimized risk of cross-contamination
- > Outstanding consistency and uniformity from well to well and from plate to plate for optimized automation workflows as well as consistent, reproducible results
- > High transparency for better visibility of the sample and pipettes tips in the wells, especially when the teaching automation devices
- > Robust design: No geometric deformation during storage at -86 °C and incubation at 100 °C
- > Traceability: Available in SafeCode and customized barcode versions



## Made for High-Quality Lab Results

- > OptiTrack® matrix: Up to 30% faster sample identification and fewer pipetting errors thanks to lasered high-contrast alphanumeric labeling
- > Robust wells for working with glass or steel beads
- > Optimized material: High-quality polypropylene for strong resistance to chemicals, mechanical stress and temperature extremes from -86 °C to 100 °C
- > Smart performance: Available in DNA and protein LoBind versions for maximized sample yield and sensitive assays
- > Raised well edges and smooth surface for reliable sealing, even with heat sealing
- > g-Safe®: Exceptional centrifugation stability up to 6,000 × g for faster precipitation and improved sample quality

### Color

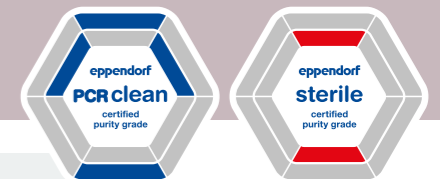
- > Yellow, blue, green and white plate borders
- > Your Workflows supported through easy plate identification
- > Side-by-side color recognition even when stacked

### Applications

- > Sample collection
- > Genomics, proteomics, metabolomics, cellomics, compound analyses
- > Sample purification and material isolation with high throughput and high sensitivity (e.g., DNA, RNA, plasmids, protein, cells)
- > Preparation and storage of valuable samples (e.g., oligonucleotide libraries, proteins, cells, compounds)
- > Bacteria and yeast cultivation
- > Preparation of dilution series

### Formats and purity grades

- > 96/2000 µL, 96/1000 µL, 96/500 µL, 384/200 µL
- > High biological purity in PCR clean, sterile
- > Available in bulk packaging



## Eppendorf Microplates

Eppendorf Microplates bring unique clarity to your laboratory! Never before has it been so easy to pipette, process and recover samples in a polypropylene microplate. The exceptionally high transparency ensures you can always find your samples at a glance. For maximized sample recovery, the microplates are also available made with Eppendorf LoBind material.

### Applications

- > Sample preparation and storage
- > Assays requiring high resistance to heat or solvents
- > Compound screening
- > Combinatorial chemistry
- > Protein or nucleic acid analyses

### Product features

- > Unsurpassed transparent polypropylene for better sample visibility
- > OptiTrack matrix: 30% faster well identification and fewer pipetting errors thanks to high-contrast alphanumeric labeling
- > RecoverMax well design: Optimized well geometry for minimized residual volume and excellent mixing properties
- > *g*-safe: Exceptional centrifugation stability up to 6,000 × *g*
- > High resistance to chemicals, mechanical stress and temperature extremes
- > Available with barcode (see page 11)



## Eppendorf Assay and Reader Microplates

Eppendorf assay microplates are designed for fluorescence and luminescence detection. The plates feature completely black or white wells and are suitable for use in plate measuring instruments that detect signals from the top.

### Applications

- > Fluorescence and luminescence detection
- > Nucleic-acid and protein measurement
- > Cell-based assays
- > Cell-viability and apoptosis assays
- > Cell imaging

### Product features

- > Black Eppendorf Microplates offer an excellent signal-to-noise ratio, even with low-concentration samples.
- > White Eppendorf Microplates maximize reflection for exceptionally sensitive detection of luminescence.
- > The black-and-white assay plates are made of polypropylene and therefore highly resistant to chemicals, mechanical stress and temperature extremes
- > All plates are optimized for minimal auto-fluorescence and auto-luminescence.



For more information go to  
[www.eppendorf.com/microplates](http://www.eppendorf.com/microplates)



For more information go to  
[www.eppendorf.com/plates](http://www.eppendorf.com/plates)

## Smart Seal

Your assays deserve not only outstanding plates but also outstanding sealing options. Our plate, film and foil material as well as adhesives have been designed to work together as a system and are optimized for a variety of assays. This results in a tight seal as well as strong protection against evaporation and contamination and strong protection of

### High performance in assay and automation

Sensitive assays and automation require exceptional precision. Our films and foils offer:

- > Very low evaporation rates
- > Consistent optical measurements – our films offer high transparency and ensure no shrinkage or curling during heating
- > Good marking properties
- > Easy piercing of foils, even with multichannel pipettes, without pipette tips adhering to the foil
- > No excessive protrusion of foil edges that impede secure gripping or stacking of the plates

sample integrity. You also benefit from excellent assay efficiency (e.g., no PCR inhibition), high transparency and the outstanding handling ergonomics – all what you have come to expect from Eppendorf.

### High purity

Certified PCR clean purity also ensures the films and foils have no inhibitory effect on your PCR.

### Ergonomic

Our film and foils have two end tabs that help you to handle the product more easily and to position it more precisely without touching the sealing area.



### Pick your match

- > Masterclear® *real-time* PCR Film (optical film)
- > Heat Sealing Foil and Film
- > Self-adhesive PCR Foil and Film
- > Self-adhesive Storage Foil and Film
- > Eppendorf Sealing Mat
- > Eppendorf Plate Lid

Our sealing options are available for a variety of applications that demand different requirements. Depending on the product, these options offer permanent sealing or residue-free removal, high transparency or strong light protection, good piercing properties or protection against unintentional piercing, and single use or multiple use.

Our selection guide on page 22 will help you identify the most suitable product.

### *real-time* PCR

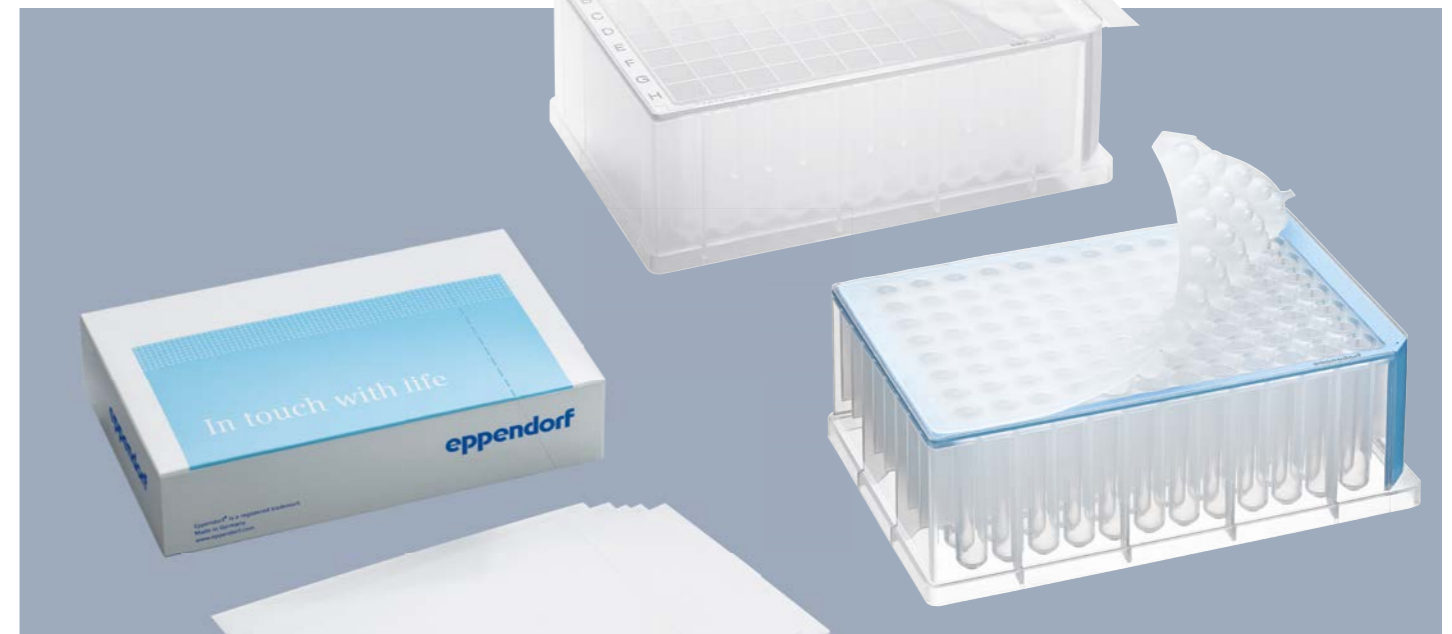
Masterclear *real-time* PCR film is optimized for maximum light transmission. Transmission values of > 90% between 350 nm and 750 nm guarantee optimal excitation of your fluorescent dyes and optimal readout of the emitted fluorescence.

### Automation

Our Heat Sealing Foils are made of aluminum, are easy to pierce – even with multichannel pipettes – while not sticking to the pipette tips, and protect light-sensitive samples. We recommend these foils for use in automated systems.



For more information



For more information go to:  
[www.eppendorf.com/sealing](http://www.eppendorf.com/sealing)



## Selection Guide: Sealing Options

	Permanent sealing	Temporary sealing; easy, residue-free removal	Transparency	Protection for light sensitive samples	Can be easily pierced	Protection from unintended piercing	Recommended uses
<b>PCR Film, self-adhesive</b>		■	■			■	PCR, colorimetric applications, sample monitoring
<b>PCR Foil, self-adhesive</b>		■		■	■		<b>PCR, high-throughput screening, use in automated systems</b>
<b>Heat Sealing Film</b>	■		■			■	PCR, colorimetric applications, secure long-term storage of samples Especially strong protection against evaporation
<b>Heat Sealing Foil</b>	■			■	■		<b>PCR, compound management, high-throughput screening, use in automated systems</b> Especially strong protection against evaporation
<b>Storage Film, self-adhesive</b>		■	■			■	Secure short-term storage of samples
<b>Storage Foil, self-adhesive</b>		■		■	■		Short-term storage of light sensitive samples
<b>Masterclear real-time PCR Film, self-adhesive</b>		■	Transmission > 90% between 350 nm and 750 nm			■	real-time PCR, fluorescence based applications, optical measurements
<b>Sealing Mat</b>		■			■		Sterile assays, incubation in the heating block or water bath, autoclavable and reusable (if not pierced)
<b>Plate lid</b>	Sturdy and flexible protection from external contamination of the samples during short-term storage						

For more information please visit: <https://www.eppendorf.com/de-de/lab-academy/life-science/microbiology/sealing-options-for-pcr-plates/qpcr-plates-how-to-find-the-right-one/>

## Selection Guide: SafeCode vs. Customized Barcoding

	SafeCode Plates	Customized barcoding					
<b>Short profile</b>	Faster ordering, smaller minimum order quantity, serial ID uniqueness across all Eppendorf SafeCode Consumables (all plates, tubes and vials), SafeCode feature for improved document traceability	Greater flexibility in selecting barcode symbology, code content and label location					
<b>Reliability and quality</b>	Familiar high Eppendorf quality	Familiar high Eppendorf quality					
<b>Ease of ordering</b>	Off-the-shelf ordering	Customization via Barcode Wizard (eShop) and custom built to order production					
<b>Immediate availability</b>	Immediate						
<b>Minimum order quantity</b>	Single case	<table border="1"> <tr> <td>Built to stock</td> <td>Within a few weeks</td> <td rowspan="2">Built to order</td> </tr> <tr> <td></td> <td>Larger minimum quantity depending on product number. Minimum order quantity is provided during customization process</td> </tr> </table>	Built to stock	Within a few weeks	Built to order		Larger minimum quantity depending on product number. Minimum order quantity is provided during customization process
Built to stock	Within a few weeks	Built to order					
	Larger minimum quantity depending on product number. Minimum order quantity is provided during customization process						
<b>Available barcode symbology</b>	Fixed. Code 128 (1D) + Code 128 DataMatrix	Can be freely selected from: Code 128 (8 digits), code 128 (10 digits), code 39, Interleaved					
<b>Barcode content</b>	Predefined content that can't be customized ID / serial number consisting of two letters + 10 digits (i.e., ep1234567890)	Customizable content. prefix + 8-10 digits depending on code type. Free selection of start number. Eppendorf assists customer to manage continues sequence of barcodes for follow-up orders					
<b>Uniqueness of ID, serial number</b>	Unique ID guaranteed across all Eppendorf SafeCode Consumables (all plates, tubes and vials)	Unique within every production batch and across follow-up orders of the same project					
<b>Label location</b>	Left: 1D barcode, right: 1D barcode, front: 1D barcode + 2D DataMatrix (identical content) + human readable interpretation (HRI)	Free selection of label content (No. label, 1D barcode and/or HRI) on all four sides					
<b>High contrast for safe reading even on colored plates</b>	Yes (2-color print, black on white)	Yes (black color print on white label)					
<b>Label and code durability</b>	Exceptionally high: > Printed. scratch resistant, temperature resistant and chemically resistant printing > 2D DataMatrix on front side supports ECC200 error correction	High: > High-quality stickers with special adhesive					
<b>Documentation availability</b>	<p>Instructions for use, product number information, all required certificates, technical drawings and lot-specific certificates available on homepage and upon request</p> <p>SafeCode features: Lot-specific information and all documents are available at your fingertips via central dataport by querying the consumable's ID/serial number. The dataport always provides the document version valid at the time of lot production.</p>	Instructions for use, product number information, all required certificates, technical drawings and lot-specific certificates available on homepage and upon request					

For more information please visit: <https://www.eppendorf.com/safecode-data>

# Technical Information

## twin.tec® PCR Plates

<b>Material</b>	Polycarbonate (frame), polypropylene (wells)						
<b>Resistance to chemicals</b>	The plates including border show a high resistance to UV light and chemicals. Refer to Application Note No. 56: "The best material for original Eppendorf Tubes® and Plates" at <a href="http://www.eppendorf.com">www.eppendorf.com</a> . In case of doubt, contact Eppendorf Application Support.						
<b>Dimensions</b>	Acc. to ANSI/SLAS 1-2004, ANSI/SLAS 3-2004 and ANSI/SLAS 4-20041.						
<b>Operational temperature</b>	-80 °C to +120 °C						
<b>Autoclavability</b>	Autoclavable (121 °C, 20 min), not closed. The stability of the single-use items can be compromised.						
<b>Format</b>	96 wells			96 wells low profile		384 wells	
	Skirted	Semi-skirted	Unskirted	Divisible	Unskirted	Divisible	Skirted
<b>Max. filling volume</b>	150 µL	250 µL	250 µL	250 µL	150 µL	150 µL	45 µL
<b>Max. centrifugation stability</b>	2,250 × g						

For specific and detailed operating conditions please refer to the instructions for use.

## Deepwell Plates

<b>Material</b>	Polypropylene, colored, colorless			
<b>Resistance to chemicals</b>	The plates including border show a high resistance to UV light and chemicals. Refer to Application Note No. 56: "The best material for original Eppendorf Tubes® and Plates" at <a href="http://www.eppendorf.com">www.eppendorf.com</a> . In case of doubt, contact Eppendorf Application Support.			
<b>Dimensions</b>	Acc. to ANSI/SLAS 1-2004, ANSI/SLAS 3-2004 and ANSI/SLAS 4-20041.			
<b>Operational temperature</b>	-86 °C to +100 °C			
<b>Autoclavability</b>	Autoclavable (121 °C, 20 min). The stability of the single-use items can be compromised.			
<b>Format</b>	96/2,000 µL	96/1,000 µL	96/500 µL	384/200 µL
<b>Bottom shape of the wells</b>	<b>Conical</b>	<b>Round</b>	<b>Round</b>	<b>Conical</b>
<b>Well shape</b>	Square	Round	Round	Square
<b>Theoretical volume per well</b>	2,400 µL	1,200 µL	700 µL	240 µL
<b>Working volume per well</b>	50-2,000 µL	30-1,000 µL	30-550 µL	20-225 µL
<b>Max. centrifugation stability</b>	PCR clean, Protein LoBind, DNA LoBind		Sterile	
	6,000 × g		5,000 × g	

For specific and detailed operating conditions please refer to the instructions for use.

## Microplates

<b>Material</b>	Polypropylene, colored, colorless				
<b>Resistance to chemicals</b>	The plates including border show a high resistance to UV light and chemicals. Refer to Application Note No. 56: "The best material for original Eppendorf Tubes® and Plates" at <a href="http://www.eppendorf.com">www.eppendorf.com</a> . In case of doubt, contact Eppendorf Application Support.				
<b>Dimensions</b>	Acc. to ANSI/SLAS 1-2004, ANSI/SLAS 3-2004 and ANSI/SLAS 4-20041.				
<b>Operational temperature</b>	-86 °C to +100 °C				
<b>Autoclavability</b>	Autoclavable (121 °C, 20 min). The stability of the single-use items can be compromised.				
<b>Format</b>	96/F-PP	96/U-PP	96/V-PP	384/F-PP	384/V-PP
<b>Bottom shape of the wells</b>	<b>Flat</b>	<b>Round</b>	<b>Conical</b>	<b>Flat</b>	<b>Conical</b>
<b>Theoretical volume per well</b>	400 µL	360 µL	350 µL	150 µL	140 µL
<b>Working volume per well</b>	50-350 µL	20-320 µL	20-300 µL	10-120 µL	5-120 µL
<b>Max. centrifugation stability</b>	PCR clean, Protein LoBind, DNA LoBind			Sterile	
	6,000 × g			6,000 × g	

For specific and detailed operating conditions please refer to the instructions for use.

## Sealing options

	Heat Sealing Film	Heat Sealing Foil	Masterclear real-time PCR Film	PCR Film	PCR Foil	Storage Film	Storage Foil	Sealing Mat	Plate Lid
<b>Material</b>	Polyester	Aluminum	Polyester	Polyester	Aluminium	Polyester	Aluminum	TPE	Polystyrene
<b>Resistance to chemicals</b>	Compare with Application Note No. 56: "The best material for original Eppendorf Tubes® and Plates" at <a href="http://www.eppendorf.com/manuals">www.eppendorf.com/manuals</a>								
<b>Autoclavability</b>	Not autoclavable							Autoclavable 121 °C, 20 min	Not autoclavable
<b>Operational temperature</b>	-86 °C to +110 °C			-20 °C to +120 °C				-86 °C to +120 °C	-86 °C to +60 °C
<b>Pierceable/not pierceable</b>	Not pierceable	Pierceable	Not pierceable	Not pierceable	Pierceable	Not pierceable	Pierceable	Pierceable	Not pierceable
<b>Transparency</b>	Transparent	Nontransparent	Transparent	Transparent	Nontransparent	Transparent	Nontransparent	Nontransparent	Transparent
<b>Peelability</b>	Not peelable post-application	Peelable or removable post application							

For specific and detailed operating conditions please refer to the instructions for use.

# Eppendorf twin.tec® PCR Plates

## Ordering information\*1

Description	OptiTrack® frame color	International order no.	North America order no.
<b>twin.tec® PCR Plate 96, skirted, PCR clean</b>			
colorless, 25 pcs.	<input type="checkbox"/> colorless	0030 128.648	951020401
yellow, 25 pcs.	<input checked="" type="checkbox"/> yellow	0030 128.656	951020427
green, 25 pcs.	<input checked="" type="checkbox"/> green	0030 128.664	951020443
blue, 25 pcs.	<input checked="" type="checkbox"/> blue	0030 128.672	951020460
red, 25 pcs.	<input checked="" type="checkbox"/> red	0030 128.680	951020486
colorless, 300 plates (12 bags × 25 plates)	<input type="checkbox"/> colorless	0030 128.770*2	951020619*2
yellow, 300 plates (12 bags × 25 plates)	<input checked="" type="checkbox"/> yellow	0030 128.788*2	951020624*2
green, 300 plates (12 bags × 25 plates)	<input checked="" type="checkbox"/> green	0030 128.796*2	951020632*2
blue, 300 plates (12 bags × 25 plates)	<input checked="" type="checkbox"/> blue	0030 128.842*2	951020648*2
red, 300 plates (12 bags × 25 plates)	<input checked="" type="checkbox"/> red	0030 128.850*2	951020653*2
<b>twin.tec® PCR Plate 96, semi-skirted, PCR clean</b>			
colorless, 25 pcs.	<input type="checkbox"/> colorless	0030 128.575	951020303
yellow, 25 pcs.	<input checked="" type="checkbox"/> yellow	0030 128.583	951020320
green, 25 pcs.	<input checked="" type="checkbox"/> green	0030 128.591	951020346
blue, 25 pcs.	<input checked="" type="checkbox"/> blue	0030 128.605	951020362
red, 25 pcs.	<input checked="" type="checkbox"/> red	0030 128.613	951020389
colorless, 300 plates (12 bags × 5 plates)	<input type="checkbox"/> colorless	0030 128.869	951020600
<b>twin.tec® PCR Plate 96, unskirted, low profile, PCR clean</b>			
colorless, 20 pcs.	<input type="checkbox"/> colorless	0030 133.307	0030 133.307
yellow, 20 pcs.	<input checked="" type="checkbox"/> yellow	0030 133.315	0030 133.315
green, 20 pcs.	<input checked="" type="checkbox"/> green	0030 133.323	0030 133.323
blue, 20 pcs.	<input checked="" type="checkbox"/> blue	0030 133.331	0030 133.331
red, 20 pcs.	<input checked="" type="checkbox"/> red	0030 133.340	0030 133.340
<b>twin.tec® PCR Plate 96, unskirted, 250 µL, PCR clean</b>			
colorless, 20 pcs.	<input type="checkbox"/> colorless	0030 133.366	0030 133.366
blue, 20 pcs.	<input checked="" type="checkbox"/> blue	0030 133.390	0030 133.390

\*1 Several twin.tec® plates are also available in the purity grade »Forensic DNA Grade« (www.eppendorf.com/plates)

\*2 Large customer packs

# Eppendorf twin.tec® Trace PCR Plates

## Ordering information

Description	OptiTrack® frame color	International order no.
<b>twin.tec® Trace PCR Plate 96, skirted, PCR clean</b>		
colorless, 25 pcs.	<input type="checkbox"/> colorless	0030 129.768
crystal blue, 25 pcs.	<input checked="" type="checkbox"/> crystal blue	0030 129.776
fuchsia, 25 pcs.	<input checked="" type="checkbox"/> fuchsia	0030 129.784
<b>twin.tec® Trace PCR Plate 96 LoBind, skirted, PCR clean</b>		
colorless, 20 pcs.	<input type="checkbox"/> colorless	0030 129.822

## Ordering information

Description	OptiTrack® frame color	International order no.	North America order no.
<b>twin.tec® Trace PCR Plate 96, unskirted, divisible, low profile, PCR clean</b>			
colorless, 20 pcs.	<input type="checkbox"/> colorless	0030 133.358	0030 133.358
blue, 20 pcs.	<input checked="" type="checkbox"/> blue	0030 133.382	0030 133.382
<b>twin.tec® Trace PCR Plate 96, unskirted, divisible, 250 µL, PCR clean</b>			
colorless, 20 pcs.	<input type="checkbox"/> colorless	0030 133.374	0030 133.374
blue, 20 pcs.	<input checked="" type="checkbox"/> blue	0030 133.404	0030 133.404
<b>twin.tec® microbiology Trace PCR Plate 96, skirted</b>			
colorless, 10 pcs.	<input type="checkbox"/> colorless	0030 129.300	0030 129.300
blue, 10 pcs.	<input checked="" type="checkbox"/> blue	0030 129.318	0030 129.318
<b>twin.tec® microbiology Trace PCR Plate 96, semi-skirted</b>			
colorless, 10 pcs.	<input type="checkbox"/> colorless	0030 129.326	0030 129.326
blue, 10 pcs.	<input checked="" type="checkbox"/> blue	0030 129.334	0030 129.334
<b>twin.tec® microbiology Trace PCR Plate 384</b>			
colorless, 10 pcs.	<input type="checkbox"/> colorless	0030 129.342	0030 129.342
blue, 10 pcs.	<input checked="" type="checkbox"/> blue	0030 129.350	0030 129.350
<b>twin.tec® Trace PCR Plate 384, PCR clean</b>			
colorless, 25 pcs.	<input type="checkbox"/> colorless	0030 128.508	951020702
yellow, 25 pcs.	<input checked="" type="checkbox"/> yellow	0030 128.516	951020711
green, 25 pcs.	<input checked="" type="checkbox"/> green	0030 128.524	951020729
blue, 25 pcs.	<input checked="" type="checkbox"/> blue	0030 128.532	951020737
red, 25 pcs.	<input checked="" type="checkbox"/> red	0030 128.540	951020745
colorless, 300 plates (12 bags × 25 plates)	<input type="checkbox"/> colorless	0030 128.931*2	951020539*2
yellow, 300 plates (12 bags × 25 plates)	<input checked="" type="checkbox"/> yellow	0030 128.940*2	951020541*2
green, 300 plates (12 bags × 25 plates)	<input checked="" type="checkbox"/> green	0030 128.958*2	951020552*2
blue, 300 plates (12 bags × 25 plates)	<input checked="" type="checkbox"/> blue	0030 128.966*2	951020573*2
red, 300 plates (12 bags × 25 plates)	<input checked="" type="checkbox"/> red	0030 128.974*2	951020594*2

# Eppendorf twin.tec® Trace PCR Plate BioBased

## Ordering information

Description	Frame color	International order no.
<b>Eppendorf twin.tec® Trace PCR Plate BioBased 96, skirted, 150 µL, PCR clean</b>		
colorless, 25 plates	<input type="checkbox"/> colorless	0030 129 849
spring green, 25 plates	<input checked="" type="checkbox"/> spring green	0030 129 857
<b>twin.tec Trace PCR Plate BioBased 96 LoBind, skirted, PCR clean</b>		
colorless, 25 plates (5 bags × 5 plates)	colorless	0030 531.086
<b>twin.tec Trace PCR Plate BioBased 96, semi-skirted, PCR clean</b>		
colorless, 25 plates (5 bags × 5 plates)	colorless	0030 531.043
<b>twin.tec Trace PCR Plate BioBased 96 LoBind, semi-skirted, PCR clean</b>		
colorless, 25 plates (5 bags × 5 plates)	colorless	0030 531.060
<b>twin.tec Trace PCR Plate BioBased 384, PCR clean</b>		
colorless, 25 plates (5 bags × 5 plates)	colorless	0030 531.051
<b>twin.tec Trace PCR Plate BioBased 384 LoBind, PCR clean</b>		
colorless, 25 plates (5 bags × 5 plates)	colorless	0030 531.078

\*Can replace the according equivalent Eppendorf twin.tec PCR Plates and Eppendorf twin.tec Trace PCR Plates.

\*2 Large customer packs

# Eppendorf Deepwell Plates

## Ordering information

Description	OptiTrack® frame color	International order no.	North America order no.
<b>Deepwell Plate 96/2000 µL, wells clear, 2,000 µL</b>			
PCR clean, 20 plates (5 bags × 4 plates)	<input type="checkbox"/> white	0030 501.306	951033405
PCR clean, 20 plates (5 bags × 4 plates)	<input checked="" type="checkbox"/> yellow	0030 501.314	951033421
PCR clean, 20 plates (5 bags × 4 plates)	<input checked="" type="checkbox"/> green	0030 501.330	951033464
PCR clean, 20 plates (5 bags × 4 plates)	<input checked="" type="checkbox"/> blue	0030 501.349	951033481
PCR clean, 80 plates (10 bags × 8 plates)	<input type="checkbox"/> white	0030 505.301*	951033600*
sterile, 20 plates (5 bags × 4 plates)	<input type="checkbox"/> white	0030 502.302	951033502
sterile, 20 plates (5 bags × 4 plates)	<input checked="" type="checkbox"/> yellow	0030 502.310	951033529
sterile, 20 plates (5 bags × 4 plates)	<input checked="" type="checkbox"/> green	0030 502.337	951033561
sterile, 20 plates (5 bags × 4 plates)	<input checked="" type="checkbox"/> blue	0030 502.345	951033588
sterile, 80 plates (10 bags × 8 plates)	<input type="checkbox"/> white	0030 506.308*	951033707*
<b>Deepwell Plate 96/1000 µL, wells clear, 1,000 µL</b>			
PCR clean, 20 plates (5 bags × 4 plates)	<input type="checkbox"/> white	0030 501.209	951032603
PCR clean, 20 plates (5 bags × 4 plates)	<input checked="" type="checkbox"/> yellow	0030 501.217	951032620
PCR clean, 20 plates (5 bags × 4 plates)	<input checked="" type="checkbox"/> green	0030 501.233	951032662
PCR clean, 20 plates (5 bags × 4 plates)	<input checked="" type="checkbox"/> blue	0030 501.241	951032689
PCR clean, 80 plates (10 bags × 8 plates)	<input type="checkbox"/> white	0030 505.204*	951033006*
sterile, 20 plates (5 bags × 4 plates)	<input type="checkbox"/> white	0030 502.205	951032701
sterile, 20 plates (5 bags × 4 plates)	<input checked="" type="checkbox"/> yellow	0030 502.213	951032727
sterile, 20 plates (5 bags × 4 plates)	<input checked="" type="checkbox"/> green	0030 502.230	951032760
sterile, 20 plates (5 bags × 4 plates)	<input checked="" type="checkbox"/> blue	0030 502.248	951032786
sterile, 80 plates (10 bags × 8 plates)	<input type="checkbox"/> white	0030 506.200*	951033103*
<b>Deepwell Plate 96/500 µL, wells clear, 500 µL</b>			
PCR clean, 40 plates (5 bags × 8 plates)	<input type="checkbox"/> white	0030 501.101	951031801
PCR clean, 40 plates (5 bags × 8 plates)	<input checked="" type="checkbox"/> yellow	0030 501.110	951031828
PCR clean, 40 plates (5 bags × 8 plates)	<input checked="" type="checkbox"/> green	0030 501.136	951031861
PCR clean, 40 plates (5 bags × 8 plates)	<input checked="" type="checkbox"/> blue	0030 501.144	951031887
PCR clean, 120 plates (10 bags × 12 plates)	<input type="checkbox"/> white	0030 505.107*	951032204*
sterile, 40 plates (5 bags × 8 plates)	<input type="checkbox"/> white	0030 502.108	951031909
sterile, 40 plates (5 bags × 8 plates)	<input checked="" type="checkbox"/> yellow	0030 502.116	951031925
sterile, 40 plates (5 bags × 8 plates)	<input checked="" type="checkbox"/> green	0030 502.132	951031968
sterile, 40 plates (5 bags × 8 plates)	<input checked="" type="checkbox"/> blue	0030 502.140	951031984
sterile, 120 plates (10 bags × 12 plates)	<input type="checkbox"/> white	0030 506.103*	951032301*
<b>Deepwell Plate 384/200 µL, wells clear, 200 µL</b>			
PCR clean, 40 plates (5 bags × 8 plates)	<input type="checkbox"/> white	0030 521.102	951031003
PCR clean, 120 plates (10 bags × 12 plates)	<input type="checkbox"/> white	0030 525.108*	951031402*
sterile, 40 plates (5 bags × 8 plates)	<input type="checkbox"/> white	0030 522.109	951031101
sterile, 120 plates (10 bags × 12 plates)	<input type="checkbox"/> white	0030 526.104*	951031500*

\* Large customer packs

# Eppendorf Microplates

## Ordering information

Description	OptiTrack® frame color	International order no.	North America order no.
<b>Microplate 96/F, wells clear</b>			
PCR clean, 80 plates (5 bags × 16 plates)	<input type="checkbox"/> white	0030 601.106	951040005
sterile, 80 plates (5 bags × 16 plates)	<input type="checkbox"/> white	0030 602.102	951040021
<b>Microplate 96/U, wells clear</b>			
PCR clean, 80 plates (5 bags × 16 plates)	<input type="checkbox"/> white	0030 601.203	951040048
sterile, 80 plates (5 bags × 16 plates)	<input type="checkbox"/> white	0030 602.200	951040081
<b>Microplate 96/V, wells clear</b>			
PCR clean, 80 plates (5 bags × 16 plates)	<input type="checkbox"/> white	0030 601.300	951040188
sterile, 80 plates (5 bags × 16 plates)	<input type="checkbox"/> white	0030 602.307	951040227
<b>Microplate 384/F, wells clear</b>			
PCR clean, 80 plates (5 bags × 16 plates)	<input type="checkbox"/> white	0030 621.107	951040341
sterile, 80 plates (5 bags × 16 plates)	<input type="checkbox"/> white	0030 622.103	951040383
<b>Microplate 384/V</b>			
PCR clean, 80 plates (5 bags × 16 plates)	<input type="checkbox"/> white	0030 621.301	951040421
sterile, 80 plates (5 bags × 16 plates)	<input type="checkbox"/> white	0030 622.308	951040464

# Eppendorf Assay and Reader Microplates

## Ordering information

Description	Well color	Border color	International order no.	North America order no.
<b>Microplate 96/F</b> , wells white, PCR clean, border gray, 80 plates (5 bags × 16 plates)	<input type="checkbox"/> white	<input checked="" type="checkbox"/> gray	0030 601.475	951040137
<b>Microplate 96/U</b> , wells white, PCR clean, border gray, 80 plates (5 bags × 16 plates)	<input type="checkbox"/> white	<input checked="" type="checkbox"/> gray	0030 601.572	951040145
<b>Microplate 96/V</b> , wells white, PCR clean, border gray, 80 plates (5 bags × 16 plates)	<input type="checkbox"/> white	<input checked="" type="checkbox"/> gray	0030 601.670	951040308
<b>Microplate 384/V</b> , wells white, PCR clean, border gray, 80 plates (5 bags × 16 plates)	<input type="checkbox"/> white	<input checked="" type="checkbox"/> gray	0030 621.670	951040503
<b>Microplate 96/F</b> , wells black, PCR clean, border white, 80 plates (5 bags × 16 plates)	<input checked="" type="checkbox"/> black	<input type="checkbox"/> white	0030 601.700	951040196
<b>Microplate 96/U</b> , wells black, PCR clean, border white, 80 plates (5 bags × 16 plates)	<input checked="" type="checkbox"/> black	<input type="checkbox"/> white	0030 601.807	951040102
<b>Microplate 96/V</b> , wells black, PCR clean, border white, 80 plates (5 bags × 16 plates)	<input checked="" type="checkbox"/> black	<input type="checkbox"/> white	0030 601.904	951040260
<b>Microplate 384/V</b> , wells black, PCR clean, border white, 80 plates (5 bags × 16 plates)	<input checked="" type="checkbox"/> black	<input type="checkbox"/> white	0030 621.905	951040481



# Eppendorf Protein LoBind Plates

## Ordering information: Eppendorf LoBind®

Description	OptiTrack® frame color	International order no.	North America order no.
<b>Microplate 384/V-PP, Protein LoBind</b>			
PCR clean, 80 plates (5 × 16 plates)	<input type="checkbox"/> white	0030 624.300	951040589
PCR clean, 240 plates (10 × 24 plates)	<input type="checkbox"/> white	0030 628.306*	951040601*
<b>Deepwell Plate 96/2000 µL, Protein LoBind</b>			
PCR clean, 20 plates (5 bags × 4 plates)	<input type="checkbox"/> white	0030 504.305	0030 504.305
<b>Deepwell Plate 96/1000 µL, Protein LoBind</b>			
PCR clean, 20 plates (5 bags × 4 plates)	<input type="checkbox"/> white	0030 504.208	951032905
PCR clean, 20 plates (5 bags × 4 plates)	<input checked="" type="checkbox"/> yellow	0030 504.216	951032921
PCR clean, 80 plates (10 bags × 8 plates)	<input type="checkbox"/> white	0030 508.203*	951033308*
<b>Deepwell Plate 96/500 µL, Protein LoBind</b>			
PCR clean, 40 plates (5 bags × 8 plates)	<input type="checkbox"/> white	0030 504.100	951032107
PCR clean, 40 plates (5 bags × 8 plates)	<input checked="" type="checkbox"/> yellow	0030 504.119	951032123
PCR clean, 120 plates (10 bags × 12 plates)	<input type="checkbox"/> white	0030 508.106*	951032506*
<b>Deepwell Plate 384/200 µL, Protein LoBind</b>			
PCR clean, 40 plates (5 bags × 8 plates)	<input type="checkbox"/> white	0030 524.101	951031305
PCR clean, 120 plates (10 bags × 12 plates)	<input type="checkbox"/> white	0030 528.107*	951031704*

\* Large customer packs

# Eppendorf DNA LoBind Plates

## Ordering information: Eppendorf LoBind®

Description	OptiTrack® frame color	International order no.	North America order no.
<b>Microplate 96/V-PP, DNA LoBind</b>			
PCR clean, 80 plates (5 bags × 16 plates)	<input type="checkbox"/> white	0030 603.303	0030 603.303
<b>Microplate 384/V-PP, DNA LoBind</b>			
PCR clean, 80 plates (5 bags × 16 plates)	<input type="checkbox"/> white	0030 623.304	951040546
PCR clean, 240 plates (10 bags × 24 plates)	<input type="checkbox"/> white	0030 627.300*	0030 627.300*
<b>Deepwell Plate 96/1000 µL, DNA LoBind</b>			
PCR clean, 20 plates (5 bags × 4 plates)	<input type="checkbox"/> white	0030 503.201	951032808
PCR clean, 20 plates (5 bags × 4 plates)	<input checked="" type="checkbox"/> blue	0030 503.244	951032883
PCR clean, 80 plates (10 bags × 8 plates)	<input type="checkbox"/> white	0030 507.207*	951033201*
<b>Deepwell Plate 96/500 µL, DNA LoBind</b>			
PCR clean, 40 plates (5 bags × 8 plates)	<input type="checkbox"/> white	0030 503.104	951032000
PCR clean, 40 plates (5 bags × 8 plates)	<input checked="" type="checkbox"/> blue	0030 503.147	951032085
PCR clean, 120 plates (10 bags × 12 plates)	<input type="checkbox"/> white	0030 507.100*	951032409*
<b>Deepwell Plate 384/200 µL, DNA LoBind</b>			
PCR clean, 40 plates (5 bags × 8 plates)	<input type="checkbox"/> white	0030 523.105	951031208
PCR clean, 120 plates (10 bags × 12 plates)	<input type="checkbox"/> white	0030 527.100*	951031607*

\* Large customer packs

# Eppendorf twin.tec® PCR Plates LoBind

## Ordering information

Description	OptiTrack® frame color	International order no.
<b>twin.tec® PCR Plate 96 LoBind, skirted, PCR clean</b>		
colorless, 25 plates (5 bags × 5 plates)	<input type="checkbox"/> colorless	0030 129.512
yellow, 25 plates (5 bags × 5 plates)	<input checked="" type="checkbox"/> yellow	0030 129.679
green, 25 plates (5 bags × 5 plates)	<input checked="" type="checkbox"/> green	0030 129.660
blue, 25 plates (5 bags × 5 plates)	<input checked="" type="checkbox"/> blue	0030 129.580
red, 25 plates (5 bags × 5 plates)	<input checked="" type="checkbox"/> red	0030 129.598
yellow, 300 plates (12 bags × 25 plates)	<input checked="" type="checkbox"/> yellow	0030 129.563*
green, 300 plates (12 bags × 25 plates)	<input checked="" type="checkbox"/> green	0030 129.555*
orange, 300 plates (12 bags × 25 plates)	<input checked="" type="checkbox"/> orange	0030 129.571*
<b>twin.tec® PCR Plate 96 LoBind, semi-skirted, PCR clean</b>		
colorless, 25 plates (5 bags × 5 plates)	<input type="checkbox"/> colorless	0030 129.504
<b>twin.tec® PCR Plate 384 LoBind, skirted, PCR clean</b>		
colorless, 25 plates (5 bags × 5 plates)	<input type="checkbox"/> colorless	0030 129.547
<b>twin.tec Trace PCR Plate 96 LoBind, skirted, PCR clean</b>		
colorless, 25 plates (5 bags × 5 plates)	<input type="checkbox"/> colorless	0030 129.822

\* Large customer packs

# Eppendorf twin.tec® *real-time* PCR Plates

## Ordering information

Description	OptiTrack® frame color	International order no.	North America order no.
<b>twin.tec® 96 real-time PCR Plate, skirted, PCR Clean</b>			
blue, 25 pcs.	<input checked="" type="checkbox"/> blue	0030 132.505	951022003
white, 25 pcs.	<input type="checkbox"/> white	0030 132.513	951022015
<b>twin.tec® 96 real-time PCR Plate, semi-skirted, PCR Clean</b>			
blue, 25 pcs.	<input checked="" type="checkbox"/> blue	0030 132.530	951022043
white, 25 pcs.	<input type="checkbox"/> white	0030 132.548	951022055
<b>twin.tec® 96 real-time PCR Plate, unskirted low profile, PCR Clean</b>			
blue, 20 pcs.	<input checked="" type="checkbox"/> blue	0030 132.718	0030 132.718
white, 20 pcs.	<input type="checkbox"/> white	0030 132.700	0030 132.700

# Sealing Options for Eppendorf Plates®

## Ordering information

Description	International order no.
<b>Sealing options for Eppendorf Plates®</b>	
<b>Eppendorf Storage Film</b> , self-adhesive, PCR clean, 100 pcs. (2 bags × 50 pcs.)	0030 127.870
<b>Eppendorf Storage Foil</b> , self-adhesive, PCR clean, 100 pcs.	0030 127.889
<b>Eppendorf Sealing Mat</b> , for DWP 96/1000, Eppendorf Quality, 80 pcs. (5 bags × 16 pcs.)	0030 127.978
<b>Eppendorf Sealing Mat</b> , for DWP 96/2000, Eppendorf Quality, 50 pcs. (5 bags × 10 pcs.)	0030 127.960
<b>Eppendorf Plate Lid</b> , for MTP and DWP, PCR clean, 80 pcs. (5 bags × 16 pcs.)	0030 131.517
<b>Eppendorf Plate Lid</b> , for MTP and DWP, sterile, 80 pcs. (5 bags × 16 pcs.)	0030 131.525
<b>Sealing options for PCR Plates</b>	
<b>Masterclear® real-time PCR Film adhesive</b> , 100 sheets	0030 132.904
<b>Heat Sealing Film</b> , 100 pcs.	0030 127.838
<b>Heat Sealing Foil</b> , 100 pcs.	0030 127.854
<b>PCR Film (adhesive)</b> , 100 pcs.	0030 127.811
<b>PCR Foil (adhesive)</b> , 100 pcs.	0030 127.820

# Eppendorf SafeCode Plates (pre-barcoded)

Ordering information			
Description	OptiTrack® frame color	International order no.	North America order no.
<b>SafeCode Plates can be ordered directly via our eShop or via our dealers</b>			
<b>twin.tec® PCR Plate 96, skirted, PCR clean</b> colorless, 25 plates (5 bags × 5 plates)	<input type="checkbox"/> colorless	0030 113.560	0030 113.560
<b>twin.tec® PCR Plate 384, skirted, PCR clean</b> colorless, 25 plates (5 bags × 5 plates)	<input type="checkbox"/> colorless	0030 113.578	0030 113.578
<b>Deepwell Plate 96/2000 µL, wells clear, PCR clean</b> white, 20 plates (5 bags × 4 plates)	<input type="checkbox"/> white	0030 113.527	0030 113.527
<b>Deepwell Plate 96/1000 µL, wells clear, PCR clean</b> white, 20 plates (5 bags × 4 plates)	<input type="checkbox"/> white	0030 113.535	0030 113.535
<b>Deepwell Plate 96/500 µL, wells clear , PCR clean</b> white, 20 plates (5 bags × 8 plates)	<input type="checkbox"/> white	0030 113.543	0030 113.543
<b>Deepwell Plate 384/200 µL, wells clear , PCR clean</b> white, 20 plates (5 bags × 8 plates)	<input type="checkbox"/> white	0030 113.551	0030 113.551
<b>Microplate 96/V, wells clear , PCR clean</b> white, 80 plates (5 bags × 16 plates)	<input type="checkbox"/> white	0030 113.586	0030 113.586
<b>Microplate 384/V, wells clear , PCR clean</b> white, 80 plates (5 bags × 16 plates)	<input type="checkbox"/> white	0030 113.594	0030 113.594

# Eppendorf Plates with Customized Barcodes

Ordering information			
Description	International order no.	North America order no.	
<i>To ask for a quote please use the barcode customization process in our eShop or contact your dealer. Frame colors are defined during customization process</i>			
<b>twin.tec® PCR plates 96, skirted</b> standard, PCR clean, 25 plates (5 bags × 5 plates)	0030 128.460	951021113	
standard, PCR clean, 300 plates (12 bags × 25 plates)	0030 128.702*	951021909*	
microbiology, 10 plates (single blistered)	0030 129.369	0030 129.369	
LoBind, PCR clean, 25 plates (5 bags × 5 plates)	0030 129.539	0030 129.539	
real-time, PCR clean, 25 plates (5 bags × 5 plates)	0030 132.572	0030 132.572	
real-time, PCR clean, 300 plates (12 bags × 25 plates)	0030 132.602*	0030 132.602*	
twin.tec® Trace, PCR clean, 25 plates (5 bags × 5 plates)	0030 129.814	0030 132.602	
twin.tec® Trace, LoBind, PCR clean, 25 plates (5 bags × 5 plates)	0030 129.830	0030 129.814	
<b>twin.tec® PCR plates 96, semi-skirted</b> standard, PCR clean, 25 plates (5 bags × 5 plates)	0030 128.478	951021121	
standard, PCR clean, 300 plates (12 bags × 25 plates)	0030 128.877*	951021808*	
microbiology, 10 plates (single blistered)	0030 129.377	0030 129.377	
LoBind, PCR clean, 25 plates (5 bags × 5 plates)	0030 129.520	0030 129.520	
real-time, PCR clean, 25 plates (5 bags × 5 plates)	0030 132.564	0030 132.564	
real-time, PCR clean, 300 plates (12 bags × 25 plates)	0030 132.599*	0030 132.599*	
Forensic DNA Grade, 10 plates (single blistered)	0030 129.695	0030 129.695	
<b>twin.tec® PCR plates 384</b> standard, PCR clean, 25 plates (5 bags × 5 plates)	0030 128.486	951021105	
standard, PCR clean, 300 plates (12 bags × 25 plates)	0030 128.338*	951021101	
microbiology, 10 plates (single blistered)	0030 129.385	0030 129.385	
LoBind, PCR clean, 25 plates (5 bags × 5 plates)	0030 129.687	0030 129.687	
real-time, PCR clean, 25 plates (5 bags × 5 plates)	0030 132.580	0030 132.580	
real-time, PCR clean, 300 plates (12 bags × 5 plates)	0030 132.610*	0030 132.610*	

Ordering information			
Description	International order no.	North America order no.	
<b>Deepwell Plate 96/2000µL, wells clear</b> PCR clean, 80 plates (10 bags × 8 plates)	0030 509.307*	0030 509.307*	
sterile, 80 plates (10 bags × 8 plates)	0030 509.315*	0030 509.315*	
Protein LoBind, PCR clean, 80 plates (10 bags × 8 plates)	0030 509.331	0030 509.331	
<b>Deepwell Plate 96/1000µL, wells clear</b> PCR clean, 80 plates (10 bags × 8 plates)	0030 509.200*	0030 509.200*	
sterile, 80 plates (10 bags × 8 plates)	0030 509.218*	0030 509.218*	
DNA LoBind, PCR clean, 80 plates (10 bags × 8 plates)	0030 509.226*	0030 509.226*	
Protein LoBind, PCR clean, 80 plates (10 bags × 8 plates)	0030 509.234*	0030 509.234*	
<b>Deepwell Plate 96/500µL, wells clear</b> PCR clean, 120 plates (10 bags × 12 plates)	0030 509.102*	0030 509.102*	
sterile, 120 plates (10 bags × 12 plates)	0030 509.110*	0030 509.110*	
DNA LoBind, PCR clean, 120 plates (10 bags × 12 plates)	0030 509.129*	0030 509.129*	
Protein LoBind, PCR clean, 120 plates (10 bags × 12 plates)	0030 509.137*	0030 509.137*	
<b>Deepwell Plate 384/200µL, wells clear</b> PCR clean, 120 plates (10 bags × 12 plates)	0030 510.100*	0030 510.100*	
sterile, 120 plates (10 bags × 12 plates)	0030 510.119*	0030 510.119*	
DNA LoBind, PCR clean, 120 plates (10 bags × 12 plates)	0030 510.127*	0030 510.127*	
Protein LoBind, PCR clean, 120 plates (10 bags × 12 plates)	0030 510.135*	0030 510.135*	
<b>Microplate 96, wells clear</b> F-bottom, white frame, PCR clean, 80 plates (5 bags × 16 plates)	0030 609.107	0030 609.107	
F-bottom, white frame, sterile, 80 plates (5 bags × 16 plates)	0030 609.115	0030 609.115	
U-bottom, white frame, PCR clean, 80 plates (5 bags × 16 plates)	0030 609.204	0030 609.204	
U-bottom, white frame, sterile, 80 plates (5 bags × 16 plates)	0030 609.212	0030 609.212	
V-bottom, white frame, PCR clean, 80 plates (5 bags × 16 plates)	0030 609.301	0030 609.301	
V-bottom, white frame, sterile, 80 plates (5 bags × 16 plates)	0030 609.310	0030 609.310	
<b>Microplate 96, wells white</b> U-bottom, white frame, PCR clean, 80 plates (5 bags × 16 plates)	0030 609.506	0030 609.506	
V-bottom, white frame, sterile, 80 plates (5 bags × 16 plates)	0030 609.603	0030 609.603	
<b>Microplate 96, wells black</b> F-bottom, white frame, PCR clean, 80 plates (5 bags × 16 plates)	0030 609.700	0030 609.700	
U-bottom, white frame, PCR clean, 80 plates (5 bags × 16 plates)	0030 609.808	0030 609.808	
V-bottom, white frame, sterile, 80 plates (5 bags × 16 plates)	0030 609.905	0030 609.905	
<b>Microplate 384, wells clear</b> F-bottom, white frame, PCR clean, 80 plates (5 bags × 16 plates)	0030 610.105	0030 610.105	
F-bottom, white frame, sterile, 80 plates (5 bags × 16 plates)	0030 610.113	0030 610.113	
V-bottom, white frame, PCR clean, 80 plates (5 bags × 16 plates)	0030 610.300	0030 610.300	
V-bottom, white frame, sterile, 80 plates (5 bags × 16 plates)	0030 610.318	0030 610.318	
V-bottom, white frame, DNA LoBind, 80 plates (5 bags × 16 plates)	0030 610.326	0030 610.326	
V-bottom, white frame, Protein LoBind, 80 plates (5 bags × 16 plates)	0030 610.334	0030 610.334	
<b>Microplate 384, wells white</b> V-bottom, white frame, PCR clean, 80 plates (5 bags × 16 plates)	0030 610.601	0030 610.601	
<b>Microplate 384, wells black</b> V-bottom, white frame, PCR clean, 80 plates (5 bags × 16 plates)	0030 610.903	0030 610.903	

\* Large customer packs

**Your local distributor: [www.eppendorf.com/contact](http://www.eppendorf.com/contact)**  
Eppendorf SE · Barkhausenweg 1 · 22339 Hamburg · Germany  
[eppendorf@eppendorf.com](mailto:eppendorf@eppendorf.com) · [www.eppendorf.com](http://www.eppendorf.com)

[www.eppendorf.com/plates](http://www.eppendorf.com/plates)