

thermo scientific



## Spin More With Less - Thermo Scientific H-Flex 1 Swing Out Rotor

Now offering the highest capacity available for the smallest Sorvall General Purpose Centrifuge

**ThermoFisher**  
SCIENTIFIC

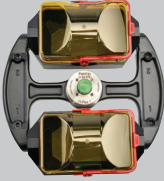

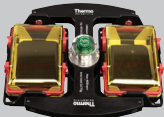



## Big things come in small packages

### Increased flexibility in the Thermo Scientific™ Sorvall™ General Purpose 1.6 L benchtop centrifuge

You can now switch from spinning tubes to microplates without having to change rotors! Help increase your uptime in both clinical and diagnostic applications as well as cell culture and research. The Thermo Scientific™ H-Flex 1 Swing Out Rotor allows for high capacity sample separation in conical tubes, blood tubes and microplates in one rotor for small-footprint general purpose centrifuges.

Help save time, valuable storage space, and improve your ergonomic safety by reducing the number of rotor changes required for your work.

Comes with the Thermo Scientific™ Auto-Lock™ rotor exchange, simple, one-click rotor installation and removal, one-handed Thermo Scientific™ ClickSeal™ Biocontainment Lids and slide-coat finish eliminating the need for lubrication between the rotor cross and buckets.

Tube/Plate Capacities	Enhanced Capacity!	Original Capacity	
	 <p data-bbox="699 1037 802 1062">H-Flex 1</p>	 <p data-bbox="1036 1037 1130 1062">TX-400</p>	 <p data-bbox="1382 1037 1451 1062">M-20</p>
 <p data-bbox="250 1150 505 1213">50 mL Conical Tube Nunc / BD / Corning</p>	<p data-bbox="711 1150 786 1213">16 (2 x 8)</p>	<p data-bbox="1045 1150 1120 1213">16 (4 x 4)</p>	
 <p data-bbox="250 1371 505 1434">15 mL Conical Tube Nunc / BD / Corning</p>	<p data-bbox="711 1371 786 1434">36 (2 x 18)</p>	<p data-bbox="1045 1371 1120 1434">36 (4 x 9)</p>	
 <p data-bbox="250 1520 532 1583">10 / 12 mL Blood Tube BD / Greiner</p>	<p data-bbox="704 1520 795 1583">66 (2 x 33)</p>	<p data-bbox="1039 1520 1130 1583">56 (4 x 14)</p>	
 <p data-bbox="250 1629 505 1692">5 / 7 mL Blood Tube BD / Greiner</p>	<p data-bbox="704 1629 795 1692">84 (2 x 42)</p>	<p data-bbox="1039 1629 1130 1692">76 (2 x 17)</p>	
 <p data-bbox="302 1780 496 1806">Microwell Plate</p>	<p data-bbox="711 1780 786 1843">8 (2 x 4)</p>	<p data-bbox="1370 1780 1445 1843">6 (2 x 3)</p>	
 <p data-bbox="302 1927 496 1953">Deepwell Plate</p>	<p data-bbox="711 1927 786 1990">2 (2 x 1)</p>	<p data-bbox="1370 1927 1445 1990">2 (2 x 1)</p>	

## Sorvall General Purpose Centrifuge speed ratings

Centrifuge	Maximum Speed (rpm)	Maximum RCF (x g)
Sorvall Legend X1, Sorvall ST16	4700	4297
Multifuge X1, Megafuge 16	4700	4297
SL16	4700	4297



Image 1 - H-Flex Rotor Cross



Image 2 - Rotor cross shown with buckets (rotor cross is sold separately, see below for selection)

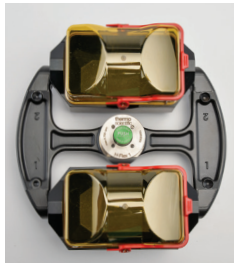


Image 3 - Rotor cross shown with buckets and with biocontainment lids (buckets and rotor cross sold separately, see below for selection)



Image 4 - 50 mL Conical Tube Adapter

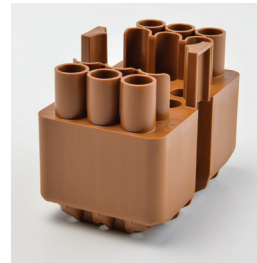


Image 5 - 15 mL Conical Tube Adapter

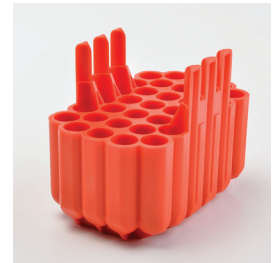


Image 6 - 5/7 mL Blood Collection Tube Adapter

## Adapter Specifications

Description	Rotor Capacity (places x volume, mL)	Maximum Tube Dimensions (diameter x L, mm)	Image	Cat. No.
H-Flex 1 Rotor Cross (Buckets and Lids sold separately)			1	75003300
H-Flex 1 Rotor Buckets, set/2			2	75003301
H-Flex 1 Rotor Biocontainment Lids (Set of 2)			3	75003302
H-Flex 1 Rotor Biocontainment Lid Replacement O-Rings (Set of 2)				75003309
<b>Adapters for H-Flex 1 Rotor (Sets of 2)</b>				
50 mL Conical Tube	16 x 50 mL	30 x 126	4	75003303
15 mL Conical Tube	36 x 15 mL	17 x 121	5	75003304
10/12 mL Blood Collection Tube (16x100)	64 x 10/15 mL	16 x 133	6	75003305
5/7 mL Blood Collection Tube (13x75-100 mm)	84 x 5/7 mL	13 x 10	7	75003306
Microplate Carriers	6 standard 2 deepwell	n/a	8	75003307
H-Flex 1 Rotor 400 mL Bottle and Centri-lab Adapter*	n/a	n/a	9	75003308



Image 7 - 5/7 mL Blood Collection Tube Adapter

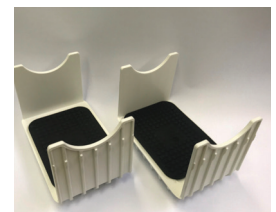


Image 8 - Microplate Adapter

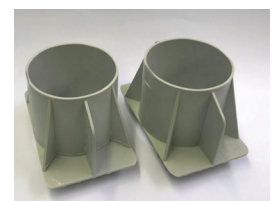


Image 9 - 400 mL Bottle/Centri-lab Adapter

\*A software update requiring a service call by your Thermo Scientific representative may be required. Please contact your local salesperson for more information; 400 mL Bottle/Centri-lab Adapter maximum speed is 3800 rpm and 2800 x g.

## Other Thermo Scientific rotor innovations

### Increased choices

- New steeper well angle enables better pelletization
- Updated LEX version reduces weight by - 1/3 (3.5 pounds) for even easier installation and removal
- Original F15-6x100 still available when higher speeds are needed
- New microliter rotor enables compatibility with shorter 5 mL centrifuge tubes
- Spin 18 small volume conical tubes at once
- ClickSeal Biocontainment Lid for prevention of potential contamination and easy removal for quick sample access

### Increased flexibility



New Fiberlite F10-6x100 LEX Rotor



New MicroClick 18 x 5 mL Rotor

### Thermo Scientific Fiberlite Rotors Ordering information

Cat. No.	Description
75003340	F10-6x100 LEX, 45 degree angle
75005765	MicroClick 18 x 5 Fixed Angle Microtube Rotor

Find out more at [thermofisher.com/rotors](https://thermofisher.com/rotors)

This product is intended for General Laboratory Use. It is the customer's responsibility to ensure that the performance of the product is suitable for customers' specific use or application. © 2019-2020 Thermo Fisher Scientific Inc. All rights reserved. All trademarks are the property of Thermo Fisher Scientific and its subsidiaries unless otherwise specified. BRHFLEX 0120