

GE Healthcare

illustra tissue & cells genomicPrep Mini Spin Kit

# sNAPpier extraction and purification of genomic DNA from tissue and cell samples

illustra™ tissue & cells genomicPrep Mini Spin Kit is designed for the rapid extraction and purification of high molecular weight genomic DNA (gDNA) from a variety of animal tissues and mammalian cell cultures. The procedure can be completed in less than 90 min (sample to gDNA) versus 200 min required with QIAamp™ DNA Mini or DNeasy™ Blood and Tissue Kit.

Purified gDNA is suitable for molecular biology applications including cloning, restriction enzyme digestion, PCR and genotyping.

illustra: Purify. Amplify. Simplify



Tissue & Cells Mini



imagination at work

# illustra tissue & cells genomicPrep Mini Spin Kit

## Faster

- **Sample to gDNA in 90 min** — convenient, streamlined workflow reduces the number of pipetting volume changes and the overall number of steps to deliver results up to 50% faster than comparable product from Qiagen\*
- **Speed with quality** — rapid procedure produces gDNA with minimized shearing suitable for applications such as long PCR

## Simpler

- **Flexibility to meet your needs** — process sample volumes up to twice that of comparable products from Qiagen\* (5 to 50 mg animal tissue and up to  $5 \times 10^6$  cultured cells)
- **Easy to use** — Mini Spin columns reduce the risk of clogging, allowing twice the input material in comparison to Qiagen, so more sample can be processed faster than existing methods
- **User friendly** — color-coded caps and bottles with matching protocol steps minimize the chance for error
- **Easy to follow** — quick reference protocol card provides instructions at a glance for experienced users

## High quality

- **High quality** — optimized protocol delivers intact DNA with an average size of > 20 kb with excellent reproducibility
- **High purity** — no copurification of RNA or contaminants

\* Compared with QIAamp™ DNA Mini or DNeasy™ Blood and Tissue Kit

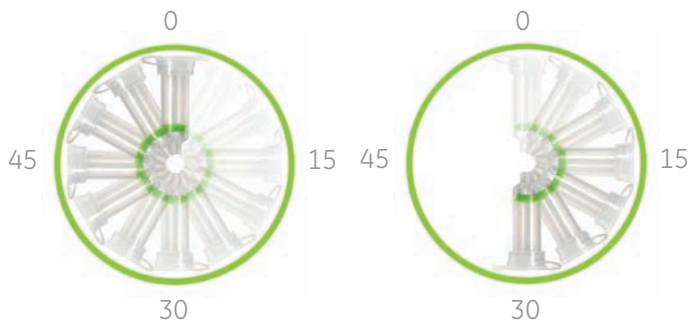
## Key facts

Sample type	Tissue	Cultured cells
Sample input size	5 to 50 mg of animal tissue	Up to $5 \times 10^6$ cultured cells
Elution volume	200 $\mu$ l	200 $\mu$ l
# of steps	5	5
Typical yield	0.5 to 1.5 $\mu$ g DNA/mg of animal tissue <sup>†</sup>	10 to 20 $\mu$ g of gDNA (from $5 \times 10^6$ cells)
Purity	> 1.7	> 1.7
Time/prep	90 min	45 min
Product size	> 20 kb	> 20 kb

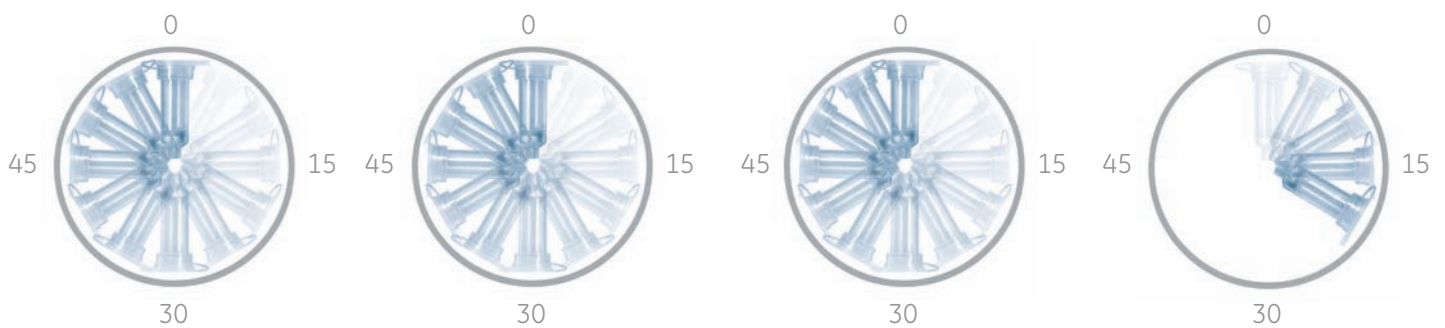
<sup>†</sup>Values shown derived from rat liver samples; actual yields will vary depending on tissue type used.

## Speed:

illustra = 90 min prep

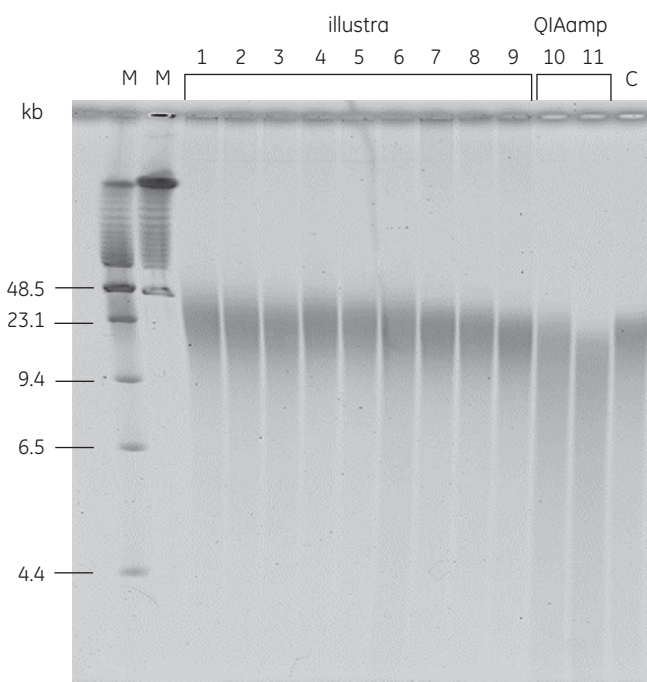


QIAamp = 200 min prep



## Quality and Yield:

Extracted Rat Liver gDNA run on PFGE



	Yield ( $\mu\text{g}$ )
illustra	$21.2 \pm 4$ (n = 54)
QIAamp	$13.8 \pm 4$ (n = 18)

Size > 20 kb

Quality: less degradation than Qiagen

All lanes contain 200 ng gDNA

M1 = Low-range pulsed-field gel electrophoresis marker (PFGE)

M2 = High-range PFGE marker

C = control rat gDNA

See over page for ordering information

## Ordering Information

To order, contact your local GE Healthcare customer service representative quoting the article codes below:

28-9042-75	illustra tissue & cells genomicPrep Mini Spin Kit	50 preps
28-9042-76	illustra tissue & cells genomicPrep Mini Spin Kit	250 preps

[www.gehealthcare.com/illustra](http://www.gehealthcare.com/illustra)

GE Healthcare UK Limited  
Amersham Place  
Little Chalfont  
Buckinghamshire HP7 9NA  
UK

**Asia Pacific:** Tel: +65 6275 1830 Fax: +65 6275 1829 **Australasia** Tel: + 61 2 9899 0999 Fax: +61 2 9899 7511 **Austria** Tel: 01/57606-1619 Fax: 01/57606-1627 **Belgium** Tel: 0800 73 888 Fax: 02 416 82 06 **Canada** Tel: 1 800 463 5800 Fax: 1 800 567 1008 **Central, East, & South East Europe** Tel +43 1 972720 Fax: +43 1 97272 2750 **Denmark** Tel: 45 16 2400 Fax: 45 16 2424 **Eire** Tel: 01494 544000 Fax: 0044 1494 542010 **Finland & Baltics** Tel: +358-(0)9-512 39 40 Fax: +358 (0)9 512 39 439 **France** Tel: 01 6935 6700 Fax: 01 6941 9677 **Germany** Tel: (089) 96281 660 Fax: (089) 96281 620 **Greater China** Tel: +852 2100 6300 Fax: +852 2100 6338 **Italy** Tel: 02 27322 1 Fax: 02 27302 212 **Japan** Tel: +81 3 5331 9336 Fax: +81 3 5331 9370 **Latin America** Tel: +55 11 3933 7300 Fax: +55 11 3933 7304 **Middle East & Africa** Tel: +30 210 9600 687 Fax: +30 210 9600 693 **Netherlands** Tel: 0800 82 82 82 1 Fax: 0800 82 82 82 4 **Norway** Tel: 815 65 555 Fax: 815 65 666 **Portugal** Tel: 21 417 7035 Fax: 21 417 3184 **Russia & other C.I.S. & N.I.S** Tel: +7 (495) 956 5177 Fax: +7 (495) 956 5176 **Spain** Tel: 93 594 49 50 Fax: 93 594 49 55 **Sweden** Tel: 018 612 1990 Fax: 018 612 1910 **Switzerland** Tel: 0848 8028 12 Fax: 0848 8028 13 **UK** Tel: 0800 616928 Fax: 0800 616927 **USA** Tel: +1 800 526 3593 Fax: +1 877 295 8102

For more information about the comparisons mentioned in this document, please refer to data file 28-9162-79.

Qiagen, DNeasy and QIAamp are trademarks of the Qiagen Group.

© 2007 General Electric Company – All rights reserved.  
First published Jan. 2007

All goods and services are sold subject to the terms and conditions of sale of the company within GE Healthcare which supplies them. A copy of these terms and conditions is available on request. Contact your local GE Healthcare representative for the most current information.

GE Healthcare Bio-Sciences Corp., 800 Centennial Avenue, P.O. Box 1327, Piscataway, NJ 08855-1327, US  
GE Healthcare Europe GmbH, Munzinger Strasse 5, D-79111 Freiburg, Germany  
GE Healthcare Bio-Sciences AB, Björkgatan 30, 751 84 Uppsala, Sweden  
GE Healthcare Bio-Sciences KK, Sanken Bldg. 3-25-1, Hyakunincho Shinjuku-ku, Tokyo 169-0073, Japan

28-9162-74 AA 01/2007

