

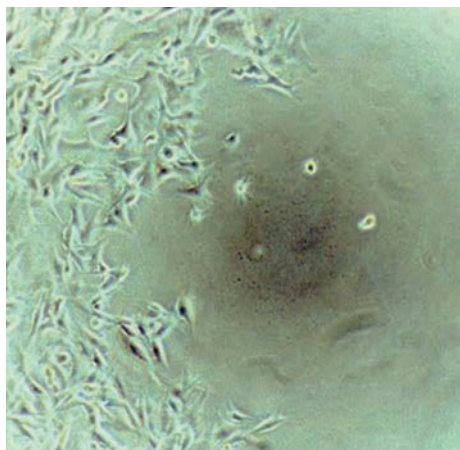


HydroSpeed™ plate washer for 96- and 384-well formats

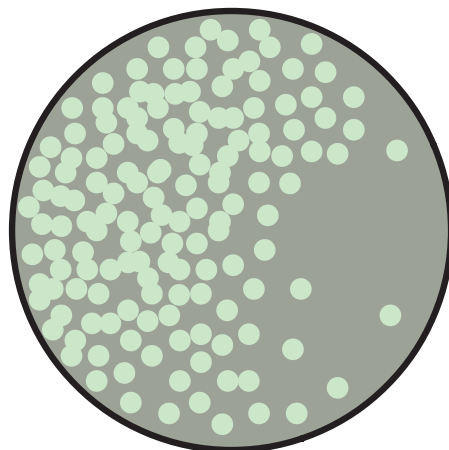
Speed and control for optimized washing of cells, beads and ELISAs

Are you washing away your cells?

Loosely adherent cell lines, such as P815 and HEK 293, are commonly used for a wide range of research applications, but are challenging to wash for typical plate washers. Excessive dispense speeds can cause detachment of cells and holes in the cell layer. Coupled with loss of cells during poorly controlled aspiration, this can lead to reproducibility issues and high CVs, resulting in failed experiments, repeat testing and a loss of productivity.



Cell loss due to aggressive wash conditions



Schematic picture showing a damaged cell layer in a well



Failed results leading to loss of productivity

Discover how the HydroSpeed plate washer with Cell Protection™ can help you resolve these issues!

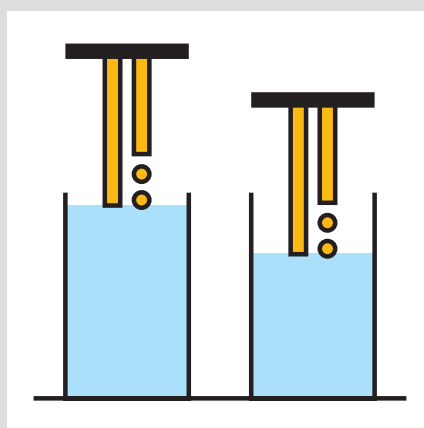
Based on more than 30 years experience in automated liquid handling, we understand that weakly adherent cells require very gentle washing to achieve reproducible results. The HydroSpeed plate washer puts the user in control with Cell Protection, allowing you to dial-in extra gentle wash settings, specific to your cells, microplates and application.

Features of Cell Protection include:

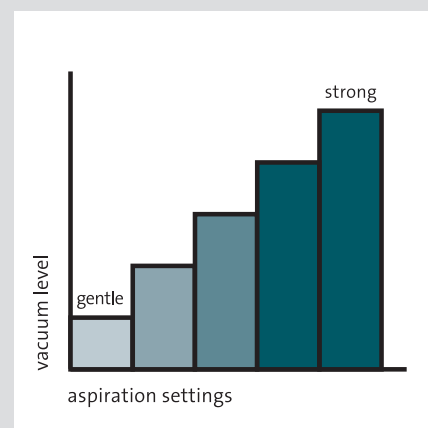
- **Drop-wise dispense speed** to avoid cell detachment
- **Optimization of dispense position** to minimize turbulence in the wells
- **Tunable aspiration parameters**, including needle position and vacuum level, to avoid cell loss
- **Reduced costs** by eliminating the need for a dedicated cell washing head



Extra gentle wash settings for loosely adherent cells



Optimized dispense position via Move function



Tunable aspiration rates to avoid cell loss

Are your magnetic beads being washed away?

Multiplexed assays using magnetic beads are becoming increasingly popular for a variety of applications, but achieving good wash results without losing beads remains a challenge. Automated washing protocols often suffer from low bead recovery rates, due to insufficient bead settling by weak magnets. Poor control of aspiration parameters also makes it difficult to achieve low residual liquid volumes without significant loss of beads, leading to inconsistent results and high CV values.

Manual ✓ good results ✗ no results

	1	2	3	4	5	6	7	8	9
A	✓	✗	✓	✗					
B	✗	✗	✗	✓					
C	✓	✗	✗	✗					
D	✗	✓	✓	✗					
E	✗	✓	✗	✓					
F	✓	✗	✓	✗					
G	✗	✗	✗	✗					
H	✓	✗	✓	✗					

Loss of magnetic beads due to insufficient bead settling



Poor control of vacuum level for aspiration

0.06190	0.06030	0.06020	0.06210	0.06100	0.060
0.06030	0.05830	0.05870	0.06480	0.06340	0.063
0.06270	0.06170	0.06220	0.06440	0.06320	0.063
0.06163	0.06010	0.06037	0.06377	0.06253	0.062
0.06030	0.05830	0.05870	0.06480	0.06340	0.063
0.06270	0.06170	0.06220	0.06440	0.06320	0.063
0.06030	0.05830	0.05870	0.06480	0.06340	0.063
0.06270	0.06170	0.06220	0.06440	0.06320	0.063
0.06190	0.06030	0.06020	0.06210	0.06100	0.060
0.06030	0.05830	0.05870	0.06480	0.06340	0.063
0.06270	0.06170	0.06220	0.06440	0.06320	0.063
0.06163	0.06010	0.06037	0.06377	0.06253	0.062
0.00122	0.00176	0.00176	0.00146	0.00138	0.001
0.06190	0.06030	0.06020	0.06210	0.06100	0.060
0.06030	0.05830	0.05870	0.06480	0.06340	0.063
0.06270	0.06170	0.06220	0.06440	0.06320	0.063
0.06163	0.06010	0.06037	0.06377	0.06253	0.062
0.00122	0.00176	0.00176	0.00146	0.00138	0.001
0.06190	0.06030	0.06020	0.06210	0.06100	0.060
0.06030	0.05830	0.05870	0.06480	0.06340	0.063
0.06270	0.06170	0.06220	0.06440	0.06320	0.063
0.06163	0.06010	0.06037	0.06377	0.06253	0.062
0.06190	0.06030	0.06020	0.06210	0.06100	0.060
0.06030	0.05830	0.05870	0.06480	0.06340	0.063
0.06270	0.06170	0.06220	0.06440	0.06320	0.063
0.06163	0.06010	0.06037	0.06377	0.06253	0.062

Failed experiments due to inconsistent results

Discover how the HydroSpeed plate washer can help you to overcome these problems by using two magnets per well!

Keeping magnetic beads away from the needles during aspiration helps to improve washing performance. Using a patent-pending design with two magnets per well, the HydroSpeed washer protects magnetic beads by settling them at the side of the well during aspiration, achieving low residual volumes while maintaining high bead recovery rates.

Bead recovery features include:

- **Powerful rare-earth magnets** to provide fast and efficient bead settling
- **Two magnets per well** to keep the beads out of the way during washing
- **Adjustable vacuum level and aspiration position** for optimized bead recovery
- **Supports filter washing** of non-magnetic beads via vacuum filtration option



Efficient bead settling via powerful magnets



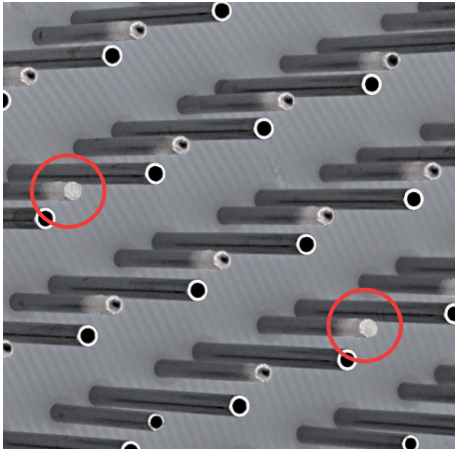
Optimized bead recovery using two magnets per well



Processing of non-magnetic beads via vacuum filtration module

Are you suffering from needle clogging during ELISA washing?

Automated ELISA processing using a microplate washer is now a routine task for many laboratories, yet crystallization of wash buffer within the aspiration/dispense needles remains a common problem. This causes clogging of the needles while the washer is idle between plates, and can lead to loss of entire runs as a result of overflowing wells. Cleaning of wash heads is laborious and time consuming, and can significantly affect productivity if washers are integrated into automated liquid handling systems.



Picture showing blocked dispense needles



Spilling of plate caused by clogged needles



Tedious cleaning of spills

Discover how the HydroSpeed plate washer can take the hassle out of ELISA washing!

The innovative Anti-Clogging™ function actively prevents needle clogging by automatically rinsing and soaking the wash head when the HydroSpeed washer is idle for a pre-defined period. In addition, the wash head can be easily removed for ultrasonic cleaning, with a self-alignment feature to simplify re-installation.

Highlights of active clog prevention include:

- **Anti-Clogging function** to actively prevent needle blockage
- **Pre-defined rinse** procedure makes preventive maintenance easy to perform
- **Easy X-change wash heads** allow intense cleaning in an external ultrasonic bath
- **Wash bottle filters** prevent particles from entering the wash head



Anti Clogging function prevents needle blockage



Easy handling of quick X-change of wash head without tooling



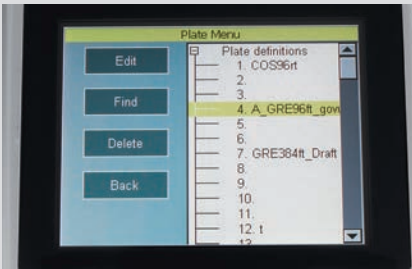
Intense cleaning possibility of wash head in ultrasonic bath

Fast, reliable washing in 96- and 384-well formats



On-board control at your fingertips

Easy-to-use touchscreen interface allows full on-board operation, eliminating the need for an external PC to define wash programs and plate parameters.



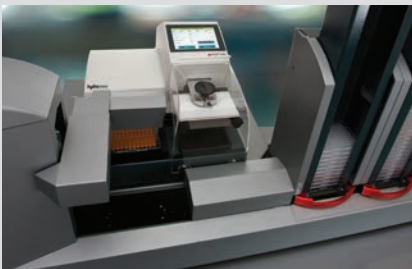
Ready to start

- New plate assistant function for easy teaching of new plates
- Pre-defined plate library, with typical plate parameter settings for commonly used 96- and 384-well plates, allows rapid set-up of new wash protocols.



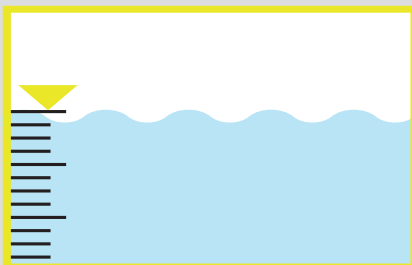
Format and application flexibility

- 96 indexing wash head allows HydroSpeed to be used for washing both 96- and 384-well plates, without swapping wash heads
- 96 indexing wash head supports three applications including ELISA washing, extra gentle cell washing and bead washing providing uncompromised wash performance
- For high wash speed the 384HT wash head is available for parallel processing of all 384-wells.



Ready for reliable operation on a robotic platform

The HydroSpeed washer incorporates an array of sensors – such as the plate positioning sensor – to ensure secure and reliable integration into automated platforms for true walkaway processing.



Liquid level monitoring in waste bottle

- Integrated pressure-based liquid level detection (p-LLD) system informs operator when waste bottle is full
- p-LLD avoids the risk of blockage common to swimmer-based LLD systems mounted in the waste bottle, increasing safety and eliminating additional cleaning steps

✓ 21 CFR Part 11

✓ 98/79/EC IVD-D

Regulatory compliance*

- The HydroSpeed washer is designed to meet the IVD-directive 98/79/EC for Europe, when configured for ELISA washing.
- In combination with HydroControl™ software, it is also prepared to meet FDA's Title 21 CFR part 11.

HydroSpeed – Specifications

General	
Number of disp. channels	1–4
Wash head types	96HT for high speed washing in 96-well format 384HT for high speed washing in 384-well format 96 indexing for flexible washing in 96- & 384-well formats
Wash volume, 96-well format	50–3000 µl in increments of 50 µl
Wash volume, 384-well format	10–1000 µl in increments of 10 µl
Performance	
Wash times, 96-well format	15 secs for 1-cycle wash incl. crosswise asp. step (disp. vol: 300 µl/well, disp. rate: 5, asp. rate: 5, 96HT head)
Wash times, 384-well format	15 secs for 1-cycle wash incl. asp. step (disp. vol: 100 µl/well, disp. rate: 5, asp. rate: 5, 384HT head)
Dispense accuracy @ 300 µl, 96-well format	≤ 5 % across plate, gravimetric measurement**
Dispense accuracy @ 100 µl, 384-well format	≤ 5 % across plate, gravimetric measurement***
Dispense uniformity @ 300 µl, 96-well format	≤ 3 % across plate**
Dispense uniformity @ 100 µl, 384-well format	≤ 4 % across plate***
Residual volume, 96-well format	≤ 2 µl per well, crosswise asp.**
Residual volume, 384-well format	≤ 2 µl per well, single asp.***
Vacuum range for vacuum filtration	-50 to -300 mBar
Power	
Power supply	115 V / 60 Hz 230 V / 50 Hz
Consumption	< 300 VA
Physical	
External dimensions (height/width/depth)	28.8 cm (11.3 in.) / 38.8 cm (15.3 in.) / 43.0 cm (16.9 in.)
Weight	15 kg (33 lbs)
Colour	

** disp. rate: 5, respectively asp. rate: 5, 96HT head, wash buffer plus 0.1% Tween, Greiner® flat-bottom plate

*** disp. rate: 5, respectively asp. rate: 5, 384HT head, wash buffer plus 0.1% Tween, Greiner flat-bottom plate

Tecan – Who we are

Tecan is a leading global provider of laboratory instruments and solutions in biopharmaceuticals, forensics, clinical diagnostics, academic centers and life science industries, and specializes in the development and production of automation solutions, detection instruments such as microplate readers, microarray-related products and washers.

Founded in Switzerland in 1980, Tecan has manufacturing, research and development sites in both North America and Europe, and maintains a sales and service network in 52 countries. To date, Tecan has distributed approximately 20,000 microplate readers worldwide and is committed to continuous technological improvements and compliance to global quality standards.

Australia +61 3 9647 4100 **Austria** +43 62 46 89 33 **Belgium** +32 15 42 13 19 **China** +86 21 220 63 206 **Denmark** +45 70 23 44 50 **France** +33 4 72 76 04 80
Germany +49 79 51 94 170 **Italy** +39 02 92 44 790 **Japan** +81 44 556 73 11 **Netherlands** +31 18 34 48 17 4 **Singapore** +65 644 41 886 **Spain** +34 935 95 25 31
Sweden +46 8 750 39 40 **Switzerland** +41 44 922 89 22 **UK** +44 118 9300 300 **USA** +1 919 361 5200 **Other countries** +43 62 46 89 33

Tecan Group Ltd. makes every effort to include accurate and up-to-date information within this publication, however, it is possible that omissions or errors might have occurred. Tecan Group Ltd. cannot, therefore, make any representations or warranties, expressed or implied, as to the accuracy or completeness of the information provided in this publication. Changes in this publication can be made at any time without notice. All mentioned trademarks are protected by law. In general, the trademarks and designs referenced herein are trademarks, or registered trademarks, of Tecan Group Ltd., Männedorf, Switzerland. A complete list may be found at <http://www.tecan.com/trademarks>. Product names and company names that are not contained in the list but are noted herein may be the trademarks of their respective owners. For technical details and detailed procedures of the specifications provided in this document please contact your Tecan representative.

Tecan is in major countries a registered trademark of Tecan Group Ltd., Männedorf, Switzerland.

© 2015 Tecan Trading AG, Switzerland, all rights reserved.

www.tecan.com/hydrospeed