

aCOLyte3 Software Full Installation Guide

1

Start PC

➔ Log onto PC as an Administrator and shut all running software down

2

Insert software source



Setup.exe

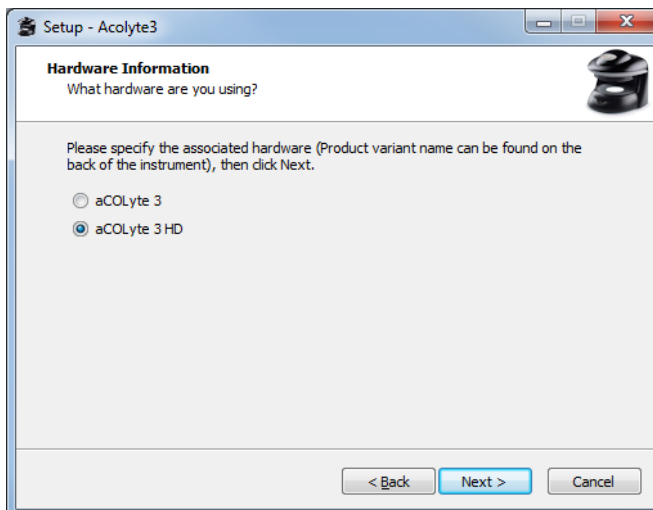
➔ Insert the software source, unzipping if the installation set is zipped. Run the file Setup.exe

3



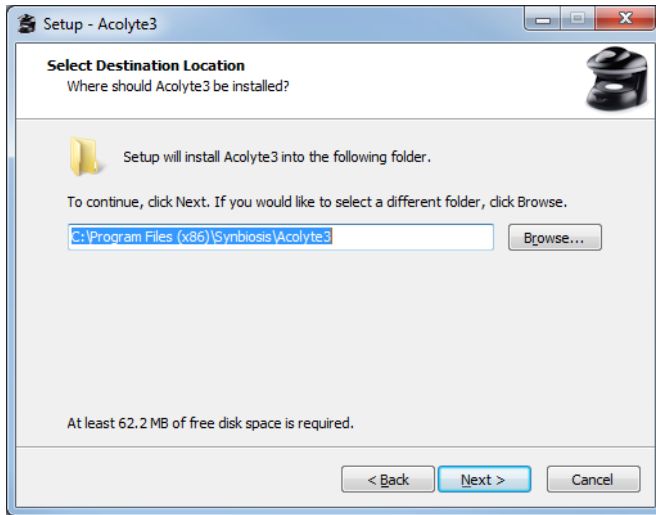
Welcome screen press Next.

4



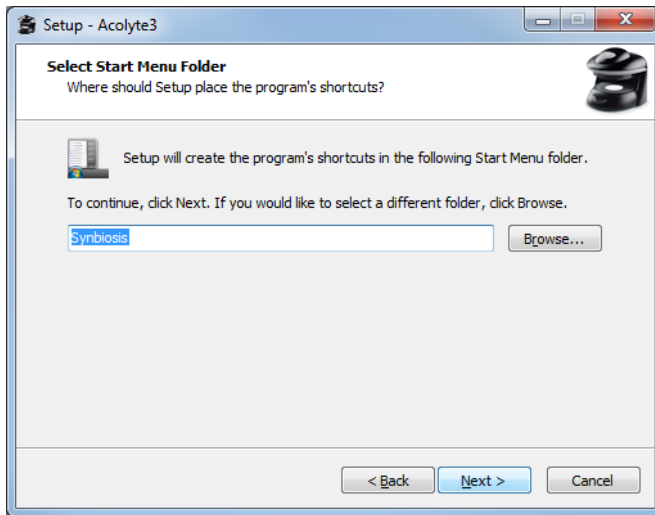
Hardware selection, select appropriate hardware and press Next.

5



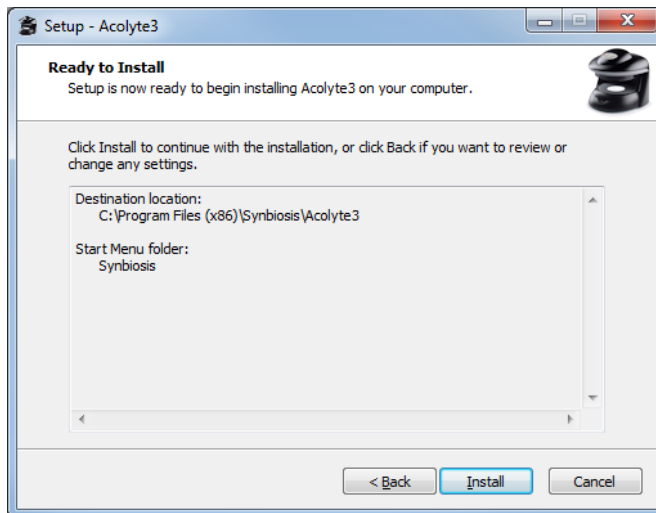
Select the Directory path for the aCOLyte3 software, then press Next.

6



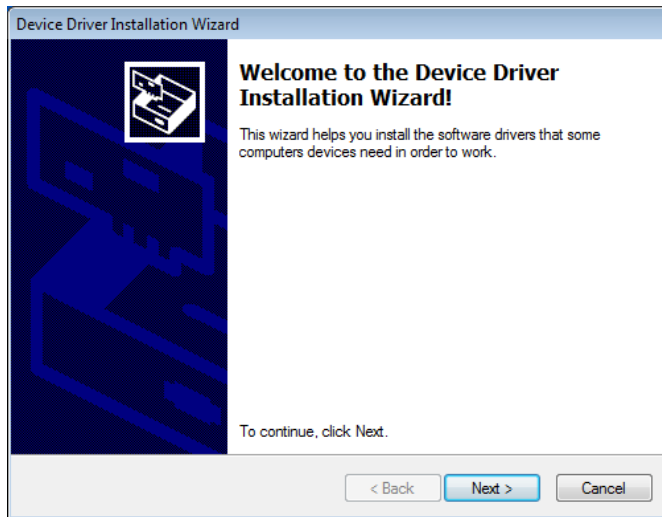
Select the Windows menu start shortcut, then press Next.

7



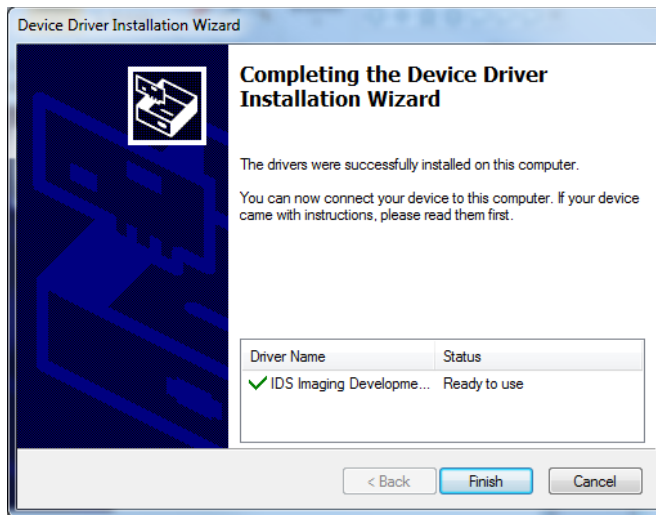
aCOLyte3 software is ready to install, press Install.

8



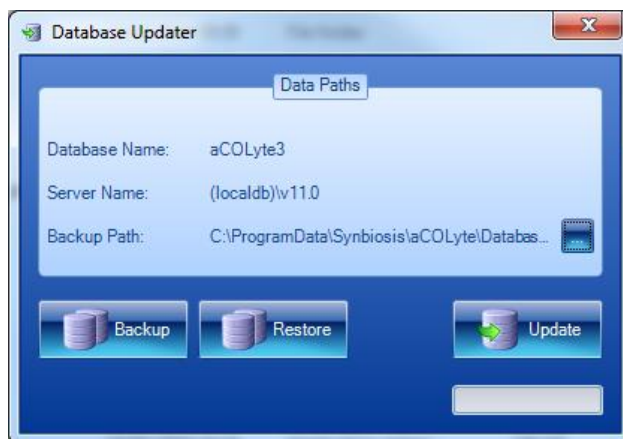
A separate Window may appear for the camera drivers, press Next.

9



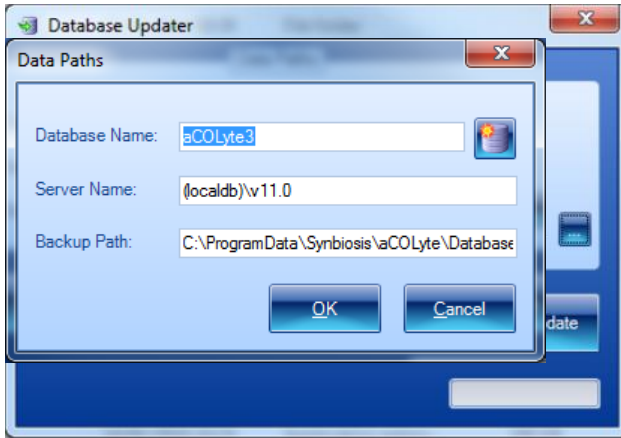
Camera Installation Complete, press Finish.

10



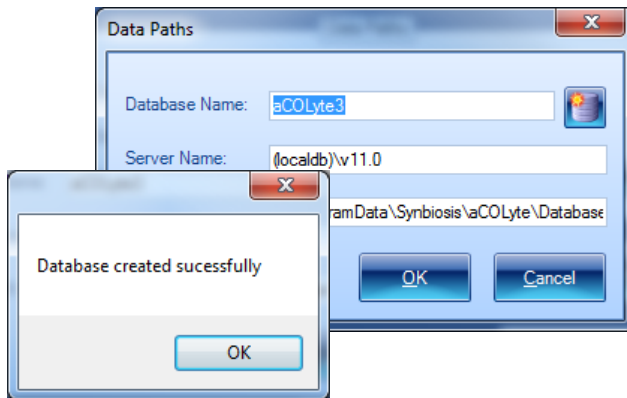
After some time the Database Updater application will appear. It will attempt to either create and update a new database or update an old database. If the Database Updater remains on display then this means the database has not been created. If this is the case please go to step 11, otherwise proceed to step 14.

11



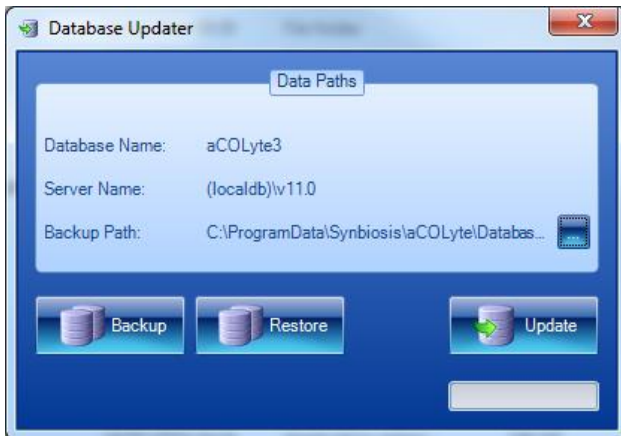
On the Database Updater Window press the blue button with three dots. The data Paths window will appear. The database name will be aCOLyte3 by default. The server name will be dependant on the type of installation you have performed but by default it would be (local) for a SQL Server Express installation and (localdb)\v11.0 for a SQL LocalDB Express installation.

12



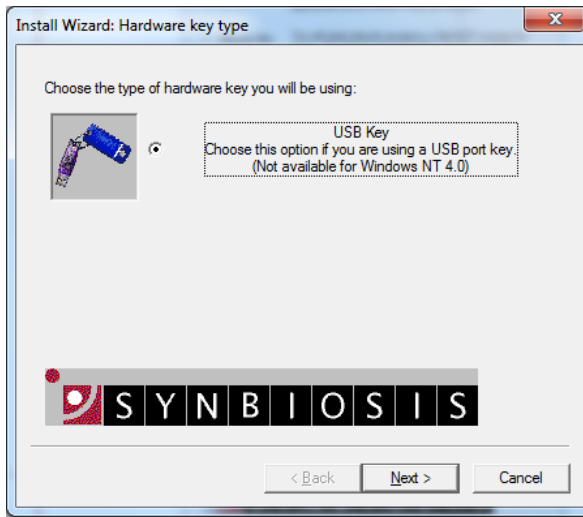
Once the details have been entered press the New Database button (on the right hand side of the Database Name). You will see a message saying "Database Successfully Created", press OK, then press OK again on the Data Paths window. If you see a message saying "There was a problem creating the database" try pressing the Create Database button a number of times as occasionally the initial connection fails.

13



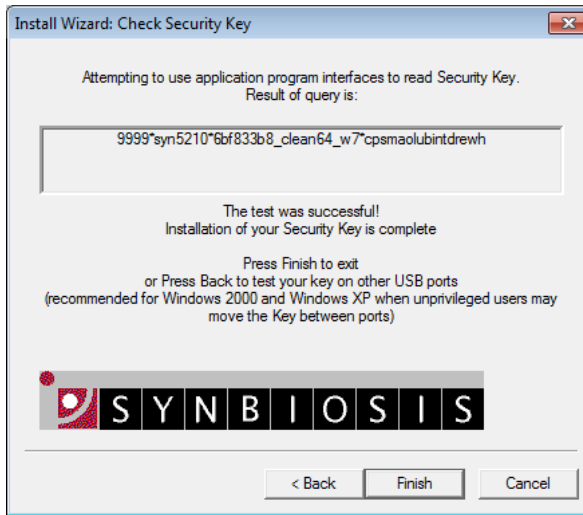
Press the Update button. If any database updates are required they will be applied and the dialog will close.

14



The aCOLyte uses a hardware key (a USB dongle) do not connect the key until instructed to by the wizard.. Follow the on-screen instructions.

15



The final page will display whether or not the USB dongle install has been successful. Press Finish.

16



The installation is now complete. Press Finish.

CONTACT SYNBIOSIS:
EUROPE:
Tel: +44 (0)1223 727125
Email: support@synbiosis.com

USA:
Tel: 800 686 4451/301 662 2863
Email: support@synbiosis.com

www.synbiosis.com
P3si0614