

FOCUS

EXCLUSIVE OFFERS & EXCITING NEW PRODUCTS

GREAT NEW OFFERS INSIDE:

iWash Slide Washing and
Drying Systems
(See page 29)

SLS Lab Pro
Recirculating Chillers
(See page 50)



See page 6...

22%
OFF

Eppendorf MiniSpin and MiniSpin Plus

Micro-centrifuges for a wide range of molecular
biology separations and quick spins

See page 13...

47%
OFF

Corning® Lambda™ Plus Starter Kit

Engineered to provide the
highest levels of accuracy,
reproducibility
and comfort



1st Feb - 31st May

2020

Brought to you by the UK's largest independent supplier of scientific products

WELCOME

FOCUS February 2020 Edition

Now firmly established as *the* promotions brochure for laboratories, FOCUS goes from strength to strength.

This edition promises great savings on a huge range of equipment, consumables and reagents. Whatever your discipline you are sure to find a product at a budget to suit your needs!

REMEMBER:

These offers are **EXCLUSIVE** to SLS and valid until 31st May 2020



SUPPLIERS



KEY to product symbols:



Length of warranty



No. years warranty can be extended



Lifetime warranty



Sustainability

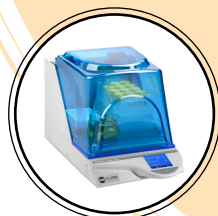
KEY Highlights



Axygen Mini Plate Spinner Centrifuge
See page 24



Gilson Pipetman Pipette Kits
See page 15



SLS Flowgen Compact Shaking Incubator
See page 47



Liebherr Mediline Refrigerators and Freezers
See page 41



Thermo Scientific MicroCL 21 Microcentrifuges
See page 25



Astell Benchtop and Compact Autoclaves
See page 48

Eppendorf Research Plus Pipettes

3 YEARS

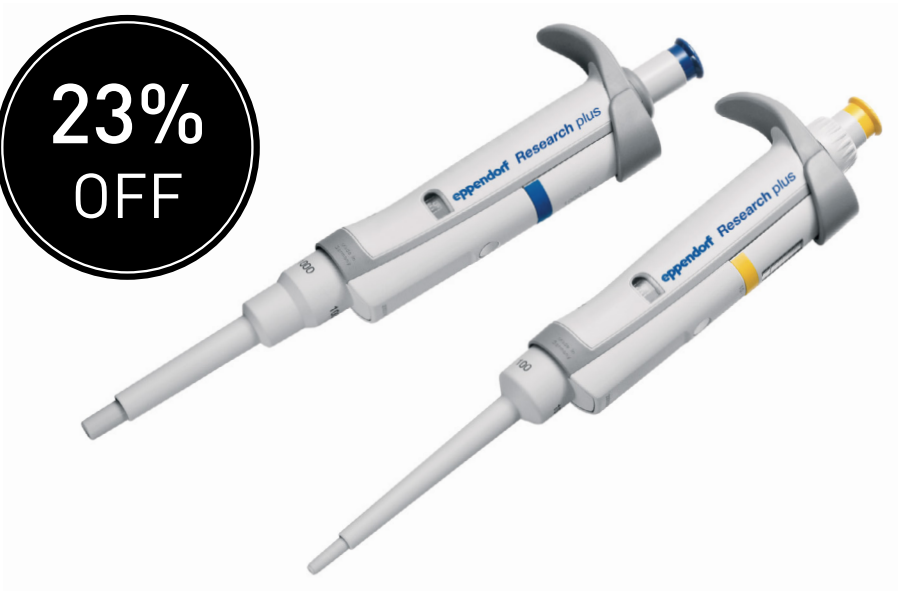
eppendorf

Eppendorf sets a new standard in pipetting.
The ultra-light Eppendorf Research® plus pipette meets the highest needs in precision and accuracy - combined with ultimate ergonomics and increased flexibility.

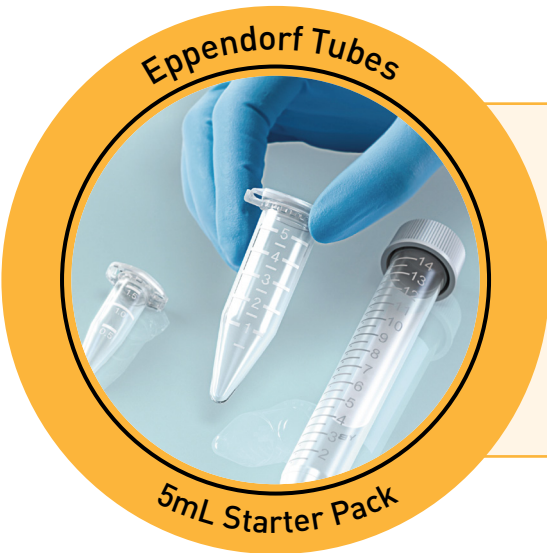
- Light weight for ease of use and comfort
- Low tip-ejection forces for stress-free workflow
- Fully autoclavable to save time



23% OFF



Code	Volume, µL	List Price, £	Offer Price, £
F13558	0.1-2.5	219.00	169.00
F13560	0.5-10	219.00	169.00
F13574	0.2-20	219.00	169.00
F13562	2-20	219.00	169.00
F13564	10-100	219.00	169.00
F13566	20-200	219.00	169.00
F13576	30-300	219.00	169.00
F13568	100-1000	219.00	169.00
F13570	500-5000	219.00	169.00
F13572	1000-10,000	219.00	169.00



5mL Eppendorf Tubes

Includes 400 PCR clean tubes, 2 tube-racks and 8 adapters for rotors with bore for 15mL conical tubes

Code	List Price, £	Offer Price, £
F13638	118.00	89.00

SPECIAL OFFER
25% OFF

Eppendorf Xplorer® and Xplorer Plus® Pipettes

1
YEAR

eppendorf

The Eppendorf Xplorer® series of electronic pipettes are designed to aspirate and dispense liquid volumes from 0.5µL to 10mL. The intuitive operating system and ergonomic design, supported by Eppendorf PhysioCare Concept®, ensure ease of operation. The Xplorer pipettes are the ideal instrument for applications that require precisely adjustable parameters, reproducible and accurate results and fatigue-free pipetting.

Xplorer®

- Function control soft keys with multi-function rocker and selection dial
- Innovative ejector
- Separate power socket with practical charging contacts
- Colour display
- Powerful battery
- Ergonomic display angle

20%
OFF



Code	Channel	Volume Range, µL	Colour Coding	Tips, µL	List Price, £	Offer Price, £
F13578	Single	0.5-10	Grey	20	505.00	399.00
F13580	Single	5-100	Yellow	200	505.00	399.00
F13582	Single	15-300	Orange	300	505.00	399.00
F13584	Single	50-1000	Blue	1000	505.00	399.00
F13586	Single	250-5000	Violet	5000	505.00	399.00
F13588	Single	500-10,000	Turquoise	10000	505.00	399.00
F13590	8	0.5-10	Medium grey	20	739.00	589.00
F13592	8	5-100	Yellow	200	739.00	589.00
F13594	8	15-300	Orange	300	739.00	589.00
F13596	8	50-1200	Green	1200	739.00	589.00
F13598	12	0.5-10	Medium grey	20	866.00	689.00
F13600	12	5-100	Yellow	200	866.00	689.00
F13602	12	15-300	Orange	300	866.00	689.00
F13604	12	50-1200	Green	1200	866.00	689.00

Xplorer Plus®

eppendorf

- Individual speed setting
- Service interval display and reminder
- History function
- Password protection
- Adjustable fixed volumes

20%
OFF



Code	Channel	Volume Range, µL	Colour Coding	Tips, µL	List Price, £	Offer Price, £
F13606	Single	0.5-10	Medium grey	20	623.00	499.00
F13608	Single	5-100	Yellow	200	623.00	499.00
F13610	Single	15-300	Orange	300	623.00	499.00
F13612	Single	50-1000	Blue	1000	623.00	499.00
F13614	Single	250-5000	Purple	5000	623.00	499.00
F13616	Single	500-10,000	Turquoise	10000	623.00	499.00
F13618	8	0.5-10	Medium grey	20	907.00	719.00
F13620	8	5-100	Yellow	200	907.00	719.00
F13622	8	15-300	Orange	300	907.00	719.00
F13624	8	50-1200	Green	1200	907.00	719.00
F13626	12	0.5-10	Medium grey	20	1066.00	849.00
F13628	12	5-100	Yellow	200	1066.00	849.00
F13630	12	15-300	Orange	300	1066.00	849.00
F13632	12	50-1200	Green	1200	1066.00	849.00

Eppendorf MiniSpin and MiniSpin Plus

2
YEARS

eppendorf

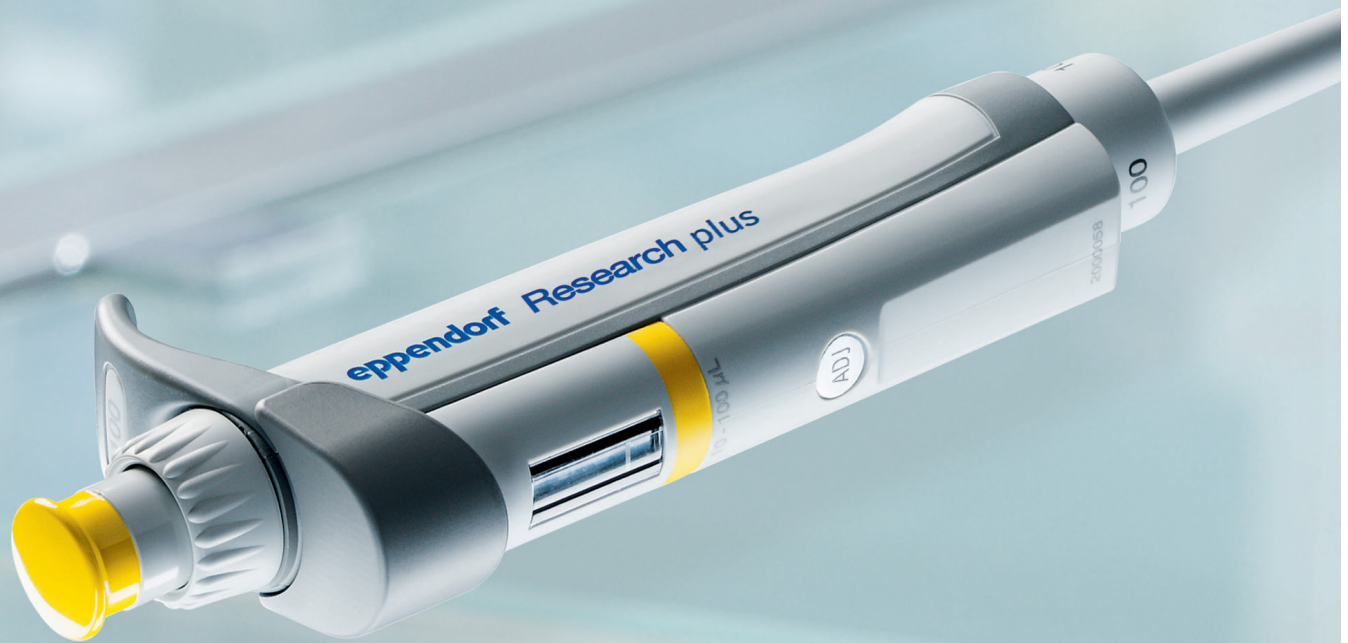
The Eppendorf MiniSpin and MiniSpin plus Micro-centrifuges allow each workstation to be equipped with a 'personal' centrifuge for a wide range of molecular biology separations and quick spins.

- Compact with a small footprint
- Includes: 12 x 1.5/2.0mL capacity rotor
- Deceleration and acceleration of <13 s
- Digital display of time and speed
- Metal rotor housing
- Air flow minimises heating
- Lid automatically opens at the end of the run

22%
OFF



Code	Description	Max. Speed RPM/RCF, xg	List Price, £	Offer Price, £
F13634	MiniSpin	13,400/12,100	821.00	639.00
F13636	MiniSpin Plus	14,500/14,100	1067.00	819.00



Raise the Limits

Eppendorf Research® plus

Eppendorf sets standards in ergonomics! This ultralight pipette meets the highest needs in precision and accuracy – combined with ultimate ergonomics and increased flexibility.

A spring-loaded tip cone, a secondary adjustment option, an improved volume display – and all that in an ultra light, fully autoclavable pipette.

- > Ideal ergonomics:
Eppendorf PhysioCare Concept®
- > Ultra light with minimal pipetting and ejection forces
- > Spring-loaded tip cone
- > Available as single-channel pipette with fixed and variable volume as well as 8-, 12-, 16- and 24-channel pipette



www.scientificlabs.co.uk

SHIELDskin Gloves with twinSHIELD™ Technology



- Dual-layered (nitrile and polychloroprene)
- Powder-free
- Orange gloves are accelerator-free
- Virus and micro-organism resistant
- Non-sterile



F13426
General Risk

F13446
Chemical Risk

F13436
Biological Risk

ecoSHIELD Green Nitrile Gloves (62 512)

Supplied in packs of 150

Code	Description	List Price, £	Offer Price, £
F13426	XS	17.30	7.00
F13428	S	17.30	7.00
F13430	M	17.30	7.00
F13432	L	17.30	7.00
F13434	XL	17.30	7.00

SHIELDskin Orange Nitrile 260 Gloves (67 623)

Supplied in packs of 90

Code	Description	List Price, £	Offer Price, £
F13436	XS	26.20	8.50
F13438	S	26.20	8.50
F13440	M	26.20	8.50
F13442	L	26.20	8.50
F13444	XL	26.20	8.50

SHIELDskin Chem Red Neo Nitrile 300 Gloves (66 925)

Supplied in packs of 40

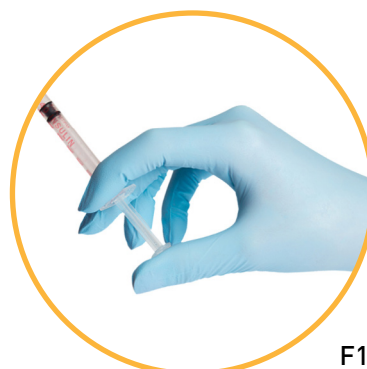
Code	Description	List Price, £	Offer Price, £
F13446	XS	36.60	14.00
F13448	S	36.60	14.00
F13450	M	36.60	14.00
F13456	L	36.60	14.00
F13458	XL	36.60	14.00
F13460	XXL	36.60	14.00

duoSHIELD Ice Nitrile 240 Gloves (65 5125)

- Medical exam glove, powder-free
- Class 1 MDD glove (Council Directive 93/42/EEC)
- 240mm/0.11mm (EN 455-2:2015)
- Micro-organism resistant - AQL <1.5 (EN 374 2:2014 Level 2 and EN 455-1:2000)
- Virus resistant (ISO 16604:2004 Procedure B)
- Tested for chemical permeation - Type B KPT according to ISO 374-1:2016+A1:2018
- Type I hypersensitivity eliminated - Type IV hypersensitivity reduced

Supplied in packs of 100

Code	Description	List Price, £	Offer Price, £
F13462	XS	14.90	6.00
F13464	S	14.90	6.00
F13466	M	14.90	6.00
F13468	L	14.90	6.00
F13470	XL	14.90	6.00



F13462

GLOVE CHEMICAL RESISTANCE GUIDE

Being compliant with the standards does not guarantee absolute protection because what is tested relates to the materials used, methods of manufacture, length and thickness of the glove, etc. In the table below you'll see the performance for three of our synthetic gloves based on EN 16523-1:2015+A1:2018. On paper they all comply with the same standards, but as you will notice they do not offer the same level of performance.

Green
General
risk

Orange
Biological
risk

Red
Chemical
risk

THE THICKER AND LONGER THE GLOVE. THE BETTER YOU WILL BE PROTECTED !

Chemical name	CAS n°	Concentration	SHIELDskin CHEM™ NEO NITRILE™ 300	SHIELDskin™ ORANGE NITRILE™ 260	ecoSHIELD™ Eco Nitro PF 250
Thickness (Palm)			0.31 mm	0.14 mm	0.10 mm
Sodium acetate Sat. solution	127-09-3	100%	480 min	480 min	480 min
Acetic Acid	64-19-7	100%	90 min	7 min	4 min
Hydrochloric Acid	7647-01-0	37%	480 min	130 min	98 min
Formic Acid	64-18-6	98-100%	125 min	4 min	3 min
Acrylamide	79-06-1	40%	480 min	480 min	480 min
Secondary isoamyl alcohol 98%	598-75-4	98%	480 min	55 min	30 min
Ethidium Bromide	1239-45	5%	480 min	480 min	480 min
Chloroform	67-66-3	99.8%	4 min	0 min	0 min
Dimethyl Formamide (DMF)	68-12-2	99%	9 min	4 min	1 min
Dimethyl Sulfoxide (DMSO)	67-68-5	99%	179 min	48 min	10 min
Ethanol	64-17-5	100%	154 min	20 min	9 min
Formaldehyde	50-0-07	37%	480 min	480 min	480 min
Formamide	75-12-7	99%	123 min	97 min	9 min
Isobutanol	78-83-1	99%	480 min	76 min	39 min
Isopropanol	67-63-0	100%	480 min	46 min	33 min
Methanol	67-56-1	99.9%	36 min	5 min	0 min
Phenol	108-95-2	50%	163 min	23 min	15 min
Sodium Hydroxide	1310-73-2	50%	480 min	480 min	480 min
Tris (hydroxymethyl) aminomethane Sat. solution	77-86-1	100%	480 min	480 min	480 min
Xylene	1330-20-7	98.5%	8 min	4 min	2 min

DISCLAIMER: The data provided was based on gloves tested under laboratory conditions, in accordance with EN 16523-1:2015+A1:2018. The information is for guidance only and may not reflect the user's application. A risk assessment should always be made by purchaser to assess the suitability of gloves for a specific application.



twinSHIELD™ technology

- Double-layered = reduced risk of pinholes.
- Stronger = better protection.
- 2 colours : red, orange or green exterior to make it easier to select according to the risk and a soft and comfortable white interior.

EN EN 16523-1:2015+A1:2018
(supersedes EN 374-3:2003)

- Breakthrough occurs when a permeation rate of $1\mu\text{g}/\text{cm}^2/\text{min}$ is noted.
- The test temperature is 23°C ($\pm 1^\circ\text{C}$).
- Test results must be within 20% of the mean average of the three glove samples tested. The lowest score is reported.

PPE CAT. III

SLS Lab Pro Low Retention Racked Sterile Filtered Tips

Low retention polymer designed to increase pipetting accuracy by virtually eliminating sample retention. These tips deliver volumes within 0.1% of the indicated volume, versus 0.7% for standard polymer tips thereby providing more accurate results.



30%
less plastic

Over
***50%
OFF**



Please visit the News page on our website for details of our **WASTE 2 ENERGY** scheme



**WASTE
2 ENERGY**



***Offer prices are valid when you purchase 3 packs or more**

Code	Description	Pack	List Price, £	*Offer Price, £
F13332	10µL	10 x 96	74.00	32.00
F13334	10XL	10 x 96	74.00	32.00
F13336	20µL	10 x 96	74.00	32.00
F13338	100µL	10 x 96	74.00	32.00
F13340	200µL	10 x 96	74.00	32.00
F13342	300µL	10 x 96	74.00	32.00
F13344	1000µL	8 x 96	74.00	32.00
F13346	1250µL	8 x 96	74.00	32.00

SLS Lab Pro Reload Pipette Tips



SLS Lab Pro Reloads provide a low cost, environmentally friendly alternative to racked tips. The system allows you to reload your empty racks with new tips in a single movement. The transfer card is designed to prevent contamination by minimising the amount of handling.

- Reload up to 10 trays in 90 seconds
- Reuse existing racks
- Requires 57% less storage space than full racks
- Generates 90% less packaging waste



Remove snapcard from your empty rack. Tear the strip at the top of the bag and remove protective cover (extra lid).



Transfer a new card to the empty rack. You will hear a click when the snapcard is secured.



Replace the extra lid in the bag to protect your unused snapcards. At the bottom of the bag is an extra rack.



Seal bag for later use.

Code	Description	Pack	List Price, £	Offer Price, £
F13348	10µL	10 x 96	33.36	15.50
F13350	10XL	10 x 96	31.84	16.00
F13352	200µL	10 x 96	31.84	14.00
F13354	1000µL	10 x 96	34.56	17.95
F13356	Empty rack for 10 to 300µL tips	Each	3.50	-
F13358	Empty rack for 1000 or 1250µL tips	8	47.60	-

SLS Lab Basics Single Channel Pipettes

3 YEARS

- Ergonomic design ensuring light weight & soft plunger movement
- Click-stop system for volume selection
- Colour coded for easy identification
- Calibration conforms to EN-ISO 8655 standards ensuring high accuracy & precision
- Calibration report enclosed with every pipette

Up to
62% OFF



Code	Volume Range, μL	Increment, μL	Compatible Lab Pro Tips	List Price, £	Offer Price, £
F13360	0.1-2.5	0.01	10 μL /10XL	115.00	46.00
F13362	0.5-10	0.1	10 μL /10XL	115.00	46.00
F13364	2-20	0.1	10XL	115.00	46.00
F13366	5-50	0.5	20 μL /100 μL	115.00	46.00
F13368	10-100	0.5	100 μL /200 μL	115.00	46.00
F13370	20-200	1	200 μL /300 μL	110.00	46.00
F13372	100-1000	5	1000 μL /1250 μL	115.00	46.00
F13374	500-5000	50	-	138.00	52.00
F13376	1000-10000	100	-	138.00	52.00

SLS Lab Basics Multi Channel Pipettes

3 YEARS

- Smooth and light tip loading and ejection
- Leak free sealing of tips
- Manifold can rotate 360° for easy right or left hand operation
- Easily removable & fully autoclavable manifold

Up to
68% OFF



Code	Channel	Volume Range, μL	Compatible Lab Pro Tips	List Price, £	Offer Price, £
F13378	8	0.5 - 10	10 μL /10XL	505.00	160.00
F13380	8	5 - 50	20 μL /100 μL	505.00	160.00
F13382	8	10 - 100	100 μL /200 μL	505.00	160.00
F13384	8	20 - 200	200 μL /300 μL	505.00	160.00
F13386	8	30 - 300	200 μL /300 μL	505.00	160.00
F13388	12	0.5 - 10	10 μL /10XL	642.00	225.00
F13390	12	5 - 50	20 μL /100 μL	642.00	225.00
F13392	12	10 - 100	100 μL /200 μL	642.00	225.00
F13394	12	20 - 200	200 μL /300 μL	642.00	225.00
F13396	12	30 - 300	200 μL /300 μL	642.00	225.00

Corning® Lambda™ Plus Starter Kit 3 YEARS

CORNING

Engineered to provide the highest levels of accuracy, reproducibility, and comfort. Features smooth plunger movement and extremely low pipetting forces. A locking mechanism prevents accidental change to the volume setting. Designed to maintain their calibration, even after repeated use and autoclaving. A key is included with each pipette for easy in-house calibration.

- Factory calibrated to strict ISO 8655 standards
- Fully autoclavable and UV resistant
- Designed for universal fit with all common brands of pipette tips
- Adjustable tip ejector

Supplied with: 4 x single-channel pipettor - 0.5 to 10µL/2 to 20µL/20 to 200µL/100 to 1000µL, universal carousel rack for six single-channel pipettes, Corning DeckWorks™ pipette tips: 10µL, 200µL, 1000µL.



**47%
OFF**

Code	List Price, £	Offer Price, £
F13018	645.00	342.00

Lonza SeaKem LE Agarose



Special Offer

Lonza SeaKem LE Agarose 500g

Code	List Price, £	Offer Price, £
F13530	390.00	234.00

**40%
OFF**

Sartorius Proline Plus Multipacks 2 YEARS



The Proline Plus pipette family from Sartorius offers a robust design and is suitable for every day laboratory applications.



- Reduced pipetting forces help prevent RSI
- Accurate and precise performance
- Contamination free pipetting with Safe-Cone filters
- Robust design and easy to maintain
- Fully autoclavable

Code	Description	Contains	List Price, £	Offer Price, £
F13256	Proline Plus 3 - pack 20	3 x single channel pipettes (2-20 / 20-200 / 100-1000µL); 2 x tip racks - 96 tips (0.5-200 / 10-1000µL); linear stand; 3 x pipette holders	441.00	289.00
F13258	Proline Plus 4 - pack 20	4 x single channel pipettes (0.5-10 / 2-20 / 20-200 / 100-1000µL); 3 x tip racks - 96 tips (0.1-10 / 0.5-200 / 10-1000µL); linear stand; 4 x pipette holders	575.00	374.00
F13260	Proline Plus 4 - pack 100	4 x single channel pipettes (0.5-10 / 10-100 / 20-200 / 100-1000µL); 3 x tip racks - 96 tips (0.1-10 / 0.5-200 / 10-1000µL); linear stand; 4 x pipette holders	575.00	374.00
F13262	Proline Plus 5 - pack 10	5 x single channel pipettes (0.5-10 / 10-100 / 20-200 / 100-1000 / 500-5000µL); 2 x tip racks - 96 tips (0.5-200 / 10-1000µL); 1x tip rack - 100 tips (5000µL); linear stand; 5 x pipette holders	715.00	465.00
F13264	Proline Plus 5 - pack 20	5 x single channel pipettes (2-20 / 10-100 / 20-200 / 100-1000 / 500-5000µL); 2 x tip racks - 96 tips (0.5-200 / 10-1000µL); 1x tip rack - 100 tips (5000µL); linear stand; 5 x pipette holders	715.00	465.00
F13266	Proline Plus 3+1 - pack	3 x single channel pipettes (0.5-10 / 20-200 / 100-1000µL); 1 x 8 channel pipette (30-300µL); 4 x tip racks - 96 tips (0.1-10 / 0.5-200 / 5-350 / 10-1000µL); linear stand; 4 x pipette holders	798.00	519.00
F13268	Proline Plus 3 - pack Max	3 x single channel pipettes (100-1000 / 500-5000 / 1000-10,000µL); 1 x tip racks - 96 tips (10-1000µL); 2 x bulk in a bag tips (100 x 0.1-5mL / 250 x 1-10mL); linear stand; 3 x pipette holders	441.00	287.00

Gilson Pipetman® Pipette Kits L



- Starter Kits: (P20, P200 and P1000)
- Large Volume Kits: (P5000 and P10mL)
- Micro Volume Kits: (P2, P10 and P100)
- 4 Pipette Kits: (P2, P20, P200, and P1000)



Pipetman Classic

Pipetman Classic: a range of robust, accurate and precise pipettes.

Code	Pipette Style	Kit	List Price, £	Offer Price, £
F13250	Pipetman Classic	Starter Kit	540.00	351.00
F13252	Pipetman Classic	Large Volume Kit	360.00	234.00
F13254	Pipetman Classic	Micro Volume Kit	540.00	351.00
F13194	Pipetman Classic	4 Pipette Kit	700.00	455.00

Pipetman G

Pipetman G: offers the lowest pipetting forces in the market.

Code	Pipette Style	Kit	List Price, £	Offer Price, £
F13244	Pipetman G	Starter Kit	570.00	371.00
F13246	Pipetman G	Micro Volume Kit	570.00	371.00
F13192	Pipetman G	4 Pipette Kit	740.00	481.00
F13248	Pipetman G	Large Volume Kit	380.00	247.00

Pipetman L

Pipetman L: a lightweight pipette with a newly designed handle that fits naturally in your hand.

Code	Pipette Style	Kit	List Price, £	Offer Price, £
F13240	Pipetman L	Starter Kit	631.00	410.00
F13242	Pipetman L	Micro Volume Kit	631.00	410.00
F13190	Pipetman L	4 Pipette Kit	821.00	534.00

Gilson Pipetman® L Pipettes L



The large arched hook reduces tensions while holding the pipette and the thumb is positioned closer to the push button thus reducing overall pipetting forces. Featuring a patented volume locking system for safe, secure pipetting.

- Adjustable tip ejector button to adapt to both right- and left-handed users, excluding multichannel, 5mL and 10mL pipettes
- Clip mechanism allows easy and safe removal of tip ejector
- Lowest pipetting forces on the market give increased comfort even when pipetting for long periods
- GLP features include 2-D barcode for traceability

**40%
OFF**



Code	Description	Volume, µL	Ejector	List Price, £	Offer Price, £
F13196	Pipetman L P2L	0.2-2	Metal	228.00	137.00
F13198	Pipetman L P10L	1-10	Metal	228.00	137.00
F13200	Pipetman L P20L	2-20	Metal	228.00	137.00
F13202	Pipetman L P100L	10-100	Metal	228.00	137.00
F13204	Pipetman L P200L	20-200	Metal	228.00	137.00
F13206	Pipetman L P1000L	100-1000	Metal	228.00	137.00
F13208	Pipetman L P2L	0.2-2	Plastic	228.00	137.00
F13210	Pipetman L P10L	1-10	Plastic	228.00	137.00
F13212	Pipetman L P20L	2-20	Plastic	228.00	137.00
F13214	Pipetman L P100L	10-100	Plastic	228.00	137.00
F13216	Pipetman L P200L	20-200	Plastic	228.00	137.00
F13218	Pipetman L P1000L	100-1000	Plastic	228.00	137.00
F13220	Pipetman L P5000L	500-5000	-	228.00	137.00
F13222	Pipetman L P10mL	1000-10,000	-	228.00	137.00

SLS Select Alcohol Wipes



200 x 200mm

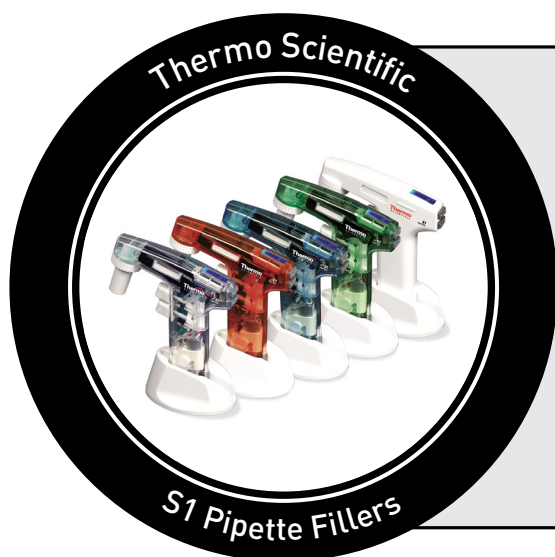
SLS Select Alcohol Wipes 200 x 200mm

200 wipes per tub

Code	List Price, £	Offer Price, £
F13536	12.00	3.60

SPECIAL OFFER

**70%
OFF**



Thermo Scientific S1 Pipette Fillers

2
YEARS

SPECIAL OFFER

45%
OFF

Code	Colour	List Price, £	Offer Price, £
F13134	White	539.00	296.00
F13136	Clear	539.00	296.00
F13138	Blue	539.00	296.00
F13140	Red	539.00	296.00
F13142	Green	539.00	296.00

Gilson Pipetman® G Pipettes L

Pipetman® G offers the lowest pipetting forces in the market.

- Extremely low pipetting forces
- Extensive range covers volume requirements from 0.2µL up to 10mL

40%
OFF

GILSON®



Code	Description	Volume, µL	Ejector	List Price, £	Offer Price, £
F13224	Pipetman G P2G	0.2-2.0	Metal	209.00	125.00
F13226	Pipetman G P10G	0.5-10	Metal	209.00	125.00
F13228	Pipetman G P20G	2-20	Metal	209.00	125.00
F13230	Pipetman G P100G	10-100	Metal	209.00	125.00
F13232	Pipetman G P200G	20-200	Metal	209.00	125.00
F13234	Pipetman G P1000G	100-1000	Metal	209.00	125.00
F13236	Pipetman G P5000G	500-5000	-	209.00	125.00
F13238	Pipetman G P10mLG	1000-10,000	-	209.00	125.00

Sartorius Picus Electronic Pipettes

2 YEARS



Small, light and ergonomic design ensures comfort of use and helps avoid RSI. Incorporates an electronic brake and piston control system for accurate and precise pipetting results, whilst an intuitive user interface with an adjustment wheel ensures fast volume setting and easy menu navigation.

- Electronic tip ejection
- Built in plate tracker functionality guides pipetting steps for improved microplate work
- Lightweight, 100g
- Optiload ensures tip loading with a constant and equal force for perfect sealing
- Hot key access for up to 10 saved programmes



Code	Channels	Volume Range, μL	List Price, £	Offer Price, £
F13270	Single	0.2 - 10	543.00	407.00
F13272	Single	5 - 120	543.00	407.00
F13274	Single	10 - 300	543.00	407.00
F13276	Single	50 - 1000	543.00	407.00
F13278	Single	100 - 5000	543.00	407.00
F13280	Single	500 - 10,000	543.00	407.00
F13282	8	0.2 - 10	838.00	629.00
F13284	8	5 - 120	838.00	629.00
F13286	8	10 - 300	838.00	629.00
F13288	8	50 - 1200	838.00	629.00
F13290	12	0.2 - 10	1003.00	752.00
F13292	12	5 - 120	1003.00	752.00
F13294	12	10 - 300	1003.00	752.00
F13296	12	50 - 1200	1003.00	752.00

SLS Select Serological Pipettes



Manufactured in compliance with the current versions of the ISO 13485 and FDA CFR 21 Part 820, cGMP.

- Made from USP Class VI polystyrene resin
- Crisp, dark ascending and descending as well as negative graduations
- Colour-coded rings for easy identification
- Plugged
- Sterile, non-pyrogenic, RNase-/DNase-free



**60%
OFF**

Code	Volume, mL	Individually Wrapped	Inner Pack	Pack	List Price, £	Offer Price, £
F13298	1	Yes	100	1000	143.00	57.00
F13300	1	No	25	1000	118.00	47.20
F13302	2	Yes	100	1000	157.00	63.00
F13304	2	No	25	1000	118.00	47.20
F13306	5	No	25	500	112.00	44.80
F13308	5	Yes	50	200	43.00	17.20
F13310	10	Yes	50	200	45.00	18.00
F13312	10	No	25	500	137.00	55.00
F13314	25	No	20	200	162.00	65.00
F13316	25	Yes	50	200	103.00	41.20
F13318	50	Yes	20	100	126.00	50.00

Corning Stripettor Ultra



Special Offer

Corning Stripettor Ultra

Code	List Price, £	Offer Price, £
F13012	263.00	140.00

Over
**45%
OFF**

SLS Lab Pro A - Series Analytical Balance

5 YEARS



The breeze break has rotary sliding doors that slide behind the balance and can be removed with one touch. This feature, combined with the small footprint, make the balances ideal for applications where space is at a premium.

- Automatic internal calibration
- Reverse backlit LCD display for easy to read weighing results
- Statistical calculation function eliminates the need for a stats printer
- Standard RS-232C
- Fast compact SHS sensor, response time ~ 2 seconds

40% OFF



Code	Capacity, g	Readability, mg	List Price, £	Offer Price, £
F13320	102	0.1	970.00	582.00
F13322	252	0.1	1025.00	615.00

Simax Media Bottles

SIMAX®

Made from heat resistant borosilicate 3.3 glass in accordance with ISO 3585 and conforming to ISO 4796-1. Complete with blue plastic cap and pouring ring resistant to 140°C. GL 45 thread. Autoclavable.



Code	Capacity, mL	Pack	List Price, £	Offer Price, £
F13472	100	10	19.00	13.30
F13474	250	10	21.90	15.30
F13476	500	10	26.60	18.60
F13478	1000	10	43.50	30.50
F13480	2000	10	91.00	64.00
F13482	5000	Each	71.00	49.70

30% OFF

Stuart SSM1 Mini Orbital Shaker

3 YEARS

- Smooth orbital shaking action
- Built-in digital timer
- Supplied with non-slip mat
- Can be used in incubators up to 40°C and 80% humidity
- 220 x 220mm platform will hold up to 4 x 250mL or 2 x 500mL or 1 x 1000mL Erlenmeyer flasks or bottles
- Speed range: 30 to 300 RPM
- Orbit diameter: 16mm
- Dims, w x d x h, mm
240 x 300 x 140

Stuart SSL1 Orbital Shaker with Platform

3 YEARS

The SSL1 orbital shaker is a quiet, vibration-free unit which operates between 30 and 300 RPM. The unit features electronic feedback speed control with a 16mm orbit. Supplied complete with a cradle type platform with four rubber cushioned horizontal securing bars with quick release handles. They can be easily adjusted both vertically and horizontally to hold most types of vessel, including 12 x 250mL, 9 x 500mL, 6 x 1L or 2 x 2L flasks.

- Platform dimensions are 335mm x 335mm
- Dims, w x d x h, mm: 360 x 420 x 270



SSM1 Mini Orbital Shaker

Code	Description	List Price, £	Offer Price, £
F13170	Mini orbital shaker SSM1 digital	751.00	526.00
F13172	Cradle platform with 4 securing tension bars	165.00	116.00
F13174	Large platform 340 x 300mm holds 8 plates	97.00	68.00

SSL1 Orbital Shaker with Platform

Code	Description	List Price, £	Offer Price, £
F13176	SSL1 orbital shaker with platform	1295.00	907.00
F13178	Large platform 510 x 510mm with six rubber securing bars	400.00	280.00
F13180	Large flat platform 350 x 350mm no cradle	102.00	71.00

Stuart Roller Mixers 3 YEARS

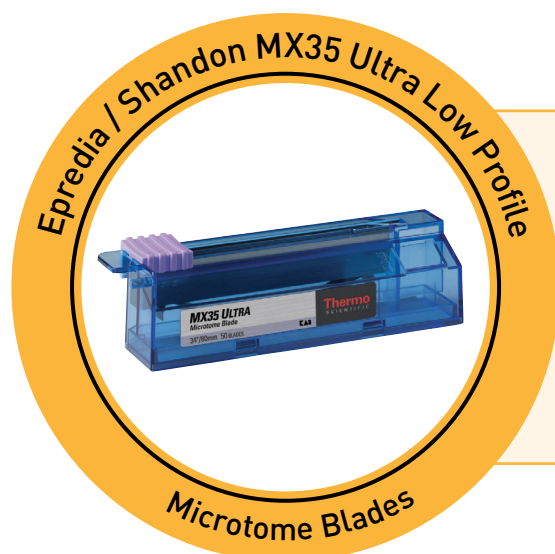


These roller mixers provide a gentle, but highly efficient, rocking and rolling action.

- A choice of analogue or digital control
- A choice of six or nine rollers
- A choice of fixed or variable speed
- Detachable roller tubes to accommodate larger vessels
- Removable side panels ensure bottles do not slide off mixer



Code	Alt Ref	Rollers	Control	Speed	Dims, w x d x h, mm	List Price, £	Offer Price, £
F13150	SRT6	6	Analogue	Fixed (33 RPM)	565 x 240 x 110	647.00	453.00
F13152	SRT9	9	Analogue	Fixed (33 RPM)	565 x 360 x 110	786.00	550.00
F13154	SRT6D	6	Digital	Variable (5 to 60 RPM)	565 x 240 x 110	853.00	597.00
F13156	SRT9D	9	Digital	Variable (5 to 60 RPM)	565 x 360 x 110	989.00	692.00



MX35 Ultra Low Profile Microtome Blades

Supplied in packs of 50

Code	List Price, £	Offer Price, £
F13506	74.00	52.00

SPECIAL OFFER

**30%
OFF**



Corning Mini Microcentrifuge

Fixed speed of 6,000RPM (2,000 x g).
8 x 1.5/2.0mL rotor and 4-place strip
tube rotors included.

Code	List Price, £	Offer Price, £
F13010	189.00	141.00

**25%
OFF**

SLS Lab Basics Mini-Centrifuge

2
YEARS



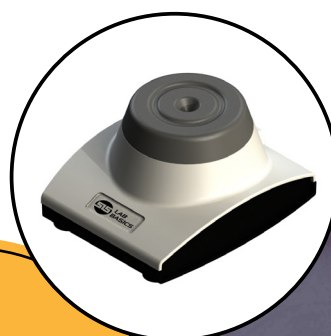
**[Get a FREE Mini Vortex Mixer
with this purchase]**

Mini-Centrifuge:

- Maximum speed 7000 RPM/2680 x g
- Supplied with an 8 place 1.5/2.0mL microtube rotor and 16 place (2 x 8 strips) PCR rotor
- Whisper quiet operation
- Ideal for quick spin downs of microtubes and PCR tubes

Mini Vortex Mixer:

- 4500 RPM rapid mixing action
- Simple touch operation
- Robust ABS construction with non-slip feet



**FREE
Vortex
Mixer**

**Worth
£131**



Code	Description	List Price, £	Offer Price, £
F13406	SLS Lab Basics mini-centrifuge and vortex mixer bundle	329.00	198.00

Axygen Mini Plate Spinner Centrifuge

2 YEARS



The Axyspin Plate Spinner is the first centrifuge designed specifically for quick and easy centrifugation of samples in PCR plates or microplates.

- Capacity for two standard plates
- Top loading design
- Exceptionally small footprint
- Starts and stops in seconds
- Use before and after thermal cycling to improve PCR yield
- Quickly spin down droplets and condensation
- Accepts skirted and non-skirted and all standard PCR plates
- Less than 1/4 the size of most plate centrifuges
- Maximum capacity: 2 standard PCR or microtiter microplates
- Speed: 2500 RPM

40% OFF



Code	Description	List Price, £	Offer Price, £
F13014	Mini Plate Spinner Centrifuge	551.00	331.00

Axyspin Refrigerated Microcentrifuge



Powerful yet silent brushless drive technology. Starting from room temperature, the chamber cools to 4°C in just 8 minutes. The control panel features a back-lit LCD, while the large control knob facilitates digital setting of rotor speed, run time and temperature.

- Speed range 500 to 13,500RPM
- Maximum RCF 17,135 x g
- Maximum capacity 24 x 1.5/2.0mL
- Temperature range -10 to 40°C
- 24 x 1.5/2.0mL aluminum rotor included

Over 50% OFF



Code	Description	List Price, £	Offer Price, £
F13640	Refrigerated Microcentrifuge	4250.00	2040.00

Thermo Scientific MicroCL 21 Microcentrifuges

Thermo
SCIENTIFIC

The Thermo Scientific MicroCL 21 microcentrifuges are compact, easy-to-use and available in both ventilated and refrigerated models. With intuitive controls and the innovative ClickSeal biocontainment lid, they are ideal for micro-volume protocols such as nucleic acid or protein lysate preparation and PCR reaction set-up.

- Max speed: 14,800RPM or 21,100 x g
- Refrigerated version can cool in just nine minutes, temp range -9 to +40°C at 1°C increments
- ClickSeal® biocontainment rotor lid clicks in place for secure containment
- Standard rotor runs 24 tubes in a single row – 1.5 to 2mL tubes and mini prep/spin columns

**40%
OFF**



Code	Description	List Price, £	Offer Price, £
F13550	MicroCL 21 with 24 x 1.5/2.0mL rotor and ClickSeal biocontainment lid	2325.00	1395.00
F13552	MicroCL 21R Refrigerated with 24 x 1.5/2.0mL rotor with ClickSeal biocontainment lid	4953.00	2972.00
F13554	10 x 5mL rotor with ClickSeal biocontainment lid	539.00	323.00

Thermo Scientific SL8R Refrigerated Centrifuge Cell Culture Package

2
YEARS

Thermo
SCIENTIFIC

The SL 8R is a high capacity refrigerated centrifuge with a compact footprint and smart, simple interface.

- Auto-Lock™ rotor exchange and ClickSeal™ biocontainment lids
- Max speed: 17,850RPM or 30,279 x g
- Temperature range: -10 to +40°C
- High capacity - 8 x 50mL conical tubes, 24 x 5/7mL blood tubes, 4 microplates or 48 microtubes
- One-touch operation with pre-saved protocols and password protection
- Optional indicators at end of run, including automatic lid opening, flashing display or audible signal



Cell Culture Package includes:

TX-150 rotor, set of 4 TX-150 buckets, set of 4 TX-150 ClickSeal biocontainment lids, 4 x 50mL conical adapters and 8 x 15mL conical adapters

40%
OFF

Code	Description	List Price, £	Offer Price, £
F13556	SL8R Centrifuge Cell Culture Package	7712.00	4627.00

Branson SFX Sonifiers

BRANSON

SFX150 Sonifiers 3 YEARS

The SFX150 Sonifier® cell disruptor and homogeniser includes a handheld converter designed for ergonomic comfort and easy control to simplify and speed up your experiment.

- Ergonomic handheld converter with contoured grip and LED indicator
- Quiet operation at 40 kHz
- Continuous or pulsed ultrasonic
- Time and energy modes with energy pulsing
- Experiment progress indicator
- Micro Tip mode, which limits amplitude to 70%
- 150 watts output power
- Processing up to 150mL

20% OFF



Code	Description	List Price, £	Offer Price, £
F13486	Sonifier SFX150 with handheld converter and 1/8" microtip	3589.00	2871.00
F13484	Sonifier SFX150 with traditional converter and 1/8" microtip	3354.00	2683.00

Delivery not included



National Diagnostics Histology Clearing Agent 1 US Gallon

SPECIAL OFFER
40% OFF

Code	Description	List Price, £	Offer Price, £
F13532	Histo-Clear	117.00	70.00
F13534	Histo-Clear II	80.00	48.00

The SFX550 can process larger, viscous samples, but also provides precise control over energy output and other parameters to accommodate experiments of all sizes.

- Energy mode and energy pulsing are now available in addition to the traditional timed experiment
- Check on the progress of your experiment and view key variables such as power level, energy usage, sample temperature and more
- Continuous or pulsed ultrasonics
- Micro-Tip mode, which limits amplitude to 70%
- 550 watts output power
- Processing up to 1000mL

20% OFF



Code	Description	List Price, £	Offer Price, £
F13488	SFX550 sonifier kit - with model 102-C converter, cable, disruptor 1/2" horn, 2x spanner wrench and open-end wrench for micro-tip or flat-tip	4759.00	3807.00
F13490	SFX550 sonifier kit - with model 102-C converter, cable, 3/4" horn, 2x spanner wrench	4949.00	3959.00

Delivery not included

Accessories

Code	Description	List Price, £	Offer Price, £
F13492	Stand with rod for SFX150 SFX250 SFX550	79.00	71.00
F13500	Adapter for sound-proof enclosure for converter SFX150	111.00	100.00
F13494	Continuous flow glass rosette cooling cell	722.00	650.00
F13496	Temperature probe for digital SFX	387.00	348.00
F13498	Sound-proof enclosure (requires an adaptor for SFX150)	915.00	824.00
F13502	Converter clamp for SFX150	99.00	89.00
F13504	Converter clamp for SFX250 or SFX550	99.00	89.00

Accessories

10% OFF

iWash Slide Washing and Drying Systems

Introducing the world's first compact Slide Cleaner to wash and recycle image based automated cell counter slides in less than 30 seconds. The iWash Slide Cleaner is safer, quicker and more efficient for washing disposable slides than manually washing re-useable slides while helping you meet sustainability targets.

- Reduces the amount of bio hazardous plastic waste produced by single use slides
- Increases sustainability, helps reduce CO₂ emission produced by manufacturing and disposal of slides
- Unique direct injection technology allows rapid and efficient cleaning of the disposable slides
- Disposable slides are cleaned in a sealed system so no risk of exposure to biohazards
- Comes pre-programmed with carefully developed optimum washing methods
- Supplied with wash fluid concentrate and silicone defoamer



Code	Description	List Price, £
WAS1080	iWash for Countess II slides	2995.00
WAS1084	iWash for Luna II slides	2995.00
WAS1086	iWash for TC20 slides	2995.00
WAS1088	iWash for Olympus R1 slides	2995.00

Motic Panthera E Microscopes



The Panthera E is equipped with SC Plan Achromatic Infinity optics. These objectives combined with N-WF widefield eyepieces with a 20mm field of view deliver unmatched image quality and definition. The Panthera E stand features a reversed 4-fold nosepiece and is equipped with a rackless stage. Illumination is provided by an LED light source in a Fixed Koehler setup.

These microscopes are supplied with 4X, 10X, 40X objectives. The 4th position 100X objective is available to purchase as an optional extra.

**SPECIAL
PRICE**



Code	Description	Offer Price, £
F13082	Model E binocular with 4X, 10X, 40X objectives	692.00
F13084	Model E trinocular with 4X, 10X, 40X objectives	804.00
F13086	Optional 100X objective	91.00

Motic AE2000 Trionocular Microscope Package



Motic®

The AE2000 inverted microscope is the ideal instrument for routine live cell inspection. Superb optical quality can be expected from a brand new optical series of both brightfield and phase contrast lenses, following Motic's CCIS® Infinity optical system.

Eyepieces:

N-WF10X/20mm with diopter adjustment, +/- 5 diopter

Objectives:

4X/0.10 (WD 12.6mm), PH10X/0.25 (WD 4.1mm), LWD

PH20X/0.30 (WD 4.7mm), LWD 40X/0.50 (WD 3.0mm)

Package includes:

AE2000 trinocular microscope, 0.5X C-mount camera adapter, Moticom 1080 BMH with integrated 1080p HD LCD screen (no computer required)

Worth over
£1500



**FREE Camera
with Integrated
HD Screen +
FREE Camera
Mount**



Code	Description	List Price, £	Offer Price, £
F13076	Motic AE2000 trinocular microscope package	4537.00	2956.00

Lonza FlashGel™ System

Lonza

The FlashGel™ System is the fastest way to separate DNA and the only way to watch DNA migration as it happens. Separates DNA in 2 - 7 minutes. Monitor gel runs right at the bench, without UV light. The highly sensitive system allows a 5 - 20X reduction in DNA levels. The FlashGel™ System consists of enclosed, disposable, precast agarose gel cassettes and a combination electrophoresis and transilluminator unit. Provides both separation and detection of both DNA and RNA.

Lonza FlashGel™ System contains:

- FlashGel dock
- FlashGel camera
- Pack of 1.2% DNA cassettes
- Loading dye & marker

Code	List Price, £	Offer Price, £
F13096	1565.00	1174.00



Accessories

Code	Description	List Price, £	Offer Price, £
F13098	DNA cassette 1.2% agarose 12 + 1 well single-tier 9 pack	131.00	102.00
F13100	DNA cassettes 1.2% 2 x 16 + 1 wells 9 pack	128.00	102.00
F13102	DNA cassettes 2.2% 12 + 1 wells 9 pack	128.00	102.00
F13106	DNA cassette 2.2% agarose 16 + 1 well double-tier (34-well) 9 pack	128.00	102.00
F13108	Recovery cassettes 1.2% agarose 8 + 1 double-tier (18-well) 9 pack	128.00	102.00
F13112	Recovery cassettes 2.2% agarose 8 + 1 double-tier (18-well) 9 pack	128.00	102.00
F13114	RNA cassette 1.2% agarose 12 + 1 single-tier 9 pack	128.00	102.00
F13116	RNA cassette 1.2% agarose 16 + 1 double-tier (34-well) 9 pack	128.00	102.00

NuGenius Gel Documentation System

3
YEARS



NuGenius is a new generation, low cost, integrated system for DNA and protein analysis and gel documentation. Special offer package includes: NuGenius gel doc system, transilluminator (20 x 24cm, 302nm), visible light converter, UV to blue light converter and NuGenius network kit.

- 5 million pixel resolution camera
- Motor driven zoom lens (8 - 48mm f/1.2)
- Integrated 7 inch touch screen
- Built in processor running NuGenius software for image capture and editing
- Dims, w x d x h, mm: 310 x 450 x 750
- FREE delivery subject to location

Save over
£1400



FREE Transilluminator, Visible Light Converter, UV to Blue Light Converter and NuGenius Network Kit

Code	List Price, £	Offer Price, £
F13022	6901.00	5480.00

PCRmax Alpha Cyclers 2 YEARS



Available in 1 block or 2 block chassis, the Alpha Cycler interface is Android based, with a large 7" HD touchscreen for responsive control of the software.

Ideal for multi user environments, users can make any USB device their own login key allowing them to use multiple systems in different locations like a personal unit. Programs can be easily stored, transferred, protected and locked while running.

- Alpha cycler 2 – dual blocks are fully independent and can run different protocols
- Alpha track - remote monitoring can be set to check system performance
- Active sample cooling for sharper amplification and minimal non-specific amplification
- Program wizard - generate a protocol specific to your sequence, template source and amplicon length
- Gradient - allowing for simplified temperature optimisation (1 to 29°C)



Code	Description	List Price, £	Offer Price, £
F13158	1 chassis with a single 96 well block	3816.00	2664.00
F13160	1 chassis with a single 384 well block	3816.00	2664.00
F13162	2 chassis with two 96 well blocks	6694.00	4686.00
F13164	2 chassis with two 384 well blocks	6694.00	4686.00
F13166	2 chassis with one 96 and one 384 well blocks	6694.00	4686.00

Jenway 7205 UV/Visible Scanning Spectrophotometer

2
YEARS

Jenway®

The 72 series spectrophotometers use diode array technology to produce exceptionally fast results. Model 7205 covers a wavelength range of 198 to 800nm with a spectral bandwidth of 5nm.

This spectrophotometer has measurement modes for photometrics, concentration, optical density, quantitation, spectrum scanning and kinetics. Supplied with a 10 x 10mm cuvette holder fitted as standard.

**30%
OFF**



- Colour touchscreen navigation
- Fast scan speed
- Small footprint and very lightweight (2.8kg)
- Results can be saved to USB memory stick
- Optional heated cell accessories available - temperature control of 37°C +/- 5°C, resolution of 0.5°C
- 2 year warranty (1 year on the tungsten lamp)

Code

List Price, £

Offer Price, £

F13168

2348.00

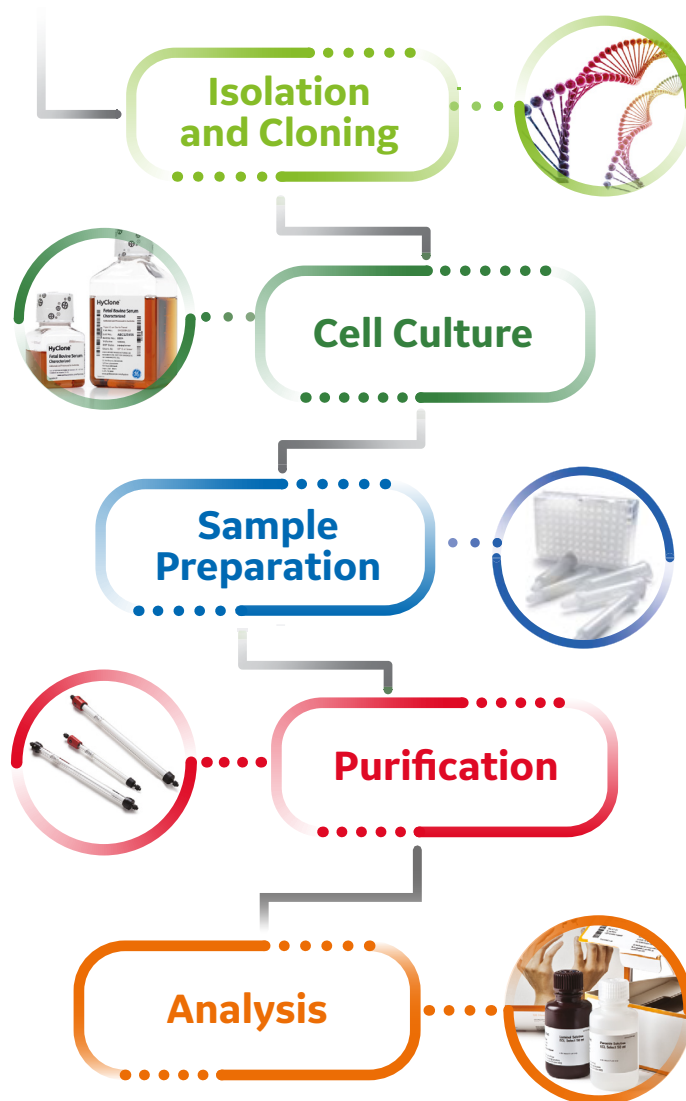
1644.00

GE Healthcare - Protein Workflow Simplified

Below are some examples of great savings available through SLS. Please contact your local SLS rep to discuss your protein workflow. You might also be able to get similar savings on other products by switching to GE.



Distributor
GE Healthcare



Code	Description	Pack	List Price, £	Offer Price, £
F13044	GE Healthcare illustra NAP-5 Columns	50	306.00	*244.00
F13046	GE Healthcare Sera-Mag SpeedBead blocked Streptavidin particles 1µm 1% solids 5 mL 0.05% Na azide	5mL	596.00	*477.00
F13048	GE Healthcare Transfx-C (for CHO cells)	1L	53.00	42.40
F13050	GE Healthcare Transfx-H (for HEK293 cells)	1L	53.00	42.40
F13052	Amersham ECL Prime western blotting detection reagent	3	415.00	*332.00
F13054	Amersham Protran 0.45µm NC 300mm x 4m roll	Each	217.00	173.00

***Buy 2 packs to receive the promotional discount**

SLS Lab Pro Safevac Vacuum Aspiration System



Designed for laboratory waste recovery and separation. It can be widely used in cell culture, DNA extraction, microplate waste removal and any other liquid separation or recovery.

- Sensitive level sensor to prevent liquid overflow during operation
- Waste bottle, tubing and handle are fully autoclavable
- Lid, tubing and handle are easily disassembled for cleaning and autoclaving
- Wide range of adapters to fit tube, microplate and disk plate for various tasks



Code	Vacuum Range, mbar	Aspirating Speed, mL/s	Dims, w x d x h, mm	Bottle Volume, L	List Price, £	Offer Price, £
F13398	0 - 600	1 - 15	180 x 240 x 450	4	1100.00	550.00

SLS Lab Pro Dual Type 1 and 2 Water Purification Systems



Combines ultrapure and DI water in one unit saving money and space. If installation is required please contact our customer service department.

- Novel recirculation loop to save water usage and separate consumables to extend life and reduce running costs
- Variable speed motor saves energy when not in use - reducing running cost and noise
- Dispenses ultrapure water up to 2L/minute
- Type 2 deionised water dispensed at up to 10L/hour
- Small footprint w x d x h, mm, 490 x 290 x 670
- Main unit wall, bench or reservoir mounted
- Ultra-filtered versions nuclease free and endotoxin <0.001EU/mL



Code	Description	List Price, £	Offer Price, £
F13538	Dual type 1 and 2 system with dispense gun	8497.00	5098.00
F13540	Dual type 1 and 2 system with remote dispenser	9149.00	5330.00
F13542	30L storage reservoir	780.00	452.00
F13544	60L storage reservoir	913.00	530.00
F13642	100L storage reservoir	1340.00	777.00

Grant Aqua Pro Orbital-Linear Shaking Water Bath

3 YEARS

grant

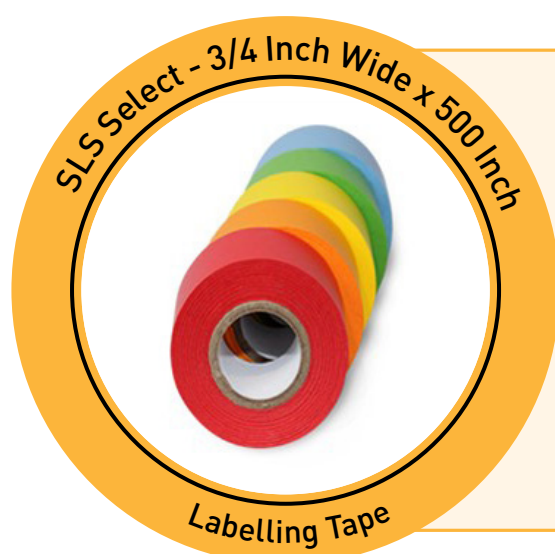
The Aqua Pro shaking water bath range offers exceptional temperature performance and usability. With three bath models to choose from, there is a shaking water bath to meet basic and demanding applications in research, industry and the life sciences. Includes UK & EU cord sets and clear polycarbonate lid. Universal tray included as standard, other shaking trays sold separately.

- Temperature range ambient +5 to 99°C
- Digital Control / LED display
- Linear shaking speed 20-200 RPM
- Countdown timer (1-999 mins)
- Soft start and extremely quiet during operation
- Front located drain tap
- User defined high temperature alarm and cut-off

25% OFF



Code	List Price, £	Offer Price, £
F13020	2513.00	1885.00



SLS Select Labelling Tape

Code	Description	List Price, £	Offer Price, £
F13414	White	5.00	3.50
F13416	Yellow	5.00	3.50
F13418	Blue	5.00	3.50
F13420	Green	5.00	3.50
F13422	Red	5.00	3.50
F13424	Orange	5.00	3.50

SPECIAL OFFER

30% OFF



SLS Select Colour Buffers 1L Bottles

SPECIAL OFFER

50%
OFF

Code	Description	List Price, £	Offer Price, £
F13508	Buffer - pH4 - Red	26.00	13.00
F13510	Buffer - pH7 - Yellow	26.00	13.00
F13512	Buffer - pH10 - Blue	26.00	13.00

Orion Star Benchtop pH Meter Kits 3 YEARS

Thermo
SCIENTIFIC

Record accurate and reliable pH, mV, ORP and temperature measurements with the Thermo Scientific™ Orion™ Star A211 pH Benchtop Meter, ideal for a wide range of applications and advanced pH analysis in the lab.

Perform up to a five point pH calibration, log up to 2000 data point sets with time/date stamp and easily transfer calibration and data logs via USB or RS232 to a printer or computer with free downloadable Orion™ Star Com software.



Code	Description	Contents	List Price, £	Offer Price, £
F13120	ROSS difficult sample meter kit	Sure-Flow glass-body pH electrode, stainless steel ATC probe	892.00	624.00
F13122	Standard ROSS meter kit	Ultra Triode glass-body pH/ATC electrode	822.00	575.00
F13126	Durable ROSS meter kit	Ultra Triode epoxy-body pH/ATC electrode	828.00	580.00
F13128	General purpose meter kit	Triode epoxy-body pH/ATC electrode	767.00	537.00
F13130	Separate pH & ATC sensor meter kit	Ultra glass-body pH electrode, stainless steel ATC probe	850.00	595.00
F13132	Food & beverage meter kit	Sure-Flow epoxy-body pH electrode, stainless steel ATC probe	810.00	567.00

Mettler Toledo FiveEasy Bench pH Meters



Ideally suited for applications in the laboratory, the new FiveEasy and FiveEasy Plus benchtop instruments provide high quality pH/mV or conductivity measurements with the simple click of a button. Compact in design, and featuring various data export opportunities, the FiveEasy series instruments are the perfect companion to get reliable measurement data, all at a reasonable price.

Includes
FREE pack
of Buffers

Model	Range, pH	Range, mV	Range, °C
F20	0.00 to 14.00	-2000 to 2000	1 to 100
FP20	-2.00 to 16.00	-2000 to 2000	-5 to 105



25%
OFF

Code	Description	List Price, £	Offer Price, £
F13186	FiveEasy F20 standard kit with LE438 sensor	467.00	350.00
F13188	FiveEasy Plus FP20 bio kit with LE410 sensor	615.00	461.00

SLS Lab Basics Pipette Filler



Special Offer

SLS Lab Basics Pipette Filler

Code	List Price, £	Offer Price, £
F13404	200.00	100.00

50%
OFF

Density2Go Density Meters



Made for use in the lab and on-the-go, the Densito and DensitoPro are perfect for all applications: from quality control of incoming goods to at-line quality assurance of intermediate or final products. Users can be guided through multi-step procedures with clear directions, from measurement to cleaning.

Density, Brix, and many more units using built-in calculations on the instrument are measured. Temperature compensation factors correct the measurement value to the desired temperature, ensuring accurate results no matter the temperature.

The DensitoPro comes with an RFID and barcode reader, allowing for a simple point-and-shoot sample ID entry.



Code	Description	List Price, £	Offer Price, £
F13182	Densito portable density meter	2285.00	1714.00
F13184	DensitoPro portable density meter	2560.00	1920.00

Liebherr Mediline Refrigerators and Freezers



Large capacity and purpose built for the laboratory where constant use in demanding working conditions often occurs. The advanced electronic controller comes with a variety of visual and audible fault warning alarms and can store three alarm events. Temperature is accurate to 0.1°C and shown in real time.

- Automatic defrost
- Digital temperature display
- Integrated data memory
- RS 485 volt free contact interface
- Door lock and self-closing door
- Environmentally friendly refrigerant used



Code	Description	Temperature Range, °C	Capacity, L	Dims, w x d x h, mm	Max No. Shelves / Drawers	List Price, £	Offer Price, £
F13144	LGv5010 freezer	-9 to -35	478	747 x 750 x 1844	5 / 10	2729.00	2101.00
F13146	LKv5710 refrigerator	+3 to +16	583	747 x 750 x 1844	5 / -	2099.00	1616.00
F13148	LCv4010 fridge freezer	+3 to +16 / -9 to -30	361	597 x 615 x 2003	5 & 3	2049.00	1578.00

Delivery not included

Lec Basic Spark Free Laboratory Refrigerator/ Freezer



A basic spark free laboratory underbench fridge or freezer with lock, offering safe and reliable storage of volatile liquids, reagents, chemicals, poisons and samples.

- Refrigerator includes 3 glass shelves and 1 plastic drawer
- Freezer includes 4 plastic drawers



Code	Description	Capacity, L	Dims. w x d x h, mm	List Price, £	Offer Price, £
F13546	LR111, under bench refrigerator, +2 to +10°C	130	545 x 554 x 845	357.00	268.00
F13548	ISU111, under bench freezer, -18 to -25°C	85	545 x 554 x 845	357.00	268.00

Flystuff Drosophila Tubes

These quality Drosophila tubes are precision moulded from premium grade polystyrene and offer glass-like clarity for excellent visibility.

- Narrow tubes (25 x 95mm)
- Supplied in packs of 500 in either tray pack, bulk pack or reload tray configurations



Code	Description	List Price, £	Offer Price, £
F13516	Tray pack - 5 trays of 100 tubes	95.00	35.00
F13518	Bulk pack - 1 bag of 500 tubes	72.00	23.00
F13520	Reload pack - 5 reload trays of 100 tubes	86.00	43.00

Flystuff Drosophila Tube/Bottle Closures



These closures for Drosophila vials and bottles allow for breathability for the Drosophila while helping to prevent mite contamination.

Flugs

Flugs are bonded dense weave cellulose acetate plugs and provide a better barrier to mites than cotton and paper lids. Reduced evaporation keeps food fresh longer.

Cotton Balls

These top-quality balls are an effective barrier to mite infestation.

Droso-Plugs

These are the densest foam closures available to fly labs. They are reusable (washable, autoclavable), making them the easiest closure available: insert/remove/gas.



Code	Description	Pack	List Price, £	Offer Price, £
F13522	Flugs for narrow (25mm) tubes	1000	150.00	54.00
F13524	Flugs for stock bottles	1000	218.00	129.00
F13526	Droso-plugs for narrow (25mm) tubes	6760	809.00	363.00
F13528	Cotton balls large	2000	119.00	39.00

LMS Series 2 Cooled Incubators

2
YEARS

LMS

A reliable and accurate temperature controlled cabinet (-10°C to +50°C). The design of the purpose built incubator facilitates the addition of optional extras to provide greater flexibility for individual use.

- Digital control with digital readout
- Fan assisted air circulation
- Full P.I.D. heating control to ensure stable internal temperature
- Pre-set 70°C safety cut out for total cabinet protection
- Hermetically sealed refrigeration system

**15%
OFF**

Delivery not included



Code	Capacity, L	No. of Shelves	Ext. Dims, w x d x h, mm	List Price, £	Offer Price, £
F13088	135	3	600 x 600 x 945	2380.00	2023.00
F13090	200	4	600 x 600 x 1300	2805.00	2384.00
F13092	290	5	600 x 600 x 1670	3070.00	2610.00
F13094	420	5	750 x 740 x 1600	3380.00	2873.00

Corning® LSE™ Benchtop Shaking Incubator with Platform

CORNING

30%
OFF

Truly a benchtop style, the lid on the Corning benchtop shaking incubator has a low pivot point which provides a space-saving size sure to fit on the lab bench and under shelves. Each unit includes a software package, which provides the option of saving data to an external computer or monitoring rpm and temperature throughout runs. The maximum capacity is 4 x 1L flasks.

- Outstanding temperature uniformity
- Large viewing area for undisturbed monitoring of samples
- Broad temperature range
- Multiple shelving options
- Precision control shaking mechanism



Code	Description	List Price, £	Offer Price, £
F13016	Benchtop shaking incubator with platform	2836.00	1985.00

SLS Lab Basics Mini Vacuum Pumps



Special Offer

SLS Lab Basics Mini Vacuum Pumps

1
YEAR

Up to
35%
OFF

Code	Diaphragm Material	Delivery, L/min	Ultimate Vacuum, mbar. Abs	List Price, £	Offer Price, £
F13400	EPDM rubber	6	100	291.00	205.00
F13402	PTFE coated	5.5	160	349.00	225.00



CORNING

Break the 3D barrier Get there fast with Corning.

Are you just getting started in 3D cell culture? Looking for proven ways to scale up? Or making the move to high throughput screening? Whatever your challenge, Corning can help you break through the barriers to create more *in vivo*-like environments and predictive models. For more than 25 years, Corning has delivered innovations that have advanced the science of 3D cell culture. We pioneered the development of novel tools providing easier access to *in vivo*-like 3D models, such as **Corning® spheroid microplate**, **Corning® Matrigel® matrix** and **Transwell® permeable supports**, and we continue to support you with a diverse and evolving portfolio of innovative 3D cell culture products, solutions, protocols, and expertise. Corning is committed to working with you in critical areas like cancer biology, tissue engineering, and regenerative medicine – to help you bring safe, effective drugs and therapies to market in less time with greater certainty. Find out how Corning can help you conduct more biologically relevant research and better predict how your next discovery will behave in the real world.

VESSELS SURFACES MEDIA

CORNING 3D CELL CULTURE

© 2020 Corning Incorporated. All Rights Reserved.

Visit www.scientificlabs.co.uk and discover the Corning range.

SLS Flowgen Compact Shaking Incubator

2 YEARS



The INCU-SHAKER™ Mini is a compact shaking incubator, offering a large work space which can accept several platforms for use with a variety of flasks, tubes and other common vessels. Temperature, shaking speed and run time are displayed on the large LED control panel located on the front side of the unit. The standard platform (included) features a non-slip rubber coated surface, ideal for tissue culture flasks, petri dishes and staining trays. Exchange flask clamps in one second with the optional MAGicClamp™ magnetic platform.

- Exterior dimensions, w x d x h, cm: 28 x 48 x 33
- Platform dimensions, cm: 28 x 41 x 33
- Temperature range: ambient +5 to +60°C (Increments of 0.1°C)
- Shaking orbit: 19mm
- Shaking speed range: 30 to 300 RPM



Code	Description	List Price, £	Offer Price, £
F13324	Flowgen Incu-Shaker Mini	2606.00	1791.00

Accessories

Code	Description	List Price, £	Offer Price, £
F13326	Flowgen MAGicClamp Universal Platform	220.00	166.00
F13328	Clamp 500mL for Flowgen Incu-shaker	34.00	26.00
F13330	Clamp 1L for Flowgen Incu-shaker	51.00	39.00

Astell Benchtop and Compact Autoclaves



with **FREE Options (worth £635)**

These autoclaves are ideal for laboratory sterilisation procedures with the option of a manual water-fill (classic models) or integral reservoir (Ecofill models). They require no plumbing and operate from a standard single phase power supply. The new touchscreen controller ensures ease of operation for new users, whilst retaining the flexibility and diagnostic capability favoured by lab managers and technical personnel.

- FREE load sensed process timing (worth £395)
- FREE assisted cooling (worth £240)



Front Loading, Benchtop

Code	Description	Volume, L	List Price, £	Offer Price, £
F13056	Classic	33	6265.00	5639.00
F13058	Classic	43	7265.00	6539.00
F13060	Classic	63	8570.00	7713.00
F13062	Ecofill	33	7115.00	6404.00
F13066	Ecofill	43	8180.00	7362.00
F13068	Ecofill	63	9505.00	8555.00

Top Loading, Floorstanding

Code	Description	Volume, L	List Price, £	Offer Price, £
F13070	Ecofill	63	9505.00	8555.00
F13072	Classic	63	8570.00	7713.00

Rodwell Portaclave®™ Portable Autoclave



- 15, 22 or 30L
- Max working temp - 121°C
- Min working temp - 7°C
- Manual or vario digital controller
- Robust space saving design
- Single phase 'plug & play'
- Compact and fully portable
- No plumbing needed
- Minimal maintenance
- Grade 316 stainless steel chamber
- Suitable for culture media
- Sodium chloride must not exceed a level greater than 500 ppm
- Use regular mains water only - DO NOT USE distilled or RO water

SPECIAL PRICE



Code	Description	Volume, L	List Price, £	Offer Price, £
F13032	Thermostatically controlled electric autoclave	15	2115.00	1798.00
F13034	Thermostatically controlled electric autoclave	22	2600.00	2210.00
F13036	Thermostatically controlled electric autoclave	30	3105.00	2639.00
F13038	Time and temperature controlled autoclave	15	2750.00	2338.00
F13040	Time and temperature controlled autoclave	22	3200.00	2720.00
F13042	Time and temperature controlled autoclave	30	3750.00	3188.00

SLS Select Autoclave Tape



SLS Select Autoclave Tape

Supplied in singles

Code	Description	Offer Price, £
F13408	19mm x 50m	3.60
F13412	24mm x 50m	3.60

SPECIAL OFFER

SLS Lab Pro S500 Mini Chiller



With a sophisticated touchscreen controller and 500W cooling power the S500 Mini is ideal for many laboratory applications. Built to save space, the Mini is about the size of the average desktop PC.

- Set temperature range of -10°C to +60°C
- Universal 90-260 VAC input voltage and 50/60Hz input frequency suitable for use all over the world
- Variable speed compressor and fan
- Whisper quiet
- Continual adjustment of refrigerant mass flow rate to control duty
- Water system constructed from 12mm push fit fittings
- USB port for downloading system data



Code	Description	List Price, £
SLS1047	SLS Lab Pro S500 Mini Chiller	3285.00

SLS Lab Pro S1750 Series Chillers



The S1750 offers excellent cooling power in a compact and robust package. Designed for the laboratory, but equally comfortable in an engineering or manufacturing environment, the S1750 is a versatile unit.

- Pressure gauge internal by pass valve to adjust pump pressure, as standard
- Optional RS485 interface for PC connection
- Permissible temperature in return line +70°C
- Alarm output, potential free change over contact (maximum 30 VA)
- Plastic moulded bath tanks, suitable for DI and nonferrous applications
- Low liquid level protection with optical and audible alarm signal
- Standalone filling level indicator, easy to access and change
- Large bright LED display
- Splash proof keypad with integrated mains switch
- Reliable microprocessor PID temperature control
- Vents are located on all faces for flexible installation



Code	Description	Cooling Capacity, kW	List Price, £
SLS1059	S1750 with 5L/min pump	1.7	4376.00
SLS1063	S1750 with 10L/min pump	1.7	4492.00
SLS1067	S1750 with 17L/min pump	1.7	4692.00



OHAUS Laboratory Products



Ingeniously Practical

Find us:



LabTube

www.scientificlabs.co.uk

SCIENTIFIC LABORATORY SUPPLIES PRESENTS

FOCUS

EXCLUSIVE OFFERS & EXCITING NEW PRODUCTS

See page 31...

Worth over
£1500

FREE Camera
with Integrated
HD Screen +
FREE Camera
Mount

Motic AE2000 Trionocular Microscope Package

The ideal instrument for
routine live cell inspection



Scientific Laboratory Supplies
Wilford Industrial Estate
Ruddington Lane
Nottingham, NG11 7EP
United Kingdom

t. (Eng & Wales) 0115 982 1111
t. (Scotland) 01236 431 857

www.scientificlabs.co.uk

The AE2000 inverted microscope's
superb optical quality can be
expected from a brand new optical
series, following Motic's CCIS®
Infinity optical system

SPRING EDITION

2020