

FOCUS

SPRING

SEE INSIDE FOR:
EXCLUSIVE OFFERS
& **EXCITING NEW PRODUCTS**

△ **LIEBHERR**
Performance Freezers
(See page 32)

**22%
OFF**

△ **BENCHMARK**
Roto-Mini™ Plus Rotator
(See page 17)

**57%
OFF**

OHAUS®
Adventurer™ Balances



**34%
OFF**

SEE
PAGE
27



**26%
OFF**


SEE
PAGE
4


EPPENDORF
5427 R Microcentrifuges



2026

 NEW product

 Length of warranty

 Made in Britain



WELCOME

Welcome to another fantastic issue of **FOCUS**, packed with exclusive offers on laboratory products from market leading brands!

We have some exciting **NEW** offers in this edition, including the IKA T 10 battery ULTRA-TURRAX Dispersers and the NIPPON Genetics EUROPE FastGene® qFYR Real-Time PCR Systems. Speak to your local account manager to find out how these products can change your lab life for the better.

In addition to this issue, visit our website for online exclusive **FOCUS** Extra offers, for even more great savings on many other fantastic products.

REMEMBER

These offers are **EXCLUSIVE** to SLS and valid until:


31st May 2026

KEY

SUSTAINABILITY ATTRIBUTES

 Raw materials

 Manufacturing

 Packaging & distribution

 Use

For more information on our Sustainability Attributes, please visit:

 Disposal

www.scientificlabs.co.uk/sustainability



Buy One, Get One TREE

Look out for products with the 'Buy One, Get One TREE' icon in our promotions. With every purchase of these products, we will plant a tree on your behalf.

Working in partnership with **Ecologi**



Eppendorf Research® plus Single Channel Pipette Pack
See page 5



OHAUS® Frontier™ 5000 Series Multi Pro Centrifuge Bundles
See page 16



IKA Vortex 3 Mixer
See page 18



Accuris SmartReader™ 96 Microplate Absorbance Reader with Incubation
See page 36



Blue-Ray Biotech TurboCyclers
See page 42



Thermo Scientific™ Nalgene™ Rapid-Flow™ Bottle Top Filters and Filter Units
See page 45

HIGHLIGHTS



SCIENTIFIC LABORATORY SUPPLIES



Eppendorf Multipette® M4 Repeating Pipette Starter Kit

Aspirate liquid once and dispense up to 100 times by positive displacement. There is no air cushion to be affected by liquid sample properties and the correct volume is always dispensed. Matching Combitips® advanced and ViscoTip® tips are automatically recognised, eliminating time consuming volume calculations, and are hermetically sealed.

- Easy-to-read digital display
- Step counter and sleep function
- Emptied Combitips® advanced tip easily ejected
- Safe handling of toxic, radioactive or infectious liquids
- **Includes:** Multipette® M4, Combitips® advanced Box 2.0, Combitips® advanced assortment pack (1 tip of each size), and Pipette Holder 2

27% OFF



eppendorf



Code	List Price, £	Offer Price, £
F24396	411.00	302.00

Eppendorf Combitips® advanced Positive Displacement Pipette Tips

Accurately and precisely pipette both viscous and volatile liquids. With an integrated piston, they function according to the positive displacement principle and ensure that the correct volume of liquid is dispensed regardless of the liquid's physical properties.

- For Eppendorf Multipette® multi-dispenser pipettes
- Elongated in volumes 2.5, 5, and 10mL
- Colour coded
- Unique funnel geometry for comfort and glove protection

23% OFF



eppendorf



Supplied as 100 (4 packs of 25)

Code	Volume, mL	Colour Code	List Price, £	Offer Price, £
F24342	0.1	White	98.60	76.20
F24344	0.2	Light blue	98.60	76.20
F24346	0.5	Violet	98.60	76.20
F24348	1.0	Yellow	98.60	76.20
F24350	2.5	Green	98.60	76.20
F24352	5.0	Blue	98.60	76.20
F24354	10	Orange	98.60	76.20
F24356	25	Red	116.00	89.00
F24358	50	Light grey	128.00	99.00

Eppendorf 5427 R Microcentrifuges 2 YEARS

A high speed, refrigerated microcentrifuge for high throughput research. Cooled with natural refrigerant (R290) to protect your samples - and the planet.

- Temperature range from -11 to 40°C (depending on rotor and speed used)
- FastTemp function for quick pre-cooling
- ECO shut-off can be programmed to engage for energy saving and extended compressor life
- Built-in condensation drain to eliminate water accumulation
- Automatic rotor recognition and imbalance detection

26% OFF



eppendorf



Code	Includes Rotor	Rotor Capacity	Rotor Max Speed, RPM	Rotor Max Speed, x g	List Price, £	Offer Price, £
F20210	FA-45-48-11 with aerosol-tight QuickLock® lid	48 x 1.5/2.0mL tubes	12700	18213	6006.00	4416.00
F20214	FA-45-30-11 with aerosol-tight QuickLock® lid	30 x 1.5/2.0mL tubes	14000	20817	5909.00	4345.00

Eppendorf CryoCube® F570 Series ULT Freezers 5 YEARS

Air-cooled freezer based on a strong compressor for fast recovery to -80°C after opening, minimising operating costs while providing superior protection for your valuable samples. With traditional insulation (F570n) or combined insulation based on vacuum insulation panels and polyurethane foam which enables extremely low energy consumption (F570h/hw).

- Volume: 570L (up to 40000 samples)
- Temperature range: -50 to -86°C
- Efficient compressor control system
- Lockable main switch to prevent accidental switch-offs
- 5 compartment layout and 5 insulated inner doors
- Stainless steel interior; powder-coated steel exterior

44% OFF



eppendorf



May incur an additional delivery charge

Code	Model	Energy Consumption, kWh/24hr	Dims, w x d x h, mm	List Price, £	Offer Price, £
F23020	F570n, air-cooled	8.3	1103 x 898 x 1936	14460.00	8052.00
F19088	F570h, air-cooled	7.4	1103 x 898 x 1950	15690.00	8737.00
F25042	F570hw, water-cooled	8.0	1103 x 898 x 1950	16960.00	9444.00

Eppendorf Research® plus Single Channel Pipette Pack

eppendorf



Meeting the highest needs of precision and accuracy, this mechanical air-cushion pipette is remarkably light, both in terms of weight and pipetting forces. Ideal for accurate, easy, and ergonomic manual pipetting of aqueous solutions.

- 3 button operation
- Designed to Eppendorf PhysioCare Concept® principles
- Autoclavable
- **Includes:** 6 x Research® plus single channel pipettes (0.1 - 2.5µL, 0.5 - 10µL, 2 - 20µL, 10 - 100µL, 20 - 200µL, and 100 - 1000µL), Pipette Carousel 2, 6 x epT.I.P.S.® Box 2.0 (96 x pipette tips/box), and ballpoint pen



26% OFF

Code	List Price, £	Offer Price, £
F23022	1443.00	1061.00

Eppendorf epT.I.P.S.® Standard BioBased Pipette Tips

eppendorf

By using a second-generation biobased polymer made from 100% renewable resources (e.g. waste and residues from vegetable oil refining or waste cooking oil), the product-related carbon footprint of these tips is significantly reduced.

- In resealable bags
- ISCC certified plastic that can be traced back to biological waste material
- Identical performance quality as equivalent fossil-based epT.I.P.S.®
- Eppendorf Quality purity grade

24% OFF



Code	Volume, µL	Length, mm	Pack	List Price, £	Offer Price, £
F23024	0.1 - 10	34	1000 (2 x bags of 500)	66.00	50.10
F23026	0.1 - 20	40	1000 (2 x bags of 500)	66.00	50.10
F23028	0.5 - 20	46	1000 (2 x bags of 500)	62.70	47.60
F23030	2 - 200	53	1000 (2 x bags of 500)	40.70	30.90
F23032	20 - 300	55	1000 (2 x bags of 500)	40.70	30.90
F23034	50 - 1000	71	1000 (2 x bags of 500)	40.70	30.90
F23036	50 - 1250	76	1000 (2 x bags of 500)	69.20	52.50
F23038	50 - 1250	103	1000 (4 x bags of 250)	70.10	53.20
F23040	250 - 2500	115	500 (5 x bags of 100)	47.60	36.10
F23042	100 - 5000	120	500 (5 x bags of 100)	55.50	42.10
F23044	200 - 5000	175	300 (3 x bags of 100)	37.80	28.70

Eppendorf ThermoMixer® C

2 YEARS

eppendorf

All-in-one versatile device combines excellent mixing performance with excellent temperature control to ensure complete, dependable and reproducible test results.

- Block homogeneity assured
- 2nd Mix-Control technology mixes in a controlled, circular movement
- Tool-free block exchange within seconds
- 5 keys for common programs plus 15 additional, storable programs
- Robust design and LCD display
- Thermoblocks not included

22% OFF



Code	Speed Range, RPM	Temp Range, °C	Orbit Size, mm	Dims, w x d x h, mm	List Price, £	Offer Price, £
F17006	300 - 3000*	15 below RT - 100*	3	206 x 304 x 136	2845.00	2231.00

*Depending on SmartBlock used

SmartBlock Thermoblocks

Code	Description	List Price, £	Offer Price, £
F21920	SmartBlock 0.5mL for 24 x 0.5mL vessels, incl. Transfer Rack 0.5mL	590.00	463.00
F17008	SmartBlock 1.5mL 24 x 1.5mL vessels, incl. Transfer Rack 1.5/2.0mL	590.00	463.00
F17010	SmartBlock 2.0mL for 24 x 2.0mL vessels, incl. Transfer Rack 1.5/2.0mL	590.00	463.00
F17012	SmartBlock 5mL for 8 x 5mL vessels	700.00	549.00
F21928	SmartBlock 15mL for 8 x 15mL conical tubes	700.00	549.00
F21926	SmartBlock 50mL for 4 x 50mL conical tubes	642.00	503.00



SLS Select Surface Cleaner Wipes

72% OFF

Disposable polyviscose wet wipes impregnated with a 70% isopropyl alcohol solution. Kills 99% of bacteria on contact. Biocide-free. Tested to EN14348.

Code	Pack	List Price, £	Offer Price, £
F25129T	Tub of 200 wipes	14.54	4.00

NEW! Eppendorf
Research® 3 neo



Make Pipetting your Own

The new Eppendorf Research® 3 neo

Join us in our mission to transform liquid handling with the next generation of Eppendorf pipettes. The Research 3 neo is here to help you break free from a one-size-fits-all approach to liquid handling, letting you tailor your pipetting experience to your needs. Customize your pipetting with a range of settings and accessories, all while experiencing unmatched reliability and ergonomics.

- > Benefit from a new volume lock and gear shift for faster or easier volume setting, ColorTag marking rings, and improved temporary adjustment.
- > Built with longevity, accuracy, and reliability in mind: using only premium components and undergoing extensive testing.
- > Made for your hands: enhanced ergonomics with low weight, a shorter pipetting button, a smooth feel, and optimized hand balance.

Discover the Eppendorf range:

www.scientificlabs.co.uk/eppendorf_research_3_neo

SLS Lab Basics Pipettes

3 YEARS

Single channel:

- Ergonomic design ensuring lightweight and soft plunger movement
- Click-stop system for volume selection
- Colour coded for easy identification
- Calibration conforms to EN-ISO 8655 with report enclosed with every pipette

Multi channel:

- Smooth and light tip loading and ejection
- Leak free sealing of tips
- Manifold is easily removable, fully autoclavable and can rotate 360° for easy right or left hand operation



Code	Channel	Volume Range, μL	List Price, £	Offer Price, £
F151300T	1	0.1 - 2.5	153.00	48.00
F151301T	1	0.5 - 10	153.00	48.00
F151305T	1	2 - 20	153.00	48.00
F151302T	1	5 - 50	153.00	48.00
F151303T	1	10 - 100	153.00	48.00
F151306T	1	20 - 200	153.00	48.00
F151304T	1	100 - 1000	153.00	48.00
F151307T	1	500 - 5000	182.00	54.00
F151308T	1	1000 - 10000	182.00	54.00
F151313T	8	0.5 - 10	680.00	190.00
F151309T	8	5 - 50	680.00	190.00
F151310T	8	10 - 100	680.00	190.00
F151311T	8	20 - 200	680.00	190.00
F151312T	8	30 - 300	680.00	190.00
F151318T	12	0.5 - 10	746.00	240.00
F151314T	12	5 - 50	746.00	240.00
F151315T	12	10 - 100	746.00	240.00
F151316T	12	20 - 200	746.00	240.00
F151317T	12	30 - 300	746.00	240.00

SLS Lab Basics Pipette Filler

5 YEARS

With adjustable valves, microprocessor control, and UV resistant housing.

- **Includes:** charging stand, magnetic/fixable wall mount, nozzle adapter, rechargeable battery, 0.45 μm filter, 5 x coloured nose cones, and power adapter.



Code	List Price, £	Offer Price, £
F151350T	263.00	130.00

SLS Lab Pro Pipettes

3 YEARS



Ergonomic comfort, reliable precision, and everyday practicality. Lightweight and balanced, each pipette fits naturally in the hand to reduce strain during repetitive pipetting tasks. A smooth, low-force piston system ensures effortless operation and consistent, reproducible results.

- Durable, reliable construction
- Accurate and reproducible ISO-compliant precision
- Fully autoclavable
- Adjustable tip-ejector configurable for right- or left-handed users
- Secure volume adjustment ratchet mechanism prevents accidental changes
- Colour-coded for easy identification



OVER
60%
OFF

Code	Channel	Volume Range, μL	List Price, £	Offer Price, £
F151284T	1	0.2 - 2	338.00	110.00
F151285T	1	1 - 10	338.00	110.00
F151286T	1	2 - 20	338.00	110.00
F151287T	1	10 - 100	338.00	110.00
F151288T	1	20 - 200	338.00	110.00
F151289T	1	100 - 1000	338.00	110.00
F151290T	1	500 - 5000	341.00	120.00
F151291T	1	1000 - 10000	341.00	130.00
F151292T	8	0.5 - 10	776.00	245.00
F151293T	8	2 - 20	776.00	245.00
F151294T	8	20 - 200	776.00	245.00
F151295T	8	20 - 300	776.00	245.00
F151296T	12	0.5 - 10	845.00	290.00
F151297T	12	2 - 20	892.00	290.00
F151298T	12	20 - 200	892.00	290.00
F151299T	12	20 - 300	892.00	290.00



OwiBio Western Blot Reagents

UP TO
20%
OFF

Code	Description	Pack	List Price, £	Offer Price, £
F25090T	ECL RevelBlot® Pico HRP chemiluminescent substrate	250mL	118.00	95.00
F25095T	ECL RevelBlot® Femto HRP chemiluminescent substrate	100mL	214.00	172.00
F25091T	ECOLOR® prestained protein ladder	100 lanes (500 μL)	126.00	101.00

Gilson PIPETMAN® 4 Pipette Kit

3 YEARS

GILSON

A reliable and economical turnkey solution to equip a bench with accurate, precise, and durable pipettes. PIPETMAN® air-displacement pipettes are recognised as one of the world standards and offer low pipetting forces while preserving standard pipetting habits.



- Built to last, the economical solution for years of pipetting
- Comfort handles to improve ergonomics, can be personalised with included labels
- **Includes:** 4 x PIPETMAN® pipettes: models P2, P20, P200, and P1000 (metal ejector), 3 x PIPETMAN® DIAMOND tips TIPACKS: models DL10, D200, and D1000, 4 x SINGLE™ pipette holders, 4 x PIPETMAN® comfort handles, and 1 x sheet of 12 PIPETMAN® comfort handle labels

35% OFF



Code	List Price, £	Offer Price, £
F13192	1072.00	695.00

Gilson PIPETMAN® L 4 Pipette Kit

3 YEARS

GILSON

Made for convenience and increased performance, includes comfortable and reliable pipettes to equip a bench right away, and tackles most laboratory needs. Lightweight and well-balanced, PIPETMAN® L pipettes combine an ergonomic design with minimised pipetting forces.



- Adjustable tip ejector button to adapt to both right and left handed users
- True volume-locking mechanism
- Fully autoclavable without disassembly
- **Includes:** 4 x PIPETMAN® L pipettes: P2L, P20L, P200L, and P1000L (metal ejectors), 3 x PIPETMAN® DIAMOND tips TIPACKS: DL10, D200, and D1000, 4 x SINGLE™ pipette holders, and 4 x plastic tip ejectors

33% OFF



Code	List Price, £	Offer Price, £
F13190	1134.00	755.00

SLS Select Filter Pipette Tips



Pre-sterilised pipette tips with a 10^{-3} sterilisation assurance level, an inert aerosol filter that will not harm samples in the event of over-pipetting, and low retention technology for maximum sample retainment.

- Certified RNase/DNase, PCR inhibitor, and human DNA free
- Non-pyrogenic
- Packaged in durable racks with hinged lids

UP TO
74% OFF



See the SLS website for offers on more SLS Select pipette tips!

Code	Volume, μ L	Length, mm	Pack	List Price, £	Offer Price, £
F25122T	10	Extended, 45.0	960 (10 x 96)	114.00	39.50
F25124T	20	51.4	960 (10 x 96)	127.00	39.50
F25125T	100	51.4	960 (10 x 96)	127.00	39.50
F25126T	200	50.7	960 (10 x 96)	133.00	39.60
F25120T	200	Extended, 77.5	768 (8 x 96)	109.00	40.50
F25123T	300	Extended, 77.5	768 (8 x 96)	109.00	40.50
F25127T	1000	72.0	1000 (10 x 100)	158.00	41.00
F25128T	1250	Extended, 102.0	768 (8 x 96)	139.00	41.00

ClearLine[®] LTS[™] Compatible Pipette Tips



Polypropylene tips compatible with Rainin LTS[™] pipettes. Available in either ClearLine[®] Plus hinged and stackable racks, or HybridRack[™] racks with polypropylene tip tray and cardboard base/lid using significantly less plastic than traditional tip racks.

- Sterile
- Filtered



UP TO
69% OFF



*Sustainability Attributes apply to HybridRack[™] range only

See the SLS website for offers on more ClearLine[®] LTS[™] compatible pipette tips!

Code	Volume, μ L	Packaging	Pack	List Price, £	Offer Price, £
F23252T	20	ClearLine [®] Plus rack	960 (10 x 96)	167.00	51.50
F23254T	20	HybridRack [™]	960 (10 x 96)	148.00	51.50
F23256T	200	ClearLine [®] Plus rack	960 (10 x 96)	167.00	51.50
F23284T	200	HybridRack [™]	960 (10 x 96)	148.00	51.50
F23286T	1000	ClearLine [®] Plus rack	768 (8 x 96)	148.00	51.50
F23288T	1000	HybridRack [™]	768 (8 x 96)	148.00	51.50

Thermo Scientific™ Finnpipette™ Good Laboratory Pipetting (GLP) Kits

5 YEARS



Thermo
SCIENTIFIC



Enjoy the convenience of having a variety of Finnpipette™ single channels packaged together, in a range of volumes, with compatible Finntip pipette tips and a pipette stand to support good laboratory pipetting in your lab.

- Finnpipette™ F1 pipettes feature a lightweight design, low plunger, tip attachment and ejection forces - plus a secure volume lock and adjustable finger rest
- Finnpipette™ F2 pipettes feature rugged construction and ease of maintenance for your more demanding applications; built with tough PVDF components that stand up to harsh chemicals and UV light, these variable volume pipettes are fully autoclavable without disassembling



**40%
OFF**

Code	Includes	List Price, £	Offer Price, £
F22116T	3 x Finnpipette™ F1 pipettes: 1 - 10µL, 10 - 100µL, 100 - 1000µL; Flex tips: 10µL, 200µL, 1mL (racks of 96); F-stand; GLP guide; reagent reservoir demo pack	965.00	579.00
F22118T	4 x Finnpipette™ F1 pipettes: 0.2 - 2µL, 2 - 20µL, 20 - 200µL, 100 - 1000µL, Flex tips: 10µL, 2 x 200µL, 1mL (racks of 96); F-stand; GLP guide; reagent reservoir demo pack	1162.00	698.00
F22120T	3 x Finnpipette™ F1 pipettes: 10 - 100µL, 100 - 1000µL, 1000 - 10000µL; Flex tips: 200µL, 1000µL (racks of 96), 10mL (rack of 24); F-stand; GLP guide; reagent reservoir demo pack	981.00	589.00
F22128T	3 x Finnpipette™ F1 pipettes: 2 - 20µL, 20 - 200µL, 100 - 1000µL; Flex tips: 2 x 200µL, 1mL (racks of 96); F-stand; GLP guide; reagent reservoir demo pack	965.00	579.00
F22122T	3 x Finnpipette™ F2 pipettes: 1 - 10µL, 10 - 100µL, 100 - 1000µL; Flex tips: 10µL, 200µL, 1mL (racks of 96); F-stand; GLP guide; reagent reservoir demo pack	914.00	549.00
F22124T	4 x Finnpipette™ F2 pipettes: 0.2 - 2µL, 2 - 20µL, 20 - 200µL, 100 - 1000µL; Flex tips: 10µL, 2 x 200µL, 1mL (racks of 96); F-stand; GLP guide; reagent reservoir demo pack	1126.00	676.00
F22126T	3 x Finnpipette™ F2 pipettes: 10 - 100µL, 100 - 1000µL, 1000 - 10000µL; Flex tips: 200µL, 1000µL (racks of 96), 10mL (rack of 24); F-stand; GLP guide; reagent reservoir demo pack	932.00	560.00
F22130T	3 x Finnpipette™ F2 pipettes: 2 - 20µL, 20 - 200µL, 100 - 1000µL; Flex tips: 2 x 200µL, 1000µL (racks of 96); F-stand; GLP guide; reagent reservoir demo pack	914.00	549.00



Bimos Neon Laboratory Chairs

5 YEARS



**20%
OFF**

Ergonomic and flexible chairs with 1+1 system of chair and upholstery combination. Seat height, inclination, backrest height and depth adjustment. Magic synthetic leather with orange flex strip and basalt grey backrest shell.



Code	Model	List Price, £	Offer Price, £
F19436	Neon 2 with castors and synchronous technology	612.00	490.00
F19438	Neon 3 with mounting aid, glides, and permanent contact backrest	648.00	519.00

SLS Lab Pro Safevac Aspiration System

1 YEAR



Designed for laboratory waste recovery and separation of liquid and solid. Can be widely used in cell culture, DNA extraction, microplate waste removal, and any other liquid separation or recovery.

- Sensitive level sensor prevents liquid overflow
- Fully autoclavable waste bottle, tubing and handle
- Lid, tubing, and handle are easy to disassemble for cleaning and autoclaving
- Includes: complete range of adapters to fit tips, tubes and microplates

60% OFF



Code	Vacuum Range, mbar	Aspiration Speed, mL/s	Volume, L	Dims, w x d x h, mm	List Price, £	Offer Price, £
F151283T	0 - 600	1 - 17	4	180 x 240 x 450	1726.00	695.00

Mettler Toledo SevenDirect™ Meter Kits

1 YEAR

METTLER TOLEDO

Accurate and flexible meters with large colour touchscreen providing direct measurement and easy data entry. Closed connector compartment and replaceable cover keep the instrument safe from dust and spills, even with the sensors attached. The EasyPlace electrode arm makes placing the sensor easy, with dedicated positions for cleaning and storage.

- Instructions guide users through the sensor calibration process
- Stores data like timestamp, sample and sensor ID
- Two-level user management protects important settings
- Display adapts to your needs

30% OFF



Code	Model	Supplied with	List Price, £	Offer Price, £
F20086	SD20 pH meter	pH electrode InLab Expert Pro-ISM, electrode arm, pH buffer sachets	1390.00	973.00
F20102	SD30 conductivity meter	Conductivity sensor InLab 731-ISM, electrode arm, conductivity standard sachets	1895.00	1327.00
F20138	SD23 pH/conductivity meter	pH electrode InLab Expert Pro-ISM, conductivity sensor InLab 731-ISM, electrode arm, pH buffer and conductivity standard sachets	2770.00	1939.00

OFFICIAL SHOW SPONSORS



eppendorf



Wednesday 13th **MAY 2026**

East Midlands Conference Centre
NOTTINGHAM

#SciLabShow2026

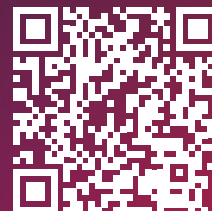
Registrations Now Open

Join us at the Scientific Laboratory Show & Conference 2026 to experience the latest innovations in laboratory equipment, consumables and services.

Meet over 70 leading manufacturers. Explore keynote speakers, live seminars and speak with industry experts.



SCAN to register



Register free at:

www.scientificlaboratoryshow.co.uk

Email: showenquiries@scientific-labs.com

Phone: +44(0) 115 982 1111



MEET. LEARN. DISCOVER.

Benchmark MC-24™ Touch High Speed Microcentrifuge

2 YEARS

Benchmark Scientific

Featuring large, full colour touch screen control showing actual speed, set, and remaining time. Up to 9 speed/time profiles can be stored in memory and the home screen displays a "mySpin" icon for instant recalls a designated favorite profile.

- Unique air-flow system keeps samples cool
- Cold room safe
- **Includes:** unique COMBI-Rotor™ with lid that will accept 24 x 1.5/2.0mL tubes, 2 strips of 0.2mL tubes (16 x 0.2mL), and up to 12 x spin column kits without requiring separate adapters

52% OFF



Code	Max Speed, RPM	Max RCF, x g	Dims, w x d x h, mm	List Price, £	Offer Price, £
F151253	13500	16800	230 x 305 x 197	2931.00	1421.00

SLS Flowgen Plate Spinner

2 YEARS

SLS FLOWGEN

Mini sized centrifuge with a swing out rotor for microplates, which enables you to centrifuge plates before PCR to ensure all reactants are in the bottom of the wells. Includes a uniquely designed, swing out rotor with two plate carriers that rest at a 75° angle, so plates can be inserted without sealing tapes/caps. Upon closing the lid of the centrifuge, the rotor accelerates and the centrifugal force swings the plates into a horizontal position.

- Accepts most types of PCR plates
- Most samples can be spun down in less than 20 seconds.
- To end a run, simply open the lid and the automatic, electric brake brings the rotor to a quick, smooth stop in just 4 seconds

62% OFF



Code	Max Speed, RPM	Max RCF, x g	Dims, w x d x h, mm	List Price, £	Offer Price, £
F14352	2550	600	230 x 260 x 197	1185.00	450.00

OHAUS® Frontier™ 5000 Series Multi Pro Centrifuge Bundles

2
YEARS

33%
OFF



Designed for universal use in research, industrial, and clinical laboratories. They feature high-speed performance at maximum volume, automatic rotor identification, and safety features.

- Intuitive design for easy access to parameter settings and quick rotation between applications
- Backlit LCD screen
- Chemical-resistant stainless steel
- Protective features, including automatic over-speed protection, imbalance detection and self-diagnostic system
- Program storage up to 99 runs



May incur an additional delivery charge

Code	Model	Supplied with	List Price, £	Offer Price, £
F22028	FC5718	Cell culture rotor package: swing out rotor (4 x 145mL), 2 x rack (1 x 50mL Ø29mm), 2 x rack (2 x 15mL Ø17mm)	5018.00	3363.00
F25025	FC5718R	Cell culture rotor package: swing out rotor (4 x 145mL), 2 x rack (1 x 50mL Ø29mm), 2 x rack (2 x 15mL Ø17mm)	8253.00	5530.00
F22038	FC5816	Cell culture rotor package: swing out rotor (4 x 290mL), 2 x screw cap rack (1 x 250mL Ø29mm), 2 x rack (3 x 50mL Ø29mm), 2 x rack (7 x 15mL Ø17mm)	6624.00	4439.00
F25026	FC5816R	Cell culture rotor package: swing out rotor (4 x 290mL), 2 x screw cap rack (1 x 250mL Ø29mm), 2 x rack (3 x 50mL Ø29mm), 2 x rack (7 x 15mL Ø17mm)	10122.00	6782.00
F22838	FC5916	Cell culture rotor package: swing out rotor (4 x 750mL), 2 x bucket with lid assembly (1 x 750mL Ø98mm), 2 x rack (7 x 50mL Ø29mm), 2 x rack (17 x 50mL Ø17mm)	9370.00	6278.00
F25027	FC5916R	Cell culture rotor package: swing out rotor (4 x 750mL), 2 x bucket with lid assembly (1 x 750mL Ø98mm), 2 x rack (7 x 50mL Ø29mm), 2 x rack (17 x 50mL Ø17mm)	12263.00	8217.00
F25028	FC5917RF	Cell culture rotor package: swing out rotor (4 x 1000mL), 2 x bucket with lid assembly (1 x 1000mL), 2 x rack (5 x 50mL Ø29mm), 2 x rack (12 x 15mL Ø17mm)	14375.00	9632.00
F25030	FC5917RF	Blood tubes rotor package: swing out rotor (4 x 1000mL), 2 x bucket with lid assembly (1 x 1000mL), 2 x rack (27 x 1.8/7mL Ø13mm vac/sar), 2 x rack (18 x 4/10mL Ø16mm vac/sar)	14375.00	9632.00



Benchmark myFuge™ Mini Centrifuge

2
YEARS

60%
OFF

Ideal for quick spin downs of microtubes and PCR tubes.

Includes: pre-installed eight-position microtube rotor, and rotor for 0.2mL PCR tubes and strips which is stored with the rotor removal key in a convenient compartment on the bottom of the centrifuge.

Code	Max Speed, RPM	Max RCF, x g	Dims, w x d x h, mm	List Price, £	Offer Price, £
F19444	6000	2000	145 x 178 x 114	375.00	150.00



Corning® LSE Mini Microcentrifuge

2 YEARS



33% OFF

Personal fixed speed benchtop instrument for quick spin downs of micro-samples. Features quick-release rotor system and electronic brake. **Includes:** 8 place rotor for 1.5/2.0mL microcentrifuge tubes, tube adapters, and strip tube rotor for 4 x 0.2mL tube strips.



Code	Max Speed, RPM	Max RCF, x g	Dims, w x d x h, mm	List Price, £	Offer Price, £
F151061T	6000	2000	148 x 174 x 122	228.00	153.00

IKA Lab Dancer Vortex Mixer

2 YEARS

Small, compact and reliable test tube shaker with a touch function.

- Designed for small sample tubes up to Ø 30mm
- Excellent mixing action



25% OFF

IKA®

Code	Speed, RPM	Orbit Size, mm	Dims, w x d x h, mm	List Price, £	Offer Price, £
F19196	2800	4	100 x 100 x 70	242.00	182.00

Benchmark Roto-Mini™ Plus Rotator

2 YEARS

Benchmark Scientific

Suitable for an array of laboratory applications including resuspension, protein binding, nucleic acid purification, etc. The motion can be adjusted from vertical (end over end) mixing, to horizontal (rolling or hybridisation style) mixing.

- Mix function: rotating in combination with oscillations (increased mixing)
- Pause function: rotating with intermittent stops during rotation
- Rock function: back and forth, gentle rocking motion (see-saw)
- **Includes:** 2 x tube holders for 11 x 1.5/2.0mL tubes, 2 x tube holders for 5 x 10/15mL tubes, 2 x tube holders for 5 x 5-7mL tubes, and 1 x tube holder for 6 x 50mL & 24 x 0.5mL tubes

57% OFF



Code	Speed Range, RPM	Dims, w x d x h, mm	List Price, £	Offer Price, £
F17180	5 to 70	410 x 137 x 199	596.00	259.00

Thermo Scientific™ Cimarec+™ 3 YEARS Hotplates and Stirrers

Thermo
SCIENTIFIC

Get exceptional safety and temperature performance and/or stirring control for your routine protocols.

- Stir-Trac features innovative engineering for slow-speed stirring, consistent speed control, and strong magnetic coupling
- Temperature adjustable in 1° increments
- Hot Top warning system when surface is above 50°C
- 7.25 x 7.25" ceramic top plate
- Easy-to-read LED display
- Raised display design protects electronics from spills

40%
OFF



Code	Description	Speed Range, RPM	Temp Range, °C	List Price, £	Offer Price, £
F25143	Hotplate	—	Ambient to 540	385.00	231.00
F25144	Stirrer	50 to 1500	—	328.00	197.00
F25145	Hotplate stirrer	50 to 1500	Ambient to 540	547.00	329.00

IKA Vortex 3 Mixer 2 YEARS

IKA®

Compact vortex shaker suitable for short-time operation (touch function), activated by pressing shaker attachment or continuous operation. With a wide, infinitely adjustable speed range.

- Sturdy metal zinc die cast casing
- Stable at high speeds
- Eccentric with ball bearings
- Suitable for continuous operation with low self heating thanks to self ventilation of motor
- Interchangeable attachments and inserts sold separately

21%
OFF



Code	Speed Range, RPM	Orbit Size, mm	Dims, w x d x h, mm	List Price, £	Offer Price, £
F18094	500 - 2500	4	127 x 149 x 136	468.00	368.00

IKA T 10 battery ULTRA-TURRAX Dispersers

2 YEARS NEW

IKA®

Battery-operated, cordless homogeniser designed for small volumes up to 100mL (H₂O). Ideal for on-site sampling or use in a cabinet due to its compact and portable design and the fact that it does not require an electricity supply. It is also ideal as a tissue homogeniser to break down complex tissues.

- Large TFT display for easy parameter viewing
- Brushless DC motor for quieter operation
- Precise speed setting with numerical values
- Timer and counter functions
- Rechargeable battery

40% OFF



Code	Description	Supplied with	List Price, £	Offer Price, £
F25032	T 10 battery	-	1460.00	883.00
F25033	T 10 battery portable solution	S 10 N - 5 G dispersing tool	2802.00	1684.00
F25034	T 10 battery complete solution	S 10 N - 5 G dispersing tool, H 44 boss head clamp, R 104 stand	3072.00	1846.00
F25035	T 10 battery tissue safe solution	S 10 D - 7G - KS - 65 dispersing tool (24 pcs)	1729.00	1046.00

Benchmark Pulse 150 Ultrasonic Homogeniser

2 YEARS

Benchmark Scientific

Ultrasonic homogeniser which uses cavitation and ultrasonic waves to break cells in suspension, shear DNA and prepare samples for ChIP assays. The unit processes samples from 0.1 to 150mL (with the appropriate horn). Operating parameters are set and viewed on the 4.3" colour touch screen, pulsed operation is easily programmed as is the power level.

- Twenty programs can be stored in memory
- Alarms alert the user to over temperature, over/no load and expiration of time
- Optional horns are available for other volumes
- **Includes:** controller, transducer, temperature probe, 6mm diameter titanium alloy horn (for volumes 10 to 100mL), wrenches, and soundproof box with sample platform

35% OFF



Code	Power, W	Frequency, kHz	Dims, w x d x h, mm	List Price, £	Offer Price, £
F151248	1.5 - 150	20 - 25	Controller 305 x 470 x 430; enclosure 350 x 350 x 550	3477.00	2261.00

Benchmark SureTemp™ Digital Ovens

2
YEARS

Benchmark
Scientific

Temperature range from ambient to 200°C with both accuracy and precision using digital control. Set the desired temperature and time and the oven will quickly reach the desired temperature using gravity convection for the set time while accurately monitoring the chamber temperature.

Continuous mode is also available for longer applications.

PID control provides automatic compensation after load changes or door opening.

- Double wall construction and 6 sided fiberglass insulation
- Sealed doors
- Stainless steel chamber
- In-lab calibration
- Large viewing window for live monitoring
- Stability as low as $\pm 0.5^{\circ}\text{C}$

42%
OFF



Code	Capacity, L	Ext Dims, w x d x h, mm	Int Dims, w x d x h, mm	List Price, £	Offer Price, £
F25163	30	425 x 482 x 610	325 x 310 x 315	1410.00	818.00
F25164	50	480 x 533 x 695	380 x 365 x 390	1735.00	1007.00
F25165	150	725 x 690 x 795	625 x 510 x 500	3149.00	1827.00

SLS Flowgen Incu-Shaker™ Shaking Incubators

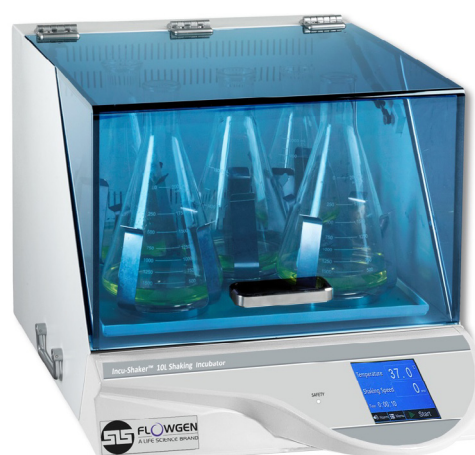
2
YEARS

SLS FLOWGEN

Provide digitally regulated temperature with precisely controlled, circular (orbital) mixing, optimised for the culture of a wide variety of cell types. The standard platform (included) features a non-slip, rubber coated surface, ideal for tissue culture flasks, Petri dishes and staining trays.

- Temperature, shaking speed and run time displayed
- Sophisticated over-temperature and over-speed
- Exceptional temperature uniformity
- Horizontally circular 19mm orbit
- Exchange flask clamps in one second with MAGic Clamp™ magnetic system (sold separately)

UP TO
59%
OFF



Code	Model	Temp Range, °C	Temp Uniformity, °C	Platform Dims, mm	Dims, w x d x h, mm	List Price, £	Offer Price, £
F14950	Mini	Ambient +5 to 70	± 0.5	235 x 292	280 x 480 x 330	5180.00	2100.00
F14960	10L	Ambient +5 to 60	± 1.0	450 x 450	510 x 650 x 470	8195.00	4650.00
F16530	10LR	Ambient -12 to 60	± 1.0	450 x 450	510 x 790 x 560	11581.00	6700.00

SLS Lab Pro Laboratory Incubators



Chamber manufactured from bright polish stainless steel lagged with high efficiency thermal insulation. Digital temperature control up to 80°C with program feature run back timer. Over temperature auto set and class 1 over temperature protection. Single insulated door with clear inner polycarbonate door, lockable with 2 point door engagement for an even seal, and door chime when left open.

- Anti-bacterial paint finish
- Temperature range ambient +5 to 80°C
- PID digital, LED display showing actual or set temperature, resolution 0.1°C
- Gravity natural convection
- Temperature sensor fail alarm with error reporting
- Shelf runners adjustable in 20mm steps vertically



Code	Capacity, L	Ext Dims, w x d x h, mm	Int Dims, w x d x h, mm	No. of Shelves	Shelf Positions	List Price, £	Offer Price, £
F16476T	60	600 x 605 x 720	400 x 400 x 360	2	5	2146.00	1695.00
F16478T	110	600 x 660 x 980	400 x 450 x 620	2	8	2738.00	2150.00
F16480T	250	800 x 720 x 1160	600 x 510 x 800	3	10	3619.00	2785.00

Benchmark BioClave™ 28 Research Autoclave



Despite the space-saving benchtop exterior dimensions, the stainless steel chamber is surprisingly large with a diameter of 32cm, capable of sterilising 1 and 2L flasks and bottles. Operation is fully automatic, meaning all segments of the cycle commence and run to completion by simply pressing the start button.

- Mechanical and electrical safety interlock that prevents the door opening until the pressure has reached zero PSI
- Preset cycle options or fully adjustable settings
- Large digital LCD display
- Built in water tank - no external connection needed
- USB port for transfer to a computer



Code	Chamber Capacity, L	Max. Pressure, PSI (bar)	Chamber Dims, Ø x d, mm	Ext Dims, w x d x h, mm	List Price, £	Offer Price, £
F21776	28	34.8 (2.4)	320 x 417	635 x 635 x 559	14528.00	7264.00

SLS Lab Pro Personal Autoclaves



Ideal for general laboratory use, and can be used for sterilising media (F21228T), glassware, and instruments. These autoclaves are easy to operate with simple one touch operation and fast cycle times. F21228T is designed with additional safety features for sterilising media.



- Lightweight and portable
- Sterilising temperatures ranging from 121 to 134°C



Code	Description	Max Temp, °C	Capacity, L	Chamber Dims, Ø x d, mm	List Price, £	Offer Price, £
F21224T	Standard autoclave	126	9	210 x 230	1111.00	755.00
F21226T	Autoclave with gauges	126	12	210 x 270	1471.00	1030.00
F21228T	Media autoclave	121	12	210 x 270	1361.00	995.00
F21230T	Autoclave with printer	134	9	210 x 230	1559.00	1100.00

Astell Compact Ecofill Autoclave



Energy efficient autoclave with pressure vessel design, which ensures the minimum amount of water is used, meaning low power consumption and quick heating and cooling. Featuring an integral reservoir and an in-built water recirculation system. Once filled, the reservoir provides water for up to 15 cycles, and acts as a collection vessel for condensate, the collected water is returned at the end of each cycle, minimising water usage.



- 316 stainless steel electropolished chamber
- Five pre-programmed cycles and up to 50 available
- Temperature range of 100 to 138°C (0.2 - 2.4 Bar)
- Fully programmable 5.7" colour touch screen controller
- USB interface for downloading controller data
- **Includes:** laboratory standard upgrade pack with fan cooling and load sensed process timing

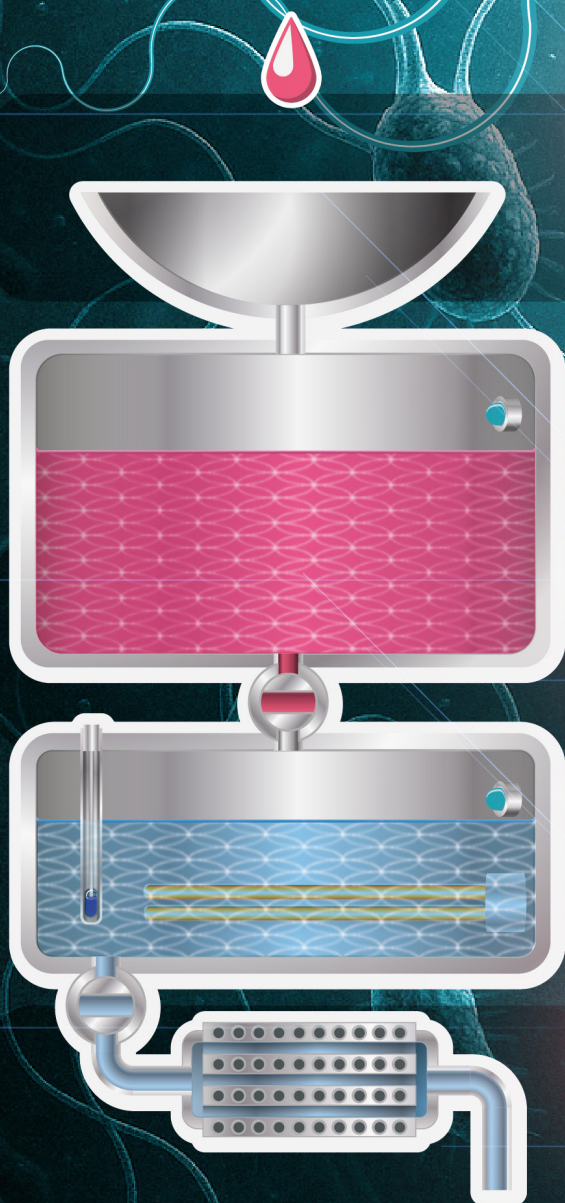


May incur an additional delivery charge

Code	Capacity, L	Chamber Dims, Ø x d, mm	Dims, w x d x h, mm	List Price, £	Offer Price, £
F13068	63	346 x 355	520 x 1005 x 600	14630.00	12436.00

**SAFER
SIMPLER
SUSTAINABLE
STERILIZATION
FOR LIQUID WASTE**

**ONLINE OFFER
SAVE £5,329.00
UNTIL 31ST MAY**



1

**POUR LIQUID
WASTE INTO
THE BASIN...**

2

**THE ASTELLBIO SINK
AUTOMATICALLY
AUTOCLAVES IT...**

3

**COOLS IT, AND DRAINS
IT INTO THE SEWER**



AstellBio SINK

a better way to sterilize liquid waste

SLS Select Glass Vials

Having the right containers for sample storage and analysis is crucial. These glass vials and bijous provide an excellent solution for storing, transporting, and handling a wide variety of samples, ensuring the accuracy and reliability of experimental outcomes.

See the SLS website for more offers!



Code	Description	Pack	List Price, £	Offer Price, £
F24652T	Screw neck vial, tall form, with polypropylene closure, 1.75mL	882	224.00	126.00
F24648T	Screw neck vial, tall form, with polypropylene closure, 7mL	399	154.00	75.00
F24108T	Bijou, with fitted aluminium cap, 7mL	288	182.00	112.00
F24686T	Bijou, with polypropylene cap, 7mL	1715	566.00	287.00
F24656T	Screw neck vial, tall form, with polypropylene closure, 10.5mL	399	153.00	80.00
F24644T	Screw neck vial, tall form, without closure, 14mL	264	109.00	57.00
F24662T	Screw neck vial, squat form, with polypropylene closure, 14mL	190	106.00	38.00
F24660T	Screw neck vial, squat form, with polypropylene closure, 28.2mL	140	103.00	37.60
F24106T	Universal vial, with fitted aluminium cap, 30mL	144	166.00	94.00
F24636T	Specimen tube, flat bottom, with push in polythene stopper, Ø x h: 12 x 50mm	100	39.10	14.00



Bijou/Universal,
White Cap



Bijou/Universal,
Aluminium Cap



Snap/Clip On,
Rolled Rim



Scintillation Vial,
With Fitted Cap



Push In



Screw Neck,
Squat Form

Vials: For Sampling, Storage, Testing and Diagnostics, Explore our collection of SLS Select Vials.

SLS Select Media Bottles



Perfect for everyday laboratory use and suitable for many applications, such as storage of culture media. Made from high quality borosilicate glass 3.3 to ISO 3585, and includes GL45 blue polypropylene cap and pouring ring.

- Heat and chemical resistant
- White graduations and marking spot
- Sloped shoulders for easy pour
- Standards to ISO 4796-1
- Autoclavable



Code	Capacity, mL	Dims, Ø x h, mm	Pack	List Price, £	Offer Price, £
F151342T	100	56 x 100	10	38.50	11.40
F151343T	250	70 x 138	10	46.80	13.50
F151344T	500	86 x 176	10	54.00	15.80
F151345T	1000	101 x 225	10	75.00	25.50
F151346T	2000	136 x 260	10	138.00	48.20
F151347T	5000	186 x 330	Each	149.00	52.00
F151348T	10000	234 x 410	Each	255.00	83.00
F151349T	20000	299 x 505	Each	390.00	137.00

Thermo Scientific™ Nalgene™ Erlenmeyer Flasks



Save preparation time and avoid contamination risk. Ideal for suspension of cell culture, media preparation, mixing, and storage. Crystal clear PETG is robust and break resistant, increasing personal safety.

- Sterile and single use for reduced contamination risk
- BPA-free
- Collapses when autoclaved, reducing biohazardous waste
- Graduated for quick volume assessment
- Vented closure



Code	Capacity, mL	Pack	List Price, £	Offer Price, £
F25076T	125	24	267.00	147.00
F25077T	250	12	146.00	81.00
F25078T	500	12	175.00	97.00
F25079T	1000	6	98.00	54.00
F25080T	2000	4	97.00	53.00
F25081T	2800	4	205.00	113.00

SLS Lab Basics Inverso TC100 Inverted Microscopes

1
YEAR

SLS LAB
BASICS

Robust enough to withstand the rigours of daily use and built to a high-quality specification. Ideally suited for multiple observation techniques and/or magnifications with a quintuple position nose-piece fitted as standard.

- Optical head: trinocular head inclined at 45°
- Eyepieces: 10x/20mm wide field
- Objectives: brightfield: 4x, 40x plan-achromatic LWD; phase contrast: 10x, 20x, 40x
- Condenser: NA 0.3, working distance 72mm (removable)
- Stage: 160 x 250mm with built-in mechanical stage and stage side extension
- Focusing: coaxial coarse and fine
- Illumination: LED, adjustable, with field diaphragm
- Epi-fluorescence module (F17204T only) adds blue excitation (460 - 490nm) and green excitation (480 - 550nm)

UP TO
46%
OFF



Code	Description	List Price, £	Offer Price, £
F151126T	Inverso TC100 inverted microscope	4253.00	2300.00
F17204T	Inverso TC100 inverted microscope with epi-fluorescence	11655.00	7000.00

SLS Lab Basics 5MP Tablet Microscope Camera

SLS LAB
BASICS

Tablet camera with a HD 9.7" colour LCD touchscreen. Equipped with software that allows the user to preview an image, set the white balance, capture images and videos, as well as having measurement and annotation capabilities.

- Integral C-mount fitting
- Keyboard/mouse can be used to operate
- Wi-Fi and Bluetooth wireless networking
- External 32GB SD memory card

54%
OFF



Code	CPU	Camera	List Price, £	Offer Price, £
F151127T	RK3066 dual-core 1.5Hz	15fps at 1024 x 768; 1/2.5 (4:3) 5MP CMOS	1647.00	750.00

Striking the ideal balance between inventive features and functional, uncomplicated weighing capabilities, the Adventurer™ incorporates all of the applications necessary for routine weighing and measurement activities.

- Three-level user management to fulfill GLP/GMP compliance capabilities
- Two USB ports
- Colour touchscreen, icon-based user interface, and ergonomic design
- Specialised weighing modes and multiple connectivity options provide versatility and flexibility
- Durable construction and large weighing surfaces
- AutoCal™ automatic internal calibration



See the SLS website for offers on external calibration and approved models!

Code	Model	Type	Capacity, g	Readability, mg	Pan Dims, mm	List Price, £	Offer Price, £
F23134	AX85	Semi-micro	82	0.01	Ø 80	4773.00	3151.00
F23136	AX125D	Semi-micro	82/120	0.01/0.1	Ø 80	4920.00	3248.00
F23138	AX225D	Semi-micro	102/220	0.01/0.1	Ø 80	5345.00	3528.00
F16030	AX124	Analytical	120	0.1	Ø 90	2955.00	1951.00
F16036	AX224	Analytical	220	0.1	Ø 90	3092.00	2041.00
F16042	AX324	Analytical	320	0.1	Ø 90	3120.00	2060.00
F16046	AX223	Precision	220	1	Ø 130	2090.00	1380.00
F16052	AX423	Precision	420	1	Ø 130	2310.00	1525.00
F16064	AX422	Precision	420	10	175 x 195	1686.00	1113.00
F16058	AX523	Precision	520	1	Ø 130	2745.00	1812.00
F23122	AX623	Precision	620	1	Ø 130	2745.00	1812.00
F16068	AX822	Precision	820	10	175 x 195	1875.00	1238.00
F16072	AX1502	Precision	1520	10	175 x 195	2070.00	1367.00
F16094	AX2201	Precision	2200	100	175 x 195	1607.00	1061.00
F16078	AX2202	Precision	2200	10	175 x 195	2105.00	1390.00
F16098	AX4201	Precision	4220	100	175 x 195	1870.00	1235.00
F16084	AX4202	Precision	4200	10	175 x 195	2265.00	1495.00
F16090	AX5202	Precision	5200	10	175 x 195	2745.00	1812.00
F23126	AX6202	Precision	6200	10	175 x 195	2745.00	1812.00
F16102	AX8201	Precision	8200	100	175 x 195	2050.00	1353.00
F23130	AX12001	Precision	12000	100	175 x 195	2150.00	1419.00

SLS Lab Pro SM Series Balances

5 YEARS



Fan-less, integrated, direct current ioniser eliminates static. The automatic response adjustment function is powered by the embedded sensors to deliver fast and stable results to compensate for environmental variables.

- GLP/GMP/GCP/ISO best practice compliance
- One-touch, full digital internal calibration with auto self-calibration (ASC)
- High contrast backlit LCD display
- Dual draft rings (SM-20 and SM-22)
- RS-232 and USB ports
- AD1688 data logger storages up to 5000 weighing results

UP TO
54%
OFF



Code	Model	Type	Capacity, g	Readability, mg	Pan Dims, mm	List Price, £	Offer Price, £
F14388T	SM-22	Micro	5.1/22	0.001/0.01	Ø 25	12202.00	6425.00
F14386T	SM-20	Micro	22	0.001	Ø 25	13748.00	7245.00
F14390T	SM-252	Semi-micro	250	0.01	Ø 90	6620.00	3499.00
F14392T	SM-200	Analytical	220	0.1	Ø 90	4339.00	1995.00
F14394T	SM-300	Analytical	320	0.1	Ø 90	4710.00	2485.00
F14396T	SM-500	Analytical	520	0.1	Ø 90	5045.00	2660.00

SLS Lab Pro A Series Analytical Balances

5 YEARS



Top-loading analytical balances with a compact footprint. The breeze break has rotary sliding doors that slide behind the balance and can be removed with one touch. Combined with the small footprint, this make the balances ideal for applications where space is at a premium.

- Reverse backlit LCD display for easy to read weighing results
- Statistical calculation function eliminates the need for a stats printer
- Standard RS-232C
- Fast, compact SHS sensor, response time ~2 seconds
- Pan dims: Ø 90mm

UP TO
56%
OFF



Code	Model	Capacity, g	Readability, mg	Calibration	List Price, £	Offer Price, £
F151336T	100AZ	102	0.1	Internal	1453.00	725.00
F151338T	100A	102	0.1	External	1132.00	590.00
F151340T	150AZ	152	0.1	Internal	1700.00	750.00
F151339T	150A	152	0.1	External	1385.00	650.00
F151337T	250AZ	252	0.1	Internal	1946.00	900.00
F151341T	250A	252	0.1	External	1578.00	750.00

SLS Lab Basics SJ Series Precision Balances

5 YEARS

LAB BASICS



Classic portable balance with a small footprint and lightweight design. Features include display hold, stability honing, gravity correction, accumulation M+ function, auto counting accuracy improvement (ACAI), and adjustable response characteristics.

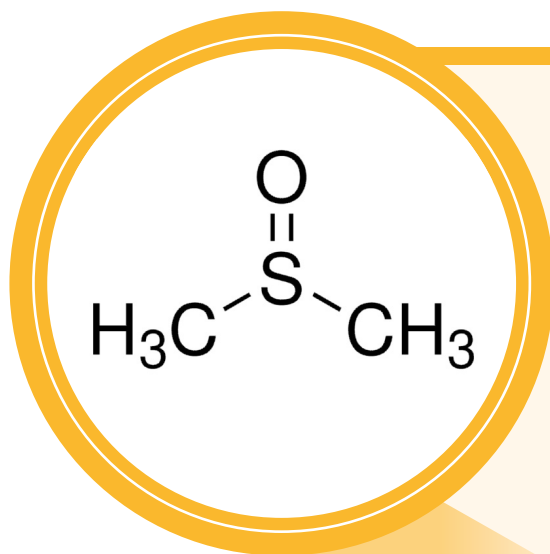
- Quick 5-button operation, user friendly indicators, and backlit LCD
- Stainless steel weigh pan, ABS plastic housing, and security slot for lock down capability
- AC and battery operation
- External calibration
- GLP/GMP/GCP/ISO compliant



42% OFF



Code	Model	Capacity, g	Readability, mg	Pan Dims, mm	List Price, £	Offer Price, £
F25179T	SJ-54D2	22/52	0.2/1	Ø 50	481.00	278.00
F25198T	SJ-123	120	1	Ø 110	351.00	203.00
F25200T	SJ-120	120	10	Ø 110	205.00	119.00
F25201T	SJ-200	210	10	Ø 110	223.00	129.00
F25118T	SJ-300	310	10	Ø 110	241.00	140.00
F25199T	SJ-303	320	1	Ø 110	389.00	225.00
F25202T	SJ-410	410	10	Ø 110	259.00	150.00
F25203T	SJ-610	610	10	Ø 110	277.00	160.00
F25204T	SJ-1202	1200	10	127 x 140	369.00	213.00
F25206T	SJ-1500	1500	100	127 x 140	205.00	119.00
F25207T	SJ-2000	2100	100	127 x 140	223.00	129.00
F25205T	SJ-3002	3100	10	127 x 140	426.00	246.00
F25119T	SJ-3000	3100	100	127 x 140	241.00	140.00
F25208T	SJ-4100	4100	100	127 x 140	259.00	150.00
F25209T	SJ-6100	6100	100	127 x 140	277.00	160.00



Sigma-Aldrich® Dimethyl Sulfoxide (DMSO)

Suitable for use with hybridoma cell lines.

Code	Description	Pack	List Price, £	Offer Price, £
F25106T	Hybri-Max™, 0.2µm filtered, BioReagent, ≥99.7%	5 x 10mL	171.00	95.00
F25107T	BioPerformance Certified, sterile-filtered, meets EP/USP testing specifications	5 x 10mL	171.00	95.00

44% OFF

Corning® CoolCell® Freezing Containers

CORNING

In combination with a -80°C freezer, provides alcohol-free freezing at the rate of -1°C/minute, ideal for cryopreservation of most cells and cell lines.

- Alcohol and fluid-free freezing
- High cell recovery and cell viability



OVER
24%
OFF

Code	Description	Capacity	Colour	Dims, Ø x h, mm	List Price, £	Offer Price, £
F19018T	CoolCell®	12 x 1/2mL cryogenic vials	Purple	117 x 109	153.00	114.00
F19492T	CoolCell® LX	12 x 1/2mL cryogenic vials	Green	117 x 99	192.00	143.00
F19494T	CoolCell® LX	12 x 1/2mL cryogenic vials	Orange	117 x 99	192.00	143.00
F19496T	CoolCell® LX	12 x 1/2mL cryogenic vials	Pink	117 x 99	192.00	143.00
F19010T	CoolCell® 5mL LX	12 x 3.5 - 5mL cryogenic vials	Purple	95 x 145	257.00	192.00

SLS Lab Pro Statebourne Biorack Storage Refrigerators

5 YEARS



35%
OFF



+ FREE
Roller Base

Highly efficient storage of bulk quantities of cryovials. Racking systems housed within these ultra-low loss cryogenic refrigerators enable users to store large quantities of biomedical material over long periods of time, safe in the knowledge that storage temperatures will be below -190°C even in the vapour phase.

- Advanced super insulation and ultra-high vacuum techniques
- Ultra-low evaporative losses
- Compatible with all major cryobox brands
- Heavy duty lockable enclosure offers excellent security
- **Includes:** racks, polycarbonate cryoboxes, and FREE roller base



May incur an additional delivery charge

Code	Model	LN ₂ Capacity, L	2mL Vial Capacity	Dims, h x Ø, mm	Supplied with	List Price, £	Offer Price, £
F19308T	Biorack 750	35	750	710 x 480	5 racks, 30 5x5 cryoboxes	3791.00	2470.00
F19312T	Biorack 3000	85	3000	738 x 646	6 racks, 30 10x10 cryoboxes	5765.00	3750.00
F19314T	Biorack 4800	131	4800	913 x 646	6 racks, 48 10x10 cryoboxes	7213.00	4715.00
F19316T	Biorack 6000	160	6000	1027 x 646	6 racks, 60 10x10 cryoboxes	7744.00	5072.00

ClearLine® BIOBased CryoGen® Cryotubes

Manufactured with at least 90% certified plastic from bio-based raw materials, with innovative screw caps to eliminate leakage and contamination. With unique and unrepeatable standard code 128 barcode, 2D tubes feature datamatrix code in the bottom, sequential and corresponding to the code 128 on the body.

- Storage temperature +4°C to liquid nitrogen vapour phase
- Sterile SAL 10⁻⁶
- Certified IATA PI650
- Free of human DNA, DNase, RNase, endotoxins, ATP and PCR inhibitors

UP TO
**22%
OFF**

ClearLine®



Code	Barcode	Capacity, mL	Bottom	Thread	Pack	List Price, £	Offer Price, £
F22700T	1D	1.2	Self standing	External	500	130.00	113.00
F22702T	1D	1.2	Self standing	Internal	500	130.00	102.00
F22706T	1D	2	Self standing	External	500	130.00	113.00
F22710T	1D	2	Self standing	Internal	500	130.00	113.00
F22712T	1D	2	Round	External	500	130.00	102.00
F22714T	1D	2	Round	Internal	500	130.00	102.00
F22716T	1D	3	Self standing	External	500	138.00	109.00
F22718T	1D	4	Self standing	External	500	151.00	118.00
F22720T	1D	4	Self standing	Internal	500	151.00	118.00
F22722T	1D	4	Round	Internal	500	151.00	118.00
F22726T	1D	5	Self standing	External	500	159.00	125.00
F22730T	1D	5	Self standing	Internal	500	159.00	125.00
F22732T	1D	5	Round	Internal	500	159.00	125.00
F22704T	2D	2	Self standing	External	500	500.00	392.00
F22708T	2D	2	Self standing	Internal	500	500.00	392.00
F22724T	2D	5	Self standing	External	500	500.00	392.00
F22728T	2D	5	Self standing	Internal	500	500.00	392.00



CryoStor® Cryopreservation Media

Cell-specific, optimised freeze media designed to prepare and preserve cells in ultra-low temperature environments during the freezing, storage, and thawing process.

UP TO
**46%
OFF**

Code	Description	Pack	List Price, £	Offer Price, £
F25105T	CS5	100mL	420.00	240.00
F25104T	CS10	100mL	447.00	240.00

Lec Medical Laboratory Essential Refrigerator and Freezer



Lec Medical have developed their range of laboratory fridges and freezers with reliability and ease of use in mind. Undercounter storage offers laboratories a simple way of refrigerating vital products, in a space-effective way.

- Integrated lock supplied with 2 keys for security and access control
- Spark free - items such as fans and lights removed so nothing in the interior has a risk of igniting flammable liquids
- Air temperature probe
- Solid door



Code	Model	Temp Range, °C	Capacity, L	Dims, w x d x h, mm	List Price, £	Offer Price, £
F22600	LSFSR110 refrigerator	2 to 10	158	595 x 600 x 850	490.00	320.00
F22604	LSFSF110 freezer	-18 to -25	98	595 x 660 x 850	490.00	320.00

Liebherr Performance Freezers



LIEBHERR

The perfect partner for your laboratory combining performance with temperature stability. Innovative safety features with monitoring and alarm functions offer comprehensive protection, and the one piece, robust polystyrene interior is quick and easy to clean. Self-closing door <90° with interchangeable door hinge, mechanical lock with two keys, and antibacterial lever handle.

- Temperature range: -9 to -30°C with fluctuation $\pm 5^{\circ}\text{C}$
- SmartFrost reduces frost build-up
- Calibration function
- Cleanroom compatible (DIN EN ISO 14644)
- Min/max temperature recording
- Power failure info
- Password secured function/control settings
- Spark-free models comply with ATEX Directive



May incur an additional delivery charge

Code	Description	Capacity, L	Dims, w x d x h, mm	List Price, £	Offer Price, £
F25061	SFFsg 4001 with shelves	316	597 x 654 x 1884	2179.00	1700.00
F24068	SFFfg 4001 spark-free with shelves	316	597 x 654 x 1884	2249.00	1755.00
F25062	SFFsg 4001 with drawers	316	597 x 654 x 1884	2379.00	1856.00
F24066	SFFfg 4001 spark-free with drawers	316	597 x 654 x 1884	2498.00	1950.00
F25063	SFFsg 5501 with shelves	499	747 x 769 x 1684	2569.00	2004.00
F24074	SFFfg 5501 spark-free with shelves	499	747 x 769 x 1684	2619.00	2043.00
F25064	SFFsg 5501 with drawers	499	747 x 769 x 1684	2769.00	2160.00
F24072	SFFfg 5501 spark-free with drawers	499	747 x 769 x 1684	2799.00	2184.00

Liebherr Perfection Laboratory Refrigerator and Freezer

2 YEARS

LIEBHERR

Offers the utmost in temperature stability, safety, and ease of use. Innovative functions protect sensitive substances in the event of faults, well-thought-out design facilitates cleaning, and high-quality components provide maximum efficiency. Features NoFrost technology making laborious defrosting a thing of the past, while innovative alarms and functions protect sensitive substances while they are being stored at consistently low temperatures.

- DIN 13277 compliant
- Integrated Wi-Fi/LAN interface
- Easy to clean interior
- Alarm relay
- Intuitive menu navigation
- Antibacterial lever handle

26% OFF



May incur an additional delivery charge

Code	Model	Temp Range, °C	Capacity, L	Dims, w x d x h, mm	List Price, £	Offer Price, £
F25065	SRTvh 1501 refrigerator	3 to 16	134	819 x 597 x 605	1749.00	1287.00
F25066	SFTvh 1501 freezer	-9 to -35	103	819 x 597 x 605	2121.00	1560.00

Thermo Scientific™ TSU Series Refrigerators

2 YEARS

Thermo SCIENTIFIC

A compelling underbench cold storage option for a wide variety of laboratories with a full suite of alarms, whisper quiet operation, and NSF 456 certified performance.

- Remote alarm contacts
- ENERGYStar certified
- Green refrigerants
- Hi/Lo temperature, door ajar, and power fail alarms
- Temperature range: 2 to 8°C
- Capacity: 127L

32% OFF



May incur an additional delivery charge

Code	Model	Door Style	Dims, w x d x h, mm	List Price, £	Offer Price, £
F25146	TSU405SW	Solid	520 x 650 x 830	3679.00	2502.00
F25147	TSU405GW	Glass	520 x 650 x 830	3703.00	2519.00

Grant Aqua Pro Shaking Water Baths



General-purpose thermostatically controlled orbital and linear shaking water baths. OLS26 is a combined orbital/linear shaking bath with advanced features for ultimate flexibility and usability, while LSB12 and LSB18 offer excellent usability for all general applications.

- Temperature range: ambient +5 to 99°C
- Stability: $\pm 0.1^{\circ}\text{C}$
- Shaking speed: 20 - 200 RPM
- Set and Forget™ technology
- Choice of trays sold separately
- Drain tap for convenient emptying
- **Includes:** polycarbonate lid and universal tray



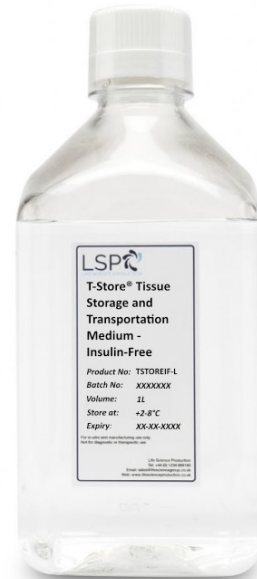
Code	Model	Capacity, L	Shaking Mode	Ext Dims, w x d x h, mm	Int Dims, w x d, mm	List Price, £	Offer Price, £
F151240	OLS26	26	Orbital & linear	325 x 565 x 335	380 x 235	3508.00	2667.00
F151241	LSB12	12	Linear	275 x 360 x 335	240 x 235	2502.00	1902.00
F151242	LSB18	18	Linear	275 x 595 x 335	420 x 235	2846.00	2163.00

LSP T-Store® Tissue Storage and Transportation Medium



An innovative, sterile, chemically defined and optimised media developed to provide a stable storage and shipping environment for mammalian tissue samples. Designed to maintain the integrity of tissue samples, thereby reducing necrosis and apoptosis.

- Robust buffering system, allowing use over a wide temperature range
- Isosmotic, isotonic and isoionic with human serum and interstitial fluid
- Acid-base (pH) balance of tissues is maintained



Code	Description	Pack	List Price, £	Offer Price, £
F25012	T-Store®	50mL	63.00	41.30
F25010	T-Store®	100mL	87.00	63.00
F25016	T-Store®	125mL	126.00	84.00
F25009	T-Store®	500mL	537.00	361.00
F25014	T-Store®	1000mL	880.00	593.00
F25011	T-Store® with antibiotic	100mL	158.00	125.00
F25015	T-Store® with antibiotic	1000mL	1003.00	676.00



LSP Bovine Serum Albumin (BSA)

Protease free, low endotoxin. US origin.

UP TO
35% OFF

Code	Pack	List Price, £	Offer Price, £
F25022	100g	207.00	170.00
F25023	1kg	1019.00	685.00
F25024	5kg	4217.00	2737.00

LSP CellShip® Cell Transport Medium

Fully defined, xeno-free cell transportation medium. A simple and low-cost way to transport or store mammalian cell lines at ambient temperatures.

- Requires minimal cell manipulation
- Alternative to cryopreservation

UP TO
45% OFF



LSP
LIFE SCIENCE PRODUCTION



Code	Description	Pack	List Price, £	Offer Price, £
F25021	CellShip®	25mL	54.00	31.00
F25020	CellShip®	50mL	66.00	41.30
F25018	CellShip®	100mL	141.00	78.00
F25019	CellShip® with antibiotic	100mL	141.00	78.00

Cerillo Mammalian Duet Co-Culture System

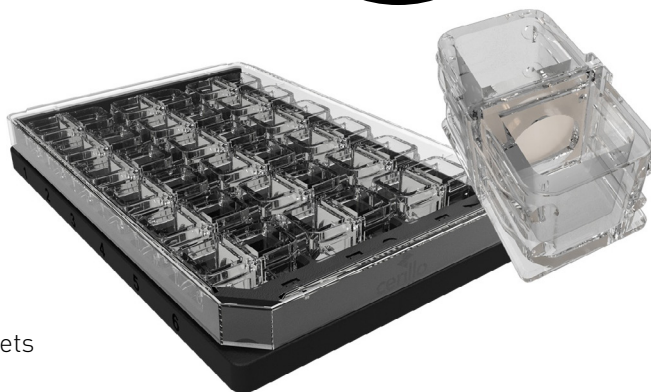
NEW

25% OFF

cerillo
illuminate possibility

The Duet Co-Culture's porous barrier physically isolates populations while maintaining fluidic contact. For eukaryotic cellular interactions, mammalian co-culture experiments in an easy, ready-to-use system for complete experimental flexibility.

- Plasma etching on bottom of duet for cell adhesion
- Uses same 0.2µm membranes as microbial Duets
- 18 removable Duets per tray
- Trays can be mixed with other duet types for experimental flexibility
- Automation friendly
- **Includes:** frame, lid, and 18 x 0.2µm plasma-etched Duets



Code	List Price, £	Offer Price, £
F25142T	440.00	330.00

Cerillo Rayo Microplate Absorbance Readers NEW



You can now have the full range of discovery options with Cerillo's next-generation multiwavelength microplate reader - precision, speed, and versatility in every assay.

- 10x smaller than traditional competitors
- Operates within most environments
- Continuously collect unlimited data points
- Kinetic and endpoint measurements
- Multiple models to fit user needs
- Control screen with buttons on front of hardware

25%
OFF



Code	Model	Wavelength, nm	List Price, £	Offer Price, £
F25140T	Rayo S600	600	5642.00	4250.00
F25141T	Rayo	405, 450, 590, 740	10265.00	7700.00

Accuris SmartReader™ 96 Microplate Absorbance Reader with Incubation 2 YEARS



A convenient stand alone reader with a 7" touch screen, intuitive software and graphical interface. Offers precise temperature control for incubation of plates during processing.

- 8 channel vertical optical path, with zero dispersion
- Integrated, multi-speed plate shaker
- USB port allows quick and easy saving of data files to a USB drive
- Data port can be used for connecting a computer or basic printer
- Complete with 4 popular filters: 405, 450, 492 and 630nm, additional filters available separately

48%
OFF



Code	Absorbance Range, A	Wavelength Range, nm	Incubator Temp Range, °C	Dims, w x d x h, mm	List Price, £	Offer Price, £
F16194	0 - 4.000	340 - 750	Ambient +5 to 50	295 x 440 x 225	7868.00	4099.00

Accuris SmartWasher™ 96 Microplate Washer

2
YEARS

Benchmark
Scientific

Automates the process of ELISA plate washing so assays can be prepared quickly and accurately. Accepts full plates, partial plates, and strips with U, V, C, or flat bottoms. Parameters easily programmed with the 4.3" LCD display and keypad.

- Up to 100 wash protocols customised, stored, and transferred via flash drive
- 1 rinse, 1 waste, and 2 wash bottles
- Liquid level sensors in wash/waste bottles
- Auto rinse function
- Control of aspiration needle position accurate to 0.1mm
- Minimal residual liquid, $\leq 1\mu\text{L}/\text{well}$
- 8/12 channel manifolds (sold separately) accommodate plates in either orientation



46%
OFF

Code	Dims, w x d x h, mm	List Price, £	Offer Price, £
F151254	345 x 460 x 200	5782.00	3129.00

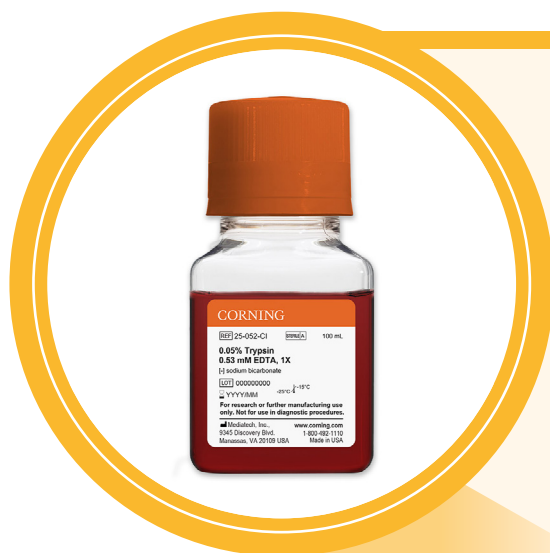
Corning® Buffered Salt Solutions

CORNING

Code	Description	Pack	List Price, £	Offer Price, £
F22020T	HBSS, 1x without calcium and magnesium	6 x 500mL	122.00	33.70
F22022T	HBSS, 1x without calcium, magnesium, and phenol red	6 x 500mL	81.00	27.20
F22024T	DPBS, 1x with calcium and magnesium	6 x 500mL	58.00	25.90
F22026T	DPBS, 1x without calcium and magnesium	6 x 500mL	52.00	22.50
F23000T	PBS, 1x without calcium and magnesium	6 x 500mL	53.00	21.70
F23002T	PBS, 1x without calcium and magnesium	6 x 1L	94.00	47.70



UP TO
72%
OFF



Corning® Cell Dissociation Reagents

UP TO
66%
OFF

Code	Description	Pack	List Price, £	Offer Price, £
F23004T	Trypsin EDTA 1x	6 x 100mL	65.00	26.60
F23006T	Trypsin EDTA 1x	6 x 500mL	232.00	80.00
F23008T	Cellstripper™, liquid	6 x 100mL	105.00	49.90
F23010T	Accutase® cell detachment solution, liquid	100mL	44.50	30.20

Thermo Scientific™ Nunc™ Nunclon™ Supra Cultureware

Thermo
SCIENTIFIC

Culture fastidious adherent cells with Nunclon™ Supra surface treatment.

- Intended for general cell culture applications
- The surface is more hydrophilic than the Nunclon™ Delta surface
- Enhances the growth of finicky cell types under no/low-serum conditions

**45%
OFF**



Code	Description	Pack	List Price, £	Offer Price, £
F23090T	6 well multidish	75	336.00	185.00
F23092T	12 well multidish	75	356.00	196.00
F23094T	24 well multidish	75	352.00	194.00
F23096T	48 well multidish	75	411.00	227.00
F23114T	96 well microplate with lid	50	247.00	136.00
F23098T	35 x 13mm EasYDish™	500	397.00	219.00
F23100T	60 x 16mm EasYDish™	280	229.00	126.00
F23102T	100 x 17mm EasYDish™	150	219.00	121.00
F23104T	100 x 21mm EasYDish™	240	327.00	180.00
F23106T	150 x 21mm EasYDish™	80	300.00	165.00
F23108T	25cm ² EasYFlask™ with filter closure	200	405.00	223.00
F25073T	25cm ² EasYFlask™ with solid closure	200	401.00	221.00
F23110T	75cm ² EasYFlask™ with filter closure	100	343.00	189.00
F25074T	75cm ² EasYFlask™ with solid closure	100	331.00	183.00
F23112T	175cm ² EasYFlask™ with filter closure	30	186.00	103.00
F25075T	175cm ² EasYFlask™ with solid closure	30	182.00	101.00



Cytiva HyClone™ Cell Culture Media

UP TO
**57%
OFF**

Code	Description	Pack	List Price, £	Offer Price, £
F25102T	SFM4CHO with L-glutamine	1L	57.00	39.00
F25103T	CDM4CHO without L-glutamine	1L	105.00	45.00



SPECIAL PRICE

PYREX® Baffled Culture Flasks

Made from 3.3 expansion borosilicate glass with four equidistant baffles to provide consistent agitation when used with compatible orbital shakers. Ideal for use in preparation of cultures.

Code	Capacity, mL	Pack	Offer Price, £
F14050	250	5	55.00
F14052	500	5	66.00
F14054	1000	2	66.00
F14056	2000	Each	44.00

RWD Life Science C100 Automated Cell Counters

1 YEAR

RWD

Combining highly intelligent software with excellent microscopy optics structure, the automated cell counter can identify both live and dead cells. Information such as cell counts, viability and diameter can be obtained with just one click. With the fluorescence cube (sold separately), images can be displayed in BF and FL channels simultaneously and present cell counts and cell morphology (C100 model only).

It is an optimal device to analyse cell viability and transfection efficiency in immunology and vaccine development, cell therapy, tumor research, stem cell, metabolism research, and others.

- Smart cell recognition
- Fast cell counting in 9 seconds
- Touchscreen with built-in user guide interfaces ensures easy operation
- Compact design
- Removable modular FL cubes allow easy switches among various scenes (C100 only)

35% OFF



Code	Model	List Price, £	Offer Price, £
F23012T	C100-SE	3304.00	2155.00
F22232	C100	4321.00	2820.00

Cell Counting Slides

Code	Pack	List Price, £	Offer Price, £
F24154	50	58.00	40.20

31% OFF

OwiBio PCR Reagents



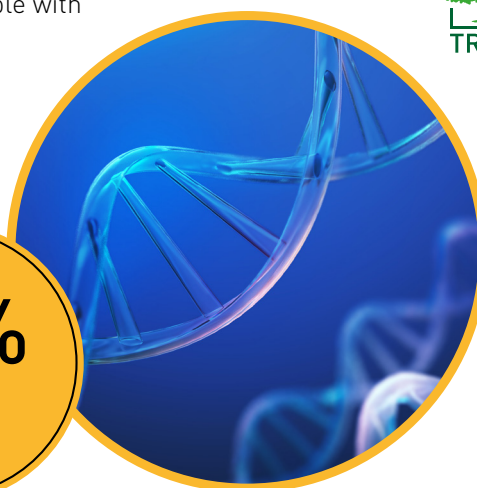
Code	Description	Pack	List Price, £	Offer Price, £
F25084T	Taq master mix, ready to load	1mL, 40 reactions (50uL)	14.46	11.57
F25087T	Taq master mix, ready to load	5mL, 200 reactions (50uL)	47.01	37.70
F25094T	Taq master mix, ready to load	5 x 5mL, 1000 reactions (50µL)	212.00	170.00
F25088T	Taq hot start master mix, ready to load	2 x 1.25mL, 100 reactions (50µL)	61.59	49.30
F25097T	Taq hot start master mix, ready to load	10 x 1.25mL, 500 reactions (50µL)	266.00	213.00
F25098T	Taq hot start master mix, ready to load	20 x 1.25mL, 1000 reactions (50µL)	479.00	384.00
F25092T	AptaFi hot start master mix	2 x 1.25mL, 100 reactions (50µL)	158.00	127.00
F25099T	AptaFi hot start master mix	10 x 1.25mL, 500 reactions (50µL)	645.00	516.00
F25085T	dNTP mix, 40mM (10mM dATP, dCTP, dGTP and dTTP)	1mL	44.45	35.60
F25093T	Green FAST qPCR premix	5mL, 500 reactions (20µL)	187.00	150.00
F25100T	Green FAST qPCR premix	5 x 5mL, 2500 reactions (20µL)	650.00	520.00
F25096T	Script reverse transcriptase UltraMix with gDNA CleanUp for qPCR	100 reactions (20µL)	240.00	192.00

Meridian Bioscience Liquid Stable DNA qPCR Mixes



Liquid Stable Flex DNA qPCR mix is a high-performance, 5x liquid master mix that delivers consistent, reliable results. Supplied without primers and probes, it gives end-users the freedom to add their own oligos at the point of use. Its liquid, ready-to-use format is fully compatible with manual pipetting and automated liquid handling. Liquid Stable Ready DNA qPCR mix is a high-concentration, 5x liquid ambient-stable master mix that delivers consistent amplification performance throughout its entire shelf life, even under fast cycling and multiplex conditions. No refrigeration, lyophilisation, or rehydration required.

- 12 month ambient stability
- Cold chain not required - reduces energy use, packaging waste and temperature-controlled shipping requirements



Code	Description	Pack	List Price, £	Offer Price, £
F25067	Liquid Stable Flex DNA qPCR mix	200 reactions	201.00	169.00
F25068	Liquid Stable Flex DNA qPCR mix	1000 reactions	870.00	733.00
F25069	Liquid Stable Flex DNA qPCR mix	10000 reactions	7259.00	6110.00
F25070	Liquid Stable Ready DNA qPCR mix	200 reactions	210.00	177.00
F25071	Liquid Stable Ready DNA qPCR mix	1000 reactions	884.00	744.00
F25072	Liquid Stable Ready DNA qPCR mix	10000 reactions	7331.00	6171.00

NIPPON Genetics EUROPE FastGene® qFYR Real-Time PCR Systems

1 YEAR



NIPPON Genetics EUROPE
INNOVATION FOR YOU

High-precision qPCR instrument ensures sensitive detection and accurate quantification of DNA and RNA. Built to the highest standards, it delivers reliable performance for a wide range of applications. An outstanding level of sensitivity and virtually no cross talk between wells due to the small distance between the scanning head and the plate. 4 or 6 different colour channels are installed in the scanning head to be able to excite all commonly used qPCR dyes in a single plate scan (8 seconds).

- High sensitivity optical design
- Excellent temperature control, precision ($\pm 0.2^{\circ}\text{C}$), and uniformity over the entire plate
- Powerful included analysis software
- Accurate quantification
- 1.3-fold target discrimination
- Melt curve analysis
- Gradient qPCR for optimal annealing

UP TO
22%
OFF



Code	Description	List Price, £	Offer Price, £
F25001	FastGene® qFYR 4+1 channel system: 4 different colour channels and 1 second FAM channel	21750.00	17948.00
F25002	FastGene® qFYR Plus 6 channel system: 6 different colour channels	24750.00	19340.00

NIPPON Genetics EUROPE FastGene® Ultra Cycler Gradient Thermal Cycler

1 YEAR



NIPPON Genetics EUROPE
INNOVATION FOR YOU

96 well PCR instrument with a gradient, a thermal gradient of up to 24°C can be precisely generated, the temperature of each well is stable and reliably repeatable from cycle to cycle. The fully adjustable heated lid is compatible with a wide range of 0.2mL PCR tubes (standard and low profile) and 96 well PCR microplates (fully-skirted, semi-skirted, and non-skirted). With a huge touchscreen interface and simple programming, this system is convenient and easy-to-use.

- Very fast ramp rates for a quick PCR
- Precision composite alloy block with low mass and high thermal conductivity provides excellent ramp rates, long peltier life and low well to well temperature variation
- USB connectivity for fast, easy file transfer to USB memory stick

23%
OFF



Code	Temp Range, $^{\circ}\text{C}$	Temp Accuracy, $^{\circ}\text{C}$	Heating/Cooling Rate, $^{\circ}\text{C}/\text{sec}$	List Price, £	Offer Price, £
F25004	4 to 99	± 0.5 over full range, typically $< \pm 0.1$ at 60	5 between denat & anneal (block)	4514.00	3479.00

Blue-Ray Biotech TurboCyclers

2 YEARS

BLUE-RAY BIOTECH

The TurboCycler Lite thermal cycler is economical and versatile, making it an ideal choice for routine PCR tasks. The TurboCycler 2 provides outstanding performance with the most flexibility, designed specifically to enhance PCR efficiency and accuracy. The TurboCycler 3 is ideal for high-throughput PCR for multi-user, multi-condition labs, allowing you to run 3 independent experiments simultaneously.

- Easy to control, intuitive operation experience
- Gradient optimisation
- Fully adjustable lid temperature
- Lite model has physical button driven interface, 2 and 3 models have intuitive touch interface touch screens

UP TO
18% OFF



Code	Model	Capacity	Heating Rate, °C/sec	Adjustable Ramp Rate	Temp Uniformity, °C	List Price, £	Offer Price, £
F16288	Lite	96 well, 0.2/0.1mL	3	0.1 - 5.0°C/sec	±0.5	2992.00	2497.00
F16286	2	96 well, 0.2/0.1mL	5.5	0.1 - 5.5°C/sec	±0.3	4161.00	3400.00
F23054	3	3 x 48 x 0.2/0.1mL (independent control)	5	High/low	±0.4	6424.00	5400.00

Blue-Ray Biotech EzDrop Spectrophotometers

2 YEARS

BLUE-RAY BIOTECH

Delivers rapid results within 3 seconds and helps you make the most of your samples and time, perfect for daily routine acid and protein quantification. Choose either the microvolume or cuvette mode (EzDrop 1000C only) and benefit from dynamic full spectrum 190 to 1000nm detection. Use as a standalone unit or connect to a PC for flexible sample-to-date processing.

- Intuitive 7" touchscreen
- Flexible data management
- In microvolume mode, only 1µL of undiluted sample is needed, with a nano-hydrophobic window, a cushioned detection arm, an assist light to prevent placement errors, and no routine calibration required
- Cuvette mode (EzDrop 1000C only) has built in 37 to 45°C temperature control and stir functions

UP TO
28% OFF



Code	Model	Sample Type	Low Detection Limit (dsDNA)	List Price, £	Offer Price, £
F18354	1000	Microvolume	2ng/µL	7241.00	5200.00
F22788	1000C	Microvolume and cuvette	2ng/µL (micro), 0.3ng/µL (cuvette)	7981.00	6300.00

Accuris SmartDrop™ X Nano Spectrophotometer

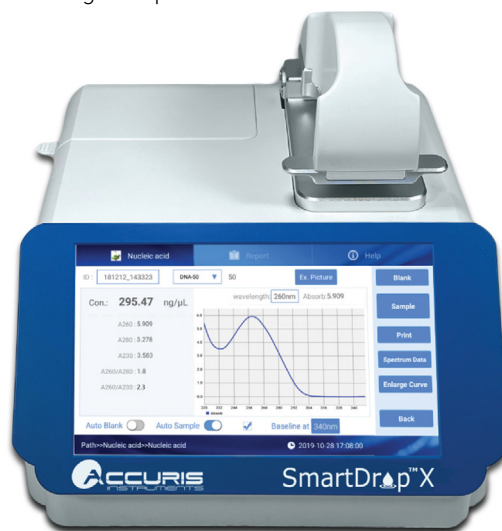
2 YEARS

Benchmark Scientific

Requires only 0.5 to 2.0µL of sample, utilising a small sample volume eliminates the need for dilutions, providing more accurate results. In addition to nucleic acid and protein calculations, the software has preset programs for BCA, Bradford and Lowry assays. A full spectrum analysis can be performed in about 6 seconds, up to 5 specific points on the spectrum can be selected for colorimetric readings output. The long life xenon lamp source requires no warm up and is paired with a highly sensitive CCD detector.

- Quickly calculates and displays 260/280 and 260/230 ratios
- Detects up to 4500ng/µL of dsDNA without dilution
- Data can be printed using the integrated printer, saved in the onboard memory or exported via USB
- Full colour, 7" touchscreen

48% OFF



Code	Sample Volume, µL	Path Length, mm	Wavelength Range, nm	Dims, w x d x h, mm	List Price, £	Offer Price, £
F20002	0.5 - 2.0	0.2, 1.0	200 - 800	210 x 268 x 181	14857.00	7760.00

Accuris Smart-Q™ 100 Quantitative Fluorometer

2 YEARS

Benchmark Scientific

Offers fast and accurate quantitation of DNA, RNA and protein samples using the well-established method of fluorescence detection. This method is highly specific and provides higher accuracy than UV absorbance quantitation. Each instrument features a large 7" colour touch screen and an intuitive, icon-driven user interface. Results are quickly calculated and displayed in less than 6 seconds, and saved to the instrument's internal memory. All data can be also be exported easily to a PC using a flash drive.

- Sensitive quantitation down to 0.1pg/µL dsDNA
- Large colour touch screen for programming and operation
- Built-in reagent calculators to assess workflow calculations
- Single-sample processing in 0.5mL assay tubes

28% OFF



Code	Excitation Wavelength, nm	Emission Wavelength, nm	Dims, w x d x h, mm	List Price, £	Offer Price, £
F22002	Blue: 460 ±20, red: 625 ±20	Green: 525 - 570, red: 670 - 725	161 x 287 x 61	3738.00	2692.00

NIPPON Genetics EUROPE MIDORIGreen DNA/RNA Stains



NIPPON Genetics EUROPE
INNOVATION FOR YOU

MIDORI^{Green} dyes offers a perfect solution for different staining preparation or gel documentation conditions. Non-carcinogenic and non-toxic, MIDORI^{Green} is a safe alternatives to the traditional nucleic acid stain ethidium bromide.



- Advance: For detecting dsDNA, ssDNA and RNA in agarose gels with a very high sensitivity. For in-gel staining and post staining. Optimal for UV light.
- Xtra: Ultra-sensitive DNA stain for the detection of DNA/RNA in agarose gels. For in-gel staining and post staining. Optimal for blue/green LED technology and blue LED light.
- Direct: In-sample staining for the strongest signal. Added directly to your samples, with the loading dye already included. No other reagents need to be added. Developed for visible light, and the best signal quality can be achieved with blue/green LED technology.

Code	Description	Pack	List Price, £	Offer Price, £
F25005	MIDORI ^{Green} Advance	1mL (25000x for staining 25L of agarose)	87.00	63.00
F25006	MIDORI ^{Green} Direct	1mL (25000x for staining 25L of agarose)	90.00	64.00
F25007	MIDORI ^{Green} Xtra	1mL (10x for direct use in sample)	103.00	70.00

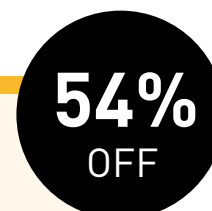
OwiBio Electrophoresis Reagents



Code	Description	Pack	List Price, £	Offer Price, £
F25089T	EmeraldDye safe DNA stain	250 gels (1mL)	95.40	77.00
F25086T	ExactLadder [®] DNA 100bp, ready to load ladder marker	100 lanes (500µL)	45.29	36.30



SLS Flowgen Agarose



Code	Description	Pack	List Price, £	Offer Price, £
F24476T	Standard agarose	500g	208.00	95.00
F24474T	Low EEO agarose	500g	229.00	105.00

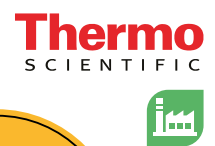


Corning® Sterile Molecular Biology Grade Water

UP TO
63% OFF

Code	Pack	List Price, £	Offer Price, £
F151055T	6 x 100mL	71.00	26.30
F151056T	6 x 500mL	124.00	70.00

Thermo Scientific™ Nalgene™ Rapid-Flow™ Bottle Top Filters and Filter Units



Featuring the exclusive Rapid-Flow™ support column design, providing fast flow rates and high throughput for increased filtration efficiency. The last line of defense against cell culture contamination - the best choice for the filtration of cell culture media, serum, additives and buffers.

- Fastest flow rate and lowest clogging
- Non-pyrogenic and endotoxin free
- Sterile and disposable

See the SLS website for offers on other membranes and volumes!



45% OFF



PES Membrane Filter Units

Code	Capacity, mL	Pore Size, µm	Membrane Ø, mm	Pack	List Price, £	Offer Price, £
F25039T	500	0.1	75	12	211.00	117.00
F25040T	500	0.2	75	12	215.00	119.00
F25041T	500	0.2	90	12	254.00	140.00
F25037T	500	0.45	75	12	230.00	127.00
F25038T	500	0.45	90	12	273.00	151.00

PES Membrane Bottle Top Filters

Code	Capacity, mL	Pore Size, µm	Neck Ø, mm	Pack	List Price, £	Offer Price, £
F19588T	500	0.2	33	12	126.00	69.00
F19590T	500	0.2	45	12	124.00	68.00
F19592T	500	0.45	33	12	136.00	75.00
F19594T	500	0.45	45	12	134.00	74.00



Cytiva HyClone™ Bovine Growth Serum (BGS)

US origin, heat-inactivated.

9% OFF

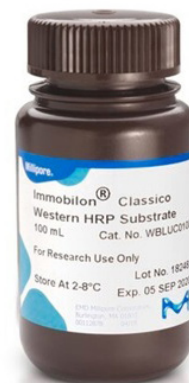
Code	Pack	List Price, £	Offer Price, £
F25101T	500mL	127.00	115.00

Millipore® Immobilon® Western Blotting Reagents & Membranes

Millipore®
Preparation, Separation,
Filtration & Monitoring Products

Code	Description	Pack	List Price, £	Offer Price, £
F25108T	Immobilon® Classico western HRP substrate	100mL	105.00	95.00
F25109T	Immobilon® Crescendo western HRP substrate	100mL	125.00	113.00
F25110T	Immobilon® Forte western HRP substrate	100mL	160.00	144.00
F25111T	Immobilon® western chemiluminescent HRP substrate	2 x 50mL	145.00	131.00
F25112T	Immobilon® ECL Ultra western HRP substrate	2 x 50mL	239.00	216.00
F25113T	Immobilon®-E PVDF membrane, 7 x 8.4cm, 0.45µm	50 sheets	452.00	409.00
F25114T	Immobilon®-P PVDF membrane, 7 x 8.4cm, 0.45µm	50 sheets	464.00	419.00
F25115T	Immobilon®-PSQ PVDF membrane, 7 x 8.4cm, 0.2µm	50 sheets	457.00	413.00
F25116T	Immobilon®-FL PVDF membrane, 7 x 8.4cm, 0.45µm	10 sheets	99.50	90.00
F25117T	Immobilon® blotting filter paper; 8.5 x 13.5cm	100 sheets	129.00	116.00

10% OFF



Thermo Scientific™ Nalgene™ 5L Shake Flasks

Faceted-bottom flask supports culture of a wide variety of cell types. Angled-bottom flask is designed to support scale-up of sensitive cell types and transient transfection with the ExpiCHO Expression System.

- Vented cap
- Clear PETG
- Sterile



45% OFF

Thermo
SCIENTIFIC

Code	Bottom	Pack	List Price, £	Offer Price, £
F25082T	Angled	4	588.00	324.00
F25083T	Faceted	4	390.00	215.00

Uvitec Uvidoc HD6 TOUCH-PLUS Package

3
YEARS

UVITEC
CAMBRIDGE

Unique stand-alone platform and voice-controlled DNA/protein gel workstation, ideal for labs requiring automation, ease of use and high-sensitivity. Boasting real on-board computer and large 12.2" touch screen.

- 1-touch to image
- Fully slide-out tray
- Large 26 x 21cm FOV
- SafeLight 470nm table: enhanced blue LED lights for all your safe dyes
- 3-position filter wheel, up to 18 filters to choose from
- 100% adjustable parameters and protocols
- Up to 10MP resolution, 16-bit camera, 65,535 grey levels
- Passive cooling for reduced noise



- **Package includes:** Uvidoc HD6T TOUCH-PLUS (without box), SafeLight-Box 20-blue Q9 (Plus) transilluminator (blue 470nm, filter size 20 x 20cm, 100 - 230V), F-999 M58 SafeLight narrow bandpass filter with hard coating OD6, and power cord



Code

F25137

Offer Price, £

6686.00

Uvitec Alliance IRIS Package

3
YEARS

UVITEC
CAMBRIDGE

Top end and latest imaging system for chemiluminescence and fluorescence Western blots. Highest optic sensitivity with an aperture of f/0.75, wide 15.6" touchscreen, full automation, and strong innovative features for unmatched precision and detection.

- All in one system: 1-click to image
 - Up to 30MP: 9.2MP native camera resolution, f/0.75 custom lens, 3 stages peltier cooling, OD 4.8 dynamic range
 - UV 312nm table: revolutionary 312nm UV pads using LED
 - Chromascan concept: homogeneous fluorescent excitation light
 - Interchangeable pads: no conversion screens, different pads for each your applications (white, blue, UV, chemi)
 - DeepEye: Intelligent software with automatic DeepLearning* analysis
 - Multiplexing: imaging of several proteins
 - Standalone system with integrated PC (Windows operating)
 - **Package includes:** Alliance IRIS (lens: motorised, panoramic f/0.75 lens), IRIS DeepEye licence software, F-590 S27 UV filter, UVIpure-IRIS UV table, and power cord
- *Patent pending final approval



Code

F25130

Offer Price, £

20489.00

IKA RV 8 V Rotary Evaporator Starter Solution

2+ YEARS

IKA®

The complete package for your rotary evaporator setup. In addition to the RV 8 V rotary evaporator, the package includes the HB digital heating bath with a capacity of 4L and a heating temperature range of RT to 180°C, a highly efficient vertical glass condenser set with 1L receiver and evaporator flask, as well as the the VACSTAR lite vacuum pump with VC 10 lite vacuum controller and the RC 2 lite recirculating chiller.

- All components and connections required for operation are included
- **Includes:** RV 8 FLEX rotary evaporator, RV 10.1 glassware vertical, VC 10 lite vacuum controller, RV 8.3 stand pole, VACSTAR lite vacuum pump, RC 2 lite recirculating chiller, RV 10.5005 set of hoses, and PC 1.3 cable



20% OFF

Code	List Price, £	Offer Price, £
F25036	7643.00	6115.00

KNF LABOPORT® SC 820 G Vacuum Pump System

2 YEARS



Chemically-resistant vacuum pump system. Ideal for rotary evaporation and other applications where control of vacuum level is important.

- Automatic, accurate recognition and monitoring of the boiling point using the integrated ramp function
- High recovery rates even with low boiling point solvents
- Remote-controlled for safe operation from outside closed fume hoods
- ATEX compliant to (Ex) II 3/-G Ex h IIB+H2 T3 Gc internal atmosphere only
- **Includes:** diaphragm vacuum pump, base plate, separator on suction side, high performance condenser on pressure side, and vacuum controller



20% OFF

Code	Max Flow Rate, L/min	Ultimate Vacuum, mbar	List Price, £	Offer Price, £
F21128	20	6	5363.00	4290.00



LABORATORY PUMPS AND SYSTEMS

UNIQUE DESIGN FOR LAB LIFE LABOPORT® VACUUM PUMPS

Modular and expandable

The laboratory vacuum pump system guarantees maximum performance and safety in the laboratory, tailored to your individual needs: The powerful basic pump can be easily modified to an even higher environmentally friendly system. Various system components such as a separator, high-performance condenser and the remote vacuum controller, allows the systems to be used for a wide range of laboratory applications. The pumps and systems can easily be combined with the RE212 rotary evaporator.

- Individually expandable for a custom-fit vacuum system
- ATEX-compliant internal atmosphere only and chemically resistant
- Environmentally friendly technology: Safe recovery of solvents
- Highlight: The vacuum controller provides intuitive handling and maximum operating comfort

Discover the KNF range:
www.scientificlabs.co.uk/knf



Esco® Airstream® G4 Class II Biological Safety Cabinet Packages

3 YEARS NEW

28% OFF

ESCO
LIFESCIENCES GROUP

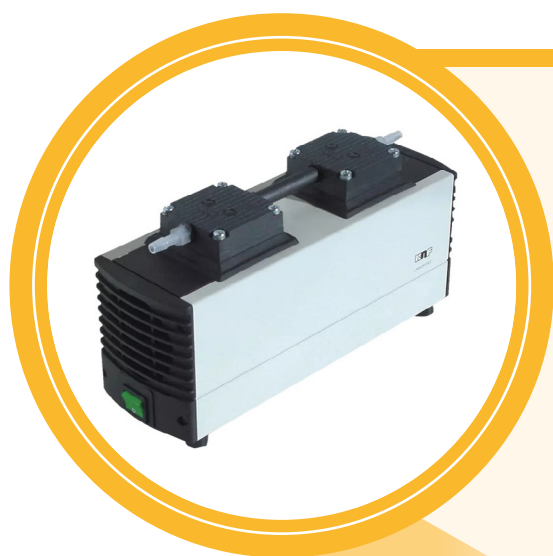
With intuitive Centurion touchscreen controller, EN12469-certified with standby height that easily activates standby mode, and ergonomic work zone with bright, dimmable LED and with raised, durable, stainless-steel armrest. Available with stainless steel side walls and single piece work tray (S series) or glass side walls and multi piece work tray (E series).

- Frameless, shatterproof, and UV-absorbing tempered glass sash with a 10° angle
- USB port and remote Modbus
- Energy-efficient DC ECM that allows up to 70% energy savings
- Standby mode
- Advanced filtration system creates ISO Class 3 work zone, long filter life for lower operating cost
- Isocide™ antimicrobial powder coating
- **Package includes:** biological safety cabinet, UV lamp, electrical outlet, and support stand telescoping with leveling feet and castors



May incur an additional delivery charge

Code	Model	Ext Dims, w x d x h, mm	Int Dims, w x d x h, mm	List Price, £	Offer Price, £
F25046	AC2-2E8 G4 (E series)	730 x 850 x 1400	610 x 610 x 650	7784.00	5605.00
F25047	AC2-2S8 G4 (S series)	730 x 850 x 1400	610 x 610 x 650	7784.00	5605.00
F25048	AC2-3E8 G4 (E series)	1035 x 850 x 1400	915 x 610 x 650	9010.00	6488.00
F25049	AC2-3S8 G4 (S series)	1035 x 850 x 1400	915 x 610 x 650	9010.00	6488.00
F25044	AC2-4E8 G4 (E series)	1340 x 850 x 1400	1220 x 610 x 650	9194.00	6620.00
F25045	AC2-4S8 G4 (S series)	1340 x 850 x 1400	1220 x 610 x 650	9194.00	6620.00
F25050	AC2-5E8 G4 (E series)	1645 x 850 x 1400	1525 x 610 x 650	12300.00	8856.00
F25051	AC2-5S8 G4 (S series)	1645 x 850 x 1400	1525 x 610 x 650	12300.00	8856.00
F25052	AC2-6E8 G4 (E series)	1950 x 850 x 1400	1830 x 610 x 650	12559.00	9043.00
F25053	AC2-6S8 G4 (S series)	1950 x 850 x 1400	1830 x 610 x 650	12559.00	9043.00



KNF LABOPORT® N 816.3 KT.18 Mini Diaphragm Vacuum Pump

2 YEARS

22% OFF

Chemically resistant, oil-free diaphragm vacuum pump with PPS heads, PTFE-coated diaphragms, and FFPM valves.

Code	Max Flow Rate, L/min	Ultimate Vacuum, mbar	Dims, w x d x h, mm	List Price, £	Offer Price, £
F24398	16	20	90 x 361 x 141	858.00	670.00



KNF LABOPORT® N 820 G Diaphragm Vacuum Pump

2
YEARS

20%
OFF

Chemically resistant, compact, and oil-free with manual speed control. Gas ballast, PTFE/TFM heads, PTFE-coated diaphragms, and FFPM valves. Ideal for extremely aggressive/corrosive gases and vapours.

Code	Max Flow Rate, L/min	Ultimate Vacuum, mbar	Dims, w x d x h, mm	List Price, £	Offer Price, £
F14996	20	6	163 x 259 x 220	1910.00	1528.00

SLS Lab Pro PurA-Q+ Type 1 and 2 Water Purification Systems

1
YEAR

Combines ultrapure and DI water in one unit saving you money and space. Type 2 water is ideal for buffer, reagent and media preparation, sample dilution and general chemistry. Type 1, dispensed direct from the unit or using an optional remote dispenser, is perfect for the most sensitive applications such as cell and tissue culture, molecular biology, electrophoresis, chromatography, and spectroscopy.

- Intuitive, icon-based, interactive, touchscreen user interface
- Up to 2L/min ultrapure water with volumetric dispense
- Variable make up rate, up to 25L/hr
- Mount on-bench, under-bench or on the wall
- Continuous TOC monitoring
- Low endotoxin, RNase, DNase and protease options available



OVER
50%
OFF



Installation service available - please enquire

Code	Model	Dispenser	List Price, £	Offer Price, £
F17184T	PurA-Q+ 20	Integrated	15021.00	6650.00
F17186T	PurA-Q+ 20 R	Remote	15614.00	6950.00

Reservoirs

Code	Capacity, L	Description	Dims, w x d x h, mm	List Price, £	Offer Price, £
F151364T	30	Storage reservoir	405 x 230 x 495	1632.00	690.00
F151365T	60	Storage reservoir	480 x 330 x 495	1909.00	780.00
F151366T	100	Storage reservoir	480 x 360 x 810	2564.00	1090.00
F17188T	100	Storage reservoir with pump	480 x 360 x 810	3620.00	1695.00



**SCIENTIFIC
LABORATORY
SUPPLIES**

SEE
PAGE
10

GILSON
PIPETMAN® 4
Pipette Kit

**35%
OFF**



England & Wales	+44 (0)115 982 1111
Scotland	+44 (0)123 643 1857
Northern Ireland	+44 (0)28 9262 1100
Republic of Ireland	+353 (0)1 4069 464
International	+44 (0)115 977 5060
East Africa	+254 (0)728 156294

www.scientificlabs.co.uk

**FOCUS**