

# BACK BASICS

## 2022

Essentials for your laboratory including:

- 35% OFF Eppendorf CryoCube® F740 Series ULT Freezers
- 40% OFF Gilson PIPETMAN® G Manual Pipettes
- 50% OFF SLS Lab Basics my-FUGE 12 Place Centrifuge
- 30% OFF OHAUS Navigator™ Portable Balances
- 30% OFF Spex® Jenway® 7205 Series UV/VIS Spectrophotometers
- 25% OFF SLS Lab Pro Statebourne Biorack Storage Refrigerators

We stock the leading brands in laboratory supplies



Valid 18<sup>th</sup> May - 30<sup>th</sup> Sept 2022



**SCIENTIFIC  
LABORATORY  
SUPPLIES**

# Welcome to the 2022 issue of BACK 2 BASICS

We work closely with a number of our key suppliers to bring you the best deals in the market for selected laboratory products. In this edition of BACK 2 BASICS we have fantastic offers on selected lines from our own SLS Lab Pro, SLS Select and SLS Lab Basics brands alongside those from world renowned manufacturers such as Grant, Eppendorf, Corning, Gilson, Mettler Toledo, Ohaus, Spex Jenway, Haier and Benchmark.

To benefit from the prices offered in this brochure, please use the appropriate promotional code when placing your order.

In addition to the brochure, visit our website for supplementary 'BACK 2 BASICS EXTRA' online offers for even more great savings on many other fantastic products.

Please hurry, these discounts are only valid until 30<sup>th</sup> September 2022.

Kind regards,  
Scientific Laboratory Supplies (SLS)



## KEY to product symbols:



New product



Length of warranty



Made in Britain



Sustainable product

**DELIVERING PRECISELY THE QUALITY YOU NEED**

## Eppendorf SafeCode CryoStorage Vials

eppendorf

Eppendorf CryoStorage Vials take advantage of the 3-level coding of the SafeCode system (datamatrix code, barcode, and clear writing) to enable safe sample identification. Up to 96 pre-labelled vials are pre-racked and pre-capped for convenient usage. Manufactured from high-quality polypropylene as Eppendorf Quality® or sterile purity to fulfil different sample requirements. The vial range covers 0.5mL to 4.0mL for a broad range of storage applications from -196°C to +121°C.

- Pre-labeled off-the-shelf consumables for immediate use
- Store all relevant experimental data for easy documentation
- Reliable long-term labels for safe sample ID



Code	Volume, mL	Sterility	Pack	List Price, £	Offer Price, £
<b>B2B8246</b>	0.5	Non sterile	960	1086.00	804.00
<b>B2B8248</b>	1	Non sterile	960	1122.00	830.00
<b>B2B8250</b>	1.5	Non sterile	480	592.00	438.00
<b>B2B8252</b>	2	Non sterile	480	611.00	452.00
<b>B2B8254</b>	4	Non sterile	480	666.00	493.00
<b>B2B8256</b>	0.5	Sterile	960	1122.00	830.00
<b>B2B8258</b>	1	Sterile	960	1159.00	858.00
<b>B2B8260</b>	1.5	Sterile	480	611.00	452.00
<b>B2B8262</b>	2	Sterile	480	629.00	465.00
<b>B2B8264</b>	4	Sterile	480	684.00	506.00

## Eppendorf CryoCube® F740 Series -86°C ULT Freezers



The CryoCube® F740h series is the latest addition to the Eppendorf freezer family. Combining the high quality tradition of previous freezers with an increased capacity, the CryoCube® F740h is designed to store more of your samples securely while maintaining optimal energy usage.

The integration of the PhysioCare Concept® during development means that the CryoCube® F740h is easier and more comfortable to use, supports an ergonomic workspace, and enables an optimal workflow in the lab.

The CryoCube® F740h green flagships – by using hydrocarbon based cooling liquids (R290/R170), the power consumption is further reduced compared to classic cooling systems.

- 3 or 5 compartment option for flexible usage
- Insulated inner doors with gaskets minimise temperature fluctuation during samples access
- Improved energy consumption values and low noise level
- F740hi feature a touch-screen interface with user access options for enhanced sample security and safety
- Dims, w x d x h, mm: 1099 x 902 x 1973



Code	Alt Ref	Model	Capacity, L	Door Handle	Compartments	List Price, £	Offer Price, £
<b>B2B8230</b>	F740340012	F740h	740	Left	3	15487.00	10069.00
<b>B2B8232</b>	F740340032	F740h	740	Left	5	15487.00	10069.00
<b>B2B8234</b>	F740340022	F740h	740	Right	3	16272.00	10576.00
<b>B2B8236</b>	F740340042	F740h	740	Right	5	16272.00	10576.00
<b>B2B8238</b>	F740320012	F740hi	740	Left	3	17173.00	11161.00
<b>B2B8240</b>	F740320032	F740hi	740	Left	5	17173.00	11161.00
<b>B2B8242</b>	F740320022	F740hi	740	Right	3	17978.00	11687.00
<b>B2B8244</b>	F740320042	F740hi	740	Right	5	17978.00	11687.00





# Exceed Your Limits

## With Ultracentrifuges

Our ultracentrifuges of the CP-NX Series and CS-(F) NX Series have been designed to safely operate at up to 1,050,000 x *g* and be as userfriendly as possible.

Get inspired by the digital tracking features, high imbalance tolerance and compact design.

Discover more about our comprehensive rotor and consumable portfolio to match your applications.

Find out more:  
**[Scientificlabs.co.uk/Eppendorf\\_himac](https://Scientificlabs.co.uk/Eppendorf_himac)**





## Eppendorf 5425 R Refrigerated Centrifuges



These whisper quiet 24 place microcentrifuges offer an outstanding set of features for a broad range of molecular and cell biology applications in Eppendorf and PCR tubes from 0.2 to 5mL. The 5425 R provides precise temperature control for processing temperature-sensitive samples with its advanced cooling system. Thanks to the short pre-cooling time of only 8 minutes (~21 to 4°C), the centrifuge is ready to use in no time.

- Aerosol tight Eppendorf QuickLock® lids for simple and safe handling
- Outstanding software features (e.g. adjustable acceleration and braking ramps, 3 program buttons, short function without continuous pressing of the key)
- OptiBowl® design for quiet operation, even without a rotor lid
- Soft touch one finger lid closure for ergonomic operation
- Outstanding cooling system for processing temperature sensitive samples from 0.2 – 5mL
- The patented compressor technology reduces vibrations and protects your samples
- Temperature range: -10 to +40°C
- Timer: 10s to 9:59hr, with continuous run function
- Dims, w x d x h: 240 x 390 x 240mm
- Speed range: 100 to 15060RPM; max RCF: 21300xg (with fixed angle rotor)
- Supplied with FA-24x2 rotor



Code	Description	List Price, £	Offer Price, £
<b>B2B8224</b>	5425 R with keypad control	4542.00	3542.00
<b>B2B8226</b>	5425 R with rotary knobs	4542.00	3542.00

## Eppendorf 5910 Ri Refrigerated Centrifuge



Combine high capacity and performance in a compact and ergonomic footprint. The large 7-inch VisioNize® touch interface with an intuitive user experience provides fast and error-free operation, ensuring efficient and reproducible runs.

- Large 7-inch VisioNize® touch interface for super-fast parameter settings via unique favourites function
- Swing-bucket rotors and adapters accommodate tubes and bottles from 0.2mL to 1,000mL, as well as of all types of MTP, PCR, or Deepwell Plates
- Fixed-angle rotors for high-speed molecular biology applications in tubes from 0.2mL to 250mL
- User management with multiple authorisation levels and documentation features supporting GLP/GxP requirements
- High centrifugation speed of up to 22132xg (14000RPM)
- Aerosol-tight Eppendorf QuickLock® caps and lids for fast and ergonomic lid locking
- Quiet operation to improve your work environment
- Centrifuge lid with soft-touch lid closure
- Temperature range from -11 to 40°C
- Automatic rotor recognition and imbalance detection for maximum operational safety



Code	Description	Dims, w x d x h, mm	List Price, £	Offer Price, £
<b>B2B8228</b>	5910 Ri without rotor	720 x 680 x 370	8582.00	6866.00

## SLS Select Centrifuge Tubes



- Certified RNase and DNase free
- Sterile
- Manufactured from high clarity medical grade polypropylene
- Leak proof flat polypropylene cap
- Printed graduations and a large writing area for sample identifications
- Racked tubes are packaged in recyclable card racks
- Lot traceability
- RCF: 9000 (15 and 50mL tubes)



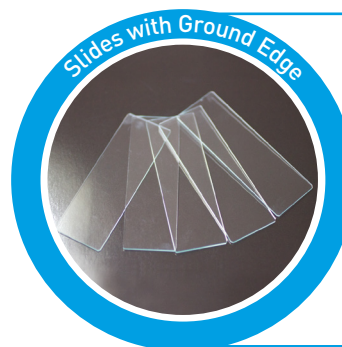
Supplied in packs of 500

Code	Description	Volume, mL	List Price, £	Offer Price, £
<b>B2B06192</b>	Loose	15	178.00	45.00
<b>B2B06194</b>	Racked	15	199.00	52.00
<b>B2B06196</b>	Loose	50	220.00	54.00
<b>B2B06198</b>	Racked	50	206.00	62.00
<b>B2B06200</b>	Skirted, bagged	50	217.00	58.00



### Meker Portable Burners

Code	Description	List Price, £	Offer Price, £
<b>B2B06102</b>	Burner	82.00	45.10
<b>B2B06104</b>	Cartridge, 240g	16.25	4.88



### SLS Select Slides with Ground Edge, 76 x 26 x 1mm

Supplied in packs of 50

Code	Description	List Price, £
<b>MIC2000</b>	Plain	4.00
<b>MIC2002</b>	Twin frost	2.76

## Parafilm® M Sealing Film

- Stretches up to 200% and clings even around irregular shapes and surfaces
- Free of plasticisers and consists primarily of polyolefins and paraffin waxes
- Conforms to the provisions of the US FDA when used below 55°C and observance of GMP (Good Manufacturing Practice)
- Resistant up to 48 hours against many polar substances e.g. saline solutions, inorganic acids and alkaline solutions
- Temperature range (continuous use): -45 to +50°C



Code	Dims, mm x m	List Price, £	Offer Price, £
<b>B2B06094</b>	50 x 75	55.00	22.00
<b>B2B06096</b>	100 x 38	61.00	24.40
<b>B2B06098</b>	100 x 75	99.00	39.60
<b>B2B06100</b>	500 x 15	119.00	47.60

## Swann-Morton Qlicksmart BladeFLASK Scalpel Blade Remover

Swann-Morton LIMITED

A safe, quick and easy single-handed method for scalpel blade removal. The puncture proof sharps container shuts off automatically when it is full, and can be disposed of safely. Suitable for wall or surface mounting using the purpose designed bracket.



Code	Description	List Price, £	Offer Price, £
<b>B2B06042</b>	BladeFLASK scalpel blade remover	30.70	23.00
<b>B2B06044</b>	Mounting bracket	10.29	7.72



### Axygen® Microcentrifuge Tube Boxes

Polypropylene. -80 to 121°C. 100 x 1.5 to 2.0mL tube capacity. **Supplied in packs of 5.**

Code	Colour	List Price, £	Offer Price, £
<b>B2B7108</b>	Assorted	49.50	28.00
<b>B2B7110</b>	Clear	49.50	31.00

## Portwest 2852 Standard White Lab Coats

PORTWEST

- This versatile coat features a concealed stud front, two lower patch pockets and a single chest pocket.
- Non shrinking to ensure that this style maintains its shape wash after wash
- Excellent dye retention, making the garment look newer for longer
- 50+ UPF rated fabric to block 98% of UV rays
- 3 pockets for ample storage: two lower patch pockets and one chest pocket
- Concealed stud front for easy access
- 65% polyester, 35% cotton
- Garment decoration with logo or embroidery available - please enquire



Code	Size	List Price, £	Offer Price, £
<b>B2B8186</b>	XXS	18.39	15.63
<b>B2B8188</b>	XS	18.39	15.63
<b>B2B8190</b>	S	18.39	15.63
<b>B2B8192</b>	M	18.39	15.63
<b>B2B8194</b>	L	18.39	15.63
<b>B2B8196</b>	XL	18.39	15.63
<b>B2B8198</b>	2XL	18.39	15.63
<b>B2B8200</b>	3XL	18.39	15.63
<b>B2B8202</b>	4XL	18.39	15.63
<b>B2B8204</b>	5XL	18.39	15.63

## uvex Pheos Safety Glasses

**uvex**

- Duo-spherical lens with large field of vision
- 100% metal free
- Soft, no slip arm ends to prevent pressure points
- Reliable UV 400 protection
- Anti-fog inside, extremely scratch-resistant and chemical-resistant outside



**15% OFF**

Code	Frame/Arm Colour	Lens Colour	List Price, £	Offer Price, £
<b>B2B8218</b>	Black/green	Clear	7.19	<b>6.11</b>

## Portwest® PW30 Safety Visitor Glasses

**PORTWEST**

- Moulded-in brow guard and vented side shields for excellent side protection
- Can be worn over prescription glasses
- 100% metal free
- 99% UV protection
- Anti-scratch



**15% OFF**

Code	Frame/Arm Colour	Lens Colour	List Price, £	Offer Price, £
<b>B2B8220</b>	Clear	Clear	2.80	<b>2.38</b>



### Tempshield® Cryo-Apron®

For ultra cold applications down to -196°C. Made from state of the art lightweight waterproof material.

**60% OFF**

Code	Length, mm	Offer Price, £
<b>B2B8266</b>	914	<b>101.00</b>

## NITREX Nitrile Gloves

- Ultra sensitive: latex-free, powder-free, ultimate tactile sensitivity, good chemical resistance
- Extra sensitive: latex-free, ultimate tactile sensitivity, passes viral penetration tests, strong chemical resistance, tested for use with chemotherapy drugs
- AQL: 1.5; length: 240mm



**UP TO 37% OFF**

**Supplied in 10 boxes of 200 gloves**

Code	Description	Size	Pack	Offer Price, £
<b>COV2026</b>	Ultra sensitive	Medium	2000	<b>189.00</b>
<b>COV2032</b>	Extra sensitive	Medium	2000	<b>217.00</b>



## Bollé TRACKER II Safety Glasses

**bollé**  
SAFETY

- Ultra comfortable
- Highly scratch-resistant, high resistance to the most aggressive chemicals and anti-fog (PLATINUM® coating)
- Side ventilation
- Removable adjustable strap
- 99.9% UV protection



Code	Frame/Arm Colour	Lens Colour	List Price, £	Offer Price, £
<b>B2B8222</b>	Black	Clear	13.55	<b>11.52</b>



**Tempshield® Waterproof Cryo-Grip® Gloves**

Code	Colour	Length, mm	Size	Offer Price, £
<b>CGWRSWP</b>	Blue	280-300 (wrist)	Small	<b>158.00</b>
<b>PCGEBMWP</b>	Pink	440-500 (elbow)	Medium	<b>202.00</b>

OVER 50% OFF

## PYREX® Volumetric Flasks, Class A

**PYREX®**

- Complies with ISO 1042 and DIN 12664
- Each flask is laser etched with an individual serial number batch code and date of manufacture
- Manufactured from chemically resistant PYREX® glass
- Inscriptions in white enamel
- Polyethylene stopper



Code	Volume, mL	Pack	List Price, £	Offer Price, £
<b>B2B8044</b>	5	5	45.20	<b>27.10</b>
<b>B2B8046</b>	10	5	45.20	<b>27.10</b>
<b>B2B8048</b>	20	5	53.10	<b>31.90</b>
<b>B2B8050</b>	25	5	53.20	<b>31.90</b>
<b>B2B8052</b>	50	5	55.00	<b>33.00</b>
<b>B2B8054</b>	100	5	68.00	<b>40.80</b>
<b>B2B8056</b>	250	2	37.50	<b>22.50</b>
<b>B2B8058</b>	500	2	50.50	<b>30.30</b>
<b>B2B8060</b>	1000	2	67.00	<b>40.20</b>
<b>B2B8062</b>	2000	Each	59.00	<b>35.40</b>

## Azlon® Volumetric Flasks, Class B



Manufactured from translucent polypropylene giving good durability. Calibrated to ISO 1042, class B tolerances. Supplied with polypropylene stopper.

**40% OFF**



Code	Volume, mL	Pack	List Price, £	Offer Price, £
<b>B2B8110</b>	25	Each	13.02	7.81
<b>B2B8112</b>	50	Each	12.40	7.44
<b>B2B8114</b>	100	Each	13.23	7.94
<b>B2B8116</b>	250	Each	18.00	10.80
<b>B2B8118</b>	500	Each	20.50	12.30
<b>B2B8120</b>	1000	Each	22.00	13.20

## SLS Select Low Form Beakers



- Ideal for general laboratory use
- White graduations and marking spot
- Made from high quality borosilicate glass
- High chemical and thermal resistance
- Staple item of any laboratory
- Standards equivalent to ISO 3819



**65% OFF**

Code	Capacity, mL	Dims, Ø x h, mm	Pack	List Price, £	Offer Price, £
<b>B2B06332</b>	25	34 x 50	12	11.61	4.05
<b>B2B06334</b>	50	42 x 60	12	12.60	4.40
<b>B2B06336</b>	100	50 x 70	12	14.13	4.95
<b>B2B06338</b>	150	60 x 80	12	18.17	6.35
<b>B2B06340</b>	250	70 x 95	12	22.30	7.80
<b>B2B06342</b>	400	80 x 110	12	28.30	9.90
<b>B2B06344</b>	600	90 x 125	6	17.91	6.25
<b>B2B06346</b>	1000	105 x 145	6	26.50	9.30

## SLS Select Conical Flasks



- With white graduations and marking spot
- Made from high quality borosilicate glass
- High chemical and thermal resistance
- Used for many laboratory applications
- Standards equivalent to ISO 1773

**65% OFF**



Code	Capacity, mL	Dims, h x Ø x neck Ø, mm	Pack	List Price, £	Offer Price, £
<b>B2B06358</b>	50	80 x 54 x 24	12	32.80	11.50
<b>B2B06360</b>	100	105 x 64 x 29	12	29.30	10.25
<b>B2B06362</b>	250	145 x 85 x 31	6	19.43	6.80
<b>B2B06364</b>	500	184 x 103 x 36	6	29.00	10.15
<b>B2B06366</b>	1000	131 x 214 x 42	6	41.40	14.50

## SLS Select Media Bottles



- Perfect for everyday laboratory use
- Suitable for many applications, such as storage of culture media
- Made from high quality borosilicate glass 3.3 to ISO 3585
- Heat and chemical resistance
- GL45 blue polypropylene cap and pouring ring
- White graduations and marking spot
- Sloped shoulders for easy pour
- Standards to ISO 4796-1

UP TO  
**67%  
OFF**



Code	Capacity, mL	Dims, Ø x h, mm	Pack	List Price, £	Offer Price, £
<b>B2B06348</b>	100	56 x 100	10	30.30	10.00
<b>B2B06354</b>	250	70 x 138	10	34.50	11.50
<b>B2B06350</b>	500	86 x 176	10	41.50	14.00
<b>B2B06352</b>	1000	101 x 225	10	58.00	22.00
<b>B2B06356</b>	2000	136 x 260	10	125.00	50.00
<b>B2B8342</b>	5000	186 x 330	Each	119.00	45.00
<b>B2B8344</b>	10000	234 x 410	Each	193.00	63.00
<b>B2B8346</b>	20000	299 x 505	Each	301.00	115.00

## SLS Select Measuring Cylinders



- Calibrated to Class B tolerances
- Can be used for many applications where a high accuracy level of volume measurement isn't critical
- Made from high quality borosilicate glass
- High chemical and thermal resistance
- Sturdy hexagonal glass base
- White graduations
- Standards equivalent to ISO 4788

**65%  
OFF**



Code	Capacity, mL	Height, mm	Pack	List Price, £	Offer Price, £
<b>B2B06368</b>	10	135	2	6.30	2.20
<b>B2B06370</b>	25	160	2	7.14	2.50
<b>B2B06372</b>	50	195	2	8.32	2.95
<b>B2B06374</b>	100	250	2	10.00	3.50
<b>B2B06376</b>	250	300	2	17.07	6.00
<b>B2B06378</b>	500	350	2	26.10	9.15
<b>B2B06380</b>	1000	430	Each	19.38	6.80

## Gratnells Trays

Handy trays with robust, polypropylene construction.



5  
YEARS

Gratnells  
Everything in its place.

55%  
OFF

Code	Description	Colour	Dims, l x w x h, mm	List Price, £	Offer Price, £
<b>B2B06082</b>	F1 shallow	Royal blue	427 x 312 x 75	8.42	3.79
<b>B2B06084</b>	F1 shallow	Flame red	427 x 312 x 75	8.42	3.79
<b>B2B06086</b>	F1 shallow	Translucent	427 x 312 x 75	9.00	4.05
<b>B2B06090</b>	F2 deep	Royal blue	427 x 312 x 150	14.77	6.65
<b>B2B06092</b>	F2 deep	Flame red	427 x 312 x 150	14.77	6.65
<b>B2B06088</b>	F2 deep	Translucent	427 x 312 x 150	15.00	6.75

## SLS Select BenchSafe Bench Protection

Strong, tear-resistant, waterproof polyethylene surface.



Code	Description	Dims, w x l, mm	Pack	List Price, £	Offer Price, £
<b>B2B06046</b>	BenchSafe	490 x 50000	1 roll	200.00	80.00
<b>B2B06048</b>	BenchSafe	460 x 570	50 sheets	135.00	54.00
<b>B2B06050</b>	BenchSafe	600 x 490	100 sheets	205.00	82.00
<b>B2B06052</b>	BenchSafe Plus	600 x 490	50 sheets	160.00	64.00

## Plastic Tray Trolleys

- Lightweight
- Supplied with precision bearing castors including 2 brakes
- Ergonomic in design and attractive in appearance
- Heavy duty construction from high quality, nylon fibre blended polymers



Code	Shelves	Dims, w x d x h, mm	Platform Dims, mm	Max Load, kg	List Price, £	Offer Price, £
<b>B2B06076</b>	3	460 x 750 x 980	630 x 424	150	175.00	123.00
<b>B2B06078</b>	2	460 x 750 x 940	630 x 424	100	149.00	104.00
<b>B2B06080</b>	2	513 x 990 x 970	866 x 500	250	311.00	187.00



## QMP Hazardous Storage Cabinets



- 'No snag' handles with 2-point locking mechanism
- 0.7mm mild steel, pop riveted carcass construction
- Warning stickers supplied as standard
- Adjustable spill-retaining galvanised shelves for superior spill management with a UDL of 70kg
- Integral liquid-tight sump
- Powder coated yellow with Germ Guard Active Technology paint
- Reaction to Fire Classification EN 13501-1



Code	Dims, w x d x h, mm	No. of Shelves	Sump Capacity, L	List Price, £	Offer Price, £
<b>B2B8214</b>	350 x 300 x 700	1	3	229.00	195.00
<b>B2B8210</b>	460 x 460 x 900	1	7	271.00	230.00
<b>B2B8216</b>	900 x 460 x 700	1	14	317.00	269.00
<b>B2B8212</b>	900 x 460 x 900	1	14	347.00	295.00
<b>B2B8206</b>	900 x 460 x 1800	3	14	516.00	439.00
<b>B2B8208</b>	1200 x 460 x 1800	3	18	608.00	517.00

## SLS Select Reagent Reservoirs



- "V" shaped well design for maximum reagent recovery
- Easy to read graduation markings located on the top edge with a fill line on inner walls
- Drip free pour-off spouts at every corner
- Manufactured in a clean room with sterile versions certified as RNase/DNase and pyrogen free
- Wide base for stability
- Tiered wall design prevents deformation when handling and reduces the chance of spills
- Nesting design allows easy separation that reduces the chance of warping or damage
- Lot numbers indicated on sterile versions
- Polystyrene



Code	Capacity, mL	Sterility	Inner Pack	Pack	List Price, £	Offer Price, £
<b>B2B06039</b>	25	Sterile	1	100	94.00	61.00
<b>B2B06041</b>	25	Sterile	5	200	113.00	73.00
<b>B2B06043</b>	25	Non sterile	Bulk	100	39.60	25.70
<b>B2B06045</b>	50	Sterile	1	100	97.00	63.00
<b>B2B06047</b>	50	Sterile	5	200	119.00	77.00
<b>B2B06049</b>	50	Non sterile	Bulk	100	41.80	27.20
<b>B2B06051</b>	100	Sterile	1	100	115.00	75.00
<b>B2B06053</b>	100	Sterile	5	200	135.00	88.00
<b>B2B06055</b>	100	Non sterile	Bulk	100	43.90	28.50

## SLS Select Deep Well Storage Plates



- High performance plates produced in cleanrooms that are certified for medical device assembly.
- Manufactured in pure virgin medical grade polypropylene with class leading low levels of extractable elements
- ANSI-SBS footprint
- Tested for low extractables

- Alphanumeric reference grid
- Suitable for automated or manual applications
- For use in sample storage at 86°C to DNA denaturation at 100°C
- Autoclavable
- No inner edges to allow better collection of magnetic beads
- Manufactured under DNase/RNase free environment

### Square Well

Code	No. of Wells	Well Volume, mL	Bottom	Colour	Sterility	Pack	List Price, £	Offer Price, £
<b>B2B8304</b>	96	2	V	Natural	Non sterile	50	179.00	63.00
<b>B2B8306</b>	96	2	V	Black	Non sterile	50	197.00	69.00
<b>B2B8308</b>	96	2.2	V	Natural	Non sterile	50	179.00	63.00
<b>B2B8310</b>	96	2.2	U	Natural	Non sterile	50	291.00	102.00
<b>B2B8312</b>	384	0.3	V	Natural	Non sterile	48	744.00	260.00

### Round Well

Code	No. of Wells	Well Volume, mL	Bottom	Colour	Edges	Sterility	Pack	List Price, £	Offer Price, £
<b>B2B8314</b>	96	1	U	Natural	Rimmed	Non sterile	50	210.00	74.00
<b>B2B8316</b>	96	1	U	Black	Rimmed	Non sterile	50	195.00	68.00
<b>B2B8318</b>	96	1	U	Black	Rimless	Non sterile	50	210.00	74.00
<b>B2B8320</b>	96	1.2	U	Natural	Rimmed	Non sterile	50	218.00	76.00
<b>B2B8322</b>	96	1.2	U	Natural	Rimless	Non sterile	50	218.00	76.00
<b>B2B8324</b>	96	2	U	Natural	Rimmed	Non sterile	50	227.00	79.00
<b>B2B8326</b>	96	2	U	Natural	Rimmed	Sterile	50	344.00	120.00



### Sealing Mats

Code	Description	Pack	List Price, £	Offer Price, £
<b>B2B8328</b>	96 square well silicone sealing mat	50	417.00	146.00
<b>B2B8330</b>	96 square well silicone sealing mat, can be punctured	50	417.00	146.00
<b>B2B8332</b>	96 round well silicone sealing mat for 1.0mL plates, can be punctured	50	417.00	146.00
<b>B2B8334</b>	96 round well silicone sealing mat for 2.0mL plates, can be punctured	50	417.00	146.00
<b>B2B8336</b>	96 square well silicone sealing mat, cross cut	50	417.00	146.00
<b>B2B8338</b>	96 round well silicone sealing mat for 2.0mL plates, cross cut	50	417.00	146.00
<b>B2B8340</b>	384 square well silicone sealing mat	50	417.00	146.00

## SLS Lab Pro Variable Volume Pipettes



The SLS Lab Pro pipettes offer superior quality at an affordable price. These are lightweight pipettes with a handle that fits naturally in the hand. A lubricated piston assembly offers very light pipetting forces.

- Adjustable tip ejector button to adapt to both right- and left-handed users
- Clip mechanism allows easy and safe removal of tip ejector
- Fully autoclavable

Code	Channel	Volume Range, µL	List Price, £	Offer Price, £
<b>B2B06292</b>	Single	0.2 - 2	221.00	<b>111.00</b>
<b>B2B06294</b>	Single	1 - 10	221.00	<b>111.00</b>
<b>B2B06296</b>	Single	2 - 20	221.00	<b>111.00</b>
<b>B2B06298</b>	Single	10 - 100	221.00	<b>111.00</b>
<b>B2B06300</b>	Single	20 - 200	221.00	<b>111.00</b>
<b>B2B06302</b>	Single	100 - 1000	221.00	<b>111.00</b>
<b>B2B06304</b>	Single	500 - 5000	252.00	<b>126.00</b>
<b>B2B06306</b>	Single	1000 - 10000	252.00	<b>126.00</b>
<b>B2B06308</b>	8	0.5 - 10	520.00	<b>260.00</b>
<b>B2B06310</b>	8	2 - 20	520.00	<b>260.00</b>
<b>B2B06312</b>	8	20 - 200	520.00	<b>260.00</b>
<b>B2B06314</b>	8	20 - 300	520.00	<b>260.00</b>
<b>B2B06316</b>	12	0.5 - 10	594.00	<b>297.00</b>
<b>B2B06318</b>	12	2 - 20	594.00	<b>297.00</b>
<b>B2B06320</b>	12	20 - 200	594.00	<b>297.00</b>
<b>B2B06322</b>	12	20 - 300	594.00	<b>297.00</b>

## SLS Lab Basics Variable Volume Pipettes



### Single Channel:

- Ergonomic design ensuring light weight & soft plunger movement
- Click-stop system for volume selection
- Colour coded for easy identification
- Calibration conforms to EN-ISO 8655 with report enclosed with every pipette

### Multi Channel:

- Smooth and light tip loading and ejection
- Leak free sealing of tips
- Manifold is easily removable, fully autoclavable and can rotate 360° for easy right or left hand operation

Code	Channel	Volume Range, µL	Compatible Tips	List Price, £	Offer Price, £
<b>B2B06156</b>	Single	0.1 - 2.5	10µL/10XL	121.00	<b>46.00</b>
<b>B2B06158</b>	Single	0.5 - 10	10µL/10XL	121.00	<b>46.00</b>
<b>B2B06160</b>	Single	2 - 20	10XL	121.00	<b>46.00</b>
<b>B2B06162</b>	Single	5 - 50	20µL/100µL	121.00	<b>46.00</b>
<b>B2B06164</b>	Single	10 - 100	100µL/200µL	121.00	<b>46.00</b>
<b>B2B06166</b>	Single	20 - 200	200µL/300µL	121.00	<b>46.00</b>
<b>B2B06168</b>	Single	100 - 1000	1000µL/1250µL	121.00	<b>46.00</b>
<b>B2B06170</b>	Single	500 - 5000	—	145.00	<b>52.00</b>
<b>B2B06172</b>	Single	1000 - 10000	—	145.00	<b>54.00</b>
<b>B2B06174</b>	8	0.5 - 10	10µL/10XL	546.00	<b>165.00</b>
<b>B2B06176</b>	8	5 - 50	20µL/100µL	546.00	<b>165.00</b>
<b>B2B06178</b>	8	10 - 100	100µL/200µL	546.00	<b>165.00</b>
<b>B2B06180</b>	8	20 - 200	200µL/300µL	546.00	<b>165.00</b>
<b>B2B06182</b>	8	30 - 300	200µL/300µL	546.00	<b>165.00</b>

## SLS Lab Basics Bottle Top Dispensers

2  
YEARS



Ergonomically designed for easy use and outstanding performance, in addition to being extremely durable and reliable. Calibrated in ISO 17025 accredited calibration facility.

- Fully autoclavable
- Easy re-calibration: a single tool to recalibrate
- Volume lock: smooth and accurate volume setting
- Universal bottle adaptor: comes with 4 additional adaptors for regular bottle sizes
- Uncomplicated mounting: snap-fit mounting of discharge tube



Code	Volume Range, mL	Graduations, mL	List Price, £	Offer Price, £
<b>B2B06184</b>	1 - 10	0.2	203.00	<b>102.00</b>
<b>B2B06186</b>	2.5 - 30	0.5	231.00	<b>116.00</b>
<b>B2B06188</b>	5 - 60	1.0	231.00	<b>116.00</b>

## Gilson PIPETMAN® G Manual Pipettes

3  
YEARS



Offering one of the lowest pipetting forces commercially available with a redesigned piston assembly system and high quality piston grease for comfortable pipetting. It relies on the legendary accuracy, precision, and reliability of PIPETMAN®, with improved pipetting comfort. Made of PVDF and stainless steel for premium durability. The new clip ejector allows for convenient access to serviceable parts.



Code	Channel	Volume Range, µL	List Price, £	Offer Price, £
<b>B2B06474</b>	Single	0.2 - 2	226.00	<b>136.00</b>
<b>B2B06476</b>	Single	1 - 10	226.00	<b>136.00</b>
<b>B2B06478</b>	Single	2 - 20	226.00	<b>136.00</b>
<b>B2B06480</b>	Single	10 - 100	226.00	<b>136.00</b>
<b>B2B06482</b>	Single	20 - 200	226.00	<b>136.00</b>
<b>B2B06484</b>	Single	100 - 1000	226.00	<b>136.00</b>
<b>B2B06486</b>	Single	500 - 5000	226.00	<b>136.00</b>
<b>B2B06488</b>	Single	1000 - 10000	226.00	<b>136.00</b>
<b>B2B06490</b>	8	1 - 10	599.00	<b>358.00</b>
<b>B2B06492</b>	8	2 - 20	599.00	<b>358.00</b>
<b>B2B06494</b>	8	20 - 200	599.00	<b>358.00</b>
<b>B2B06496</b>	8	30 - 300	599.00	<b>358.00</b>
<b>B2B06498</b>	12	1 - 10	700.00	<b>419.00</b>
<b>B2B06500</b>	12	2 - 20	700.00	<b>419.00</b>
<b>B2B06502</b>	12	20 - 200	700.00	<b>419.00</b>
<b>B2B06504</b>	12	30 - 300	700.00	<b>419.00</b>



## Corning® Lambda™ Plus Pipette Starter Kit



Engineered to provide the highest levels of accuracy, reproducibility, and comfort. Features smooth plunger movement and extremely low pipetting forces. A locking mechanism prevents accidental change to the volume setting. Designed to maintain their calibration, even after repeated use and autoclaving. A key is included with each pipette for easy in-house calibration.

- Factory calibrated to strict ISO 8655 standards
- Fully autoclavable and UV resistant
- Designed for universal fit with all common brands of pipette tips
- Adjustable tip ejector

**Includes:** 4 x single-channel pipettes (0.5 to 10µL, 2 to 20µL, 20 to 200µL, 100 to 1000µL), universal carousel rack for 6 single channel pipettes, 3 x Corning DeckWorks™ pipette tips (10µL, 200µL, 1000µL).



Code	List Price, £	Offer Price, £
B2B06428	733.00	401.00

## Corning® Lambda™ EliteTouch™ Pipette Starter Kit



Engineered to provide the highest level of ergonomic, accuracy, and precision. Features smooth plunger movement and extremely low pipetting forces to reduce wrist strain and fatigue (RSI). Coloured pushbuttons (included) can help define user or application for sample safety and lower risk of cross contamination.

- Ergonomic handle design for perfect fit for both right and left hand
- Convenient one-hand volume setting with auto-lock system
- 4-digit counter for greater precision, perfectly positioned for visibility at all times
- Fully autoclavable and UV resistant
- Easy in-lab calibration helps you quickly adjust your pipettor to various liquid types
- Individually tested and supplied with a certificate of quality

**Includes:** 4 x single channel pipettes (0.5 to 10µL, 2 to 20µL, 20 to 200µL, 100 to 1000µL), universal linear stand for 4 single channel pipettes, 3 x Corning® DeckWorks pipette tips (10µL, 200µL, 1000µL), 4 x 3 coloured pushbuttons.



Code	List Price, £	Offer Price, £
B2B06432	928.00	453.00

CORNING

## Break the 3D Barrier

Get there fast with Corning.

Are you just getting started in 3D cell culture? Looking for proven ways to scale up? Or making the move to high throughput screening? Whatever your challenge, Corning can help you break through the barriers to create more *in vivo*-like environments and predictive models. For more than 25 years, Corning has delivered innovations that have advanced the science of 3D cell culture. We pioneered the development of novel tools providing easier access to *in vivo*-like 3D models, such as **Corning® spheroid microplates, Corning Matrigel® matrix and Transwell® permeable supports**, and we continue to support you with a diverse and evolving portfolio of innovative 3D cell culture products, solutions, protocols, and expertise. Corning is committed to working with you in critical areas such as cancer biology, tissue engineering, and regenerative medicine – to help you bring safe, effective drugs and therapies to market in less time with greater certainty. Find out how Corning can help you conduct more biologically relevant research and better predict how your next discovery will behave in the real world.

Visit [www.scientificlabs.co.uk](http://www.scientificlabs.co.uk) and search Corning

## SLS Select Serological Pipettes



UP TO  
**60%  
OFF**

- Manufactured in compliance with the current versions of the ISO 13485 and FDA CFR 21 Part 820, cGMP
- Made from USP Class VI polystyrene resin
- Crisp, dark ascending and descending as well as negative graduations
- Colour-coded rings for easy identification
- Plugged
- Non-pyrogenic
- RNase-/DNase-free
- Sterile



Code	Volume, mL	Packaging	Inner Pack	Pack	List Price, £	Offer Price, £
<b>B2B06382</b>	1	Individual	100	1000	172.00	69.00
<b>B2B06384</b>	1	Bulk	25	1000	135.00	54.00
<b>B2B06386</b>	2	Individual	100	1000	184.00	74.00
<b>B2B06388</b>	2	Bulk	25	1000	134.00	60.00
<b>B2B06392</b>	5	Individual	50	200	47.50	21.40
<b>B2B06390</b>	5	Bulk	25	500	125.00	56.00
<b>B2B06394</b>	10	Individual	50	200	49.90	22.50
<b>B2B06396</b>	10	Bulk	25	500	161.00	72.00
<b>B2B06400</b>	25	Individual	50	200	112.00	50.00
<b>B2B06398</b>	25	Bulk	20	200	187.00	84.00
<b>B2B06402</b>	50	Individual	20	100	144.00	65.00

## SLS Lab Basics Pipette Filler



Lightweight, UV resistant material, featuring adjustable valves and 3 modes (high, low, gravity). Filling and dispensing speed is easily set using the same hand by pressing the large mode button. Uses standard 0.45µm hydrophobic filters. Supplied with charger, bench stand, magnetic/fixable wall mount and 5 coloured nose cones.



Code	List Price, £	Offer Price, £
B2B06190	200.00	100.00

## Corning® Stripettor™ Ultra Pipette Controller



Featuring conveniently positioned switches change operating modes and speeds and a LCD display for continuous visualisation of speed, modes, and battery status. Supplied with universal power supply, 3 x 0.2µm filters, 3 x coloured nose pieces and wall hanger.



Code	List Price, £	Offer Price, £
B2B06430	301.00	153.00



## Molecular Biology

Take your research to the next level.

From sample preparation to analysis, discover how Corning molecular biology tools can help you raise your research to a new level.

- ▶ PCR Consumables
- ▶ Automation Tips
- ▶ Sample Preparation Solutions
- ▶ Molecular Biology Equipment
- ▶ Benchtop equipment

Visit [www.scientificlabs.co.uk](http://www.scientificlabs.co.uk) and search Corning

© 2022 Corning Incorporated. All rights reserved.

## SLS Select PES Syringe Filters



The highly asymmetrical pore structure of PES membranes offers an excellent loading capacity and high flow rate for these naturally hydrophilic syringe filters. Moulded in a polypropylene shelter.

- Diameter: 25mm
- Sterile
- Recommended for preparation of protein samples, ultra-fast filtration of tissue culture media

Supplied in packs of 50, individually wrapped



Code	Pore Size, µm	List Price, £	Offer Price, £
B2B06412	0.22	67.00	23.00
B2B06414	0.45	67.00	23.00



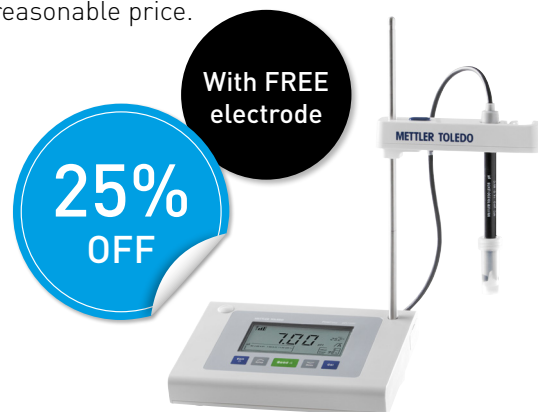
## Mettler Toledo FiveEasy™ Benchtop pH/mV Meters

1  
YEAR



Ideally suited for applications in the laboratory, the FiveEasy™ and FiveEasy™ Plus benchtop instruments provide high quality pH/mV measurements with the simple click of a button. Compact in design, and featuring various data export opportunities, the FiveEasy™ series instruments are the perfect companion to get reliable measurement data, all at a reasonable price.

- Large, well-structured display with intuitive button arrangement and simple menu
- Compact design saves space
- FiveEasy™ Plus meters allow data to be exported either directly to a printer or a PC



	FiveEasy™ F20 pH/mV	FiveEasy Plus™ FP20 pH/mV
<b>Measuring Range</b>	0 to 14pH -2000 to 2000mV 0 to 100°C	-2 to 16 pH -2000 to 2000mV -5 to 105°C
<b>Accuracy</b>	±0.01pH ±1mV ±0.5°C	±0.01pH ±1mV ±0.3°C
<b>Calibration</b>	Max. 3 points	Max. 5 points

Code	Meter Model	Description	Free Electrode	List Price, £	Offer Price, £
<b>B2B7234</b>	FiveEasy F20 pH/mV	Standard kit	LE438 electrode	500.00	375.00
<b>B2B7236</b>	FiveEasy Plus FP20 pH/mV	Standard kit	LE438 electrode	635.00	476.00
<b>B2B7238</b>	FiveEasy Plus FP20 pH/mV	Bio kit	LE410 electrode	660.00	495.00
<b>B2B7240</b>	FiveEasy Plus FP20 pH/mV	Micro kit	LE422 electrode	670.00	503.00

## SLS Flowgen multiSUB Mini Horizontal Electrophoresis Systems

2  
YEARS



The multiSUB Mini is the smallest multiSUB in the range and ideal for routine molecular biology applications. The small gel size maximises run economy but does not compromise versatility as two tray options are available. Simply by altering the gel tray or comb, this compact unit is capable of resolving up to 64 different samples, prepping 1mL of sample or separating sample bands over a distance of 9cm.

- Available with 70 x 70mm, 70 x 100mm, or with both gel trays
- Economic low gel and buffer volumes
- Small lab bench footprint
- Complete with 2 x 8 sample combs (1mm), loading guides and dams



Specifications	
<b>Dims, w x d x h, mm</b>	90 x 210 x 90
<b>Buffer Volume, mL</b>	225
<b>Bromophenol Blue Migration Rate. cm/hr</b>	~4 - 5 at 80V
<b>Typical Running Conditions</b>	80V, 45-60 minutes

Code	Description	Gel Dims, w x l, mm	Max Capacity	List Price, £	Offer Price, £
<b>MSMINI7</b>	multiSUB Mini 7	70 x 70	32 samples	343.00	206.00
<b>MSMINI10</b>	multiSUB Mini 10	70 x 100	64 samples	342.00	205.00
<b>MSMINIDUO</b>	multiSUB Mini Duo	70 x 70 & 70 x 100	64 samples	366.00	220.00

SLS Flowgen nanoPAC-300P Power Supply

2 YEARS

Ultra compact and economical unit, ideal for use with DNA/RNA (horizontal) and protein (vertical) electrophoresis systems. A simple two step feature allows users to set a programmable change in voltage/ current/time during the run to provide increased versatility. Simply press MODE and program STEP 1 and STEP 2 to the desired setting and then start and the nanoPAC will automatically run the steps in sequence.

- Can be set on a continuous run or timed setting up to 999 minutes
- User friendly interface
- Easily adjustable in 1V and 1mA increments
- Compact size saves bench space
- Two pairs of parallel power terminals, which can run two electrophoresis units simultaneously
- Enhanced in built safety features
- Highly visible 3 digit LED display
- Alarm function
- Wipe clean polycarbonate housing



Code	Max Voltage, V	Max Current, mA	Max Power, W	Output Pairs	Dims, w x d x h, mm	List Price, £	Offer Price, £
NANOPAC-300	300	400	60	2	140 x 191 x 84	418.00	314.00

SLS Flowgen powerPRO 300 Power Supply

2 YEARS

A versatile multi function power supply suitable for a wide range of electrophoresis applications. The powerPRO 300 is the ideal power supply for routine horizontal electrophoresis using multiSUB Mini, Midi and Choice and vertical electrophoresis using omniPAGE Mini.

- 2.4" LCD screen
- Browse preset and saved protocols, store up to 30 programmes with up to 6 steps
- Can be operated at constant voltage, constant current or constant power and
- Pause/resume key allows any run to be temporarily halted and restarted from the same position



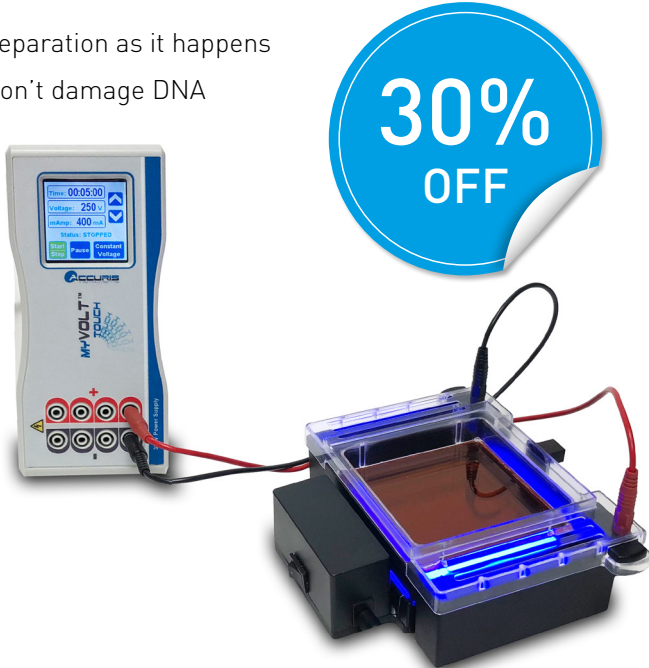
Code	Max Voltage, V	Max Current, mA	Max Power, W	Output Pairs	Dims, w x d x h, mm	List Price, £	Offer Price, £
ELE2600	300	700	150	5	215 x 335 x 104	480.00	360.00

# Accuris myGel InstaView™ and myVolt™ Power Supply Bundle Package



Accuris Instruments has taken innovation to the next level with their new InstaView™ electrophoresis systems. These systems make the whole process of running DNA gels, viewing DNA bands and documenting results easy, all without removing the gel. The InstaView™ Gel Tank accommodates one large (10.5 x 10cm) or one small (10.5 x 6cm) gel tray and is supplied with trays, combs and a leak-proof casting stand. The gel tank lid includes attached power leads which prevent the unit from operating without the lid properly in place. The Accuris myVolt™ Touch is a work horse electrophoresis power supply, ideal for efficient separation of nucleic acids and proteins as well as basic western blotting applications.

- View DNA migration and separation as it happens
- Blue light illumination – won't damage DNA
- Capture high resolution images without removing the gel from the tank
- Complimentary power supply included



Code	Alt Ref	List Price, £	Offer Price, £
B2B8012	E1200-PSP-E	1187.00	831.00

# SLS Lab Basics my-FUGE 12 Place Centrifuge



Eliminate the need to change rotors when switching between microtubes and PCR strips with the unique COMBI-Rotor™ (included) allowing the running of 12 x 1.5/2.0mL microtubes and 4 PCR strips simultaneously. With a fixed speed that produces 2000xg, this centrifuge is perfect for quick spin downs.

- Twice the capacity of most mini centrifuges
- Near silent operation
- Starts and stops with closing/opening of the lid
- Conserves valuable bench space



Code	Max Speed, RPM	Max RCF, xg	Dims, w x d x h, mm	List Price, £	Offer Price, £
B2B7092	5500	2000	146 x 203 x 108	538.00	269.00

## SLS Lab Basics 12 Place Microcentrifuge

2 YEARS



Compact and powerful high-speed centrifuge, ideal for research applications including sedimentation of cells and viruses and isolation of macromolecules such as DNA, RNA, proteins or lipids. It consists of a large LCD display which provides all visual information and a unique cooling design which minimises rotor heating.

- Whisper quiet operation - less than 49dB
- Automatic door lock
- Automatic internal diagnosis
- Polypropylene rotor is fully autoclavable
- Run time: 30 sec - 99 min
- Pulse operation for quick spins
- Sound-alert function
- Over-temperature and over-speed detector
- Supplied with 12 position 1.5/2.0mL microtube rotor



Code	Max Speed, RPM	Max RCF, xg	Dims, w x d x h, mm	List Price, £	Offer Price, £
<b>B2B06204</b>	15000	15100	245 x 255 x 140	1154.00	<b>520.00</b>

## SLS Lab Basics Mini Centrifuge

2 YEARS



Ideal for microfiltration and quick spin downs from the walls and caps of microcentrifuge tubes. The compact design saves bench space and features an easy-open clear lid. Simply close the lid for acceleration and open the lid for deceleration, or alternatively use the on/off switch to control.

- Easy-to-use with dual start/stop function
- Compact design
- Whisper quiet operation
- Ideal for quick spin downs of microtubes and PCR tubes
- Universal voltage
- Rotor change without tools
- Accelerates and brakes in seconds
- Supplied with 8 place 1.5/2.0mL microtube rotor and 16 place (2 x 8 strips) PCR rotor



Code	Max Speed, RPM	Max RCF, xg	Dims, w x d x h, mm	List Price, £	Offer Price, £
<b>B2B06202</b>	7000	2680	160 x 170 x 122	175.00	<b>115.00</b>



# SLS Flowgen Plate Spinner



Rapidly spin down droplets in PCR or microplates to improve PCR yields or give more consistent assay results. The swing out rotor has two plate carriers that rest at a 75° angle. This allows plates to be inserted confidently without sealing tapes or caps. Most samples can be spun down in less than 20 seconds. To end a run, simply open the lid and the automatic, electric brake brings the rotor to a quick, smooth stop in just 4 seconds.

- Unique swing-out rotor design prevents spillage
- Accepts most types of PCR plates
- Capacity: 2 x PCR plates (when stacking skirted PCR plates, max. capacity is 4 plates); 2 x microplates
- Remarkably small footprint



Code	Max Speed, RPM	Max Speed, x g	Dims, w x d x h, mm	List Price, £	Offer Price, £
B2B06236	2550	600	230 x 260 x 197	813.00	440.00

# SLS Flowgen 2D BenchRocker



Designed to provide the precise speeds and tilt angles required for a broad range of molecular and biological mixing applications. The user can adjust both parameters to match the vessel size and the volume of liquid being mixed, yielding optimum results. Provides a gentle wave effect for non-foaming mixing, as is required for most blot washing and gel work. When set to higher speeds and more extreme tilt angles, they produce aggressive agitation for vigorous sample mixing.

- Accepts stackable platforms (clearance = 70mm)
- Adjustable speed and tilt for a wide range of applications
- Dual platform accessory doubles work surface
- Cold room and incubator safe



Code	Speed Range, RPM	Tilt Angle, °	Platform Dims, mm	Dims, w x d x h, mm	List Price, £	Offer Price, £
B2B7080	2 - 30	0 - 30	350 x 300	350 x 300 x 200	832.00	540.00



## SLS Lab Basics Vortex Mixer

2  
YEARS



Compact and stable design with electronic speed control ensures the same speed is maintained at all times, even during changes of load and also features continuous or touch operation. The orbital diameter of 4mm provides effective and efficient mixing inside the sample.

- Quiet and compact stable design
- Continuous or touch operation
- Electronic speed control for constant speed even during changes in load
- Aluminium cast base with silicone feet for excellent stability and vibration damping

52%  
OFF



Code	Speed Range, RPM	Dims, w x d x h, mm	Weight, kg	List Price, £	Offer Price, £
B2B06222	0 - 2500	127 x 160 x 130	3.5	210.00	100.00

## SLS Lab Basics DigiRoll 6 Tube Roller

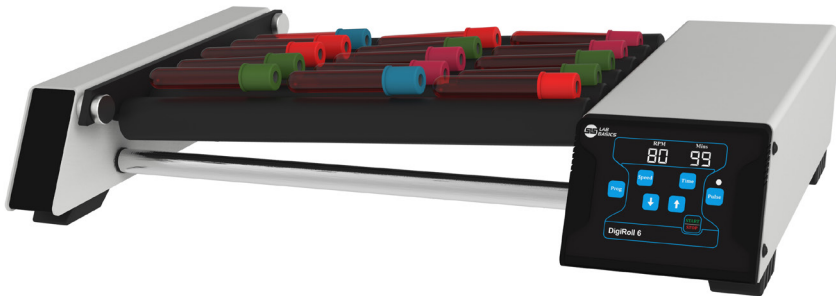
2  
YEARS



6 tube roller providing a rocking and rolling motion for optimum mixing of viscous samples. Equipped with a powerful brushless DC motor for maintenance free long life and quiet operation. Microprocessor controller gives accurate speed under variable load, and the programming feature means the user can save and run up to 9 user defined programs.

- Digital display with soft touch keypad
- IP 21 protection class
- Timer from 1 min to 99 min and infinite mode
- User can set pulse time from 30 to 99 seconds
- Adjustable rollers spacing to hold different diameter tubes
- Stackable design with robust construction

30%  
OFF



Code	Capacity	Speed Range, RPM	Tilt Angle, °	Dims, w x d x h, mm	List Price, £	Offer Price, £
B2B06224	15 x 3/4mL tubes	10 - 80	±3	502 x 301 x 93	473.00	330.00

## SLS Lab Basics Digital Orbital Shaker

5 YEARS

SLS LAB BASICS

A dependable and versatile shaker for a vast range of protocols. Create your own matrix for vessels of all shapes and sizes with hi-lo platform and bungee cords. Instantly adjusts to weight load changes and unbalanced loads with no-stop electronic motor feedback allowing for truly reproducible results.

- Durable ABS construction suitable for use in incubators (excluding CO<sub>2</sub>) and cold rooms within 2 to 40°C; 20 to 80% RH, non-condensing
- Run time: 0 to 74 hours and 59 minutes, 1 second increments or continuous
- Soft start and shut down feature reduces spilling from full vessels
- Designed to handle heavy loads up to 4.5kg
- Overload protection shut-off prevents overloading
- Supplied with skid-free rubber platform mat, 8 x bungee cords, universal hi-lo platform with soft rubber edge bumpers, power adapter (110-240VAC, 50/60 Hz) with 4 interchangeable plug types

31% OFF



Code	Orbit, mm	Speed Range, RPM	Platform Dims, mm	Dims, l x w x h, mm	List Price, £	Offer Price, £
B2B7300	19	20 - 300	279 x 279	314 x 197 x 314	788.00	540.00

## Grant-Bio PSU-10i Orbital Shaking Platform

2 YEARS

grant<sup>o</sup>

The Grant-Bio PSU-10i is a microprocessor controlled shaking platform for mixing bottles, flasks and beakers.

- Continuous or timed operation with automatic switch off
- Reliable and quiet direct drive system
- Automatic load balancing system
- Soft start feature ensures a smooth ramp up
- 2 line LCD display indicates both set and actual shaking speed and set/elapsed time
- Choice of 4 interchangeable platforms to suit different types of vessels
- Can be used in a cold room or incubator
- Integral electronic timer, audible alarm and automatic switch off
- Supplied with FREE universal platform

Plus FREE platform worth £133!

10% OFF



Code	Alt Ref	Speed Range, RPM	Orbit, mm	Max Load, kg	Dims, w x d x h, mm	List Price, £	Offer Price, £
B2B8000	PSU-10i	50 - 450	10	3	220 x 205 x 90	781.00	703.00

## SLS Lab Basics Hotplate Stirrer, 280°C



Stainless steel stirrer with a ceramic coated hotplate which resists corrosion. Features a digital control system, ideal for use in physics, chemistry and biotech labs.

- Heating temperature up to 280°C
- LED display shows temperature and speed
- 50°C HOT warning indicates residual hotplate temperature
- ABS chemical resistant casing
- Includes FREE external temperature sensor PT1000 and support clamp



Code	Stirring Capacity, L	Speed Range, RPM	Max Temp, °C	Plate Ø, mm	List Price, £	Offer Price, £
<b>B2B06238</b>	3	100 - 1500	280	135	365.00	<b>195.00</b>

## SLS Lab Basics Hotplate Stirrer, 340°C



Stirrer hotplate with ceramic coated stainless steel plate, widely used in chemical synthesis, physical and chemical analysis, bio-tech labs.

- Simple running interface easy to use and program, automatically identifies temperature sensor PT1000 and transfers to PT1000 operation mode
- LCD display shows target and actual temperatures, as well as set and actual speed
- Brushless DC motor - maintenance free and explosion-proof
- Fully closed assembly guarantees safety and long service life, effectively prevents the liquid damage
- HOT warning indicates residual hotplate temperature
- Includes FREE external temperature sensor PT1000 and support clamp



Code	Stirring Capacity, L	Speed Range, RPM	Max Temp, °C	Plate Ø, mm	List Price, £	Offer Price, £
<b>B2B06240</b>	20	100 - 1500	340	135	638.00	<b>310.00</b>

## SLS Flowgen Digital Dry Baths



Digital dry baths with accurate “set and walk away” digital temperature selection, eliminating the need for external thermometers and repetitive “fine tuning” of a temperature control knob. Simply enter the desired temperature on the digital touchpad and the dry bath provides accurate temperature with real time monitoring that continuously maintains the selected temperature.

- Assorted blocks for a wide variety of tube sizes sold separately  
- see SLS website for full list of accessories
- Include an easy to use block lifter with a temperature insulated handle
- Built-in user re-calibration function, to guarantee long term temperature accuracy
- Temperature range: ambient +5 to 150°C
- Temperature accuracy:  $\pm 0.2^{\circ}\text{C}$ , increments:  $0.1^{\circ}\text{C}$ , uniformity:  $\pm 0.2^{\circ}\text{C}$
- Digital timer is built into the touchpad display (1 to 999 minutes)



Code	No. Block Positions	Dims, w x d x h, mm	List Price, £	Offer Price, £
<b>B2B7088</b>	1	200 x 230 x 80	526.00	<b>316.00</b>
<b>B2B7090</b>	2	220 x 260 x 80	656.00	<b>394.00</b>

## SLS Lab Pro Safevac Aspiration System



- Designed for laboratory waste recovery and separation of liquid and solid
- Vacuum power can be set to different levels to achieve 1 - 15mL/s aspirating speed
- Sensitive level sensor to prevent liquid overflow during operation
- Waste bottle, tubing and handle are fully autoclavable
- Wide range of adapters to fit tubes and microplates



Code	Vacuum Range, mbar	Vacuum Speed, mL/S	Volume, L	Dims, w x d x h, mm	List Price, £	Offer Price, £
<b>B2B06242</b>	0 - 600	1 - 15	4	180 x 240 x 450	1320.00	<b>620.00</b>



## SLS Lab Basics Inverso TC100 Inverted Microscopes

1  
YEAR

SLS LAB  
BASICS

Ideal for the typical working laboratory and is built to a high-quality specification. It is robust enough to withstand the rigours of constant daily use and with a quintuple position nose-piece fitted as standard, it is ideally suited for multiple observation techniques and/or magnifications.

45%  
OFF

- Trinocular head inclined at 45°
- Eyepieces: 10/20mm wide field
- Objectives: 4X, 40X plan-achromatic LWD/10X, 20X, 40X Phase Contrast
- Condenser: NA 0.3 (removable), working distance 72mm
- Stage: 160 x 250mm with additional mechanical stage [2 interchangeable stage plates] stage extending board
- Focusing: coaxial coarse and fine
- Illumination: 3W LED
- Epi fluorescence module adds blue excitation (460-490nm) and green excitation (480-550nm)



Code	Description	List Price, £	Offer Price, £
<b>B2B06416</b>	With mechanical stage LED	3635.00	2000.00
<b>B2B06418</b>	With epi fluorescence module	11655.00	6410.00

## SLS Lab Basics Tablet Microscope Camera

SLS LAB  
BASICS

Tablet camera designed for microscopy applications with a high-definition 9.7" colour LCD touchscreen. Equipped with software that allows the user to preview an image, set the white balance, capture images and videos as well as having measurement and annotation capabilities.

35%  
OFF

- Crystal display, RK3066 dual-core 1.5Hz CPU
- Touch-screen operation, can be used as a small computer
- Includes Wi-Fi and Bluetooth wireless networking for easy file, HDMI output

Supplied with FREE  
C-mount adapter for  
SLS Lab Basics Inverso  
microscopes when  
camera purchased  
with microscope,  
worth £153!



Code	Camera	List Price, £	Offer Price, £
<b>B2B06420</b>	15fps at 1024 x 768; 1/2.5 (4:3) 5mpx CMOS	1004.00	650.00

## SLS Lab Basics Compact Precision Balances



- Accurate, high quality, attractive, and stackable units
- Perfect for applications where portability or easy storage are paramount
- External calibration
- Supports multiple weighing units like counting, % weighing
- Hygienic and rustproof stainless steel pan
- Security slot at the back for wire-locking to prevent theft
- Power supply: AC adaptor or 4 AA size dry batteries (batteries not included)



Code	Capacity, g	Readability, g	List Price, £	Offer Price, £
<b>B2B06024</b>	310	0.01	273.00	<b>137.00</b>
<b>B2B06026</b>	3100	0.1	273.00	<b>137.00</b>



### SLS Select Lens Cleaning Tissue

Ideal solution for cleaning lenses and other optical surfaces made from glass, quartz or plastic. **Supplied in packs of 50**

Code	Dims, mm	Offer Price, £
<b>B2B06248</b>	80 x 100	<b>5.12</b>

## SLS Lab Pro P-Series Precision Balances



- One touch automatic calibration
- Compact, B5 size footprint
- Fast, 1 second stabilisation
- Large bright vacuum fluorescent display
- Shock absorber function
- Multiple weighing units
- GLP/GMP/GCP/ISO compliant
- Statistical calculation function
- ACAI – Automatic Counting Accuracy Improvement
- Dims, w x d x h:  
193 x 262.5 x 85.5mm



Code	Capacity, g	Readability, g	Plate Ø, mm	List Price, £	Offer Price, £
<b>B2B06114</b>	122	0.001	130	899.00	<b>450.00</b>
<b>B2B06116</b>	220	0.001	130	927.00	<b>464.00</b>
<b>B2B06254</b>	320	0.001	130	960.00	<b>480.00</b>
<b>B2B06118</b>	520	0.001	130	1098.00	<b>549.00</b>
<b>B2B06120</b>	1220	0.01	150	899.00	<b>450.00</b>
<b>B2B06122</b>	2200	0.01	150	927.00	<b>464.00</b>
<b>B2B06256</b>	3200	0.01	150	960.00	<b>480.00</b>
<b>B2B06290</b>	5200	0.01	150	1098.00	<b>549.00</b>

## SLS Lab Pro A-Series Analytical Balances

5  
YEARS

SLS LAB  
PRO

- Compact footprint
- Breeze break with rotary doors that slide behind the balance and can be removed with one touch
- Ideal for applications where space is at a premium
- Reverse backlit LCD display for easy to read weighing results
- Statistical calculation function eliminates the need for a stats printer
- Standard RS-232C
- Fast, compact SHS sensor, response time ~2 seconds

45%  
OFF

Code	Capacity, g	Readability, mg	Calibration	List Price, £	Offer Price, £
<b>B2B06106</b>	102	0.1	External	908.00	499.00
<b>B2B06250</b>	102	0.1	Internal	1103.00	607.00
<b>B2B06108</b>	152	0.1	External	1021.00	562.00
<b>B2B06110</b>	152	0.1	Internal	1254.00	690.00
<b>B2B06112</b>	252	0.1	External	1164.00	640.00
<b>B2B06252</b>	252	0.1	Internal	1435.00	789.00



## OHAUS Navigator™ Portable Balances

Rugged, multi-purpose balances for a wide range of general weighing applications, designed for accuracy and repeatability in essential weighing applications. Improved productivity with fast stabilisation time and mechanical overload protection safeguards the balance increasing durability.



2  
YEARS



Code	Alt Ref	Model	Capacity, g	Readability, g	Pan Dims, mm	List Price, £	Offer Price, £
<b>B2B8132</b>	30615581	NV123	120	0.001	Ø 93	236.00	165.00
<b>B2B8134</b>	30615582	NV223	220	0.001	Ø 93	264.00	185.00
<b>B2B8136</b>	30615583	NV323	320	0.001	Ø 93	278.00	195.00
<b>B2B8138</b>	30456382	NV222	220	0.01	Ø 145	239.00	167.00
<b>B2B8140</b>	30456383	NV422	420	0.01	Ø 145	246.00	172.00
<b>B2B8142</b>	30456384	NV622	620	0.01	Ø 145	251.00	176.00
<b>B2B8144</b>	30615584	NV1202	1200	0.01	190 x 144	256.00	179.00
<b>B2B8146</b>	30615585	NV2202	2200	0.01	190 x 144	268.00	188.00
<b>B2B8148</b>	30615586	NV3202	3200	0.01	190 x 144	285.00	200.00
<b>B2B8150</b>	30456385	NV221	220	0.1	190 x 144	147.50	103.00
<b>B2B8152</b>	30456386	NV621	620	0.1	190 x 144	170.50	119.00
<b>B2B8154</b>	30456387	NV1201	1200	0.1	190 x 144	196.50	138.00
<b>B2B8156</b>	30456388	NV2201	2200	0.1	190 x 144	207.00	145.00
<b>B2B8158</b>	30456389	NVT2201	2200	0.1	230 x 174	219.00	153.00
<b>B2B8160</b>	30456390	NVT4201	4200	0.1	230 x 174	229.00	160.00
<b>B2B8162</b>	30456391	NVT6201	6200	0.1	230 x 174	241.00	169.00
<b>B2B8164</b>	30615587	NVT10201	10200	0.1	230 x 174	251.00	176.00
<b>B2B8166</b>	30456392	NVT2200	2200	1	230 x 174	152.50	107.00
<b>B2B8168</b>	30456393	NVT6200	6200	1	230 x 174	175.50	123.00
<b>B2B8170</b>	30456394	NVT12000	12000	1	230 x 174	233.00	163.00
<b>B2B8172</b>	30456395	NVT22000	22000	1	230 x 174	256.00	205.00

- Backlit liquid crystal display (LCD)
- AC adaptor (included) or 4 x C batteries (not included)
- RS232, USB, or ethernet (available as accessories)
- Constructed of ABS housing, stainless steel pan, transportation lock, slip resistant and adjustable feet, levelling bubble
- Design features include menu and calibration lock switch, mechanical and software overload/underload protection, stability indicator, low battery indicator, auto shut off, user selectable print options, user selectable communication settings





# GUARDIAN™ SERIES

## Hotplate Stirrers

### Featuring OHAUS Smart technology

Designed with superior heating and stirring performance, the Guardian Series combines durability and affordability to reduce the high costs of doing business in science labs.

- From intelligent performance and superior safety to affordable equipment for everyday use.
- Advanced safety features, reducing the chance of accidents: including SmartPresence™, SmartLink™, SmartRate™, SmartHeat™, SafetyHeat™, and SmartHousing™.
- The bright LCD screen displaying temperature, speed and time\*.

**Think Safer. Think SMART.**



\* On selected Guardian models



Guardian™ 7000



Guardian™ 5000



Guardian™ 3000

ON OFFER



COMING SOON

Guardian™ 2000

All the Guardian ranges and details can be found on the SLS website

[www.scientifclabs.co.uk/brand/OHAUS](http://www.scientifclabs.co.uk/brand/OHAUS)

**Ingeniously Practical**

[www.OHAUS.com](http://www.OHAUS.com)

# Benchmark OS40L Overhead Stirrer

Benchmark's overhead stirrers feature high torque and advanced digital microprocessor control for smooth mixing of low and medium viscosity samples. Speed and run time are accurately set and monitored on the LCD screen. Supplied with a 4 arm stainless steel propeller - additional steel and Teflon accessories are available. A feed-through chuck holds accessory shafts firmly in place and is easily tightened and loosened without tools. The overhead stirrers are protected from damage by sensors that shut down operation in the case of high viscosity or obstruction, while a splash cover protects the connection mechanism from potential corrosion. Unlike most mixers, the Benchmark series is also supplied with a support stand and mounting hardware. The stirrer easily and securely attaches to the stand for compatibility with a variety of vessels, up to 24 inches high.

- LCD control panel
- Includes complete stand assembly
- Compact and quiet
- Digital accuracy and convenience



Code	Capacity, L	Max Torque at Stirrer Shaft, Ncm	Power, W	Max Viscosity, mPas	Speed Range, RPM	List Price, £	Offer Price, £
B2B8014	40	60	100	50000	30-2200	1349.00	809.00

# SLS Flowgen Incu-Shaker™ Incubated Shaker

Compact shaking incubator with a remarkably small footprint. Accepts several platforms and a variety of flasks, tubes and other common vessels. The standard platform (included) features a non-slip, rubber coated surface, ideal for tissue culture flasks, Petri dishes and staining trays.

- Extremely compact, just 280mm wide
- Touch screen control over time, speed and temperature
- Horizontally circular 19mm orbit for aeration & mixing
- Instantly exchange flask clamps with MAGic Clamp™ accessories
- Program STEP feature for linking consecutive programs



Code	Temp Range, °C	Speed Range, RPM	Orbit, mm	Dims, w x d x h, mm	List Price, £	Offer Price, £
B2B7084	Ambient +5 - 70	30 - 300	19	280 x 480 x 330	4065.00	1995.00

# Benchmark UV Clave™ UltraViolet Chamber

2 YEARS

Short-wave UV light is an effective method for the disinfection of surface DNA, RNA and microorganisms. With the UV Clave™ chamber, highly focused UV irradiation is used to disinfect tools, vessels and other research items, eliminating up to 99% of surface contamination. Unlike most UV chambers, the UV Clave™ includes powerful UV-C bulbs on both the top and bottom of the chamber. When combined with our proprietary shelf that allows for >90% of UV-C light transmission and highly reflective chamber walls, the result is true 360° exposure with no blind spots.

- Improves quality of PCR research by reducing potential contaminants
- Exposure time is adjustable
- Integrated auto shut-off prevents illumination when the door is open
- Multiple lamps and reflective chamber walls provide true 360° irradiation
- Inactivates DNA, RNA, viruses & bacteria on PCR vessels
- Chamber comes with 2 wire and 1 transparent shelf



Code	Dims, w x d x h, mm	List Price, £	Offer Price, £
B2B7256	292 x 267 x 400	512.00	333.00

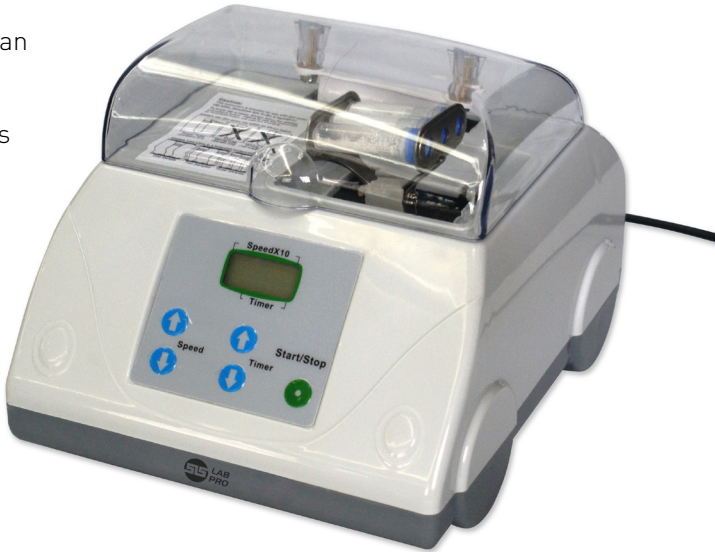
# SLS Lab Pro BeadBug Microtube Homogeniser

2 YEARS

High energy benchtop homogeniser that sets the performance standard for personal sized cell disruption and lysis instruments. The optimised mixing motion causes rapid cell disruption through constant high velocity impact from the hardened micro-beads chosen specifically for your sample type. Developed for samples too tough to be homogenized in a common lab vortexer, the BeadBug™ provides a convenient and economical alternative to the traditional, high capacity homogenisers on the market today.



- Extremely powerful mixing for lysis, grinding or homogenisation
- Faster and more effective than tissue grinders
- Homogenise up to 3 samples in disposable 2mL screw cap microtubes
- Extremely compact
- Eliminates the cross contamination



Code	Speed Range, RPM	Capacity	Dims, w x d x h, mm	List Price, £	Offer Price, £
B2B7094	2800 - 4000	3 x 2mL	170 x 210 x 135	1013.00	608.00

## SLS Lab Pro Type 2 and 3 Water Purification Systems

1  
YEAR

SLS LAB  
PRO

SLS Lab Pro water purification system available in two water quality versions:

**Type 3** – Primary grade water (reverse osmosis) suitable for glass washers, autoclave feed, stability chambers and steam/humidity generators.

**Type 2** – General laboratory grade water (deionisation) for buffer, reagent and media preparation, sample dilution, general chemistry and teaching applications.

- Low cost, one box solution
- Wall or bench mounted
- 50% recovery rate keeps water costs to a minimum
- Energy consumption <60W
- Unique disposable RO maintains peak efficiency
- Consumables changed in seconds
- Built-in 35L reservoir
- Minimal water wastage
- Mercury free UV

Installation  
service  
available  
- please enquire

40%  
OFF



Specifications	
Type 2 Water Quality, MΩ-cm	1 to 15
Type 3 Water Quality, μS/cm	<40
TOC (Type 2 only), ppb	≤5
Organics Rejection Rate (Type 3 only), %	<99
Feed Water Pressure, bar	0.1 to 6
Dims, w x d x h, mm	485 x 500 x 330
Weight, kg	20

Code	Model	Make Up Rate, L/hr	List Price, £	Offer Price, £
B2B7316	Choice 10 type 2 (DI)	10	4340.00	2604.00
B2B7074	Choice 10 type 2 (DI) UV	10	4333.00	2600.00
B2B7072	Choice 10 type 3 (RO)	10	3757.00	2254.00
B2B7314	Choice 10 type 3 (RO) UV	10	4004.00	2402.00
B2B06262	Choice 20 type 2 (DI)	20	4339.00	2603.00
B2B06264	Choice 20 type 2 (DI) UV	20	4435.00	2661.00
B2B06258	Choice 20 type 3 (RO)	20	4250.00	2550.00
B2B06260	Choice 20 type 3 (RO) UV	20	4333.00	2600.00



## SLS Lab Pro Analogue Ultrasonic Baths

3  
YEARS



20%  
OFF

With capacities from 1.5L to 25L, the SLS Lab Pro analogue ultrasonic baths offer simple analogue timer and temperature controls, providing entry level ultrasonic baths ideal for cleaning small items for use in a wide range of applications. Supplied with a stainless steel basket and plastic lid. B2B8280 has a non-adjustable heater element.

- Ambient to 70°C temperature control on heated models
- 0 – 15 minute timer
- Compact and user friendly



Code	Capacity, L	Heated	Overall Dims, w x d x h, mm	Int Dims, w x d x h, mm	List Price, £	Offer Price, £
<b>B2B8278</b>	1.5	No	180 x 160 x 190	150 x 140 x 100	305.00	244.00
<b>B2B8280</b>	1.5	Yes	180 x 160 x 190	150 x 140 x 100	356.00	285.00
<b>B2B8282</b>	2.5	No	270 x 170 x 210	240 x 140 x 100	390.00	312.00
<b>B2B8284</b>	2.5	Yes	270 x 170 x 210	240 x 140 x 100	451.00	361.00
<b>B2B8286</b>	4.5	Yes	330 x 180 x 275	300 x 150 x 150	801.00	641.00
<b>B2B8288</b>	13	Yes	375 x 345 x 275	330 x 300 x 150	1015.00	812.00
<b>B2B8290</b>	25	Yes	550 x 345 x 365	500 x 300 x 200	1367.00	1094.00

## SLS Lab Pro Digital Ultrasonic Baths

3  
YEARS



25%  
OFF

With capacities from 4.5 to 25L, the SLS Lab Pro digital ultrasonic baths offer precise and accurate process control of time, temperature and ultrasonic power through the LCD control panel. Incorporating frequency LEAP technology for homogeneous, repeatable ultrasonic activity throughout the tank. The SD card port means that each cycle can be validated for full process traceability via transfer to computer and provided software. Supplied with a stainless steel basket and plastic lid.

- Ambient to 70°C temperature control
- 0 – 99 minute timer
- Degas mode
- Energy saving mode
- Consistent cleaning results every time



Code	Capacity, L	Overall Dims, w x d x h, mm	Int Dims, w x d x h, mm	List Price, £	Offer Price, £
<b>B2B8292</b>	4.5	345 x 200 x 265	300 x 150 x 150	1062.00	797.00
<b>B2B8294</b>	9.5	550 x 185 x 265	500 x 140 x 150	1318.00	989.00
<b>B2B8296</b>	12.5	345 x 285 x 365	295 x 245 x 200	1515.00	1136.00
<b>B2B8298</b>	13	375 x 345 x 265	330 x 300 x 150	1527.00	1145.00
<b>B2B8300</b>	17.5	375 x 345 x 365	330 x 300 x 200	1672.00	1254.00
<b>B2B8302</b>	25	550 x 345 x 365	500 x 300 x 200	1965.00	1474.00

## SLS Lab Pro Insulated Eco Drying Cabinets



SLS Lab Pro eco drying cabinets are designed with energy efficiency in mind, utilising thermal insulation and a user programmable digital control, for drying laboratory glassware, surgical instruments or media.

- Energy saving thermal insulation to 5 sides
- Low power consumption
- Easy accessible control system
- Digital temperature controller
- Digital 7 day 24hr timer
- Economical to run / lower running costs
- Dual circulating fans and easy roll mounting wheels on floor standing units.
- Corrosion free stainless steel internal chamber
- Anti-microbial powder coat paint to external surfaces
- Temperature range of 30 to 80°C



Code	Type	Capacity, L	Airflow	Door Style	Dims, w x d x h, mm	List Price, £	Offer Price, £
<b>B2B06326</b>	Bench	113	Static	Sliding	765 x 450 x 732	<b>1503.00</b>	<b>1127.00</b>
<b>B2B06324</b>	Bench	227	Static	Sliding	1000 x 550 x 807	<b>1843.00</b>	<b>1382.00</b>
<b>B2B06328</b>	Floor standing	426	Fan-assisted	Hinged	635 x 650 x 1870	<b>3525.00</b>	<b>2644.00</b>
<b>B2B06330</b>	Floor Standing	885	Fan-assisted	Hinged	1168 x 650 x 1870	<b>4750.00</b>	<b>3563.00</b>

## SLS Lab Pro S500 Mini Recirculating Chiller



With a sophisticated touchscreen controller and 500W cooling power the S500 Mini is ideal for many laboratory applications.

Built to save space, the Mini is about the size of the average desktop PC.

- A touchscreen interface
- Universal 90-260 VAC input voltage and 50/60Hz input frequency suitable for use all over the world
- Variable speed compressor and fan
- Whisper quiet
- Continual adjustment of refrigerant mass flow rate to control duty
- Water system constructed from 12mm push fit fittings
- USB port for downloading system data



Code	Temp Range, °C	Cooling Capacity, kW	Flow Rate, L/min	List Price, £	Offer Price, £
<b>B2B06404</b>	-10 to +60	0.5	3.5	<b>3450.00</b>	<b>2588.00</b>

## SLS Lab Pro Water Baths

Digital water baths providing a stable temperature environment with digital PID temperature control for precision with an LED display. Controls feature auto alarm settings, illuminated on/off switch, heater and over temperature indications.

- Temperature range: ambient +5 to 99°C
- Over temperature alarm with heater cut off
- Touch pad controls with easy wipe surface
- Painted surfaces feature antibacterial protection, immersed components are corrosion resistant
- Free additional year warranty (4 years total)



### Unstirred

- Sensitivity:  $\pm 0.2^{\circ}\text{C}$ , uniformity:  $\pm 0.1^{\circ}\text{C}$
- Supplied with clear, polycarbonate lid

Code	Capacity, L	Ext Dims, w x d x h, mm	Int Dims, w x d x h, mm	Drain Outlet	List Price, £	Offer Price, £
<b>B2B7076</b>	2	332 x 185 x 135	300 x 150 x 65	No	<b>486.00</b>	<b>365.00</b>
<b>B2B06266</b>	4	332 x 185 x 290	300 x 150 x 150	No	<b>527.00</b>	<b>395.00</b>
<b>B2B06268</b>	14	361 x 332 x 290	325 x 300 x 150	No	<b>619.00</b>	<b>464.00</b>
<b>B2B06270</b>	22	538 x 322 x 290	500 x 300 x 150	Yes	<b>691.00</b>	<b>518.00</b>
<b>B2B7078</b>	28	538 x 332 x 290	500 x 300 x 200	Yes	<b>756.00</b>	<b>567.00</b>



### Stirred

- Sensitivity:  $\pm 0.05^{\circ}\text{C}$ , uniformity:  $\pm 0.01^{\circ}\text{C}$
- Robust thermostirrer constructed from stainless steel for durability
- Low water level is indicated and heating is automatically suspended with an automatic restart when the bath is filled
- Can be set for water temperature or a combination of temperature and time
- Timer programmable to commence once a preset temperature is reached and setting retained once unit is turned off

Code	Capacity, L	Ext Dims, w x d x h, mm	Int Dims, w x d x h, mm	List Price, £	Offer Price, £
<b>B2B06272</b>	8	271 x 332 x 170	129 x 300 x 150	<b>891.00</b>	<b>668.00</b>
<b>B2B06274</b>	14	361 x 332 x 170	219 x 298 x 150	<b>914.00</b>	<b>713.00</b>
<b>B2B06276</b>	22	537 x 332 x 170	395 x 298 x 150	<b>963.00</b>	<b>751.00</b>

## SLS Lab Basics Mini Vacuum Pumps

1  
YEAR



Single-head, dry-running devices used in a wide range of laboratory applications. They transfer, compress and pump down without contamination.

- 100% oil-free transfer
- PTFE coated version for slightly aggressive or corrosive gases and vapours
- Maintenance-free
- High level of gas tightness
- IP20 motor protection
- Silencer fitted to outlet port
- 6mm hosetail on inlet

UP TO  
**40%  
OFF**



Code	Diaphragm Material	Delivery, L/min	Ultimate Vacuum, mbar	List Price, £	Offer Price, £
<b>B2B06244</b>	EPOM rubber	6	100	325.00	<b>205.00</b>
<b>B2B06246</b>	PTFE coated	5.5	160	383.00	<b>230.00</b>

## Spex® Jenway® 7205 Series UV/VIS Spectrophotometers

2  
YEARS



**spex**  
jenway

The 72 series spectrophotometers offer measurement modes for single wavelength with basic absorbance and % transmittance; concentration calculated using a standard or a factor; optical density; quantitation with the ability to create a calibration curve using up to 6 standards and 3 replicates; full spectrum scanning and kinetics where up to 3 wavelengths can be measured simultaneously. Leverage diode array technology to produce exceptionally fast results.

- Colour touchscreen user interface with 4" display
- Large sample chamber
- Sample chamber lid can also be left open during measurements which is ideal for samples in tall test tubes
- Scanning diode array technology; fast scan speed
- Small footprint and lightweight
- Multiple USB ports for data storage and printer connectivity
- Absorbance: -0.3 to 2.5A
- Wavelength accuracy/ reproducibility:  $\pm 2.0\text{nm}$

**30%  
OFF**



Code	Alt Ref	Light Source	Wavelength Range, nm	Dims, w x d x h, mm	List Price, £	Offer Price, £
<b>B2B06776</b>	720501	Xenon	198 - 800	212 x 422 x 120	2518.00	<b>1763.00</b>



## Spex® Jenway® Genova Plus Spectrophotometer

3  
YEARS

spex  
jenway

A UV/visible spectrophotometer dedicated to life science analysis which can also be used as a standard spectrophotometer. It allows the measurement of DNA concentrations and purity ratios using wavelengths recorded at 260, 280 and 230nm, with an optional correction at 320nm. Pre-programmed with Bradford, Lowry, Biuret, BCA and Direct UV methods for protein analysis, and has an OD measurement mode enabling users to measure optical density at 600nm for cell harvesting. This instrument can also be used as a standard spectrophotometer with measurement modes for photometrics, concentration, multi-wavelength, spectrum scanning, quantitation and kinetics.

- Pre-programmed for DNA/RNA analysis
- DNA purity scan applies across the entire wavelength range
- Protein methods come pre-loaded
- Small footprint
- Save methods and results to USB memory stick
- Fitted with micro-cuvette holder, supplied with 10x10mm cuvette holder, pack 100 disposable micro-cuvettes, instruction manual, universal power supply, USB memory stick

30%  
OFF



Code	Alt Ref	Light Source	Wavelength Range, nm	Absorbance Range, A	Dims, w x d x h, mm	List Price, £	Offer Price, £
B2B8024	736501	Xenon	198 - 100	-0.3000 - 2.5	275 x 400 x 220	4421.00	3095.00

## PCRmax Alpha Cyclers 1

2  
YEARS



PCRmax

Compact and feature driven entry level PCR machines with ease of use and performance at their core. Available with 1 96-well block chassis, the Alpha Cyclers interface is Android based, with a large HD touchscreen for responsive control of the software. Ideal for multi user environments, users can make any USB device their own login key allowing them to use multiple systems in different locations like a personal unit. Programs can be easily stored, transferred, protected and locked while running.

- Remote monitoring can be set to check system performance every run and notify end user of performance impacting abnormality
- Active sample cooling for sharper amplification and minimal non-specific amplification
- Program wizard to generate a protocol specific to your sequence, template source and amplicon length in seconds or optimise your protocol
- Report generated on run conditions and state following completion of protocol
- Gradient function – allowing for simplified temperature optimisation, no matter the block chosen

30%  
OFF



Code	Alt Ref	Supplied with	Dims, w x d x h, mm	List Price, £	Offer Price, £
B2B8030	93945-02	96 well block	260 x 430 x 200	4053.00	2837.00

## SLS Lab Pro Fan Convection Ovens



Chamber is bright polish stainless steel lagged with high efficiency thermal insulation. Digital temperature control up to 250°C with program feature run back timer. Over temperature auto set and over temperature protection. Single insulated door, lockable with 2 point door engagement for an even seal.

- Door chime when left open
- Temperature range: ambient +5 to 250°C
- PID digital LED display showing actual or set temperature, resolution 0.1°C
- Temperature fluctuation  $\pm 0.4$  @ 37°C/variation  $\pm 1.8$  @ 37°C
- Run back timer with indicator and end messaging 00:01 to 99:59 (hh:mm)
- Fan convection from 0% variable to 100% for forced air circulation
- Temperature sensor fail alarm with error reporting
- Perforated stainless steel shelves included with adjustable runners



Code	Capacity, L	No. of Shelves	Shelf Positions	Int Dims, w x d x h, mm	Ext Dims, w x d x h, mm	List Price, £	Offer Price, £
<b>B2B8348</b>	60	2	5	400 x 400 x 360	600 x 605 x 720	1583.00	1266.00
<b>B2B8350</b>	110	2	8	400 x 450 x 620	600 x 660 x 980	2000.00	1600.00
<b>B2B8352</b>	250	3	10	600 x 510 x 800	800 x 720 x 1160	2500.00	2000.00

## SLS Lab Pro Laboratory Incubators



Chamber is bright polish stainless steel lagged with high efficiency thermal insulation. Digital temperature control up to 80°C with program feature run back timer. Over temperature auto set and Class 1 over temperature protection. Single insulated door, lockable with 2 point door engagement for an even seal.

- Door chime when left open
- Silicone door seal
- Inner clear polycarbonate door
- Temperature range: ambient +5°C to 80°C
- PID digital, LED display showing actual or set temperature, resolution 0.1°C
- Temperature fluctuation:  $\pm 0.4$  @ 37°C/variation:  $\pm 0.8$  @ 37°C
- Run back timer with indicator and end messaging 00:01 to 99:59 (hh:mm)
- Gravity natural convection
- Temperature sensor fail alarm with error reporting
- Perforated stainless steel shelves included with adjustable runners



Code	Capacity, L	No. of Shelves	Int Dims, w x d x h, mm	Ext Dims, w x d x h, mm	List Price, £	Offer Price, £
<b>B2B8354</b>	60	2	400 x 400 x 360	600 x 605 x 720	1433.00	1146.00
<b>B2B8356</b>	110	2	400 x 450 x 620	600 x 660 x 980	1833.00	1466.00
<b>B2B8358</b>	250	3	600 x 510 x 800	800 x 720 x 1160	2833.00	2266.00

## SLS Lab Pro Statebourne Biorack Storage Refrigerators

5  
YEARS



The Biorack series of refrigerators provide highly efficient storage of bulk quantities of cryovials. Racking systems housed within these ultra low loss cryogenic refrigerators enable users to store large quantities of biomedical material over long periods of time, safe in the knowledge that storage temperatures even in the vapour phase, will be below  $-190^{\circ}\text{C}$ .

- Advanced super insulation and ultra high vacuum techniques allow storage times between refills of up to 6 months
- Supplied complete with racks and polycarbonate cryoboxes
- Ultra-low evaporative losses
- Compatible with all major cryobox brands
- Heavy duty lockable enclosure offers excellent security
- Liquid or vapour phase option available
- Temperature data logging device available
- Storage of 96 well plates, straws, 5mL tubes, blood bags, canes and cord blood bags

UP TO  
**25%  
OFF**

Supplied with  
**FREE roller base  
and face visor -  
worth up to  
£646!**



Specifications	B2B8360	B2B8362	B2B8364	B2B8366
LN <sub>2</sub> Liquid Phase Capacity, L	35	85	131	160
LN <sub>2</sub> Vapour Phase Capacity, L	14	25	25	25
Evaporation Rate, L/day	0.3	0.63	0.63	0.63
Static Holding Time, days	117	135	208	254
Working Time, days	73	84	130	158
Weight (empty), kg	19	42	46	64
Weight (full), kg	47	110	152	193
Overall Dims, h x Ø, mm	710 x 480	738 x 646	913 x 646	1027 x 648
Neck Ø, mm	120	216	216	216
2mL Vial Capacity	750	3000	4800	6000

Code	Model	Supplied with	List Price, £	Offer Price, £
<b>B2B8360</b>	Biorack 750	5 x racks, 30 x 5 x 5 cryoboxes	2933.00	<b>2225.00</b>
<b>B2B8362</b>	Biorack 3000	6 x racks, 30 x 10 x 10 cryoboxes	4425.00	<b>3320.00</b>
<b>B2B8364</b>	Biorack 4800	6 x racks, 48 x 10 x 10 cryoboxes	5545.00	<b>4160.00</b>
<b>B2B8366</b>	Biorack 6000	6 x racks, 60 x 10 x 10 cryoboxes	5992.00	<b>4495.00</b>

## Haier Biomedical HLR-310F Laboratory Refrigerator



Upright laboratory 310L capacity refrigerator with precise temperature control and adjustable set point from 3 to 16°C. Microprocessor controller with LED display and multiple alarms. Access port, high-strength glass shelves, lock and USB interface as standard. Environmentally-friendly hydrocarbon refrigeration technology to reduces energy consumption.

- 3 to 16°C adjustable set point with one key - flexible and adaptable to meet your needs
- Internal temperature variation is within 3°C to professionally keep temperature uniformity
- Include high and low temperature alarms, door open alarm
- Tempered glass shelves



Code	Temp Range, °C	Capacity, L	Dims, w x d x h, mm	List Price, £	Offer Price, £
<b>B2B7292</b>	3 - 16	310	605 x 600 x 1870	1800.00	<b>1260.00</b>

## Haier Biomedical HYC-118 Pharmacy Refrigerator



Underbench pharmacy refrigerator with solid door, with microprocessor control, digital display and temperature adjustment with an increment of 0.1°C. HC controller with LED display and multiple alarms. Access port as standard.



- Audible buzzer and visible flashing light alarms
- Three alarm functions: high/low temperature, door ajar, and sensor error
- Forced air cooling for better cabinet temperature uniformity
- Auto defrost
- Optimised refrigeration system, utilising high-efficiency HC compressor significantly reduces energy consumption, HC refrigerants are natural non-toxic and more environmentally friendly



Code	Temp Range, °C	Capacity, L	Dims, w x d x h, mm	List Price, £	Offer Price, £
<b>B2B7294</b>	2 - 8	118	597 x 635 x 810	1270.00	<b>889.00</b>



## Haier Biomedical Freezers

-25°C biomedical freezers with manual defrost and internal drawers. Reliable, energy-efficient and environmentally friendly HC refrigeration. Featuring microprocessor controller, LED display with battery backup, alarm functions and lock.

- Efficient hydrocarbon (HC) compressor and optimised refrigeration system, with low power consumption
- Completely green refrigeration solution
- Low noise
- Secure and safe, suitable for multiple users with mechanical lock plus lock catch
- Microprocessor electronic temperature controller
- LCD digital temperature display with display precision is 0.1°C
- Temperature range: -10 to -25°C
- Multiple alarms including high and low temperature, sensor error, power failure, door ajar, high ambient and remote alarm
- Standard access port on the left side, which is convenient for users to test independently
- High density foam insulation for rigidity and stable storage temperature
- Underbench (92L) or upright (262L) models



Code	Model	Capacity, L	Dims, w x d x h, mm	No. of Drawers	List Price, £	Offer Price, £
<b>B2B7298</b>	DW-25L92	92	640 x 610 x 810	3	1021.00	766.00
<b>B2B7296</b>	DW-25L262	262	700 x 705 x 1665	7	2035.00	1425.00

## CoolMed Fridges & Freezers

CoolMed are a British brand with expertise in medical refrigeration. They pride themselves on quality and value for money striving to provide a fast efficient service with expert professionals ready to assist your every need. CoolMed are working towards becoming the first Carbon Neutral medical refrigerator manufacturer. To achieve this goal CoolMed are partnered with Cool Earth and Earthly charities in order to reduce their carbon footprint and hit a net-zero target by 2030.



- High-quality units suitable for a wide variety of industries that store temperature-critical medicines, vaccines, and samples
- CoolMed have a range of freezers including spark-free and ultra-low temperature options
- CoolMed lab fridges come with a 5 year warranty
- 24-hour highly sensitive temperature controller
- An external control panel displays min/max temperature readings and comes with a battery backup
- Lab range fridges are lockable, to ensure contents remain safe
- Fitted with an alarm that sounds if the temperature rises above or falls below the required range
- Next day kerbside delivery available with no charge to UK mainland, POA to other locations

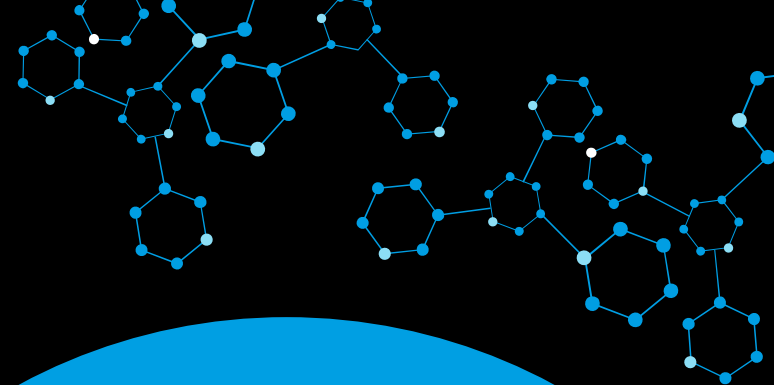


See SLS website for full product listing

Code	Model	Description	Capacity, L	Temp Range, °C	Dims, w x d x h, mm	List Price, £
<b>REF1186</b>	CMS59	Small solid door refrigerator	59	2 to 8	445 x 485 x 725	<b>499.99</b>
<b>REF1244</b>	CMST125	Under-counter staff room fridge/freezer	62	-25 to -18 / 2 to 8	479 x 495 x 845	<b>199.99</b>
<b>FRE1104</b>	CMLFZ115	Spark-free laboratory freezer	115	-24 to -16	598 x 595 x 820	<b>649.99</b>
<b>REF1038</b>	CMLFR145	Spark-free laboratory refrigerator	145	2 to 10	595 x 595 x 820	<b>600.00</b>
<b>REF1196</b>	CMG300	Large glass door refrigerator	300	2 to 8	595 x 650 x 1500	<b>1299.99</b>
<b>REF1198</b>	CMS400	Large solid door refrigerator	400	2 to 8	595 x 695 x 1845	<b>1499.99</b>

# BACK BASICS

2022



Scientific Laboratory Supplies  
Wilford Industrial Estate  
Ruddington Lane  
Nottingham, NG11 7EP  
United Kingdom

t. England & Wales: +44 (0)115 982 1111  
Scotland: +44 (0)123 643 1857  
Northern Ireland: +44 (0)28 9262 1100  
Republic of Ireland: +353 (0)1 4069 464  
International: +44 (0)115 977 5060  
East Africa: +254 (0)728 156294

[www.scientificlabs.co.uk](http://www.scientificlabs.co.uk)



**SCIENTIFIC  
LABORATORY  
SUPPLIES**