

# FOCUS

2021

EXCLUSIVE OFFERS & EXCITING NEW PRODUCTS

See page 49...

**NEW**

## GREAT NEW OFFERS INSIDE:

SLS Select Deep Well  
Storage Plates  
(See page 16)

Anvajo Fluidlab R-300 Cell  
Counter/Spectrometer  
(See page 48)

**Blue-Ray Biotech  
Gradient TurboCycler 2**  
(With 96-Well Sample Block)  
Flexible rate control, adjustable  
lid temperature, easy operation  
with touchscreen



### Eppendorf 5810/5810R Centrifuge Packages

The smallest 3L centrifuge on the market with plenty of smart features



See page 5...

**25%  
OFF**

# WELCOME

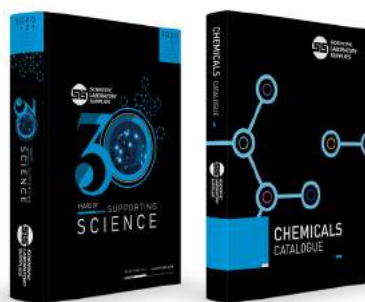
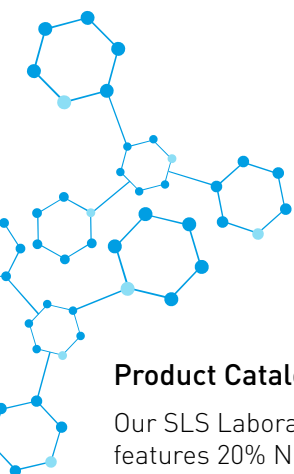
## FOCUS Spring 2021 Edition

Welcome to another bumper issue of FOCUS! With great exclusive offers on products from market leading brands such as Eppendorf, Corning, Gilson, Lonza and Ohaus plus many more. You will also find some great prices on our own SLS branded ranges.

Throughout this edition you will find products suitable for the disinfection and control of COVID-19, helping you to make your working environment safer.

### REMEMBER:

These offers are **EXCLUSIVE** to SLS and valid until 31<sup>st</sup> May 2021



### Product Catalogues - Available now!

Our SLS Laboratory Product Catalogue (2020/21) features 20% NEW products and our Chemicals Catalogue includes products from leading brands including Honeywell Fluka™, Honeywell Riedel-de Haën, Hydranal™, Chromasolv™, Reagecon and our own brand SLS Select chemicals.

Whatever your application you're sure to find the product to suit your needs.

### KEY to product symbols:



Length of warranty



New product



Made in Britain



Sustainability



WORLD LAND TRUST™  
www.carbonbalancedpaper.com  
CBP001952



## KEY Highlights



Eppendorf MiniSpin® and MiniSpin® Plus Microcentrifuges  
**See page 03**



Gilson PIPETMAN® Classic Manual Pipettes  
**See page 08**



Lonza Cell Culture Media and Buffers  
**See page 11**



Axygen® Axyspin Plate Spinner  
**See page 20**



Mettler Toledo SevenCompact™ S210 pH Meter Bundles  
**See page 28**



Liebherr LGv5010 Mediline Freezer  
**See page 43**

## Eppendorf MiniSpin® and MiniSpin® Plus Microcentrifuges



eppendorf

- Extremely compact footprint
- Acceleration and deceleration time <13 s
- User-friendly digital display for time and speed
- Separate short-spin key for fast and comfortable centrifugation
- Soft-touch lid closure for ergonomic lid locking
- Large LCD display
- Includes F-45-12-11 rotor which has a capacity of 12 x 1.5/2.0mL tubes
- MiniSpin® plus provides automatic rpm/rcf conversion, and extended timer to 99 min or continuous centrifugation



| Code           | Description    | Max Speed, RPM | Max Speed, x g | Timer     | List Price £   | Offer Price £ |
|----------------|----------------|----------------|----------------|-----------|----------------|---------------|
| <b>F151377</b> | MiniSpin®      | 800 – 13400    | 12100          | 15s–30min | <b>838.00</b>  | <b>629.00</b> |
| <b>F151378</b> | MiniSpin® Plus | 800 – 14500    | 14100          | 15s–99min | <b>1088.00</b> | <b>816.00</b> |



### Reusable Nanotech Face Masks



Premium and reusable, made from nanotech coated 3-layered 100% cotton. Washable up to 100 times to make them cost effective and environmentally friendly.

| Code           | Size   | List Price £ |
|----------------|--------|--------------|
| <b>COV1016</b> | Large  | <b>4.10</b>  |
| <b>COV1018</b> | Medium | <b>4.10</b>  |

## Eppendorf 5425R Centrifuges



eppendorf

The new Centrifuge 5425R is the successor to the popular Centrifuge 5424R.

- Excellent cooling system for the separation of temperature-sensitive samples from 0.2 – 5 mL
- Aerosol-tight Eppendorf QuickLock® rotor lids for an ergonomic lid locking
- Additional software functions (e.g. short function without keeping the key pressed, end-of-run countdown)
- Extended rotor program (e.g. 5.0mL rotor, swing-bucket rotor for divisible plates to speed up your PCR/qPCR setup)
- OptiBowl® design for quiet operation, even without rotor lid
- Ergonomic closing of the centrifuge lid with only one finger
- Max. rotor capacity: 24 x 2.0mL / 10 x 5.0mL vessels
- Max. speed: 21,300 × g (15,060 rpm)
- FastTemp function: from ~21°C to 4°C in only 8 minutes
- Temperature range: -10°C to +40°C
- The patented compressor technology reduces vibrations and protects your samples
- Continuous cooling maintains a constant temperature after the run has been completed – your samples stay cool



See website for rotor options

| Code               | Description  | List Price £ |
|--------------------|--|--------------|
| <b>E5406000160</b> | Eppendorf 5425R with FA-24x2 Rotor, Keypad Control | 4325.00      |
| <b>E5406000569</b> | Eppendorf 5425R with FA-24x2 Rotor, Knob Control   | 4325.00      |



### Bollé DFS2 Face Screen

DFS2 is a facial screen accessible to all which perfectly protects against splashes and droplets.  
One size fits all.

| Code           | Pack | List Price £ |
|----------------|------|--------------|
| <b>SAF1096</b> | Each | 3.00         |

## Eppendorf 5810/5810R Centrifuge Packages



eppendorf

- Smallest 3L centrifuge on the market
- Low lid opening height for use under shelves
- Quiet to benefit your work environment
- High centrifugation speed of up to 4,500 × g (swing-bucket rotor) or 20,913 × g (fixed-angle)
- Timer 1min to 99min, with continuous run function, short-spin
- Low access height for easy loading/unloading
- Centrifuge lid with soft-touch lid closure
- Temperature range from -9°C to 40°C for R models
- Available with adapters for 13mm and 16mm round-bottom blood/urine collection tubes or standard 15mL and 50mL Falcon® tubes
- Featuring swing-bucket rotors for high capacity (S-4-104) 56x15mL, 28x50mL or 92x13mL, 80x16mL; medium capacity (A-4-62) 36x15mL, 16x50mL; or economical capacity (A-4-81) 48x15mL, 20x50mL



25%  
OFF

| Code           | Model | Supplied with  | List Price £ | Offer Price £ |
|----------------|-------|--|--------------|---------------|
| <b>F151379</b> | 5810R | S-4-104 Rotor, Adapters for 15mL/50mL Conical Tubes      | 9152.00      | 6864.00       |
| <b>F151380</b> | 5810R | S-4-104 Rotor, Adapters for 13mL/16mL Round-Bottom Tubes | 9152.00      | 6864.00       |
| <b>F151381</b> | 5810R | A-4-81 Rotor, Adapters for 15mL/50mL Conical Tubes       | 8717.00      | 6538.00       |
| <b>F151382</b> | 5810R | A-4-62 Rotor, Adapters for 15mL/50mL Conical Tubes       | 8031.00      | 6023.00       |
| <b>F151383</b> | 5810  | A-4-62 Rotor, Adapters for 15mL/50mL Conical Tubes       | 5514.00      | 4136.00       |
| <b>F151384</b> | 5810  | A-4-81 Rotor, Adapters for 15mL/50mL Conical Tubes       | 6200.00      | 4650.00       |
| <b>F151385</b> | 5810  | S-4-104 Rotor, Adapters for 13mL/16mL Round-Bottom Tubes | 6639.00      | 4979.00       |
| <b>F151386</b> | 5810  | S-4-104 Rotor, Adapters for 15mL/50mL Conical Tubes      | 6639.00      | 4979.00       |



## Eppendorf Combitips Advanced

eppendorf

Offering a unique volume range of 1µL-10mL and is the only mechanical dispenser that dispenses the aspirated liquid up to 100 times without refilling the tip.

- Repetitive dispensing of volumes in long series
- Contamination-free dispensing of hazardous liquids
- Precise and accurate dispensing of viscous solutions e.g glycerol, or liquids with high vapour pressure e.g ethanol
- Purchase 7 packs of Combitips Advanced from the list below at your normal price to receive a FREE Multipette M4 (Multipette and Combitips shipped separately)



Combitips are supplied in packs of 100

### Combitips Advanced - Eppendorf Quality

High precision and accuracy guaranteed by precise moulding and testing.

| Code           | Colour     | Volume, mL | List Price £ |
|----------------|------------|------------|--------------|
| <b>F151387</b> | White      | 0.1        | 82.00        |
| <b>F151388</b> | Light blue | 0.2        | 82.00        |
| <b>F151389</b> | Purple     | 0.5        | 82.00        |
| <b>F151390</b> | Yellow     | 1.0        | 82.00        |
| <b>F151391</b> | Green      | 2.5        | 82.00        |
| <b>F151392</b> | Blue       | 5.0        | 82.00        |
| <b>F151393</b> | Orange     | 10.0       | 82.00        |
| <b>F151394</b> | Red        | 25.0       | 97.00        |
| <b>F151395</b> | Light grey | 50.0       | 106.00       |

### Combitips Advanced - PCR Clean

Certified free of DNases, RNases, nucleic acids and PCR inhibitors

| Code           | Colour     | Volume, mL | List Price £ |
|----------------|------------|------------|--------------|
| <b>F151396</b> | White      | 0.1        | 103.00       |
| <b>F151397</b> | Light blue | 0.2        | 103.00       |
| <b>F151398</b> | Purple     | 0.5        | 103.00       |
| <b>F151399</b> | Yellow     | 1.0        | 103.00       |
| <b>F151400</b> | Green      | 2.5        | 103.00       |
| <b>F151401</b> | Blue       | 5.0        | 103.00       |
| <b>F151402</b> | Orange     | 10.0       | 103.00       |
| <b>F151403</b> | Red        | 25.0       | 119.00       |
| <b>F151404</b> | Light grey | 50.0       | 132.00       |

### Combitips Advanced - Biopur

Guaranteed to be sterile and free of pyrogens, RNases, DNases, DNA and ATP as well as PCR inhibitors. Individually Wrapped.

| Code           | Colour     | Volume, mL | List Price £ |
|----------------|------------|------------|--------------|
| <b>F151405</b> | White      | 0.1        | 150.00       |
| <b>F151406</b> | Light blue | 0.2        | 150.00       |
| <b>F151407</b> | Purple     | 0.5        | 150.00       |
| <b>F151408</b> | Yellow     | 1.0        | 150.00       |
| <b>F151409</b> | Green      | 2.5        | 150.00       |
| <b>F151410</b> | Blue       | 5.0        | 150.00       |
| <b>F151411</b> | Orange     | 10.0       | 150.00       |
| <b>F151412</b> | Red        | 25.0       | 176.00       |
| <b>F151413</b> | Light grey | 50.0       | 190.00       |





# Raise the Limits

## Eppendorf Research® plus

Eppendorf sets standards in ergonomics! This ultralight pipette meets the highest needs in precision and accuracy – combined with ultimate ergonomics and increased flexibility.

A spring-loaded tip cone, a secondary adjustment option, an improved volume display – and all that in an ultra light, fully autoclavable pipette.

- > Ideal ergonomics:  
Eppendorf PhysioCare Concept®
- > Ultra light with minimal pipetting and ejection forces
- > Spring-loaded tip cone
- > Available as single-channel pipette with fixed and variable volume as well as 8-, 12-, 16- and 24-channel pipette



[www.scientificlabs.co.uk](http://www.scientificlabs.co.uk)

## Gilson PIPETMAN® Classic Manual Pipettes



### PIPETMAN® Classic starter kit includes:

3 PIPETMAN® Classic pipettes: P20, P200, P1000; 2 racks DIAMOND tips: D200, D1000; 3 SINGLE™ pipette hangers; 'Gilson Guide to Pipetting' handbook

### PIPETMAN® Classic microvolume kit includes:

3 PIPETMAN® Classic pipettes: P2, P10, P100; 2 racks DIAMOND tips: DL10, D200; 3 SINGLE™ pipette hangers; 'Gilson Guide to Pipetting' handbook

### PIPETMAN® Classic large volume kit includes:

2 PIPETMAN® Classic pipettes: P5000, P10mL; 2 bags of ten filters; 2 safety bags

### PIPETMAN® Classic four pipette kit includes:

4 PIPETMAN® Classic pipettes: P2, P20, P200, P1000; 2 racks DIAMOND tips: D10L, D200, D1000; 4 SINGLE™ pipette holders; 4 PIPETMAN® comfort handles; 'Gilson Guide to Pipetting' handbook



| Code           | Description           | Volume Range, µL | List Price £ | Offer Price £ |
|----------------|-----------------------|------------------|--------------|---------------|
| <b>F151074</b> | P2                    | 0.2-2            | 209.00       | <b>125.00</b> |
| <b>F151075</b> | P10                   | 1-10             | 209.00       | <b>125.00</b> |
| <b>F151076</b> | P20                   | 2-20             | 209.00       | <b>125.00</b> |
| <b>F151077</b> | P100                  | 20-100           | 209.00       | <b>125.00</b> |
| <b>F151078</b> | P200                  | 5-200            | 209.00       | <b>125.00</b> |
| <b>F151079</b> | P1000                 | 200-1000         | 209.00       | <b>125.00</b> |
| <b>F151080</b> | P5000                 | 1000-5000        | 209.00       | <b>125.00</b> |
| <b>F151081</b> | P10mL                 | 1000-10000       | 209.00       | <b>125.00</b> |
| <b>F151082</b> | Starter Kit           | -                | 567.00       | <b>340.00</b> |
| <b>F151083</b> | Large Volume Kit      | -                | 378.00       | <b>227.00</b> |
| <b>F151084</b> | Micro Volume Kit      | -                | 567.00       | <b>340.00</b> |
| <b>F151085</b> | Classic 4 Pipette Kit | -                | 735.00       | <b>441.00</b> |

## SLS Lab Basics Pipettes



### Single Channel:

- Ergonomic design ensuring light weight & soft plunger movement
- Click-stop system for volume selection
- Colour coded for easy identification
- Calibration conforms to EN-ISO 8655 with report enclosed with every pipette



### Multi Channel:

- Manifold is easily removable, fully autoclavable and can rotate 360° for easy right or left hand operation
- Smooth and light tip loading and ejection
- Leak free sealing of tips



| Code           | Channel | Volume Range, µL | List Price £ | Offer Price £ |
|----------------|---------|------------------|--------------|---------------|
| <b>F151300</b> | Single  | 0.1-2.5          | 115.00       | <b>48.00</b>  |
| <b>F151301</b> | Single  | 0.5-10           | 115.00       | <b>48.00</b>  |
| <b>F151305</b> | Single  | 2-20             | 115.00       | <b>48.00</b>  |
| <b>F151302</b> | Single  | 5-50             | 115.00       | <b>48.00</b>  |
| <b>F151303</b> | Single  | 10-100           | 115.00       | <b>48.00</b>  |
| <b>F151306</b> | Single  | 20-200           | 115.00       | <b>48.00</b>  |
| <b>F151304</b> | Single  | 100-1000         | 115.00       | <b>48.00</b>  |
| <b>F151307</b> | Single  | 500-5000         | 138.00       | <b>52.00</b>  |
| <b>F151308</b> | Single  | 1000-10000       | 138.00       | <b>52.00</b>  |
| <b>F151313</b> | 8       | 0.5-10           | 520.00       | <b>165.00</b> |
| <b>F151309</b> | 8       | 5-50             | 520.00       | <b>165.00</b> |
| <b>F151310</b> | 8       | 10-100           | 520.00       | <b>165.00</b> |
| <b>F151311</b> | 8       | 20-200           | 520.00       | <b>165.00</b> |
| <b>F151312</b> | 8       | 30-300           | 520.00       | <b>165.00</b> |
| <b>F151318</b> | 12      | 0.5-10           | 570.00       | <b>200.00</b> |
| <b>F151314</b> | 12      | 5-50             | 570.00       | <b>200.00</b> |
| <b>F151315</b> | 12      | 10-100           | 570.00       | <b>200.00</b> |
| <b>F151316</b> | 12      | 20-200           | 570.00       | <b>200.00</b> |
| <b>F151317</b> | 12      | 30-300           | 570.00       | <b>200.00</b> |



## Axygen® Axypet® Pro Starter Kit



Axygen® Axypet® Pro Pipettors have been engineered to provide the highest levels of ergonomics, accuracy, and precision.

Starter Kit contains 4 variable volume pipettors in the most popular and universal volumes (0.5-10µL, 2-20µL, 20-200µL, and 100-1000µL), red pipette stand for 4 pipettors, and 3 racks with tips (10µL, 200µL and 1000µL).

- Ergonomic handle design for perfect fit for both right and left hand
- Convenient one-hand volume setting with auto-lock system prevents accidental volume change during work
- 4-digit counter for greater precision, perfectly positioned for visibility at all times
- Single-channel pipettors are compatible with very narrow tubes
- Fully autoclavable and UV-resistant for sample protection against contaminations



| Code    | Description            | List Price £ | Offer Price £ |
|---------|------------------------|--------------|---------------|
| F151063 | Axypet Pro Starter Kit | 742.04       | 370.00        |



### Dentigel Alcohol Gel Pump 500mL

| Code    | List Price £ |
|---------|--------------|
| COV1210 | 4.90         |

## SLS Lab Pro Pipettes



The SLS Lab Pro pipettes offer superior quality at an affordable price. These are lightweight pipettes with a handle that fits naturally in the hand. They feature a volume locking system for safe, secure pipetting. A lubricated piston assembly offers very light pipetting forces.

- Adjustable tip ejector button to adapt to both right and left-handed users
- Clip mechanism allows easy and safe removal of tip ejector



| Code           | Channel | Volume Range, µL | List Price £ | Offer Price £ |
|----------------|---------|------------------|--------------|---------------|
| <b>F151284</b> | Single  | 0.2-2            | 210.00       | <b>105.00</b> |
| <b>F151285</b> | Single  | 1-10             | 210.00       | <b>105.00</b> |
| <b>F151286</b> | Single  | 2-20             | 210.00       | <b>105.00</b> |
| <b>F151287</b> | Single  | 10-100           | 210.00       | <b>105.00</b> |
| <b>F151288</b> | Single  | 20-200           | 210.00       | <b>105.00</b> |
| <b>F151289</b> | Single  | 100-1000         | 210.00       | <b>105.00</b> |
| <b>F151290</b> | Single  | 500-5000         | 240.00       | <b>120.00</b> |
| <b>F151291</b> | Single  | 1000-10000       | 240.00       | <b>120.00</b> |
| <b>F151292</b> | 8       | 0.5-10           | 495.00       | <b>235.00</b> |
| <b>F151293</b> | 8       | 2-20             | 495.00       | <b>235.00</b> |
| <b>F151294</b> | 8       | 20-200           | 495.00       | <b>235.00</b> |
| <b>F151295</b> | 8       | 20-300           | 495.00       | <b>235.00</b> |
| <b>F151296</b> | 12      | 0.5-10           | 565.00       | <b>285.00</b> |
| <b>F151297</b> | 12      | 2-20             | 565.00       | <b>285.00</b> |
| <b>F151298</b> | 12      | 20-200           | 565.00       | <b>285.00</b> |
| <b>F151299</b> | 12      | 20-300           | 565.00       | <b>285.00</b> |

## SLS Lab Pro Pipette Tip Reload Towers



A low cost, environmentally friendly alternative to racked tips. The system allows the user to reload empty racks with new tips in a single movement. The transfer card is designed to prevent contamination by minimising the amount of handling.

- Reload up to 10 trays in 90 seconds
- Requires 57% less storage space than full racks
- Reuse existing racks
- Generates 90% less packaging waste



| Code           | Volume, µL | Pack    | List Price £ | Offer Price £ |
|----------------|------------|---------|--------------|---------------|
| <b>F151319</b> | 10XL       | 10 x 96 | 31.90        | 16.80         |
| <b>F151320</b> | 10         | 10 x 96 | 33.40        | 16.80         |
| <b>F151321</b> | 200        | 10 x 96 | 32.80        | 16.80         |
| <b>F151322</b> | 300        | 10 x 96 | 35.70        | 16.80         |
| <b>F151323</b> | 1000       | 10 x 96 | 35.60        | 22.80         |
| <b>F151324</b> | 1250       | 10 x 96 | 38.70        | 22.80         |

## Lonza Cell Culture Media and Buffers

A high quality range of media, buffer solutions and supplements for a wide variety of cell culture applications. Suitable for high density suspensions, monolayers and adherent dependent cells including human, monkey, hamster, rat, mouse, chicken and fish lines as well as hybridoma cells and blood cells.



**Lonza**



| Code           | Description   | Pack  | List Price £ | Offer Price £ |
|----------------|---|-------|--------------|---------------|
| <b>F151269</b> | DMEM 4.5g/L Glucose with L-Glutamine  | 500mL | 7.00         | 3.28          |
| <b>F151270</b> | DMEM 4.5g/L Glucose without L-Glutamine   | 500mL | 7.10         | 3.06          |
| <b>F151271</b> | DMEM Low Glucose with 1g/L Glucose without L-Glutamine                          | 500mL | 11.60        | 3.06          |
| <b>F151272</b> | DMEM:F12 with 25mM HEPES 1:1 Mixture with 3.151g/L Glucose with L-Glutamine     | 500mL | 9.30         | 3.57          |
| <b>F151273</b> | RPMI 1640 Medium without L-Glutamine  | 500mL | 7.60         | 3.06          |
| <b>F151274</b> | RPMI 1640 Medium with L-Glutamine   | 500mL | 7.30         | 3.13          |
| <b>F151275</b> | Ham's F12 Medium with L-Glutamine   | 500mL | 12.40        | 6.60          |
| <b>F151276</b> | Hanks' BSS (1X) without Phenol Red, Calcium or Magnesium                        | 500mL | 11.30        | 5.78          |
| <b>F151277</b> | DPBS (1X) with Calcium and Magnesium  | 500mL | 9.90         | 4.42          |
| <b>F151278</b> | PBS (1X) without Calcium and Magnesium  | 500mL | 6.90         | 3.06          |
| <b>F151279</b> | Trypsin-EDTA (1X) includes 170,000 U/L Trypsin 1:250 and 0.2g/L Versene® (EDTA) | 100mL | 14.10        | 5.51          |
| <b>F151280</b> | Trypsin-EDTA (10X) includes 1,700,000 UL Trypsin 1:250 and 2g/L Versene® (EDTA) | 100mL | 19.50        | 5.79          |
| <b>F151281</b> | 10,000 U/mL Potassium Penicillin and 10,000µg /mL Streptomycin Sulfate          | 100mL | 11.40        | 7.94          |
| <b>F151282</b> | 5,000 U/mL Potassium Penicillin and 5,000µg/mL Streptomycin Sulfate             | 100mL | 12.10        | 7.07          |



| Code           | Description                                       | Pack  | List Price £ | Offer Price £ |
|----------------|---|-------|--------------|---------------|
| <b>F151668</b> | Buffer Solution pH 4 Colour Coded (Red)           | 1L    | 27.00        | 18.90         |
| <b>F151669</b> | Buffer Solution pH 4 Colour Coded (Red)           | 2.5L  | 48.00        | 33.60         |
| <b>F151670</b> | Buffer Solution pH 4 Colour Coded (Red)           | 5L    | 40.00        | 28.00         |
| <b>F151671</b> | Buffer Solution pH 7 Colour Coded (Yellow)        | 1L    | 27.00        | 18.90         |
| <b>F151672</b> | Buffer Solution pH 7 Colour Coded (Yellow)        | 2.5L  | 31.00        | 21.70         |
| <b>F151673</b> | Buffer Solution pH 7 Colour Coded (Yellow)        | 5L    | 46.00        | 32.20         |
| <b>F151674</b> | Buffer Solution pH 10 Colour Coded (Blue)         | 1L    | 27.00        | 18.90         |
| <b>F151675</b> | Buffer Solution pH 10 Colour Coded (Blue)         | 2.5L  | 48.00        | 33.60         |
| <b>F151676</b> | Buffer Solution pH 10 Colour Coded (Blue)         | 5L    | 49.00        | 34.30         |
| <b>F151677</b> | pH Electrode Storage Solution                     | 500mL | 31.00        | 21.70         |
| <b>F151678</b> | Potassium Chloride 4M (pH Electrode Filling Soln) | 100mL | 27.00        | 18.90         |

## Conductivity Standards

| Code           | Description                             | Pack  | List Price £ | Offer Price £ |
|----------------|---|-------|--------------|---------------|
| <b>F151679</b> | Conductivity Standard 10µS (at 25°C)    | 500mL | 21.00        | 14.70         |
| <b>F151680</b> | Conductivity Standard 84µS (at 25°C)    | 500mL | 21.00        | 14.70         |
| <b>F151681</b> | Conductivity Standard 147µS (at 25°C)   | 500mL | 21.00        | 14.70         |
| <b>F151682</b> | Conductivity Standard 1000µS (at 25°C)  | 500mL | 21.00        | 14.70         |
| <b>F151683</b> | Conductivity Standard 1413µS (at 25°C)  | 500mL | 21.00        | 14.70         |
| <b>F151684</b> | Conductivity Standard 2000µS (at 25°C)  | 500mL | 21.00        | 14.70         |
| <b>F151685</b> | Conductivity Standard 12880µS (at 25°C) | 500mL | 21.00        | 14.70         |

## Laboratory Water

| Code           | Description                     | Pack | List Price £ | Offer Price £ |
|----------------|---------------------------------|------|--------------|---------------|
| <b>F151686</b> | Water Analytical Reagent (A.R.) | 5L   | 24.00        | 16.80         |
| <b>F151687</b> | Water Analytical Reagent (A.R.) | 10L  | 35.00        | 24.50         |
| <b>F151688</b> | Water Analytical Reagent (A.R.) | 25L  | 39.00        | 27.30         |
| <b>F151689</b> | Water Deionized                 | 2.5L | 10.00        | 7.00          |
| <b>F151690</b> | Water Deionized                 | 5L   | 15.00        | 10.50         |
| <b>F151691</b> | Water Deionized                 | 25L  | 35.00        | 24.50         |



SLS is now the official Distributor Partner for the entire Sigma-Aldrich® range from Merck, with access to over 300,000 Sigma-Aldrich and Supelco products. With a wide portfolio and next day shipping on the majority of products our comprehensive range provides a solution to most applications

SLS provides the full portfolio of Honeywell brands including Burdick & Jackson™, Riedel-Haën™ and Fluka™. This includes a broad range of solvents and essential reagents for analytical and chemistry laboratories including Hydranal™, Chromasolv™ and many other high-quality premium chemical products.

SLS Select is our own range of chemicals, manufactured in the UK and designed to meet the needs of the most demanding of laboratories. We provide a high quality, cost effective solution to most routine applications.

One of the largest producers of Physical/Chemical Standards and Certified Reference Materials worldwide. Certified to ISO9001, ISO17025, ISO17034, ISO18001 with the majority of products also traceable to International bodies such as NIST & OIML.

Manufacturer of Certified Reference Materials (CRMs) and Calibration Standards offering a full range of Inorganic and Organic CRMs. Certified to ISO 9001:2015, ISO/IEC 17025:2017 and ISO 17034:2016.

## SLS Select Biocleanse Disinfectant

NEW



Low-residue, alcohol-free SLS Select Biocleanse disinfectant offers a convenient, effective, powerful all-in-one cleaning and disinfecting solution for a broad range of surfaces, including PMMA and aluminium.

- Wide spectrum microbiocide
- Cleans and disinfects in a single wipe
- pH neutral
- Alcohol-free
- Effective against all enveloped viruses e.g. HIV, HBV, HCV, coronaviruses
- Wipe size: 200 x 190mm
- 200 wipes per tub

40% OFF



| Code    | Description           | Pack | List Price £ | Offer Price £ |
|---------|-----------------------|------|--------------|---------------|
| F151360 | Disinfectant Wipe Tub | 6    | 75.00        | 45.00         |

**AZLON®**

## WASH BOTTLES

FOR SAFE AND EASY SOLVENT AND LIQUID DISPENSING



Find out more at  
[scientificlabs.co.uk](http://scientificlabs.co.uk)



**DWK LIFE SCIENCES**  
DURAN WHEATON KIMBLE





## Azlon® Multi-Lingual Safety Vented Wash Bottles

Supplied in packs of 5

| Code           | Label       | Cap Colour | Volume, mL | List Price £ | Offer Price £ |
|----------------|-------------|------------|------------|--------------|---------------|
| <b>F151170</b> | Acetone     | Red        | 500        | 26.97        | 17.53         |
| <b>F151171</b> | Methanol    | Green      | 500        | 26.97        | 17.53         |
| <b>F151172</b> | Isopropanol | Blue       | 500        | 26.97        | 17.53         |
| <b>F151173</b> | I.M.S       | Yellow     | 500        | 26.97        | 17.53         |
| <b>F151174</b> | Ethanol     | Orange     | 500        | 26.97        | 17.53         |

**35%  
OFF**

## DURAN® Protect Glass Laboratory Bottles

- The plastic coating provides scratch, leak and splinter protection
- Standard GL45-thread
- Easy-to-read scale with graduation marks to estimate the content
- Fired-on, highly durable white ceramic print
- PBT caps and ETFE pouring rings are fully autoclavable at 121 or 134°C and offer greater thermal and chemical resistance than the equivalent polypropylene components

**Note: Caps and pouring rings not included with bottles and must be purchased separately. Bottles, caps and pouring rings supplied in packs of 10.**

**35%  
OFF**



| Code           | Description   | List Price £ | Offer Price £ |
|----------------|---|--------------|---------------|
| <b>F151163</b> | DURAN® Protect Laboratory Bottles 100mL                 | 123.60       | 80.00         |
| <b>F151164</b> | DURAN® Protect Laboratory Bottles 250mL                 | 135.70       | 88.00         |
| <b>F151165</b> | DURAN® Protect Laboratory Bottles 500mL                 | 164.00       | 107.00        |
| <b>F151166</b> | DURAN® Protect Laboratory Bottles 1000mL                | 230.80       | 150.00        |
| <b>F151167</b> | DURAN® Protect Laboratory Bottles 2000mL                | 455.00       | 296.00        |
| <b>F151168</b> | DURAN® Red PBT 54mm Screw-Caps with PTFE Protected Seal | 54.60        | 35.50         |
| <b>F151169</b> | DURAN® Red ETFE Pouring Rings                           | 11.70        | 7.61          |

## SLS Select Media Bottles

A



- Perfect for everyday laboratory use
- Suitable for many applications, such as storage of culture media
- Made from high quality borosilicate glass 3.3 to ISO 3585
- Heat and chemical resistance
- GL45 blue polypropylene cap and pouring ring included
- White graduations and marking spot
- Sloped shoulders for easy pour
- Standards to ISO 4796-1

50%  
OFF



| Code    | Volume, L | Pack | List Price £ | Offer Price £ |
|---------|-----------|------|--------------|---------------|
| F151342 | 0.1       | 10   | 28.80        | 14.40         |
| F151343 | 0.25      | 10   | 32.80        | 16.40         |
| F151344 | 0.5       | 10   | 33.70        | 16.90         |
| F151345 | 1         | 10   | 55.00        | 27.50         |
| F151346 | 2         | 10   | 119.00       | 60.00         |
| F151347 | 5         | Each | 113.00       | 57.00         |
| F151348 | 10        | Each | 183.00       | 92.00         |
| F151349 | 20        | Each | 286.00       | 143.00        |

Corning®



Sterile Water

## Corning® Sterile Molecular Biology Grade Water

Suitable for a wide variety of routine tasks requiring a high degree of sterility.

Supplied in packs of 6.

| Code    | Volume, mL | List Price £ | Offer Price £ |
|---------|------------|--------------|---------------|
| F151055 | 100        | 55.65        | 24.00         |
| F151056 | 500        | 98.00        | 40.00         |
| F151057 | 1000       | 140.03       | 54.00         |

UP TO  
60%  
OFF

## SLS Select Deep Well Storage Plates



SLS Select deep well storage plates are high performance plates produced in cleanrooms that are certified for medical device assembly. They are manufactured in pure virgin medical grade polypropylene (PP) with class leading low levels of extractable elements.

- ANSI-SBS Footprint
- Tested for low extractables
- Alpha-Numeric reference grid
- Suitable for automated or manual applications
- For use in sample storage at 86°C to DNA denaturation at 100°C
- Autoclavable
- No inner edges to allow better collection of magnetic beads
- Manufactured under DNase/RNase free environment
- Coloured versions available

**50%  
OFF**



### Round Well

| Code           | No. of Wells | Well Volume, mL | Bottom | Colour  | Pack | List Price £ | Offer Price £ |
|----------------|--------------|-----------------|--------|---------|------|--------------|---------------|
| <b>SLS1206</b> | 96           | 1               | U      | Natural | 50   | 199.85       | 100.00        |
| <b>SLS1208</b> | 96           | 1               | U      | Black   | 50   | 185.00       | 93.00         |
| <b>SLS1230</b> | 96           | 1               | U      | Black   | 50   | 199.85       | 100.00        |
| <b>SLS1240</b> | 96           | 1.2             | U      | Natural | 50   | 207.35       | 104.00        |
| <b>SLS1242</b> | 96           | 1.2             | U      | Natural | 50   | 207.35       | 104.00        |

### Square Well

| Code           | No. of Wells | Well Volume, mL | Bottom | Colour  | Pack | List Price £ | Offer Price £ |
|----------------|--------------|-----------------|--------|---------|------|--------------|---------------|
| <b>SLS1246</b> | 96           | 2               | V      | Natural | 50   | 169.95       | 85.00         |
| <b>SLS1248</b> | 96           | 2               | V      | Black   | 50   | 186.65       | 93.00         |
| <b>SLS1278</b> | 96           | 2.2             | V      | Natural | 50   | 169.95       | 85.00         |
| <b>SLS1280</b> | 96           | 2.2             | U      | Natural | 50   | 276.60       | 138.00        |
| <b>SLS1282</b> | 384          | 0.3             | V      | Natural | 48   | 707.75       | 354.00        |

### Sealing Mats

| Code           | Description   | Pack | List Price £ | Offer Price £ |
|----------------|---|------|--------------|---------------|
| <b>SLS1284</b> | 96 square well silicone sealing mat                                   | 50   | 396.60       | 198.00        |
| <b>SLS1286</b> | 96 square well silicone sealing mat, can be punctured                 | 50   | 396.60       | 198.00        |
| <b>SLS1288</b> | 96 round well silicone sealing mat for 1.0mL plates, can be punctured | 50   | 396.60       | 198.00        |
| <b>SLS1290</b> | 96 round well silicone sealing mat for 2.0mL plates, can be punctured | 50   | 396.60       | 198.00        |
| <b>SLS1294</b> | 96 square well silicone sealing mat, cross cut                        | 50   | 396.60       | 198.00        |
| <b>SLS1296</b> | 96 round well silicone sealing mat for 2.0mL plates, cross cut        | 50   | 396.60       | 198.00        |
| <b>SLS1298</b> | 384 square well silicone sealing mat                                  | 50   | 396.60       | 198.00        |

## SLS Select Serological Pipettes



- Manufactured in compliance with the current versions of the ISO 13485 and FDA CFR 21 Part 820, cGMP
- Made from USP Class VI polystyrene resin
- Crisp, dark ascending and descending as well as negative graduations
- Colour-coded rings for easy identification
- Plugged
- Non-pyrogenic
- RNase-/DNase-free
- Sterile



Up to  
**58%  
OFF**

| Code           | Volume, mL | Packaging            | Inner Pack | Pack | List Price £ | Offer Price £ |
|----------------|------------|----------------------|------------|------|--------------|---------------|
| <b>F151325</b> | 1          | Individually Wrapped | 100        | 1000 | 143.00       | 60.00         |
| <b>F151326</b> | 1          | Bulk                 | 25         | 1000 | 118.00       | 50.00         |
| <b>F151327</b> | 2          | Individually Wrapped | 100        | 1000 | 157.00       | 66.00         |
| <b>F151328</b> | 2          | Bulk                 | 25         | 1000 | 118.00       | 50.00         |
| <b>F151329</b> | 5          | Bulk                 | 25         | 500  | 112.00       | 46.80         |
| <b>F151330</b> | 5          | Individually Wrapped | 50         | 200  | 43.00        | 18.20         |
| <b>F151331</b> | 10         | Individually Wrapped | 50         | 200  | 45.00        | 19.00         |
| <b>F151332</b> | 10         | Bulk                 | 25         | 500  | 137.00       | 57.50         |
| <b>F151333</b> | 25         | Bulk                 | 20         | 100  | 146.00       | 68.00         |
| <b>F151334</b> | 25         | Individually Wrapped | 50         | 200  | 103.00       | 43.40         |
| <b>F151335</b> | 50         | Individually Wrapped | 20         | 100  | 126.00       | 53.00         |



### SLS Select Cylinders, Polypropylene with Moulded Graduations

Supplied in packs of 10

| Code            | Capacity, mL | List Price £ |
|-----------------|--------------|--------------|
| <b>CYL20840</b> | 50           | 12.00        |
| <b>CYL20880</b> | 250          | 27.00        |
| <b>CYL20920</b> | 1000         | 70.00        |

## SLS Lab Basics Pipette Filler



- Long life Li-Ion battery that allows 20 hours of continuous usage, and low battery indicator
- For 1-100mL glass or plastic pipettes
- Uses standard 0.45µm hydrophobic filters
- Complete with universal voltage and plug faced charger
- Supplied with bench stand, magnetic/fixable wall mount and 5 coloured nose cones

**50%  
OFF**



| Code           | Description    | List Price £ | Offer Price £ |
|----------------|----------------|--------------|---------------|
| <b>F151350</b> | Pipette Filler | 200.00       | 100.00        |



### Corning® Stripettor™ Ultra Pipette Controller

**48%  
OFF**

| Code           | Description                             | List Price £ | Offer Price £ |
|----------------|---|--------------|---------------|
| <b>F151058</b> | Stripettor™ Ultra<br>Pipette Controller | 268.53       | 140.00        |

## Biocleanse Ultra Ready-To-Use Wide Spectrum Microbiocide Spray

Biocleanse Ultra Ready-to-Use Spray is a low residue, alcohol-free, solution for effective one-stage cleaning and disinfection of a broad range of surfaces including PMMA and aluminium.

**Whilst  
Stocks  
Last**

| Code           | Pack       | List Price £ |
|----------------|------------|--------------|
| <b>COV1104</b> | 20 x 500mL | 106.00       |





## Thermo Scientific™ Digital Mini Rotators

2  
YEARS

**Thermo**  
SCIENTIFIC

- Speed range: 50–500 rpm
- Precise speed control:
  - $\pm 1$  rpm ( $\leq 100$  rpm)
  - $\pm 1\%$  (101–450 rpm)
- Orbit Diameter: 10mm
- Max Load up to 4.5kg
- 2 Timer modes:  
Continuous, Timer



**15%  
OFF**

| Code           | Description          | Platform Dims, mm | Overall Dims, w x d x h, mm | List Price £ | Offer Price £ |
|----------------|----------------------|-------------------|-----------------------------|--------------|---------------|
| <b>F151054</b> | Digital Mini Rotator | 310 x 284         | 284 x 383 x 130             | 1087.00      | 924.00        |

## Thermo Scientific™ Digital Waving Rotator

2  
YEARS

**Thermo**  
SCIENTIFIC

- Digital display of speed and time
- Speed range: 5 – 120rpm
- Easy adjustable rocking angle: 1–12°
- Precise speed control:
  - $\pm 1$  rpm  $\leq 30$  rpm
  - $\pm 2$  rpm  $> 30$  rpm
- Max load up to 9.8kg
- Tray size fits 6 x well-plates
- Timer range:  
1min to 99hrs 59min



**15%  
OFF**

| Code           | Description            | Platform Dims, mm | Overall Dims, w x d x h, mm | List Price £ | Offer Price £ |
|----------------|------------------------|-------------------|-----------------------------|--------------|---------------|
| <b>F151374</b> | Digital Waving Rotator | 276 x 316 x 19    | 295 x 383 x 224             | 1076.00      | 915.00        |

## Axygen® Axyspin Plate Spinner



The first centrifuge designed specifically for quick and easy centrifugation of samples in PCR plates or microplates. Two standard microplates are loaded through a slot in the top of the unit, and sealed plates are loaded vertically. Surface tension keeps samples in place so there is no danger of spilling. Upon closing the lid of the unit, the rotor quickly accelerates the microplates to 2500 rpm. Opening the lid engages the brake and brings the rotor to a stop.

- Capacity for two standard plates
- Top loading design
- Exceptionally small footprint, less than  $\frac{1}{4}$  the size of most plate centrifuges
- Starts and stops in seconds
- Use before and after thermal cycling to improve PCR yield
- Quickly spin down droplets and condensation
- Accepts skirted and non-skirted and all standard PCR plates
- Speed: 2500 rpm/rcf 500 × g



| Code    | Description           | Dims, w x d x h, mm | List Price £ | Offer Price £ |
|---------|-----------------------|---------------------|--------------|---------------|
| F151060 | Axyspin Plate Spinner | 190 x 210 x 183     | 561.97       | 330.00        |

## Corning® LSE™ Platform Rockers



- Low profile and compact size
- 5kg load capacity
- Non-slip rubber pads to prevent sample containers from moving during operation
- Double platform model available for increased capacity
- Timer: 0 to 2 hours or continuous
- Speed: 5 to 120 tilts/minute
- Platform size: 300 x 300mm
- Dims: 325 x 360 x 145mm



Over  
**40%  
OFF**

| Code           | Description     | List Price £ | Offer Price £ |
|----------------|-----------------|--------------|---------------|
| <b>F151066</b> | Single Platform | 691.70       | <b>385.00</b> |
| <b>F151067</b> | Double Platform | 758.38       | <b>425.00</b> |

## Corning® LSE™ Benchtop Incubated Shaker with Platform



Truly a benchtop style, the lid has a low pivot point which provides a space-saving size sure to fit on the lab bench and under shelves. Each unit includes a software package, which provides the option of saving data to an external computer or monitoring RPM and temperature throughout runs. The maximum capacity is 16 x 125mL/ 9 x 250mL/ 5 x 500mL/ 4 x 1000mL.

- Outstanding temperature uniformity
- Large viewing area for undisturbed monitoring of samples
- Broad temperature range
- Multiple shelving options
- Precision control shaking mechanism
- PT100 sensor
- 1min to 99hr timer



**29%  
OFF**

| Code           | Speed Range, RPM | Orbit, mm | Temp Range, °C       | Dims, w x d x h, mm | Weight, kg | List Price £ | Offer Price £  |
|----------------|------------------|-----------|----------------------|---------------------|------------|--------------|----------------|
| <b>F151062</b> | 20-300           | 19        | Ambient +5°C to 80°C | 370 x 530 x 400     | 20.2       | 2823.99      | <b>1995.00</b> |

## SLS Flowgen Incu-Shaker™ Incubated Shaker



A compact shaking incubator with a remarkably small footprint. Accepts several platforms and a variety of flasks, tubes and other common vessels. The standard platform (included) features a non-slip, rubber coated surface, ideal for tissue culture flasks, Petri dishes and staining trays. The convenient MAGIC Clamp™ platform is also available for use with Erlenmeyer flasks and test tube racks. The unique, magnetic attachment method is the easiest way to instantly change between flask clamps of different sizes.

- Extremely compact, just 280mm wide
- Touch screen control over time, speed and temperature
- Horizontally circular 19mm orbit for aeration & mixing
- Instantly exchange flask clamps with MAGIC Clamp™ accessories
- Program STEP feature for linking consecutive programs

**23%  
OFF**



| Code           | Temp Range, °C | Temp Uniformity/ Accuracy, ±% | Speed Range, RPM | Orbit, mm | Dims, w x d x h, mm | Weight, kg | List Price £   | Offer Price £  |
|----------------|----------------|-------------------------------|------------------|-----------|---------------------|------------|----------------|----------------|
| <b>F151359</b> | Ambient +5-70  | 0.25/0.1                      | 30-300           | 19        | 280 x 480 x 330     | 11.5       | <b>2606.00</b> | <b>2000.00</b> |

## 15% discount off a selected list of Corning® CoolCell® products\*

CORNING



Register your next FBS batch reservation testing date with your local SLS Territory Sales Manager or Corning Sales Segment Specialist and receive 15% discount off a selected list of Corning CoolCell products.\*



If you order 10+ bottles then you will also receive a free pack of Corning CoolCell grippers\*\*.



**For FBS registrations from February 1, 2021 through May 31, 2021**

### To redeem this promotion:

Contact your Local SLS Territory Sales Manager or Corning Sales Segment Specialist and quote "FBS Focus 2021" to register. Terms and Conditions: Registration information must be received by May 31, 2021.

\*Selected list of Corning CoolCell products are available upon request from your Local SLS Territory Sales Manager or Corning Sales Segment Specialist.

\*\*Free goods shipped separately and limited to 1 set of grippers per lab.

© 2021 Corning Incorporated. All rights reserved. 1/21 AD-SLS Focus Brochure Promo-21

## Stuart Incubated Shakers



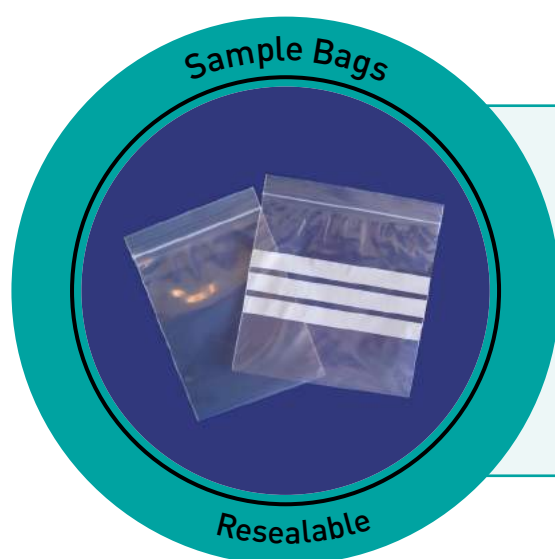
stuart

- Temperature range: Ambient +5°C to 60°C
- Versatile clamping system, securing most sizes and mixtures of flasks or bottles
- Provides an orbital shaking motion, adjustable between 30 to 300rpm with a gentle start action.
- Digital timer can be set from 1 second to 9 days
- Combined incubator shakers
- Digital display for temperature and speed
- Unique retractable platform for easy loading and unloading
- Angle adjustable accessory tube racks
- Communications enabled for external temperature measurement
- With BioCote antimicrobial protection
- Max load: 10kg

**20%  
OFF**



| Code           | Description                    | Capacity, L | Platform Dims, mm | Overall Dims, w x d x h, mm | Weight, kg | List Price £ | Offer Price £ |
|----------------|--------------------------------|-------------|-------------------|-----------------------------|------------|--------------|---------------|
| <b>F151005</b> | Stuart SI500 Shaking Incubator | 51          | 335 x 335         | 450 x 474 x 522             | 30         | 3763.39      | 3011.00       |
| <b>F151006</b> | Stuart SI600 Shaking Incubator | 115         | 525 x 390         | 675 x 542 x 642             | 55         | 4677.40      | 3742.00       |



### PE Resealable Sample Bags

Supplied in packs of 100

| Code           | Dims, w x l, mm | List Price £ |
|----------------|-----------------|--------------|
| <b>BAG1006</b> | 100 x 140       | 4.34         |



## OHAUS Achiever™ 5000 Overhead Stirrers

NEW



Powerful mixing and constant speed is assured with the brushless motor and torque compensation technology - delivering accurate, controlled stirring of viscous liquids with quiet operation.

- Display: Bright LED digital display for speed, real time torque tendency LED indicator bar, and integrated timer
- Operation: Stirring from 6 rpm to 2000 rpm with speed accuracy of 1 rpm and maximum torque from 20 Ncm to 200 Ncm depending on model, stable torque at any speed, and volume capacity ranging from 25L to 100L
- Construction: Sealed aluminium housing with IP54 ingress protection rating, Keyless Chuck for simple, one-hand operation, brushless motor for quiet operation, and main power switch
- Design Features: Compact design for easy handling, keyless chuck, simple knob control, lock button to prevent unintentional setting changes, full protection for overload, overtemperature and overcurrent conditions

See website for accessories



**30%  
OFF**

| Code           | Description | Speed Range, RPM | Capacity, L | Sample Viscosity, mPa-s | List Price £ | Offer Price £ |
|----------------|-------------|------------------|-------------|-------------------------|--------------|---------------|
| <b>F151086</b> | e-A51ST020  | 30-2000          | 25          | 10000                   | 801.00       | 561.00        |
| <b>F151087</b> | e-A51ST040  | 30-2000          | 25          | 25000                   | 863.00       | 604.00        |
| <b>F151088</b> | e-A51ST060  | 30-2000          | 40          | 50000                   | 979.00       | 685.00        |
| <b>F151089</b> | e-A51ST100  | 30-1300          | 100         | 70000                   | 1424.00      | 997.00        |
| <b>F151090</b> | e-A51ST200  | 6-400; 30-2000   | 100         | 100000                  | 1602.00      | 1121.00       |

## Techne Prime Thermal Cyclers



Designed for easy programming via a touch screen interface for increased flexibility and high performance. Gradient functionality can be accessed directly through the G model whilst the base models can be upgraded to add this functionality if required at a later date.

- Compact footprint
- Colour touchscreen for ease of programming
- Temperature range 10 to 100°C,
- 3°C/sec ramp rate
- Compatible with different block sizes available separately



| Code           | Description                     | Tube Capacity  | List Price £ | Offer Price £ |
|----------------|---------------------------------|----------------|--------------|---------------|
| <b>F151011</b> | 3PrimeG Gradient Thermal Cycler | 48 x 0.2mL     | 3103.13      | 2483.00       |
| <b>F151012</b> | Prime Thermal Cycler            | 96 x 0.2mL     | 3344.00      | 2675.00       |
| <b>F151013</b> | Prime Thermal Cycler            | 384-Well Block | 3344.00      | 2675.00       |

## SLS Flowgen MultiSUB Choice Tanks



With two wide tray options (150 x 100 and 150 x 150mm) and multichannel pipette compatible combs for speed loading, MultiSUB Choice offers a wide degree of flexibility.

Ideal for restriction fragment analysis, sample prep or checking of high sample numbers

- Run up to 210 samples
- Low buffer volumes
- Multichannel pipette compatible combs for speed loading
- Supplied with 2 x 20 sample combs, loading guides and dams

See website for more electrophoresis offers!



| Code              | Description        | Gel Dims, w x l, mm | MaxCapacity | List Price £ | Offer Price £ |
|-------------------|--------------------|---------------------|-------------|--------------|---------------|
| <b>MSCHOICE10</b> | MultiSUB Choice 10 | 150 x 100           | 140 samples | 378.00       | 245.00        |
| <b>MSCHOICE15</b> | MultiSUB Choice 15 | 150 x 150           | 210 samples | 378.00       | 245.00        |



## TAE Buffer (50X) Concentration for Agarose DNA Electrophoresis - 1L

| Code    | List Price £ | Offer Price £ |
|---------|--------------|---------------|
| F151710 | 79.60        | 43.78         |

OVER  
**45%  
OFF**

## SLS Flowgen Mini Rapide Tank

2  
YEARS

35%  
OFF



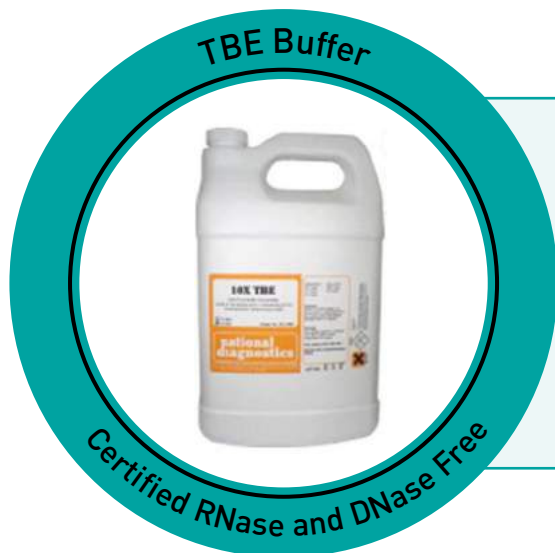
An ultra-compact self-contained system for routine molecular biology procedures and quick checks of samples. Buffer and gel volumes kept to a minimum to maximise current and separation speed.

- A convenient self contained solution for routine agarose gel electrophoresis
- Ultra compact
- Low buffer volumes
- Multichannel pipette compatible combs for speed loading



See website for more electrophoresis offers!

| Code   | Dims, w x d x h, mm | Supplied with                          | List Price £ | Offer Price £ |
|--------|---------------------|--|--------------|---------------|
| FMMS10 | 150 x 150 x 40      | 2 x 8 sample combs 1.5mm, casting dams | 302.00       | 196.00        |



## TBE Buffer 10X Concentration for DNA/RNA Electrophoresis - 4L

| Code    | List Price £ | Offer Price £ |
|---------|--------------|---------------|
| F151711 | 76.30        | 41.96         |

OVER  
**45%  
OFF**

## Cleaver nanoPAC-300P Power Supply

2 YEARS

Cleaver  
SCIENTIFIC

- Ideal for use with DNA/RNA (Horizontal) and protein (vertical) electrophoresis systems
- Includes a simple two step feature which allows users to set a programmable change in voltage/current/time during the run
- Enhanced in-built safety features
- A conspicuous 3-digit LED
- Alarm function
- Wipe-clean polycarbonate housing

20%  
OFF



| Code               | Max Voltage, V | Max Current, mA | Max Power, W | Output Pairs | Dims, w x d x h, mm | List Price £ | Offer Price £ |
|--------------------|----------------|-----------------|--------------|--------------|---------------------|--------------|---------------|
| <b>NANOPAC-300</b> | 300            | 400             | 60           | 2            | 140 x 191 x 84      | 342.00       | 273.00        |

## Cleaver PowerPro 300 Power Supply

2 YEARS

Cleaver  
SCIENTIFIC

The PowerPro 300 is the ideal power supply for routine horizontal electrophoresis using multiSUB Mini, Midi and Choice and vertical electrophoresis using omniPAGE Mini.

- With built in pre-set protocols.
- 2.4" LCD screen
- Browse preset and saved protocols, store up to 30 programmes with up to 6 steps
- Can be operated at constant voltage, constant current or constant power and
- Pause/resume key allows any run to be temporarily halted and restarted from the same position

20%  
OFF



| Code           | Max Voltage, V | Max Current, mA | Max Power, W | Output Pairs | Dims, w x d x h, mm | List Price £ | Offer Price £ |
|----------------|----------------|-----------------|--------------|--------------|---------------------|--------------|---------------|
| <b>ELE2600</b> | 300            | 400             | 60           | 2            | 215 x 335 x 104     | 436.00       | 348.00        |

# Mettler Toledo SevenCompact™ S210 pH Meter Bundles



The SevenCompact™ pH meter S210 is the perfect choice for a wide range of applications. Starting a measurement or calibration has never been easier, requiring only a single key-press.

- Fast and accurate measurements
- 4.3-inch high resolution colour display
- GLP compliant
- Intelligent Sensor Management® to automatically identify the sensor upon connection
- Automatic buffer recognition
- Service offering, including IQ/OQ
- Watertight and dustproof (IP54)
- All supplied with electrode holder and protective cover

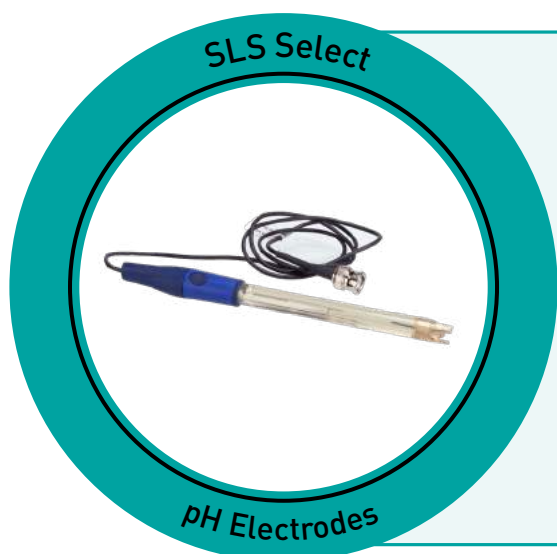
**30% OFF**  
with FREE  
pH Buffer  
Pack



Each bundle supplied with FREE pH Buffer Rainbow

Kit containing 2x 250mL each pH 4.01/7.00/9.21

| Code           | Description                      | Supplied with               | List Price £ | Offer Price £ |
|----------------|----------------------------------|-----------------------------|--------------|---------------|
| <b>F151375</b> | S210 Standard pH/mV Meter Bundle | InLab Expert Pro-ISM Probe  | 844.00       | 591.00        |
| <b>F151376</b> | S210 Biotech pH/mV Meter Bundle  | InLab Routine Pro-ISM Probe | 885.00       | 620.00        |



## SLS Select pH Electrodes

**30% OFF**

Each combination electrode is supplied with 1m length of cable and a BNC plug. All electrodes have a pH range of 0-14 and a temperature range of 0-80°C. Suitable for liquid applications.

| Code           | Body Material | Junction        | Length, mm | Width, mm | List Price £ | Offer Price £ |
|----------------|---------------|-----------------|------------|-----------|--------------|---------------|
| <b>F151369</b> | Epoxy         | Porous Teflon   | 120        | 12        | 52.00        | 36.00         |
| <b>F151370</b> | Glass         | Annular Ceramic | 120        | 12        | 52.00        | 36.00         |



# Thermo Scientific™ Orion Star™ A211 Benchtop pH Meters



**Thermo**  
SCIENTIFIC

Record accurate and reliable pH, mV, ORP and temperature measurements with the A211 pH Benchtop Meter.

- Perform up to a five point pH calibration using automatic buffer recognition of NIST or DIN buffer groups with choice to manually enter custom buffer values
- Calibration editing option allows individual points to be fixed without a full recalibration
- Informative, easy-to-read backlit graphic display with clear onscreen instructions simplifies operation
- Capture your critical readings with measurement stability indicator and selectable read modes
- Calibration log stores ten most recent calibrations
- Non-volatile meter memory ensures your data and settings are protected, even with loss of power
- Orion Star Com software facilitates data transfer to a computer via USB or RS232 connections
- IP54-rated housing resists dust and splashes
- Each kit supplied with buffer kit, electrode stand, power adapter and computer cable



**30%  
OFF**

| Code           | Description                        | Supplied with  | List Price £ | Offer Price £ |
|----------------|------------------------------------|--|--------------|---------------|
| <b>F151038</b> | ROSS Difficult Sample Meter Kit    | Star A211 pH meter, 8172BNWP ROSS Sure-Flow glass-body pH electrode and 927007MD stainless steel ATC probe | 917.00       | 642.00        |
| <b>F151039</b> | Standard ROSS Meter Kit            | Star A211 pH meter and 8302BNUMD ROSS Ultra glass-body pH/ATC electrode                                    | 845.00       | 592.00        |
| <b>F151040</b> | Durable ROSS Meter Kit             | Star A211 pH meter and 8157BNUMD ROSS Ultra epoxy-body pH/ATC electrode                                    | 851.00       | 596.00        |
| <b>F151041</b> | General Purpose Meter Kit          | Star A211 pH meter and 9157BNMD epoxy-body pH/ATC electrode  | 788.00       | 552.00        |
| <b>F151042</b> | Separate pH & ATC Sensor Meter Kit | Star A211 pH meter, 8102BNUWP ROSS Ultra glass-body pH electrode and 927007MD stainless steel ATC probe    | 874.00       | 512.00        |
| <b>F151043</b> | Food & Beverage Meter Kit          | Star A211 pH meter, 9165BNWP Sure-Flow epoxy-body pH electrode and 927007MD stainless steel ATC probe      | 833.00       | 583.00        |

## Thermo Scientific™ Orion Star™ A111 Benchtop pH Meters



**Thermo**  
SCIENTIFIC

Take simple, routine pH, mV and temperature measurements with the A111 Benchtop pH Meter, an easy-to-use and budget-friendly instrument for basic pH analysis in the lab.

- Perform up to a three point pH calibration with easy recall of calibration points and slope
- Large, informative screen clearly shows the main information, including pH or mV reading, temperature, meter mode, calibration information and power source.
- Thermo Scientific™ AUTO-READ™ locks in the stable reading on your screen and ready indicator alerts when readings are stable
- The IP54-rated housing can handle splashes and can be wall-mounted if table space is a problem
- Each kit supplied with buffer kit, electrode stand and power adapter

**30%  
OFF**



| Code           | Description                    | Supplied with  | List Price £ | Offer Price £ |
|----------------|--------------------------------|--|--------------|---------------|
| <b>F151044</b> | Standard Meter Kit             | Star A111 pH meter and 9157BNMD epoxy-body pH/ATC electrode  | 574.00       | 402.00        |
| <b>F151045</b> | TRIS-Compatible Meter Kit      | Star A111 pH meter, GD9156BNWP Double Junction pH electrode and 927007MD stainless steel ATC probe | 625.00       | 438.00        |
| <b>F151046</b> | ROSS TRIS-Compatible Meter Kit | Star A111 pH meter and 8157BNUMD ROSS Ultra epoxy-body pH/ATC electrode                            | 781.00       | 547.00        |



### Corning® LSE™ Mini Microcentrifuge

- Includes an 8-place 1.5/2.0mL rotor with adapters for 0.5/0.4mL and 0.2mL tubes and a 4-place rotor for PCR strip tubes
- Fixed speed of 6000 rpm generates 2000 × g

**25%  
OFF**

| Code           | Dims, w x d x h, mm | List Price £ | Offer Price £ |
|----------------|---------------------|--------------|---------------|
| <b>F151061</b> | 148 x 174 x 122     | 184.19       | 139.00        |

## Benchmark MC-12™ High Speed Centrifuge

2  
YEARS

Benchmark  
Scientific

Benchmark's MC-12™ is the first and only compact microcentrifuge capable of achieving centrifugal speeds up to the critical threshold of 16,000 × g, often held as the standard for many molecular biology/DNA protocols.

- 12 tube capacity / Up to 16,100 × g
- Less than 9 in. wide
- Quick deceleration
- Whisper quiet operation



25%  
OFF

| Code           | Max Speed, RPM | Max Speed, x g | Dims, w x d x h, mm | Weight, kg | List Price £ | Offer Price £ |
|----------------|----------------|----------------|---------------------|------------|--------------|---------------|
| <b>F151252</b> | 15500          | 16100          | 220 x 270 x 150     | 4.8        | 1319.00      | 989.00        |

## Benchmark MC-24™ Touch High Speed Microcentrifuge with COMBI-Rotor™

2  
YEARS

Benchmark  
Scientific

Benchmark's MC-24™ Touch is the first microcentrifuge in its class to feature touch screen control. It also offers high speed and a unique COMBI-Rotor™ that accepts both standard microtubes (1.5/2.0mL) and PCR tubes/strips (0.2mL) without additional adapters.

- Full colour touch screen shows actual speed along with set and remaining time
- Up to 9 speed/time profiles can be stored in memory
- mySpin™ 1 button program recall
- COMBI-Rotor™ accepts tubes and strips
- Unique air-flow system, keeps samples cool
- Optional rotor/adapters available



35%  
OFF

| Code           | Max Speed, RPM | Max Speed, x g | Dims, w x d x h, mm | Weight, kg | List Price £ | Offer Price £ |
|----------------|----------------|----------------|---------------------|------------|--------------|---------------|
| <b>F151253</b> | 13500          | 16800          | 230 x 305 x 197     | 6.4        | 2179.00      | 1416.00       |

## OHAUS PR Analytical Balances



Designed for routine weighing applications in your workplace offering basic functionality for routine weighing applications. Designed for uncomplicated operation with easy-to-use display and interface with smart design and durable construction.

- 4 built in applications
- Backlight LCD display
- Constructed with ABS housing, removable stainless steel pan, glass draftshield with sliding top door, integrated weigh-below-hook, security bracket, and calibration lock
- User-selectable environmental filters, auto-tare, user-selectable span calibration points, software lockout and reset menu, user-selectable communication settings and data print options, overload/underload indicator, stability indicator

**30%  
OFF**



| Code           | Capacity, g | Readability, mg | Calibration | List Price £ | Offer Price £ |
|----------------|-------------|-----------------|-------------|--------------|---------------|
| <b>F151104</b> | 120         | 0.1             | External    | 795.00       | <b>557.00</b> |
| <b>F151105</b> | 120         | 0.1             | Internal    | 930.00       | <b>651.00</b> |
| <b>F151106</b> | 220         | 0.1             | External    | 865.00       | <b>606.00</b> |
| <b>F151107</b> | 220         | 0.1             | Internal    | 1000.00      | <b>700.00</b> |



## Incubating Heavy Duty Shakers

*Our new shakers can do  
the work of multiple devices  
with unparalleled efficiency*



***Ingeniously Practical***

Check the SLS website for the 'Focus Extra' launch offer

## OHAUS PR Precision Balances



Designed for routine weighing applications in your workplace offering basic functionality for routine weighing applications. Designed for uncomplicated operation with easy-to-use display and interface with smart design and durable construction.

- 4 built in applications
- Backlight LCD display
- Constructed with ABS housing, removable stainless steel pan, glass draftshield with sliding top door (on 0.001g models only), integrated weigh-below-hook, security bracket, and calibration lock
- Design features: User-selectable environmental filters and brightness settings, auto-tare, auto-dim, user-selectable span calibration points, software lockout and reset menu, user-selectable communication settings and data print options, software overload/underload indicator, stability indicator



| Code           | Capacity, g | Readability, g | Calibration | List Price £ | Offer Price £ |
|----------------|-------------|----------------|-------------|--------------|---------------|
| <b>F151108</b> | 220         | 0.001          | External    | 570.00       | <b>399.00</b> |
| <b>F151109</b> | 220         | 0.001          | Internal    | 700.00       | <b>490.00</b> |
| <b>F151110</b> | 420         | 0.001          | External    | 585.00       | <b>410.00</b> |
| <b>F151111</b> | 420         | 0.001          | Internal    | 715.00       | <b>501.00</b> |
| <b>F151112</b> | 520         | 0.001          | External    | 615.00       | <b>431.00</b> |
| <b>F151113</b> | 520         | 0.001          | Internal    | 750.00       | <b>525.00</b> |
| <b>F151114</b> | 1600        | 0.01           | External    | 585.00       | <b>410.00</b> |
| <b>F151115</b> | 1600        | 0.01           | Internal    | 715.00       | <b>501.00</b> |
| <b>F151116</b> | 2200        | 0.01           | External    | 605.00       | <b>424.00</b> |
| <b>F151117</b> | 2200        | 0.01           | Internal    | 740.00       | <b>518.00</b> |
| <b>F151118</b> | 4200        | 0.01           | External    | 630.00       | <b>441.00</b> |
| <b>F151119</b> | 4200        | 0.01           | Internal    | 765.00       | <b>536.00</b> |
| <b>F151120</b> | 4200        | 0.1            | External    | 535.00       | <b>375.00</b> |
| <b>F151121</b> | 4200        | 0.1            | Internal    | 665.00       | <b>466.00</b> |
| <b>F151122</b> | 6200        | 0.1            | External    | 555.00       | <b>389.00</b> |
| <b>F151123</b> | 6200        | 0.1            | Internal    | 685.00       | <b>480.00</b> |



## SLS Lab Pro A-Series Analytical Balances



These top-loading analytical balances have a compact footprint. The breeze break has rotary sliding doors that slide behind the balance and can be removed with one touch. These features, combined with the small footprint, make the balances ideal for applications where space is at a premium.

- Compact footprint
- Reverse backlit LCD display for easy to read weighing results
- Statistical calculation function eliminates the need for a stats printer
- Standard RS-232C
- Fast, compact SHS sensor, response time ~2 seconds



| Code           | Capacity, g | Readability, mg | Calibration | List Price £ | Offer Price £ |
|----------------|-------------|-----------------|-------------|--------------|---------------|
| <b>F151338</b> | 102         | 0.1             | External    | 856.00       | <b>514.00</b> |
| <b>F151336</b> | 102         | 0.1             | Internal    | 1040.00      | <b>624.00</b> |
| <b>F151339</b> | 152         | 0.1             | External    | 934.00       | <b>560.00</b> |
| <b>F151340</b> | 152         | 0.1             | Internal    | 1092.00      | <b>655.00</b> |
| <b>F151341</b> | 252         | 0.1             | External    | 1097.00      | <b>659.00</b> |
| <b>F151337</b> | 252         | 0.1             | Internal    | 1313.00      | <b>788.00</b> |

### Beakers



Packs of 10

## Polypropylene Beakers

With plastic moulded graduations.

Supplied in packs of 10.

| Code            | Capacity, mL | List Price £ |
|-----------------|--------------|--------------|
| <b>BEA60000</b> | 50           | 4.00         |
| <b>BEA60020</b> | 100          | 5.00         |
| <b>BEA60040</b> | 250          | 7.00         |
| <b>BEA60060</b> | 500          | 12.00        |
| <b>BEA60080</b> | 1000         | 18.50        |

## Grant SBB Aqua Plus Boiling Unstirred Waterbaths



grant

The SBB Aqua Plus boiling baths are robust, reliable and provide continuous 100°C operation. The range consists of four analogue models to suit a range of applications and any budget.

- Adjustable energy regulator provides steady boiling
- Constant level device maintains liquid level
- Robust and reliable design to withstand everyday wear and tear
- Simple, intuitive controls with quick and easy to set temperature
- Non-drip polycarbonate lid included as standard
- Temperature range: 0 to 100°C



15%  
OFF

| Code           | Capacity, L | Ext Dims, w x d x h, mm | Int Dims, w x l, mm | List Price £ | Offer Price £ |
|----------------|-------------|-------------------------|---------------------|--------------|---------------|
| <b>F151239</b> | 5           | 390 x 250 x 375         | 145 x 290           | 743.00       | 632.00        |
| <b>F151236</b> | 12          | 390 x 385 x 440         | 315 x 290           | 803.00       | 683.00        |
| <b>F151237</b> | 18          | 390 x 600 x 445         | 495 x 290           | 865.00       | 735.00        |
| <b>F151238</b> | 26          | 390 x 600 x 445         | 495 x 290           | 934.00       | 794.00        |

## Grant Aqua Pro Shaking Water Baths



grant

The Aqua Pro shaking water bath range offers exceptional temperature performance and usability. With three bath models to choose from, there is a shaking water bath to meet basic and demanding applications in research, industry and life sciences. Includes clear polycarbonate lid and universal tray included as standard, other shaking trays sold separately.

- Temperature range: ambient +5 to 99°C
- Stability:  $\pm 0.1^{\circ}\text{C}$
- Digital control/LED display
- Linear shaking speed 20 - 200 rpm
- Adjustable shaking speed and stroke length (OLS26)

15%  
OFF



| Code           | Model | Capacity, L | Shaking Mode     | Ext Dims, w x d x h, mm | Int. Dims, w x d, mm | List Price £ | Offer Price £ |
|----------------|-------|-------------|------------------|-------------------------|----------------------|--------------|---------------|
| <b>F151240</b> | OLS26 | 26          | Orbital + Linear | 325 x 565 x 335         | 380 x 235            | 2589.00      | 2201.00       |
| <b>F151241</b> | LSB12 | 12          | Linear           | 275 x 360 x 335         | 240 x 235            | 1864.00      | 1584.00       |
| <b>F151242</b> | LSB18 | 18          | Linear           | 275 x 595 x 335         | 420 x 235            | 2061.00      | 1752.00       |

## SLS Lab Pro Safevac Aspiration System



Designed for laboratory waste recovery and separation of liquid and solid. Can be widely used in cell culture, DNA extraction, microplate waste removal, and any other liquid separation or recovery.

- Vacuum power can be set to different levels to achieve 1–15mL/s aspirating speed
- Sensitive level sensor to prevent liquid overflow during operation
- Waste bottle, tubing and handle are fully autoclavable
- Lid, tubing and handle are easy for disassembling, cleaning and autoclaving
- Wide range of adapters to fit tubes and microplates

**50% OFF**



| Code           | Vacuum Range, mbar | Vacuum Speed, mL/S | Volume, L | Dims, w x d x h, mm | List Price £ | Offer Price £ |
|----------------|--------------------|--------------------|-----------|---------------------|--------------|---------------|
| <b>F151283</b> | 0-600              | 1-15               | 4         | 180 x 240 x 450     | 1150.00      | <b>575.00</b> |

## Epredia Shandon MX35 Ultra - Low Profile Microtome Blades



**25% OFF**

| Code           | Blade Angle ° | Pack | List Price £ | Offer Price £ |
|----------------|---------------|------|--------------|---------------|
| <b>F151367</b> | 34            | 50   | 74.00        | <b>55.00</b>  |

## SLS Lab Basics Inverso TC100 Inverted Microscope

1  
YEAR

SLS LAB  
BASICS

Ideal for the typical working laboratory and is built to a high-quality specification. It is robust enough to withstand the rigours of constant daily use and with a quintuple position nose-piece fitted as standard, it is ideally suited for multiple observation techniques and/or magnifications.

- Trinocular head inclined at 45°
- Eyepieces: 10/20mm wide field
- Objectives: 4X, 40X plan-achromatic LWD/10X, 20X, 40X Phase Contrast
- Condenser: NA 0.3 (removable), working distance 72mm
- Stage: 160 x 250mm with additional mechanical stage (2 interchangeable stage plates) stage extending board
- Focusing: coaxial coarse and fine
- Illumination: 3W LED

20%  
OFF



| Code    | Description                                      | List Price £ | Offer Price £ |
|---------|--|--------------|---------------|
| F151126 | SLS Lab Basics Inverso TC100 Inverted Microscope | 3319.00      | 2700.00       |

## SLS Lab Basics Tablet Microscope Camera

SLS LAB  
BASICS

Tablet camera especially designed for microscopy applications. Comes with a high-definition 9.7" colour LCD touchscreen and is equipped with software that allows the user to preview an image, set the white balance, capture images and videos as well as having measurement and annotation capabilities.

- Integral C-mount fitting
- RK3066 dual-core 1.5Hz CPU touch screen operation, can be used as a small computer
- Keyboard and mouse can also be used to operate
- Includes Wi-Fi and Bluetooth wireless networking for easy file exchange
- Storage: external SD memory card - up to 32GB

8%  
OFF



| Code    | CPU                    | Memory                | Camera                                     | List Price £ | Offer Price £ |
|---------|------------------------|-----------------------|--|--------------|---------------|
| F151127 | RK3066 dual-core 1.5Hz | ROM 2GB; RAM 1GB DDR3 | 15fps at 1024 x 768; 1/2.5 (4:3) 5Mpx CMOS | 928.00       | 850.00        |

## Jenway Genova Bio Life Science Spectrophotometers



Jenway®

This spectrophotometer measures across a UV/visible wavelength range of 198 to 800nm, with a narrow spectral bandwidth of 3nm.

The TrayCell is a fibre optic cuvette which can be used with as little as 0.7µL of sample. The cuvette is supplied with two caps which give path lengths of either 1mm or 0.2mm, thus creating a "virtual dilution" of 1:10 or 1:50 of the sample when compared to a measurement with a standard 10 mm cuvette.

- Pre-programmed for DNA, RNA and protein analysis
- Compatible with ultra-micro, semi-micro, micro and macro cuvettes
- Scanning diode array technology
- Colour touchscreen navigation
- Small footprint and lightweight (<3kg)
- Fast scan speed
- Multiple USB ports for data storage and printer connectivity



| Code           | Description  | List Price £ | Offer Price £ |
|----------------|--|--------------|---------------|
| <b>F151001</b> | Genova Bio Life Science Spectrophotometer with Micro-Cuvette Holder                        | 3096.02      | 2477.00       |
| <b>F151002</b> | Genova Bio Life Science Spectrophotometer with Micro-Cuvette Holder and TrayCell Accessory | 6039.89      | 4832.00       |

## BioDrop+ Microvolume UV/Vis Spectrophotometers



BioDrop®

BioDrop spectrophotometers come with intuitive and easy to use software and a USB port for PC control and data export. BioDrop Resolution software is pre programmed for DNA, RNA, oligo, fluorescent dye labelling efficiency, T<sub>m</sub> calculation, quick measurements and colourimetric protein methods (with standard 10mm cuvette only).

- Light source: pulsed xenon lamp with a 3 year warranty
- Colour Touchscreen
- Wavelength range, nm: 190 - 1100
- Absorbance range: 0.3A - 2.5A
- DNA detection limit (ng/µL): 1
- Micro-volume port - simply pipette 0.5µL or more in the centre, measure, then wipe clean; Duo+ also comes with a standard 10 x 10mm cuvette port
- Output: USB port
- Dims, mm, 260 x 420 x 185



| Code           | Description  | List Price £ | Offer Price £ |
|----------------|--|--------------|---------------|
| <b>F151128</b> | BioDrop µLite+ Spectrophotometer with 0.5mm Micro-Volume Port                      | 6490.00      | 5192.00       |
| <b>F151129</b> | BioDrop Duo+ Spectrophotometer with 10mm Cell Holder and 0.5mm Micro-Volume Port   | 7571.00      | 6057.00       |
| <b>F151130</b> | BioDrop µLite+ Spectrophotometer with 0.5mm Micro-Volume Port and Built-In Printer | 6869.00      | 5495.00       |



## Welch MPC Chemical Duty Vacuum Filtration Diaphragm Pump



Suitable for vacuum filtration and desiccation applications. The standard equipment of a high accuracy regulator allows for soft start filtration, to prevent damage to the filter membrane, whilst allowing a powerful final vacuum level to be achieved for fast results. A built-in catch pot prevents accidental ingestion of liquid into the pump.

- Chemical resistant
- Oil free
- Two heads, one stage
- Ultra quiet operation and long service life



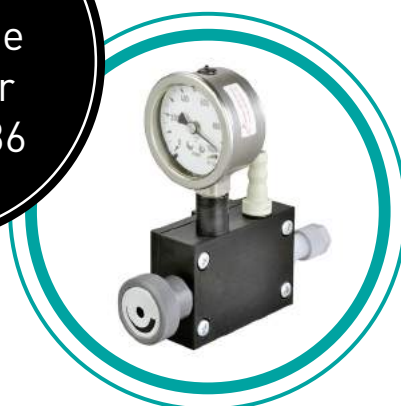
| Code           | Model   | Flow Rate, L/min | Ultimate Vacuum, mbar | Dims, w x d x h, mm | List Price £ | Offer Price £ |
|----------------|---------|------------------|-----------------------|---------------------|--------------|---------------|
| <b>F151714</b> | MPC090E | 15               | 100                   | 144 x 198 x 244     | 595.00       | 476.00        |

## Welch MPC Chemical Duty Diaphragm Vacuum Pumps



Welch MPC chemical duty diaphragm vacuum pumps have been developed specifically to meet the requirement for oil-free vacuum generation. Their low weight and excellent ergonomics, make Welch diaphragm pumps the first choice for most laboratory applications. MPC models use PTFE and other fluorinated plastics for the wetted parts to allow aggressive solvent and acid vapours to be pumped.

- Analytically pure, oil free vacuum
- User friendly
- Lightweight, rugged design
- Designed for continuous operation
- Maintenance-free drive system and proven long diaphragm life
- Minimal operation vibration



| Code           | Model   | Flow Rate, L/min | Ultimate Vacuum, mbar | Dims, w x d x h, mm | List Price £ | Offer Price £ |
|----------------|---------|------------------|-----------------------|---------------------|--------------|---------------|
| <b>F151371</b> | MPC105T | 20               | 2                     | 235 x 189 x 277     | 1611.00      | 1375.00       |
| <b>F151372</b> | MPC095Z | 15               | 5                     | 235 x 189 x 277     | 1081.00      | 845.00        |

## INTEGRA Biosciences DOSE IT Peristaltic Pump



INTEGRA

DOSE IT the peristaltic pump which makes dispensing culture media, buffers and other solutions easy and efficient. Suitable for a broad range of dose volumes DOSE IT can dispense with high accuracy since it is compatible with tubing from 1mm bore for small doses to 8mm tubing for high-throughput pumping. Supplied with 1x tubing (inner Ø 4mm, length 2.5m), 2x aspiration/dispensing tubes (length 10cm, stainless steel, one end dented), and 1x aspiration/dispensing tube (length 35cm, stainless steel, one end dented).

20%  
OFF



| Code           | Dose Volume, mL | Flow rate, mL/min | Weight, kg | Dims, w x d x h, mm | List Price £ | Offer Price £ |
|----------------|-----------------|-------------------|------------|---------------------|--------------|---------------|
| <b>F151368</b> | 0.1-9999        | 0.6-5000          | 3.5        | 191 x 203 x 210     | 3108.00      | 2486.00       |

## LEEC Culture Safe CO<sub>2</sub> Incubators



- Electro-polished, one-piece chamber made from high grade 304 stainless steel
- Anti-bacterial powder coat paint finish
- Inner glass door and side access port
- 160°C decontamination option (P190D); 200°C sterilisation (S models)
- Simple control system on Precision models; touch screen controller on Touch models
- No internal fan (less risk of contamination)
- 6 sided direct heating system with high performance insulation
- Temperature range: +5 to +60°C; CO<sub>2</sub> range 0-20%

30%  
OFF



| Code           | Alt Ref | Model     | Capacity, L | Int Dims, w x d x h, mm | Ext Dims, w x d x h, mm | List Price £ | Offer Price £ |
|----------------|---------|-----------|-------------|-------------------------|-------------------------|--------------|---------------|
| <b>F151200</b> | P50     | Precision | 50          | 402 x 300 x 402         | 534 x 460 x 736         | 3909.00      | 2736.00       |
| <b>F151198</b> | P190    | Precision | 190         | 634 x 440 x 686         | 765 x 740 x 862         | 4522.00      | 3172.00       |
| <b>F151199</b> | P190D   | Precision | 190         | 634 x 440 x 686         | 765 x 740 x 862         | 4763.00      | 3334.00       |
| <b>F151203</b> | T50S    | Touch     | 50          | 402 x 300 x 402         | 534 x 460 x 717         | 4830.00      | 3381.00       |
| <b>F151201</b> | T190    | Touch     | 190         | 632 x 440 x 686         | 765 x 734 x 862         | 5940.00      | 4158.00       |
| <b>F151202</b> | T190S   | Touch     | 190         | 632 x 440 x 686         | 765 x 734 x 862         | 6377.00      | 4464.00       |

## LTE IP Series Incubators

5  
YEARS

LTE

The IP Series of incubators offers maximum flexibility and unparalleled performance with fast heat-up times, almost undetectable overshoot and superb accuracy make the IP Series a class-leading product.

**U models:** uni-program system offers single temperature selection and control. Following a mains power failure, the controller will automatically reinstate.

**M models:** multi-program controller allows up to 8 multiple-step cycles to be stored in the memory. It incorporates a selectable temperature ramping function, which allows controlled temperature rise and fall rates to be programmed into a cycle. At the end of a program sequence, the controller can be programmed to stop or repeat the sequence again. Following a mains power failure, M models have 3 recovery options.

- Temperature range 30 to 80°C
- Digital display of set and actual temperatures (and programmed features on M models)
- Class 2 over-temperature protection
- Stainless steel radiused interiors
- Anti-bacterial epoxy powder coating
- Special promotional 5 year warranty included



| Code    | Model | Capacity, L | Air Circulation    | Shelf Positions | Int Dims, w x d x h, mm | Ext Dims, w x d x h, mm | List Price £ | Offer Price £ |
|---------|-------|-------------|--------------------|-----------------|-------------------------|-------------------------|--------------|---------------|
| F151220 | U     | 60          | Natural Convection | 2/6             | 400 x 400 x 400         | 735 x 575 x 590         | 1560.00      | 1404.00       |
| F151221 | U     | 60          | Fan Circulation    | 2/6             | 400 x 400 x 400         | 735 x 575 x 590         | 1720.00      | 1548.00       |
| F151222 | M     | 60          | Natural Convection | 2/6             | 400 x 400 x 400         | 735 x 575 x 590         | 2064.00      | 1858.00       |
| F151223 | M     | 60          | Fan Circulation    | 2/6             | 400 x 400 x 400         | 735 x 575 x 590         | 2253.00      | 2028.00       |
| F151224 | U     | 100         | Natural Convection | 2/8             | 500 x 400 x 500         | 835 x 575 x 690         | 1702.00      | 1532.00       |
| F151225 | U     | 100         | Fan Circulation    | 2/8             | 500 x 400 x 500         | 835 x 575 x 690         | 1875.00      | 1688.00       |
| F151226 | M     | 100         | Natural Convection | 2/8             | 500 x 400 x 500         | 835 x 575 x 690         | 2222.00      | 2000.00       |
| F151227 | M     | 100         | Fan Circulation    | 2/8             | 500 x 400 x 500         | 835 x 575 x 690         | 2432.00      | 2189.00       |
| F151228 | U     | 150         | Natural Convection | 2/10            | 500 x 500 x 600         | 835 x 675 x 790         | 2189.00      | 1970.00       |
| F151229 | U     | 150         | Fan Circulation    | 2/10            | 500 x 500 x 600         | 835 x 675 x 790         | 2405.00      | 2165.00       |
| F151230 | M     | 150         | Natural Convection | 2/10            | 500 x 500 x 600         | 835 x 675 x 790         | 2822.00      | 2540.00       |
| F151231 | M     | 150         | Fan Circulation    | 2/10            | 500 x 500 x 600         | 835 x 675 x 790         | 3021.00      | 2719.00       |
| F151232 | U     | 250         | Natural Convection | 3/18            | 500 x 500 x 1000        | 835 x 675 x 1190        | 2807.00      | 2526.00       |
| F151233 | U     | 250         | Fan Circulation    | 3/18            | 500 x 500 x 1000        | 835 x 675 x 1190        | 3023.00      | 2721.00       |
| F151234 | M     | 250         | Natural Convection | 3/18            | 500 x 500 x 1000        | 835 x 675 x 1190        | 3375.00      | 3038.00       |
| F151235 | M     | 250         | Fan Circulation    | 3/18            | 500 x 500 x 1000        | 835 x 675 x 1190        | 3623.00      | 3261.00       |

## LMS Series 4 Cooled Incubators



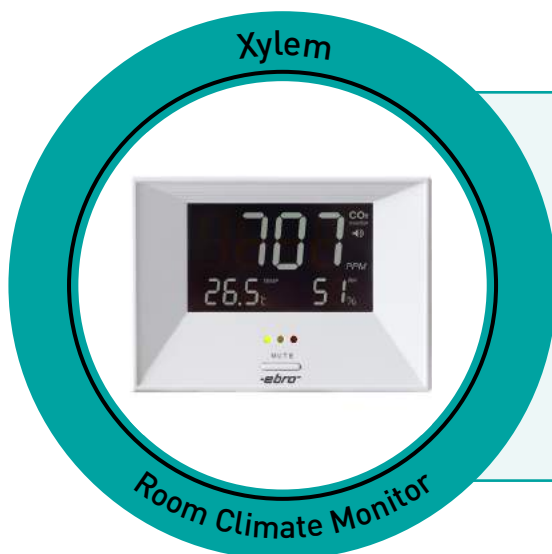
**LMS**

Offering reliable and accurate temperature control, operating between -10°C to +50°C. The design of these cabinets facilitates the addition of optional extras to provide even greater flexibility for individual applications. The range comprise of 2 cabinet sizes, 600 and 1200L capacity. These cabinets offer the ability to cope with large workloads and the flexibility with the addition of optional extras to suit most applications.

- Digital set/display
- Fan-assisted circulation
- Hermetically-sealed refrigeration system
- Self-evaporating condensation drip tray
- Preset overheat protection
- For 220/240V, single phase supply
- Stainless steel interior and exterior
- A full range of upgrades including fruit fly modification are also available to suit your requirements, please enquire for details



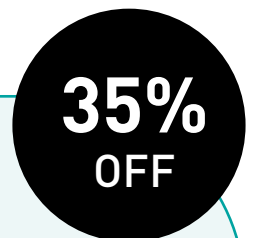
| Code           | Capacity, L | Control            | No. of Shelves | Ext Dims, w x d x h, mm | List Price £   | Offer Price £  |
|----------------|-------------|--------------------|----------------|-------------------------|----------------|----------------|
| <b>F151149</b> | 600         | Single Set Point   | 5              | 800 x 900 x 2080        | <b>5178.00</b> | <b>4401.00</b> |
| <b>F151150</b> | 600         | Fully Programmable | 5              | 800 x 900 x 2080        | <b>5543.00</b> | <b>4712.00</b> |
| <b>F151151</b> | 1200        | Single Set Point   | 10             | 1500 x 900 x 1080       | <b>6890.00</b> | <b>5857.00</b> |
| <b>F151152</b> | 1200        | Fully Programmable | 10             | 1500 x 900 x 1080       | <b>7205.00</b> | <b>6124.00</b> |

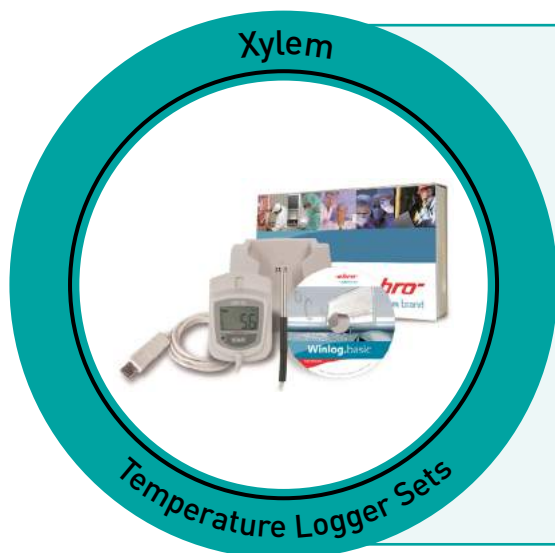


### Xylem Ebro RM 100 Room Climate Monitor

The room climate monitor RM 100 measures the air temperature, humidity and CO<sub>2</sub> value.

| Code           | Dims, w x d x h, mm | Weight, g | Display | List Price £  | Offer Price £ |
|----------------|---------------------|-----------|---------|---------------|---------------|
| <b>F151131</b> | 137 x 51 x 99       | 200       | LCD     | <b>138.00</b> | <b>90.00</b>  |





## Xylem Ebros EBI 20 Temperature Logger Sets

**30%  
OFF**

| Code           | Description   | List Price £ | Offer Price £ |
|----------------|---|--------------|---------------|
| <b>F151139</b> | TF Temperature Data Logger with External Sensor (Food-Logger) | 210.00       | 147.00        |
| <b>F151146</b> | T1 Temperature Data Logger with Internal Sensor               | 150.00       | 97.00         |
| <b>F151147</b> | TE1 Temperature Data Logger with External Penetration Probe   | 188.00       | 132.00        |
| <b>F151148</b> | TH1 Humidity/Temperature Data Logger with Internal Sensor     | 173.00       | 121.00        |

## Liebherr LGv5010 Mediline Freezer



**LIEBHERR**

- Features no frost technology
- Temperature is accurate to 0.1°C and shown in real time
- Advanced comfort digital electronic temperature display
- Visual & audio fault warning alarms (high/low temp & door open)
- Door lock
- Self-closing door
- Environmentally friendly refrigerant used
- Comes with 8 removable drawers and 2 removable baskets



| Code           | Temp Range, °C | Capacity, L | Dims, w x d x h, mm | List Price £ | Offer Price £ |
|----------------|----------------|-------------|---------------------|--------------|---------------|
| <b>F151665</b> | -9 to -35      | 478         | 747 x 750 x 1844    | 2869.00      | 2008.00       |



## Liebherr LKv5710 Medline Refrigerator



**LIEBHERR**

- Temperature is accurate to 0.1°C and shown in real time
- Forced air cooling, automatic defrost
- Electronic controller (which can be set in the temperature range)
- Digital temperature display
- Visual & audio fault warning alarms (high/low temp & door open)
- Integrated data memory
- Door lock
- Self-closing door
- Environmentally friendly refrigerant used
- Five adjustable shelves, 60kg loading capacity each shelf

**30%  
OFF**



| Code           | Temp Range, °C | Capacity, L | Dims, w x d x h, mm | List Price £ | Offer Price £  |
|----------------|----------------|-------------|---------------------|--------------|----------------|
| <b>F151666</b> | +3 to +16      | 583         | 751 x 750 x 1844    | 2199.00      | <b>1539.00</b> |

## Liebherr LCexv4010 Medline Fridge Freezer



**LIEBHERR**

- Forced air cooling, automatic defrost
- Digital temperature display
- Visual & audio fault warning alarms (high/low temp & door open)
- Door lock
- Self-closing door
- Environmentally friendly refrigerant used
- Five adjustable fridge shelves, 40kg loading capacity each shelf and three removable freezer drawers

**30%  
OFF**



| Code           | Temp Range, °C       | Capacity, L (Freezer) | Capacity, L (Fridge) | Dims, w x d x h, mm | List Price £ | Offer Price £  |
|----------------|----------------------|-----------------------|----------------------|---------------------|--------------|----------------|
| <b>F151667</b> | -9 to -30; +3 to +16 | 107                   | 254                  | 601 x 618 x 2003    | 2269.00      | <b>1588.00</b> |

## SLS Lab Pro PurA-Q+ Type 1 & 2 Water Purification Systems



PurA-Q+ combines ultrapure (type 1) and DI (type 2) water in one unit saving you money and space. The system is fed from mains water and produces Type 2 DI water up to 160L/day into a reservoir size of your choice. Choose a Type 2 production rate to suit your requirements, 10 or 20L/hour. The PurA-Q+ also produces Type 1 Ultrapure water at 18.2 MΩ-cm swiftly on demand from the integrated dispenser or optional remote dispenser at up to 2L/min. The output can either be continuous or volumetrically dispensed with an intuitive and simple software control.

- Quick-change consumables with a realistic cost (first pack included)
- Novel recirculation loop extends the life of membranes and cartridges
- Bench, wall or reservoir top mounting
- Choice of storage reservoir: 30, 60L or 100L (required)
- Comprehensive monitoring of water quality including TOC (Total Organic Carbon)
- Integral boost pump
- Ultrafiltration option to remove pyrogens (bacterial endotoxins) and nucleases

**46%  
OFF**



| Code           | Model    | Type 2 Water Rate. L/hr | Dispenser | Ultrafiltration | List Price £ | Offer Price £ |
|----------------|----------|-------------------------|-----------|-----------------|--------------|---------------|
| <b>F151352</b> | +10      | 10                      | Integral  | No              | 8519.00      | 4590.00       |
| <b>F151353</b> | +10 R    | 10                      | Remote    | No              | 8914.00      | 4800.00       |
| <b>F151351</b> | +10 UF   | 10                      | Integral  | Yes             | 8497.00      | 4715.00       |
| <b>F151354</b> | +10 UF R | 10                      | Remote    | Yes             | 9149.00      | 4925.00       |
| <b>F151355</b> | +20      | 20                      | Integral  | No              | 9268.00      | 4995.00       |
| <b>F151356</b> | +20 R    | 20                      | Remote    | No              | 9674.00      | 5210.00       |
| <b>F151357</b> | +20 UF   | 20                      | Integral  | Yes             | 9514.00      | 5125.00       |
| <b>F151358</b> | +20 UF R | 20                      | Remote    | Yes             | 9909.00      | 5335.00       |

### Reservoirs

| Code           | Capacity, L | Dims, w x d x h, mm | List Price £ | Offer Price £ |
|----------------|-------------|---------------------|--------------|---------------|
| <b>F151364</b> | 30          | 405 x 230 x 495     | 780.00       | 435.00        |
| <b>F151365</b> | 60          | 405 x 330 x 495     | 913.00       | 510.00        |
| <b>F151366</b> | 100         | 480 x 360 x 810     | 1340.00      | 740.00        |

Astell's SQUARE autoclave range offers the choice of seven different chamber sizes ranging from 125 to 735 litres and various heating, loading and door options. The SQUARE range is suitable for sterilising glassware, fluids, waste and porous type loads (subject to configuration). Astell's SQUARE autoclaves are regularly used in scientific research laboratories, production process manufacturing, veterinary and medical healthcare, food and beverage industries and many more.

## Including:

- Digital Touchscreen Controller
- Automatic Sliding Door
- Powerful and Efficient 48kW Integral Steam Generator
- Advanced Pulsar Vacuum System for enhanced air removal and drying
- Heating and Cooling Vessel Jacket for accelerated process times and dried sterilized loads
- Load Sensed Process Timing probe to improve liquid sterilisation times
- Air Ballast to mitigate liquid boil-over

- Chamber Shelving
- Morrison Discard Container
- Water Softening Unit
- Capacity for wide array of additional options, customisations, and modifications

**FREE Load Sense Process Timer probe, Air Ballast feature and Morrison Discard Container**



| Code           | Volume, L | Doors  | Door Mech.     | Steam Generator | Chamber Dims, w x d x h, mm | Overall Dims, w x d x h, mm | List Price £    | Offer Price £   |
|----------------|-----------|--------|----------------|-----------------|-----------------------------|-----------------------------|-----------------|-----------------|
| <b>F151153</b> | 125       | 1      | Auto or Manual | 24kW            | 500 x 500 x 500             | 780 x 1300 x 2000           | <b>38800.00</b> | <b>32980.00</b> |
| <b>F151154</b> | 216       | 1      | Auto or Manual | 24kW            | 600 x 600 x 600             | 880 x 1400 x 2000           | <b>42045.00</b> | <b>35738.00</b> |
| <b>F151155</b> | 250       | 1 or 2 | Auto or Manual | 24kW            | 500 x 1000 x 500            | 880 x 1750 x 2000           | <b>42475.00</b> | <b>36103.00</b> |
| <b>F151156</b> | 360       | 1 or 2 | Auto           | 24kW            | 600 x 1000 x 600            | 880 x 1750 x 2000           | <b>42905.00</b> | <b>36469.00</b> |
| <b>F151157</b> | 490       | 1 or 2 | Auto           | 48kW            | 700 x 1000 x 700            | 1250/1500 x 1700 x 2000     | <b>45145.00</b> | <b>38373.00</b> |
| <b>F151158</b> | 612       | 1 or 2 | Auto           | 48kW            | 700 x 1250 x 700            | 1250/1500 x 2000 x 2000     | <b>49395.00</b> | <b>41986.00</b> |
| <b>F151159</b> | 735       | 1 or 2 | Auto           | 48kW/72kW       | 700 x 1500 x 700            | 1250/1500 x 2300 x 2000     | <b>55885.00</b> | <b>47502.00</b> |

# Syngene NuGenius Gel Documentation System



NuGenius is a compact gel documentation workstation, which uses a choice of UV, blue or white lighting options giving the flexibility to image fluorescent and visibly stained gels at the workstation. A groundbreaking 5 million pixel CCD camera gives superb pixel resolution and unrivalled sensitivity, and offers a maximum viewing area of 20 x 24cm which is very large for such a small, compact unit.

- Compact workstation - plenty of bench space for your research
- Complete with built-in processor, touch screen and NuGenius software
- Easily capture and edit images on screen without a computer
- Motor driven zoom lens - automatic set up for easy image capture
- 5m pixel camera - resolves close bands and detects nanogram amounts

Save over  
**£1,500**



| Code    | List Price £ | Offer Price £ | FREE transilluminator (20 x 24cm, 302nm), visible light converter, UV to blue light converter and NuGenius network kit |
|---------|--------------|---------------|--|
| F151660 | 7128.00      | 5700.00       |  |



Syngene is a world-leading supplier of gel documentation (gel doc) systems for rapid, accurate imaging and analysis. We are specialists in:

- Gel Documentation
- Fluorescence imaging
- Western blot imaging
- Multiplex fluorescence westerns
- Visible protein imaging

## Featuring

- **User friendly software and hardware**
- **Free of charge software updates**
- **3 year warranty**
- **UK manufacturing**

**More than 35 YEARS OF IMAGING EXCELLENCE**

**NuGenius - Integrated imaging system for DNA and protein analysis and gel documentation.**

**G:BOX Chemi XRQ - gel doc system with high resolution, cooled camera and application for fluorescence and chemiluminescence applications**

\*For info on whole Syngene range contact SLS

## Anvajo fluidlab R-300 Cell Counter/Spectrometer with FREE Accessories



The compact fluidlab R-300 combines a full-fledged spectrometer with an automatic cell counter. Its intuitive handling and precise measurements make the fluidlab R-300 the laboratory instrument of the future. With standard cuvettes as well as with glass sample carriers from anvajo a variety of analyses such as absorbance, automatic cell counting and staining-free viability measurements can be performed.

fluidlab R-300 analytical device for:

- Cell Counting in the range from 3-80  $\mu\text{m}$
- Viability measurement in the range from 8-80  $\mu\text{m}$
- Spectrometric scatter and absorption measurements in the wavelength range from 375 - 700 nm
- Supplied with 3 packs of 25 glass sample carriers (75 in total) and a pack of 12 sensor cleaners - for FREE (worth over £150!)

**FREE**  
Accessories  
worth  
£150

**NEW**



| Code           | Supplied with  | List Price £ |
|----------------|--|--------------|
| <b>F151692</b> | Anvajo fluidlab R-300 with 3 Packs of Acella 100 $\mu\text{m}$ Sample Carriers and 1 Pack of Sensor Cleaners | 3630.00      |
| <b>F151693</b> | Anvajo fluidlab R-300 with 3 Packs of Acella 50 $\mu\text{m}$ Sample Carriers and 1 Pack of Sensor Cleaners  | 3630.00      |
| <b>F151694</b> | Anvajo fluidlab R-300 with 3 Packs of Acella 20 $\mu\text{m}$ Sample Carriers and 1 Pack of Sensor Cleaners  | 3630.00      |



## Blue-Ray Biotech EzScope 101 Live Cell Imaging System

1+  
YEAR NEW

BLUE-RAY  
BIOTECH

- Incubator Live View - Designed to be used inside the incubator, without the need to remove your cells from incubator to enhance culture quality control
- Minimises Experimental Variations - Up to four units of EzScope can be setup in the same incubator and controlled by one computer
- Exceptional Image Quality - Adopts high contrast brightfield optical configurations, coupled with precise motorised focusing, and two interchangeable magnifying objective lenses
- Easy Image Editor - Captures and edits images easily with EzCapture software
- Comes supplied with 10x objective lens. 20x lens, optional mechanical XY stage and adapters for slides and flasks available separately



| Code    | Operating Conditions                  | Dims, w x d x h, mm | Weight, kg | List Price £ |
|---------|---------------------------------------|---------------------|------------|--------------|
| COU2050 | 0 to 42°C, 5 to 95% RH non-condensing | 225 x 231 x 205     | 2          | 4193.00      |

## Blue-Ray Biotech Gradient TurboCycler 2 with 96-Well Sample Block

2+  
YEARS NEW

BLUE-RAY  
BIOTECH

- Flexible ramp rate control from 0.1 to 5.5°C/s
- Fully adjustable lid temperature can be set between 35 and 120°C
- Gradient optimisation range from 1 to 30°C
- Sensitive 7" capacitive touchscreen enables easy operation even with laboratory gloves
- WiFi function allows monitoring of your PCR status remotely anytime on your mobile device via the free TurboApp
- Compatible with regular profile or low profile 0.2mL PCR tube, strip, non-skirted, semi-skirted and full-skirted 96-well plate



| Code    | Dims, w x d x h, mm | List Price £ |
|---------|---------------------|--------------|
| MOL2702 | 245 x 415 x 225     | 3137.00      |

## Blue-Ray Biotech TurboQ Real-Time PCR Machine with Laptop



Fixed 96-well, 4-channel optics enable multiplex detection up to 4 targets per well. CCD base detection system for fast and uniform detection. Laptop included.

- 4 Optical Channels: Detects up to 4 targets in one well
- CCD-Based Detection System: The entire plate can be detected at once to eliminate reaction-time differences
- Motorised Plate Carrier Tray: Plate in/out with a simple click, enables automation integration in the future
- $\pm 0.25^{\circ}\text{C}$  Block Temperature Control Accuracy: Ensures experiment condition stability and eliminates uncertainty
- Software with Complete Analysis Functions: No need to purchase extra analysis modules
- Sample block: Fixed 96-well, compatible with regular profile 0.2 ml PCR tube, strip, non-skirted and semi-skirted 96-well plate



| Code           | Dims, w x d x h, mm | List Price £    |
|----------------|---------------------|-----------------|
| <b>MOL2700</b> | 354 x 455 x 567     | <b>24995.00</b> |

## Labogene Mars Class II Cabinets



The Mars safety cabinets take full advantage of the latest innovative energy-efficient fans and optimised air flows, contributing to lower energy consumption and reduction of the noise level.

Lower energy consumption also results in less heat transmission, both into the work chamber and to the laboratory environment, contributing significantly to reduced overall energy costs.



- Dual filter class II microbiological safety cabinets
- New innovative EC fans and optimised air flow, contributing up to a 6 dB(A) reduction in the noise level
- 110 mm HEPA filters with efficiency at 99,999 % against  $0.3\mu\text{m}$  particles, ensuring a clean sterile work chamber environment
- Panoramic front & side windows for ultimate supervision and glare-free lighting
- Manufactured & tested in compliance with EN 12469
- Supplied with UV Light - LED Light - Double HEPA Filter, Support Stand and Pair of Electrical Sockets



| Code           | Alt Ref   | Width, mm | List Price £   |
|----------------|-----------|-----------|----------------|
| <b>CAB1032</b> | MARS 900  | 900       | <b>6875.00</b> |
| <b>CAB1034</b> | MARS 1200 | 1200      | <b>7201.00</b> |
| <b>CAB1036</b> | MARS 1500 | 1500      | <b>8140.00</b> |
| <b>CAB1038</b> | MARS 1800 | 1800      | <b>8770.00</b> |

## Labogene CoolSafe 4L Freeze Dryer Bundles

### CoolSafe Pro

- Digital display of the condenser temperature and pressure
- 4-litre condenser capacity and -110°C temperature

### CoolSafe Touch

- New touchscreen controller with regulation of temperature, pressure and time
- Freeze-drying with programming and storage of protocols for full research and method development
- 4-litre condenser capacity and -110°C temperature

Promotional Bundle complete with acrylic plate, 200mm diameter polycarbonate chamber with 2 unheated stainless steel shelves and 30L/min Vacuum pump RZ 2.5 - Save £1,227!

Promotional Bundle complete with 300mm diameter acrylic chamber with 5 x heated shelves, 5 x stainless steel trays and 30L/min Vacuum pump RZ 2.5 - Save £5,349!

Save up to  
**£5,349**



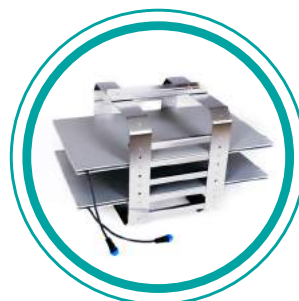
| Code           | Description                                       | List Price £ | Offer Price £   |
|----------------|---|--------------|-----------------|
| <b>F151699</b> | CoolSafe Pro 110-4 Freeze Dryer Complete Bundle   | 9512.00      | <b>8285.00</b>  |
| <b>F151703</b> | CoolSafe Touch 110-4 Freeze Dryer Complete Bundle | 16859.00     | <b>11510.00</b> |

## Labogene CoolSafe Superior Touch 95-80 Freeze Dryer Bundle

- Touchscreen controller and display of temperature, pressure and time during operation
- Large capacity, seamless stainless steel condenser with external cooling coils and electric de-icing as standard
- Front-loading for ease of access, loading and supervision
- Fully automatic control of pre-freeze in 5 steps - and primary and secondary drying in 10 steps. Controlling shelf temperature from -80°C to + 50°C for correct ice crystal formation and freeze drying
- Condenser ice capacity of max. 10kg/24 hours
- The chamber can accommodate from 2 to 8 electrically heated shelves with trays, giving a total area ranging from 0.3m<sup>2</sup> to 1.2m<sup>2</sup>

Promotional Bundle complete with bulk rack including 2 x heated shelves and 105 L/min Vacuum pump RZ 6

Save over  
**35%**



| Code           | List Price £ | Offer Price £   |
|----------------|--------------|-----------------|
| <b>F151707</b> | 47438.00     | <b>29682.00</b> |

SCIENTIFIC LABORATORY SUPPLIES PRESENTS

# FOCUS

EXCLUSIVE OFFERS & EXCITING NEW PRODUCTS

BioDrop Resolution software is pre-programmed for DNA, RNA, oligo, fluorescent dye labelling efficiency,  $T_m$  calculation, quick measurements and colourimetric protein methods

See page 38...

20%  
OFF



Scientific Laboratory Supplies  
Wilford Industrial Estate  
Ruddington Lane  
Nottingham, NG11 7EP  
United Kingdom

t. (Eng & Wales) 0115 982 1111  
t. (Scotland) 01236 431 857

[www.scientificlabs.co.uk](http://www.scientificlabs.co.uk)

## **BioDrop+ Microvolume UV/Vis Spectrophotometers**

Comes with intuitive and easy to use software and a USB port for PC control and data export

SPRING EDITION

2021