

# FOCUS

2021

EXCLUSIVE OFFERS & EXCITING NEW PRODUCTS

See page 49...

**NEW**

## GREAT NEW OFFERS INSIDE:

**SLS Select Deep Well  
Storage Plates**  
(See page 16)

**Anvajo Fluidlab R-300 Cell  
Counter/Spectrometer**  
(See page 48)

**Blue-Ray Biotech  
Gradient TurboCycler 2  
(With 96-Well Sample Block)**  
Flexible rate control, adjustable  
lid temperature, easy operation  
with touchscreen



### Eppendorf 5810/5810R Centrifuge Packages

The smallest 3L centrifuge on the market with plenty of smart features



See page 5...

**25%  
OFF**

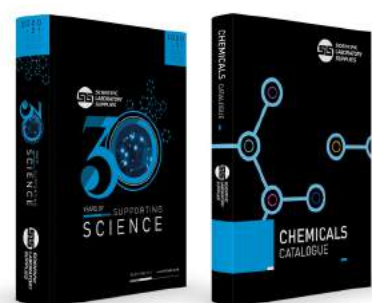
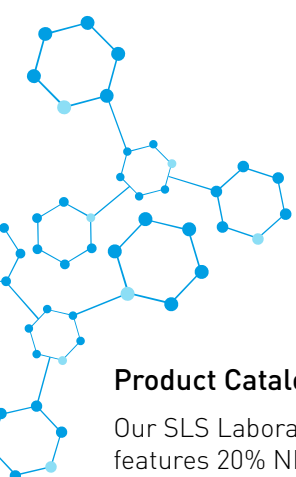
# WELCOME

## FOCUS Spring 2021 Edition

Welcome to another bumper issue of FOCUS! With great exclusive offers on products from market leading brands such as Eppendorf, Corning, Gilson, Lonza and Ohaus plus many more. You will also find some great prices on our own SLS branded ranges.

Throughout this edition you will find products suitable for the disinfection and control of COVID-19, helping you to make your working environment safer.

**REMEMBER:**  
These offers are **EXCLUSIVE** to SLS and valid until 31<sup>st</sup> May 2021



### Product Catalogues - Available now!

Our SLS Laboratory Product Catalogue (2020/21) features 20% NEW products and our Chemicals Catalogue includes products from leading brands including Honeywell Fluka™, Honeywell Riedel-de Haën, Hydranal™, Chromasolv™, Reagecon and our own brand SLS Select chemicals.

Whatever your application you're sure to find the product to suit your needs.

### KEY to product symbols:

- Length of warranty
- New product
- Made in Britain
- Sustainability



## KEY Highlights



Eppendorf MiniSpin® and MiniSpin® Plus Microcentrifuges  
See page 03



Gilson PIPETMAN® Classic Manual Pipettes  
See page 08



Lonza Cell Culture Media and Buffers  
See page 11



Axygen® Axyspin Plate Spinner  
See page 20



Mettler Toledo SevenCompact™ S210 pH Meter Bundles  
See page 28



Liebherr LGv5010 Mediline Freezer  
See page 43

## Eppendorf MiniSpin® and MiniSpin® Plus Microcentrifuges



eppendorf

- Extremely compact footprint
- Acceleration and deceleration time <13 s
- User-friendly digital display for time and speed
- Separate short-spin key for fast and comfortable centrifugation
- Soft-touch lid closure for ergonomic lid locking
- Large LCD display
- Includes F-45-12-11 rotor which has a capacity of 12 x 1.5/2.0mL tubes
- MiniSpin® plus provides automatic rpm/rcf conversion, and extended timer to 99 min or continuous centrifugation



25% OFF

Code	Description	Max Speed, RPM	Max Speed, x g	Timer	List Price £	Offer Price £
F151377	MiniSpin®	800 – 13400	12100	15s–30min	838.00	629.00
F151378	MiniSpin® Plus	800 – 14500	14100	15s–99min	1088.00	816.00



### Reusable Nanotech Face Masks



Premium and reusable, made from nanotech coated 3-layered 100% cotton. Washable up to 100 times to make them cost effective and environmentally friendly.

Code	Size	List Price £
COV1016	Large	4.10
COV1018	Medium	4.10

Eppendorf 5425R Centrifuges



eppendorf

The new Centrifuge 5425R is the successor to the popular Centrifuge 5424R.

- Excellent cooling system for the separation of temperature-sensitive samples from 0.2 – 5 mL
- Aerosol-tight Eppendorf QuickLock® rotor lids for an ergonomic lid locking
- Additional software functions [e.g. short function without keeping the key pressed, end-of-run countdown]
- Extended rotor program [e.g. 5.0mL rotor, swing-bucket rotor for divisible plates to speed up your PCR/qPCR setup]
- OptiBowl® design for quiet operation, even without rotor lid
- Ergonomic closing of the centrifuge lid with only one finger
- Max. rotor capacity: 24 x 2.0mL / 10 x 5.0mL vessels
- Max. speed: 21,300 x g (15,060 rpm)
- FastTemp function: from ~21°C to 4°C in only 8 minutes
- Temperature range: -10°C to +40°C
- The patented compressor technology reduces vibrations and protects your samples
- Continuous cooling maintains a constant temperature after the run has been completed – your samples stay cool



See website for rotor options

Code	Description	List Price £
E5406000160	Eppendorf 5425R with FA-24x2 Rotor, Keypad Control	4325.00
E5406000569	Eppendorf 5425R with FA-24x2 Rotor, Knob Control	4325.00



Bollé DFS2 Face Screen

DFS2 is a facial screen accessible to all which perfectly protects against splashes and droplets. One size fits all.

Code	Pack	List Price £
SAF1096	Each	3.00

Eppendorf 5810/5810R Centrifuge Packages



eppendorf

- Smallest 3L centrifuge on the market
- Low lid opening height for use under shelves
- Quiet to benefit your work environment
- High centrifugation speed of up to 4,500 x g (swing-bucket rotor) or 20,913 x g (fixed-angle)
- Timer 1min to 99min, with continuous run function, short-spin
- Low access height for easy loading/unloading
- Centrifuge lid with soft-touch lid closure
- Temperature range from -9°C to 40°C for R models
- Available with adapters for 13mm and 16mm round-bottom blood/urine collection tubes or standard 15mL and 50mL Falcon® tubes
- Featuring swing-bucket rotors for high capacity [S-4-104] 56x15mL, 28x50mL or 92x13mL, 80x16mL; medium capacity [A-4-62] 36x15mL, 16x50mL; or economical capacity [A-4-81] 48x15mL, 20x50mL



Code	Model	Supplied with	List Price £	Offer Price £
F151379	5810R	S-4-104 Rotor, Adapters for 15mL/50mL Conical Tubes	9152.00	6864.00
F151380	5810R	S-4-104 Rotor, Adapters for 13mL/16mL Round-Bottom Tubes	9152.00	6864.00
F151381	5810R	A-4-81 Rotor, Adapters for 15mL/50mL Conical Tubes	8717.00	6538.00
F151382	5810R	A-4-62 Rotor, Adapters for 15mL/50mL Conical Tubes	8031.00	6023.00
F151383	5810	A-4-62 Rotor, Adapters for 15mL/50mL Conical Tubes	5514.00	4136.00
F151384	5810	A-4-81 Rotor, Adapters for 15mL/50mL Conical Tubes	6200.00	4650.00
F151385	5810	S-4-104 Rotor, Adapters for 13mL/16mL Round-Bottom Tubes	6639.00	4979.00
F151386	5810	S-4-104 Rotor, Adapters for 15mL/50mL Conical Tubes	6639.00	4979.00



Eppendorf Combitips Advanced

eppendorf

Offering a unique volume range of 1µL-10mL and is the only mechanical dispenser that dispenses the aspirated liquid up to 100 times without refilling the tip.

- Repetitive dispensing of volumes in long series
- Contamination-free dispensing of hazardous liquids
- Precise and accurate dispensing of viscous solutions e.g glycerol, or liquids with high vapour pressure e.g ethanol
- Purchase 7 packs of Combitips Advanced from the list below at your normal price to receive a FREE Multipipette M4 (Multipipette and Combitips shipped separately)



Combitips are supplied in packs of 100

Combitips Advanced - Eppendorf Quality

High precision and accuracy guaranteed by precise moulding and testing.

Code	Colour	Volume, mL	List Price £
F151387	White	0.1	82.00
F151388	Light blue	0.2	82.00
F151389	Purple	0.5	82.00
F151390	Yellow	1.0	82.00
F151391	Green	2.5	82.00
F151392	Blue	5.0	82.00
F151393	Orange	10.0	82.00
F151394	Red	25.0	97.00
F151395	Light grey	50.0	106.00

Combitips Advanced - PCR Clean

Certified free of DNases, RNases, nucleic acids and PCR inhibitors

Code	Colour	Volume, mL	List Price £
F151396	White	0.1	103.00
F151397	Light blue	0.2	103.00
F151398	Purple	0.5	103.00
F151399	Yellow	1.0	103.00
F151400	Green	2.5	103.00
F151401	Blue	5.0	103.00
F151402	Orange	10.0	103.00
F151403	Red	25.0	119.00
F151404	Light grey	50.0	132.00

Combitips Advanced - Biopur

Guaranteed to be sterile and free of pyrogens, RNases, DNases, DNA and ATP as well as PCR inhibitors. Individually Wrapped.

Code	Colour	Volume, mL	List Price £
F151405	White	0.1	150.00
F151406	Light blue	0.2	150.00
F151407	Purple	0.5	150.00
F151408	Yellow	1.0	150.00
F151409	Green	2.5	150.00
F151410	Blue	5.0	150.00
F151411	Orange	10.0	150.00
F151412	Red	25.0	176.00
F151413	Light grey	50.0	190.00

**FREE**  
Eppendorf Multipipette  
M4 when you buy  
7 packs of Combitips  
Advanced  
(Worth £321)



Raise the Limits

Eppendorf Research® plus

Eppendorf sets standards in ergonomics! This ultralight pipette meets the highest needs in precision and accuracy – combined with ultimate ergonomics and increased flexibility. A spring-loaded tip cone, a secondary adjustment option, an improved volume display – and all that in an ultra light, fully autoclavable pipette.

- > Ideal ergonomics: Eppendorf PhysioCare Concept®
- > Ultra light with minimal pipetting and ejection forces
- > Spring-loaded tip cone
- > Available as single-channel pipette with fixed and variable volume as well as 8-,12-, 16- and 24-channel pipette



www.scientificlabs.co.uk

Eppendorf®, the Eppendorf Brand Design, PhysioCare Concept® and Eppendorf Research® are registered trademarks of Eppendorf AG, Germany. U.S. Design Patents are listed on www.eppendorf.com/ip. All rights reserved, including graphics and images. Copyright © 2019 by Eppendorf AG. \*The Research plus pipette is an in vitro diagnostic device according to Directive 98/79/EC of the European Parliament and the Council dated October 27, 1998.

Gilson PIPETMAN® Classic Manual Pipettes



**PIPETMAN® Classic starter kit includes:**

3 PIPETMAN® Classic pipettes: P20, P200, P1000; 2 racks DIAMOND tips: D200, D1000; 3 SINGLE™ pipette hangers; 'Gilson Guide to Pipetting' handbook

**PIPETMAN® Classic microvolume kit includes:**

3 PIPETMAN® Classic pipettes: P2, P10, P100; 2 racks DIAMOND tips: DL10, D200; 3 SINGLE™ pipette hangers; 'Gilson Guide to Pipetting' handbook

**PIPETMAN® Classic large volume kit includes:**

2 PIPETMAN® Classic pipettes: P5000, P10mL; 2 bags of ten filters; 2 safety bags

**PIPETMAN® Classic four pipette kit includes:**

4 PIPETMAN® Classic pipettes: P2, P20, P200, P1000; 2 racks DIAMOND tips: D10L, D200, D1000; 4 SINGLE™ pipette holders; 4 PIPETMAN® comfort handles; 'Gilson Guide to Pipetting' handbook



Code	Description	Volume Range, µL	List Price £	Offer Price £
F151074	P2	0.2-2	209.00	125.00
F151075	P10	1-10	209.00	125.00
F151076	P20	2-20	209.00	125.00
F151077	P100	20-100	209.00	125.00
F151078	P200	5-200	209.00	125.00
F151079	P1000	200-1000	209.00	125.00
F151080	P5000	1000-5000	209.00	125.00
F151081	P10mL	1000-10000	209.00	125.00
F151082	Starter Kit	-	567.00	340.00
F151083	Large Volume Kit	-	378.00	227.00
F151084	Micro Volume Kit	-	567.00	340.00
F151085	Classic 4 Pipette Kit	-	735.00	441.00

SLS Lab Basics Pipettes



Single Channel:

- Ergonomic design ensuring light weight & soft plunger movement
- Click-stop system for volume selection
- Colour coded for easy identification
- Calibration conforms to EN-ISO 8655 with report enclosed with every pipette

Multi Channel:

- Manifold is easily removable, fully autoclavable and can rotate 360° for easy right or left hand operation
- Smooth and light tip loading and ejection
- Leak free sealing of tips



Code	Channel	Volume Range, µL	List Price £	Offer Price £
F151300	Single	0.1-2.5	115.00	48.00
F151301	Single	0.5-10	115.00	48.00
F151305	Single	2-20	115.00	48.00
F151302	Single	5-50	115.00	48.00
F151303	Single	10-100	115.00	48.00
F151306	Single	20-200	115.00	48.00
F151304	Single	100-1000	115.00	48.00
F151307	Single	500-5000	138.00	52.00
F151308	Single	1000-10000	138.00	52.00
F151313	8	0.5-10	520.00	165.00
F151309	8	5-50	520.00	165.00
F151310	8	10-100	520.00	165.00
F151311	8	20-200	520.00	165.00
F151312	8	30-300	520.00	165.00
F151318	12	0.5-10	570.00	200.00
F151314	12	5-50	570.00	200.00
F151315	12	10-100	570.00	200.00
F151316	12	20-200	570.00	200.00
F151317	12	30-300	570.00	200.00

Axygen® Axypet® Pro Starter Kit



Axygen® Axypet® Pro Pipettors have been engineered to provide the highest levels of ergonomics, accuracy, and precision.

Starter Kit contains 4 variable volume pipettors in the most popular and universal volumes (0.5-10µL, 2-20µL, 20-200µL, and 100-1000µL), red pipette stand for 4 pipettors, and 3 racks with tips (10µL, 200µL and 1000µL).

- Ergonomic handle design for perfect fit for both right and left hand
- Convenient one-hand volume setting with auto-lock system prevents accidental volume change during work
- 4-digit counter for greater precision, perfectly positioned for visibility at all times
- Single-channel pipettors are compatible with very narrow tubes
- Fully autoclavable and UV-resistant for sample protection against contaminations



Code	Description	List Price £	Offer Price £
F151063	Axypet Pro Starter Kit	742.04	370.00



Dentigel Alcohol Gel Pump 500mL

Code	List Price £
COV1210	4.90

SLS Lab Pro Pipettes



The SLS Lab Pro pipettes offer superior quality at an affordable price. These are lightweight pipettes with a handle that fits naturally in the hand. They feature a volume locking system for safe, secure pipetting. A lubricated piston assembly offers very light pipetting forces.

- Adjustable tip ejector button to adapt to both right and left-handed users
- Clip mechanism allows easy and safe removal of tip ejector



50% OFF

Code	Channel	Volume Range, µL	List Price £	Offer Price £
F151284	Single	0.2-2	210.00	105.00
F151285	Single	1-10	210.00	105.00
F151286	Single	2-20	210.00	105.00
F151287	Single	10-100	210.00	105.00
F151288	Single	20-200	210.00	105.00
F151289	Single	100-1000	210.00	105.00
F151290	Single	500-5000	240.00	120.00
F151291	Single	1000-10000	240.00	120.00
F151292	8	0.5-10	495.00	235.00
F151293	8	2-20	495.00	235.00
F151294	8	20-200	495.00	235.00
F151295	8	20-300	495.00	235.00
F151296	12	0.5-10	565.00	285.00
F151297	12	2-20	565.00	285.00
F151298	12	20-200	565.00	285.00
F151299	12	20-300	565.00	285.00

SLS Lab Pro Pipette Tip Reload Towers



A low cost, environmentally friendly alternative to racked tips. The system allows the user to reload empty racks with new tips in a single movement. The transfer card is designed to prevent contamination by minimising the amount of handling.

- Reload up to 10 trays in 90 seconds
- Requires 57% less storage space than full racks
- Reuse existing racks
- Generates 90% less packaging waste

Up to 50% OFF



Code	Volume, µL	Pack	List Price £	Offer Price £
F151319	10XL	10 x 96	31.90	16.80
F151320	10	10 x 96	33.40	16.80
F151321	200	10 x 96	32.80	16.80
F151322	300	10 x 96	35.70	16.80
F151323	1000	10 x 96	35.60	22.80
F151324	1250	10 x 96	38.70	22.80

Lonza Cell Culture Media and Buffers

A high quality range of media, buffer solutions and supplements for a wide variety of cell culture applications. Suitable for high density suspensions, monolayers and adherent dependent cells including human, monkey, hamster, rat, mouse, chicken and fish lines as well as hybridoma cells and blood cells.



Lonza

Up to 74% OFF

Code	Description	Pack	List Price £	Offer Price £
F151269	DMEM 4.5g/L Glucose with L-Glutamine	500mL	7.00	3.28
F151270	DMEM 4.5g/L Glucose without L-Glutamine	500mL	7.10	3.06
F151271	DMEM Low Glucose with 1g/L Glucose without L-Glutamine	500mL	11.60	3.06
F151272	DMEM:F12 with 25mM HEPES 1:1 Mixture with 3.151g/L Glucose with L-Glutamine	500mL	9.30	3.57
F151273	RPMI 1640 Medium without L-Glutamine	500mL	7.60	3.06
F151274	RPMI 1640 Medium with L-Glutamine	500mL	7.30	3.13
F151275	Ham's F12 Medium with L-Glutamine	500mL	12.40	6.60
F151276	Hanks' BSS (1X) without Phenol Red, Calcium or Magnesium	500mL	11.30	5.78
F151277	DPBS (1X) with Calcium and Magnesium	500mL	9.90	4.42
F151278	PBS (1X) without Calcium and Magnesium	500mL	6.90	3.06
F151279	Trypsin-EDTA (1X) includes 170,000 U/L Trypsin 1:250 and 0.2g/L Versene® (EDTA)	100mL	14.10	5.51
F151280	Trypsin-EDTA (10X) includes 1,700,000 UL Trypsin 1:250 and 2g/L Versene® (EDTA)	100mL	19.50	5.79
F151281	10,000 U/mL Potassium Penicillin and 10,000µg /mL Streptomycin Sulfate	100mL	11.40	7.94
F151282	5,000 U/mL Potassium Penicillin and 5,000µg/mL Streptomycin Sulfate	100mL	12.10	7.07



Code	Description	Pack	List Price £	Offer Price £
F151668	Buffer Solution pH 4 Colour Coded (Red)	1L	27.00	18.90
F151669	Buffer Solution pH 4 Colour Coded (Red)	2.5L	48.00	33.60
F151670	Buffer Solution pH 4 Colour Coded (Red)	5L	40.00	28.00
F151671	Buffer Solution pH 7 Colour Coded (Yellow)	1L	27.00	18.90
F151672	Buffer Solution pH 7 Colour Coded (Yellow)	2.5L	31.00	21.70
F151673	Buffer Solution pH 7 Colour Coded (Yellow)	5L	46.00	32.20
F151674	Buffer Solution pH 10 Colour Coded (Blue)	1L	27.00	18.90
F151675	Buffer Solution pH 10 Colour Coded (Blue)	2.5L	48.00	33.60
F151676	Buffer Solution pH 10 Colour Coded (Blue)	5L	49.00	34.30
F151677	pH Electrode Storage Solution	500mL	31.00	21.70
F151678	Potassium Chloride 4M (pH Electrode Filling Soln)	100mL	27.00	18.90

### Conductivity Standards

Code	Description	Pack	List Price £	Offer Price £
F151679	Conductivity Standard 10µS (at 25°C)	500mL	21.00	14.70
F151680	Conductivity Standard 84µS (at 25°C)	500mL	21.00	14.70
F151681	Conductivity Standard 147µS (at 25°C)	500mL	21.00	14.70
F151682	Conductivity Standard 1000µS (at 25°C)	500mL	21.00	14.70
F151683	Conductivity Standard 1413µS (at 25°C)	500mL	21.00	14.70
F151684	Conductivity Standard 2000µS (at 25°C)	500mL	21.00	14.70
F151685	Conductivity Standard 12880µS (at 25°C)	500mL	21.00	14.70

### Laboratory Water

Code	Description	Pack	List Price £	Offer Price £
F151686	Water Analytical Reagent (A.R.)	5L	24.00	16.80
F151687	Water Analytical Reagent (A.R.)	10L	35.00	24.50
F151688	Water Analytical Reagent (A.R.)	25L	39.00	27.30
F151689	Water Deionized	2.5L	10.00	7.00
F151690	Water Deionized	5L	15.00	10.50
F151691	Water Deionized	25L	35.00	24.50

NEW  
for 2021

SIGMA-ALDRICH  
is now part of  
**MERCK**

**Honeywell**



**Reagecon**  
Delivering the Correct Result

**SPEX CertiPrep Ltd.**

SLS is now the official Distributor Partner for the entire Sigma-Aldrich® range from Merck, with access to over 300,000 Sigma-Aldrich and Supelco products. With a wide portfolio and next day shipping on the majority of products our comprehensive range provides a solution to most applications

SLS provides the full portfolio of Honeywell brands including Burdick & Jackson™, Riedel-de Haën™ and Fluka™. This includes a broad range of solvents and essential reagents for analytical and chemistry laboratories including Hydralan™, Chromasolv™ and many other high-quality premium chemical products.

SLS Select is our own range of chemicals, manufactured in the UK and designed to meet the needs of the most demanding of laboratories. We provide a high quality, cost effective solution to most routine applications.

One of the largest producers of Physical/Chemical Standards and Certified Reference Materials worldwide. Certified to ISO9001, ISO17025, ISO17034, ISO18001 with the majority of products also traceable to International bodies such as NIST & OIML.

Manufacturer of Certified Reference Materials (CRMs) and Calibration Standards offering a full range of Inorganic and Organic CRMs. Certified to ISO 9001:2015, ISO/IEC 17025:2017 and ISO 17034:2016.

## SLS Select Biocleanse Disinfectant

NEW

Low-residue, alcohol-free SLS Select Biocleanse disinfectant offers a convenient, effective, powerful all-in-one cleaning and disinfecting solution for a broad range of surfaces, including PMMA and aluminium.

- Wide spectrum microbicide
- Cleans and disinfects in a single wipe
- pH neutral
- Alcohol-free
- Effective against all enveloped viruses e.g. HIV, HBV, HCV, coronaviruses
- Wipe size: 200 x 190mm
- 200 wipes per tub

40%  
OFF



Code	Description	Pack	List Price £	Offer Price £
F151360	Disinfectant Wipe Tub	6	75.00	45.00

## AZLON® WASH BOTTLES

FOR SAFE AND EASY SOLVENT AND LIQUID DISPENSING



Find out more at  
[scientificlabs.co.uk](http://scientificlabs.co.uk)

**DWK LIFE SCIENCES**  
DURAN WHEATON KIMBLE



### Azlon® Multi-Lingual Safety Vented Wash Bottles

Supplied in packs of 5

Code	Label	Cap Colour	Volume, mL	List Price £	Offer Price £
F151170	Acetone	Red	500	26.97	17.53
F151171	Methanol	Green	500	26.97	17.53
F151172	Isopropanol	Blue	500	26.97	17.53
F151173	I.M.S	Yellow	500	26.97	17.53
F151174	Ethanol	Orange	500	26.97	17.53

35% OFF

## DURAN® Protect Glass Laboratory Bottles

- The plastic coating provides scratch, leak and splinter protection
- Standard GL45-thread
- Easy-to-read scale with graduation marks to estimate the content
- Fired-on, highly durable white ceramic print
- PBT caps and EFTE pouring rings are fully autoclavable at 121 or 134°C and offer greater thermal and chemical resistance than the equivalent polypropylene components

**Note:** Caps and pouring rings not included with bottles and must be purchased separately. Bottles, caps and pouring rings supplied in packs of 10.

Code	Description	List Price £	Offer Price £
F151163	DURAN® Protect Laboratory Bottles 100mL	123.60	80.00
F151164	DURAN® Protect Laboratory Bottles 250mL	135.70	88.00
F151165	DURAN® Protect Laboratory Bottles 500mL	164.00	107.00
F151166	DURAN® Protect Laboratory Bottles 1000mL	230.80	150.00
F151167	DURAN® Protect Laboratory Bottles 2000mL	455.00	296.00
F151168	DURAN® Red PBT 54mm Screw-Caps with PTFE Protected Seal	54.60	35.50
F151169	DURAN® Red ETFE Pouring Rings	11.70	7.61

## SLS Select Media Bottles

A

- Perfect for everyday laboratory use
- Suitable for many applications, such as storage of culture media
- Made from high quality borosilicate glass 3.3 to ISO 3585
- Heat and chemical resistance
- GL45 blue polypropylene cap and pouring ring included
- White graduations and marking spot
- Sloped shoulders for easy pour
- Standards to ISO 4796-1



50% OFF

Code	Volume, L	Pack	List Price £	Offer Price £
F151342	0.1	10	28.80	14.40
F151343	0.25	10	32.80	16.40
F151344	0.5	10	33.70	16.90
F151345	1	10	55.00	27.50
F151346	2	10	119.00	60.00
F151347	5	Each	113.00	57.00
F151348	10	Each	183.00	92.00
F151349	20	Each	286.00	143.00



## Corning® Sterile Molecular Biology Grade Water

Suitable for a wide variety of routine tasks requiring a high degree of sterility.

Supplied in packs of 6.

Code	Volume, mL	List Price £	Offer Price £
F151055	100	55.65	24.00
F151056	500	98.00	40.00
F151057	1000	140.03	54.00

UP TO 60% OFF



SLS Select Deep Well Storage Plates



SLS Select deep well storage plates are high performance plates produced in cleanrooms that are certified for medical device assembly. They are manufactured in pure virgin medical grade polypropylene (PP) with class leading low levels of extractable elements.

- ANSI-SBS Footprint
- Tested for low extractables
- Alpha-Numeric reference grid
- Suitable for automated or manual applications
- For use in sample storage at 86°C to DNA denaturation at 100°C
- Autoclavable
- No inner edges to allow better collection of magnetic beads
- Manufactured under DNase/RNase free environment
- Coloured versions available

50% OFF



Round Well

Code	No. of Wells	Well Volume, mL	Bottom	Colour	Pack	List Price £	Offer Price £
SLS1206	96	1	U	Natural	50	199.85	100.00
SLS1208	96	1	U	Black	50	185.00	93.00
SLS1230	96	1	U	Black	50	199.85	100.00
SLS1240	96	1.2	U	Natural	50	207.35	104.00
SLS1242	96	1.2	U	Natural	50	207.35	104.00

Square Well

Code	No. of Wells	Well Volume, mL	Bottom	Colour	Pack	List Price £	Offer Price £
SLS1246	96	2	V	Natural	50	169.95	85.00
SLS1248	96	2	V	Black	50	186.65	93.00
SLS1278	96	2.2	V	Natural	50	169.95	85.00
SLS1280	96	2.2	U	Natural	50	276.60	138.00
SLS1282	384	0.3	V	Natural	48	707.75	354.00

Sealing Mats

Code	Description	Pack	List Price £	Offer Price £
SLS1284	96 square well silicone sealing mat	50	396.60	198.00
SLS1286	96 square well silicone sealing mat, can be punctured	50	396.60	198.00
SLS1288	96 round well silicone sealing mat for 1.0mL plates, can be punctured	50	396.60	198.00
SLS1290	96 round well silicone sealing mat for 2.0mL plates, can be punctured	50	396.60	198.00
SLS1294	96 square well silicone sealing mat, cross cut	50	396.60	198.00
SLS1296	96 round well silicone sealing mat for 2.0mL plates, cross cut	50	396.60	198.00
SLS1298	384 square well silicone sealing mat	50	396.60	198.00

SLS Select Serological Pipettes



- Manufactured in compliance with the current versions of the ISO 13485 and FDA CFR 21 Part 820, cGMP
- Made from USP Class VI polystyrene resin
- Crisp, dark ascending and descending as well as negative graduations
- Colour-coded rings for easy identification
- Plugged
- Non-pyrogenic
- RNase-/DNase-free
- Sterile



Up to 58% OFF

Code	Volume, mL	Packaging	Inner Pack	Pack	List Price £	Offer Price £
F151325	1	Individually Wrapped	100	1000	143.00	60.00
F151326	1	Bulk	25	1000	118.00	50.00
F151327	2	Individually Wrapped	100	1000	157.00	66.00
F151328	2	Bulk	25	1000	118.00	50.00
F151329	5	Bulk	25	500	112.00	46.80
F151330	5	Individually Wrapped	50	200	43.00	18.20
F151331	10	Individually Wrapped	50	200	45.00	19.00
F151332	10	Bulk	25	500	137.00	57.50
F151333	25	Bulk	20	100	146.00	68.00
F151334	25	Individually Wrapped	50	200	103.00	43.40
F151335	50	Individually Wrapped	20	100	126.00	53.00



SLS Select Cylinders, Polypropylene with Moulded Graduations

Supplied in packs of 10

Code	Capacity, mL	List Price £
CYL20840	50	12.00
CYL20880	250	27.00
CYL20920	1000	70.00

SLS Lab Basics Pipette Filler



- Long life Li-Ion battery that allows 20 hours of continuous usage, and low battery indicator
- For 1-100mL glass or plastic pipettes
- Uses standard 0.45µm hydrophobic filters
- Complete with universal voltage and plug faced charger
- Supplied with bench stand, magnetic/fixable wall mount and 5 coloured nose cones

50% OFF



Code	Description	List Price £	Offer Price £
F151350	Pipette Filler	200.00	100.00



Corning® Stripettor™ Ultra Pipette Controller

48% OFF

Code	Description	List Price £	Offer Price £
F151058	Stripettor™ Ultra Pipette Controller	268.53	140.00

Biocleanse Ultra Ready-To-Use Wide Spectrum Microbiocide Spray

Biocleanse Ultra Ready-to-Use Spray is a low residue, alcohol-free, solution for effective one-stage cleaning and disinfection of a broad range of surfaces including PMMA and aluminium.

Code	Pack	List Price £
COV1104	20 x 500mL	106.00

Whilst Stocks Last



Thermo Scientific™ Digital Mini Rotators



- Speed range: 50-500 rpm
- Precise speed control:
  - ±1 rpm (≤100 rpm)
  - ±1% (101-450 rpm)
- Orbit Diameter: 10mm
- Max Load up to 4.5kg
- 2 Timer modes:
  - Continuous, Timer

15% OFF



Code	Description	Platform Dims, mm	Overall Dims, w x d x h, mm	List Price £	Offer Price £
F151054	Digital Mini Rotator	310 x 284	284 x 383 x 130	1087.00	924.00

Thermo Scientific™ Digital Waving Rotator



- Digital display of speed and time
- Speed range: 5 – 120rpm
- Easy adjustable rocking angle: 1-12°
- Precise speed control:
  - ±1 rpm≤30 rpm
  - ±2 rpm>30 rpm
- Max load up to 9.8kg
- Tray size fits 6 x well-plates
- Timer range:
  - 1min to 99hrs 59min

15% OFF



Code	Description	Platform Dims, mm	Overall Dims, w x d x h, mm	List Price £	Offer Price £
F151374	Digital Waving Rotator	276 x 316 x 19	295 x 383 x 224	1076.00	915.00



Axygen® Axyspin Plate Spinner



The first centrifuge designed specifically for quick and easy centrifugation of samples in PCR plates or microplates. Two standard microplates are loaded through a slot in the top of the unit, and sealed plates are loaded vertically. Surface tension keeps samples in place so there is no danger of spilling. Upon closing the lid of the unit, the rotor quickly accelerates the microplates to 2500 rpm. Opening the lid engages the brake and brings the rotor to a stop.

- Capacity for two standard plates
- Top loading design
- Exceptionally small footprint, less than 1/4 the size of most plate centrifuges
- Starts and stops in seconds
- Use before and after thermal cycling to improve PCR yield
- Quickly spin down droplets and condensation
- Accepts skirted and non-skirted and all standard PCR plates
- Speed: 2500 rpm/rcf 500 x g



Code	Description	Dims, w x d x h, mm	List Price £	Offer Price £
F151060	Axyspin Plate Spinner	190 x 210 x 183	561.97	330.00

Corning® LSE™ Platform Rockers



- Low profile and compact size
- 5kg load capacity
- Non-slip rubber pads to prevent sample containers from moving during operation
- Double platform model available for increased capacity
- Timer: 0 to 2 hours or continuous
- Speed: 5 to 120 tilts/minute
- Platform size: 300 x 300mm
- Dims: 325 x 360 x 145mm



Code	Description	List Price £	Offer Price £
F151066	Single Platform	691.70	385.00
F151067	Double Platform	758.38	425.00

Corning® LSE™ Benchtop Incubated Shaker with Platform



Truly a benchtop style, the lid has a low pivot point which provides a space-saving size sure to fit on the lab bench and under shelves. Each unit includes a software package, which provides the option of saving data to an external computer or monitoring RPM and temperature throughout runs. The maximum capacity is 16 x 125mL/ 9 x 250mL/ 5 x 500mL/ 4 x 1000mL.

- Outstanding temperature uniformity
- Large viewing area for undisturbed monitoring of samples
- Broad temperature range
- Multiple shelving options
- Precision control shaking mechanism
- PT100 sensor
- 1min to 99hr timer



Code	Speed Range, RPM	Orbit, mm	Temp Range, °C	Dims, w x d x h, mm	Weight, kg	List Price £	Offer Price £
F151062	20-300	19	Ambient +5°C to 80°C	370 x 530 x 400	20.2	2823.99	1995.00



# SLS Flowgen Incu-Shaker™ Incubated Shaker



A compact shaking incubator with a remarkably small footprint. Accepts several platforms and a variety of flasks, tubes and other common vessels. The standard platform (included) features a non-slip, rubber coated surface, ideal for tissue culture flasks, Petri dishes and staining trays. The convenient MAGic Clamp™ platform is also available for use with Erlenmeyer flasks and test tube racks. The unique, magnetic attachment method is the easiest way to instantly change between flask clamps of different sizes.

- Extremely compact, just 280mm wide
- Touch screen control over time, speed and temperature
- Horizontally circular 19mm orbit for aeration & mixing
- Instantly exchange flask clamps with MAGic Clamp™ accessories
- Program STEP feature for linking consecutive programs

23% OFF



Code	Temp Range, °C	Temp Uniformity/ Accuracy, ±%	Speed Range, RPM	Orbit, mm	Dims, w x d x h, mm	Weight, kg	List Price £	Offer Price £
F151359	Ambient +5-70	0.25/0.1	30-300	19	280 x 480 x 330	11.5	2606.00	2000.00

# 15% discount off a selected list of Corning® CoolCell® products\*



Register your next FBS batch reservation testing date with your local SLS Territory Sales Manager or Corning Sales Segment Specialist and receive 15% discount off a selected list of Corning CoolCell products.\*



If you order 10+ bottles then you will also receive a free pack of Corning CoolCell grippers\*\*.



For FBS registrations from February 1, 2021 through May 31, 2021

## To redeem this promotion:

Contact your Local SLS Territory Sales Manager or Corning Sales Segment Specialist and quote "FBS Focus 2021" to register. Terms and Conditions: Registration information must be received by May 31, 2021.

\*Selected list of Corning CoolCell products are available upon request from your Local SLS Territory Sales Manager or Corning Sales Segment Specialist.  
\*\*Free goods shipped separately and limited to 1 set of grippers per lab.

© 2021 Corning Incorporated. All rights reserved. 1/21 AD-SLS Focus Brochure Promo-21

# Stuart Incubated Shakers

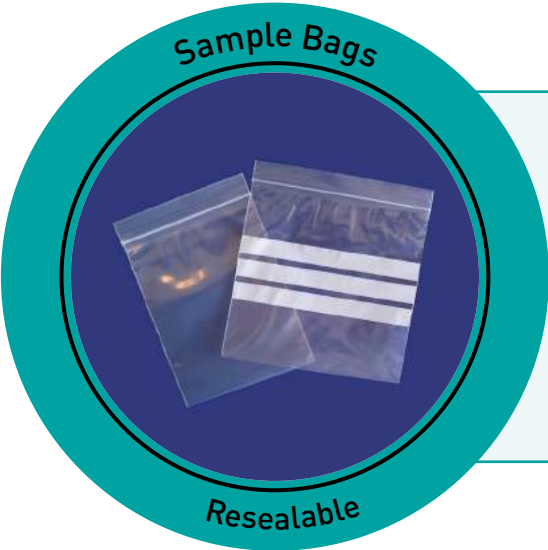


- Temperature range: Ambient +5°C to 60°C
- Versatile clamping system, securing most sizes and mixtures of flasks or bottles
- Provides an orbital shaking motion, adjustable between 30 to 300rpm with a gentle start action.
- Digital timer can be set from 1 second to 9 days
- Combined incubator shakers
- Digital display for temperature and speed
- Unique retractable platform for easy loading and unloading
- Angle adjustable accessory tube racks
- Communications enabled for external temperature measurement
- With BioCote antimicrobial protection
- Max load: 10kg

20% OFF



Code	Description	Capacity, L	Platform Dims, mm	Overall Dims, w x d x h, mm	Weight, kg	List Price £	Offer Price £
F151005	Stuart SI500 Shaking Incubator	51	335 x 335	450 x 474 x 522	30	3763.39	3011.00
F151006	Stuart SI600 Shaking Incubator	115	525 x 390	675 x 542 x 642	55	4677.40	3742.00



## PE Resealable Sample Bags

Supplied in packs of 100

Code	Dims, w x l, mm	List Price £
BAG1006	100 x 140	4.34

# OHAUS Achiever™ 5000 Overhead Stirrers

NEW



- Powerful mixing and constant speed is assured with the brushless motor and torque compensation technology - delivering accurate, controlled stirring of viscous liquids with quiet operation.
- Display: Bright LED digital display for speed, real time torque tendency LED indicator bar, and integrated timer
  - Operation: Stirring from 6 rpm to 2000 rpm with speed accuracy of 1 rpm and maximum torque from 20 Ncm to 200 Ncm depending on model, stable torque at any speed, and volume capacity ranging from 25L to 100L
  - Construction: Sealed aluminium housing with IP54 ingress protection rating, Keyless Chuck for simple, one-hand operation, brushless motor for quiet operation, and main power switch
  - Design Features: Compact design for easy handling, keyless chuck, simple knob control, lock button to prevent unintentional setting changes, full protection for overload, overtemperature and overcurrent conditions

See website for accessories



30% OFF

Code	Description	Speed Range, RPM	Capacity, L	Sample Viscosity, mPa-s	List Price £	Offer Price £
F151086	e-A51ST020	30-2000	25	10000	801.00	561.00
F151087	e-A51ST040	30-2000	25	25000	863.00	604.00
F151088	e-A51ST060	30-2000	40	50000	979.00	685.00
F151089	e-A51ST100	30-1300	100	70000	1424.00	997.00
F151090	e-A51ST200	6-400; 30-2000	100	100000	1602.00	1121.00

# Techne Prime Thermal Cyclers



20% OFF

Designed for easy programming via a touch screen interface for increased flexibility and high performance. Gradient functionality can be accessed directly through the G model whilst the base models can be upgraded to add this functionality if required at a later date.

- Compact footprint
- Colour touchscreen for ease of programming
- Temperature range 10 to 100°C,
- 3°C/sec ramp rate
- Compatible with different block sizes available separately



Code	Description	Tube Capacity	List Price £	Offer Price £
F151011	3PrimeG Gradient Thermal Cycler	48 x 0.2mL	3103.13	2483.00
F151012	Prime Thermal Cycler	96 x 0.2mL	3344.00	2675.00
F151013	Prime Thermal Cycler	384-Well Block	3344.00	2675.00

# SLS Flowgen MultiSUB Choice Tanks

2 YEARS



With two wide tray options (150 x 100 and 150 x 150mm) and multichannel pipette compatible combs for speed loading, MultiSUB Choice offers a wide degree of flexibility.

Ideal for restriction fragment analysis, sample prep or checking of high sample numbers

- Run up to 210 samples
- Low buffer volumes
- Multichannel pipette compatible combs for speed loading
- Supplied with 2 x 20 sample combs, loading guides and dams

35% OFF




See website for more electrophoresis offers!

Code	Description	Gel Dims, w x l, mm	MaxCapacity	List Price £	Offer Price £
MSCHOICE10	MultiSUB Choice 10	150 x 100	140 samples	378.00	245.00
MSCHOICE15	MultiSUB Choice 15	150 x 150	210 samples	378.00	245.00



TAE Buffer (50X)



Certified RNase and DNase Free

TAE Buffer (50X)  
Concentration for Agarose  
DNA Electrophoresis - 1L

Code	List Price £	Offer Price £
F151710	79.60	43.78

OVER  
45%  
OFF

## SLS Flowgen Mini Rapide Tank


An ultra-compact self-contained system for routine molecular biology procedures and quick checks of samples. Buffer and gel volumes kept to a minimum to maximise current and separation speed.

- A convenient self contained solution for routine agarose gel electrophoresis
- Ultra compact
- Low buffer volumes
- Multichannel pipette compatible combs for speed loading

See website for more electrophoresis offers!

Code	Dims, w x d x h, mm	Supplied with	List Price £	Offer Price £
FMMS10	150 x 150 x 40	2 x 8 sample combs 1.5mm, casting dams	302.00	196.00

TBE Buffer



Certified RNase and DNase Free

TBE Buffer 10X  
Concentration for  
DNA/RNA  
Electrophoresis - 4L

Code	List Price £	Offer Price £
F151711	76.30	41.96

OVER  
45%  
OFF

## Cleaver nanoPAC-300P Power Supply

2 YEARS

- Ideal for use with DNA/RNA (Horizontal) and protein (vertical) electrophoresis systems
- Includes a simple two step feature which allows users to set a programmable change in voltage/current/time during the run
- Enhanced in-built safety features
- A conspicuous 3-digit LED
- Alarm function
- Wipe-clean polycarbonate housing

20%  
OFF



Code	Max Voltage, V	Max Current, mA	Max Power, W	Output Pairs	Dims, w x d x h, mm	List Price £	Offer Price £
NANOPAC-300	300	400	60	2	140 x 191 x 84	342.00	273.00

## Cleaver PowerPro 300 Power Supply

2 YEARS

The PowerPro 300 is the ideal power supply for routine horizontal electrophoresis using multiSUB Mini, Midi and Choice and vertical electrophoresis using omniPAGE Mini.

- With built in pre-set protocols.
- 2.4" LCD screen
- Browse preset and saved protocols, store up to 30 programmes with up to 6 steps
- Can be operated at constant voltage, constant current or constant power and
- Pause/resume key allows any run to be temporarily halted and restarted from the same position

20%  
OFF



Code	Max Voltage, V	Max Current, mA	Max Power, W	Output Pairs	Dims, w x d x h, mm	List Price £	Offer Price £
ELE2600	300	400	60	2	215 x 335 x 104	436.00	348.00



Mettler Toledo SevenCompact™  
S210 pH Meter Bundles



The SevenCompact™ pH meter S210 is the perfect choice for a wide range of applications. Starting a measurement or calibration has never been easier, requiring only a single key-press.

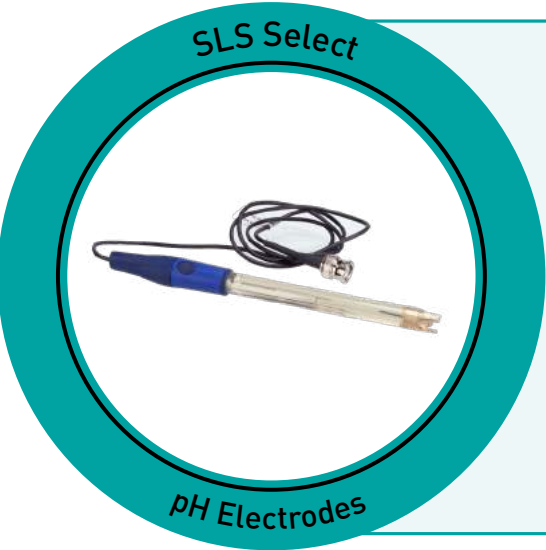
- Fast and accurate measurements
- 4.3-inch high resolution colour display
- GLP compliant
- Intelligent Sensor Management® to automatically identify the sensor upon connection
- Automatic buffer recognition
- Service offering, including IQ/OQ
- Watertight and dustproof (IP54)
- All supplied with electrode holder and protective cover

30% OFF  
with FREE  
pH Buffer  
Pack



Each bundle supplied with FREE pH Buffer Rainbow  
Kit containing 2x 250mL each pH 4.01/7.00/9.21

Code	Description	Supplied with	List Price £	Offer Price £
F151375	S210 Standard pH/mV Meter Bundle	InLab Expert Pro-ISM Probe	844.00	591.00
F151376	S210 Biotech pH/mV Meter Bundle	InLab Routine Pro-ISM Probe	885.00	620.00



SLS Select pH Electrodes

Each combination electrode is supplied with 1m length of cable and a BNC plug. All electrodes have a pH range of 0-14 and a temperature range of 0-80°C. Suitable for liquid applications.

Code	Body Material	Junction	Length, mm	Width, mm	List Price £	Offer Price £
F151369	Epoxy	Porous Teflon	120	12	52.00	36.00
F151370	Glass	Annular Ceramic	120	12	52.00	36.00

30% OFF

Thermo Scientific™ Orion Star™ A221  
Benchtop pH Meters



Record accurate and reliable pH, mV, ORP and temperature measurements with the A211 pH Benchtop Meter.

- Perform up to a five point pH calibration using automatic buffer recognition of NIST or DIN buffer groups with choice to manually enter custom buffer values
- Calibration editing option allows individual points to be fixed without a full recalibration
- Informative, easy-to-read backlit graphic display with clear onscreen instructions simplifies operation
- Capture your critical readings with measurement stability indicator and selectable read modes
- Calibration log stores ten most recent calibrations
- Non-volatile meter memory ensures your data and settings are protected, even with loss of power
- Orion Star Com software facilitates data transfer to a computer via USB or RS232 connections
- IP54-rated housing resists dust and splashes
- Each kit supplied with buffer kit, electrode stand, power adapter and computer cable



30% OFF

Code	Description	Supplied with	List Price £	Offer Price £
F151038	ROSS Difficult Sample Meter Kit	Star A211 pH meter, 8172BNWP ROSS Sure-Flow glass-body pH electrode and 927007MD stainless steel ATC probe	917.00	642.00
F151039	Standard ROSS Meter Kit	Star A211 pH meter and 8302BNUMD ROSS Ultra glass-body pH/ATC electrode	845.00	592.00
F151040	Durable ROSS Meter Kit	Star A211 pH meter and 8157BNUMD ROSS Ultra epoxy-body pH/ATC electrode	851.00	596.00
F151041	General Purpose Meter Kit	Star A211 pH meter and 9157BNMD epoxy-body pH/ATC electrode	788.00	552.00
F151042	Separate pH & ATC Sensor Meter Kit	Star A211 pH meter, 8102BNUWP ROSS Ultra glass-body pH electrode and 927007MD stainless steel ATC probe	874.00	512.00
F151043	Food & Beverage Meter Kit	Star A211 pH meter, 9165BNWP Sure-Flow epoxy-body pH electrode and 927007MD stainless steel ATC probe	833.00	583.00

Thermo Scientific™ Orion Star™ A111  
Benchtop pH Meters



Take simple, routine pH, mV and temperature measurements with the A111 Benchtop pH Meter, an easy-to-use and budget-friendly instrument for basic pH analysis in the lab.

- Perform up to a three point pH calibration with easy recall of calibration points and slope
- Large, informative screen clearly shows the main information, including pH or mV reading, temperature, meter mode, calibration information and power source.
- Thermo Scientific™ AUTO-READ™ locks in the stable reading on your screen and ready indicator alerts when readings are stable
- The IP54-rated housing can handle splashes and can be wall-mounted if table space is a problem
- Each kit supplied with buffer kit, electrode stand and power adapter



30%  
OFF

Code	Description	Supplied with	List Price £	Offer Price £
F151044	Standard Meter Kit	Star A111 pH meter and 9157BNMD epoxy-body pH/ATC electrode	574.00	402.00
F151045	TRIS-Compatible Meter Kit	Star A111 pH meter, GD9156BNWP Double Junction pH electrode and 927007MD stainless steel ATC probe	625.00	438.00
F151046	ROSS TRIS-Compatible Meter Kit	Star A111 pH meter and 8157BNUMD ROSS Ultra epoxy-body pH/ATC electrode	781.00	547.00



Corning® LSE™ Mini  
Microcentrifuge

- Includes an 8-place 1.5/2.0mL rotor with adapters for 0.5/0.4mL and 0.2mL tubes and a 4-place rotor for PCR strip tubes
- Fixed speed of 6000 rpm generates 2000 × g

Code	Dims, w x d x h, mm	List Price £	Offer Price £
F151061	148 x 174 x 122	184.19	139.00

25%  
OFF

Benchmark MC-12™  
High Speed Centrifuge



Benchmark's MC-12™ is the first and only compact microcentrifuge capable of achieving centrifugal speeds up to the critical threshold of 16,000 × g, often held as the standard for many molecular biology/DNA protocols.

- 12 tube capacity / Up to 16,100 × g
- Less than 9 in. wide
- Quick deceleration
- Whisper quiet operation



25%  
OFF

Code	Max Speed, RPM	Max Speed, x g	Dims, w x d x h, mm	Weight, kg	List Price £	Offer Price £
F151252	15500	16100	220 x 270 x 150	4.8	1319.00	989.00

Benchmark MC-24™ Touch High Speed  
Microcentrifuge with COMBI-Rotor™



Benchmark's MC-24™ Touch is the first microcentrifuge in its class to feature touch screen control. It also offers high speed and a unique COMBI-Rotor™ that accepts both standard microtubes (1.5/2.0mL) and PCR tubes/strips (0.2mL) without additional adapters.

- Full colour touch screen shows actual speed along with set and remaining time
- Up to 9 speed/time profiles can be stored in memory
- mySpin™ 1 button program recall
- COMBI-Rotor™ accepts tubes and strips
- Unique air-flow system, keeps samples cool
- Optional rotor/adapters available



35%  
OFF

Code	Max Speed, RPM	Max Speed, x g	Dims, w x d x h, mm	Weight, kg	List Price £	Offer Price £
F151253	13500	16800	230 x 305 x 197	6.4	2179.00	1416.00



OHAUS PR Analytical Balances



Designed for routine weighing applications in your workplace offering basic functionality for routine weighing applications. Designed for uncomplicated operation with easy-to-use display and interface with smart design and durable construction.

- 4 built in applications
- Backlight LCD display
- Constructed with ABS housing, removable stainless steel pan, glass draftshield with sliding top door, integrated weigh-below-hook, security bracket, and calibration lock
- User-selectable environmental filters, auto-tare, user-selectable span calibration points, software lockout and reset menu, user-selectable communication settings and data print options, overload/underload indicator, stability indicator



Code	Capacity, g	Readability, mg	Calibration	List Price £	Offer Price £
F151104	120	0.1	External	795.00	557.00
F151105	120	0.1	Internal	930.00	651.00
F151106	220	0.1	External	865.00	606.00
F151107	220	0.1	Internal	1000.00	700.00

OHAUS PR Precision Balances



Designed for routine weighing applications in your workplace offering basic functionality for routine weighing applications. Designed for uncomplicated operation with easy-to-use display and interface with smart design and durable construction.

- 4 built in applications
- Backlight LCD display
- Constructed with ABS housing, removable stainless steel pan, glass draftshield with sliding top door (on 0.001g models only), integrated weigh-below-hook, security bracket, and calibration lock
- Design features: User-selectable environmental filters and brightness settings, auto-tare, auto-dim, user-selectable span calibration points, software lockout and reset menu, user-selectable communication settings and data print options, software overload/underload indicator, stability indicator



Code	Capacity, g	Readability, g	Calibration	List Price £	Offer Price £
F151108	220	0.001	External	570.00	399.00
F151109	220	0.001	Internal	700.00	490.00
F151110	420	0.001	External	585.00	410.00
F151111	420	0.001	Internal	715.00	501.00
F151112	520	0.001	External	615.00	431.00
F151113	520	0.001	Internal	750.00	525.00
F151114	1600	0.01	External	585.00	410.00
F151115	1600	0.01	Internal	715.00	501.00
F151116	2200	0.01	External	605.00	424.00
F151117	2200	0.01	Internal	740.00	518.00
F151118	4200	0.01	External	630.00	441.00
F151119	4200	0.01	Internal	765.00	536.00
F151120	4200	0.1	External	535.00	375.00
F151121	4200	0.1	Internal	665.00	466.00
F151122	6200	0.1	External	555.00	389.00
F151123	6200	0.1	Internal	685.00	480.00



Incubating Heavy Duty Shakers

Our new shakers can do the work of multiple devices with unparalleled efficiency





SLS Lab Pro A-Series Analytical Balances



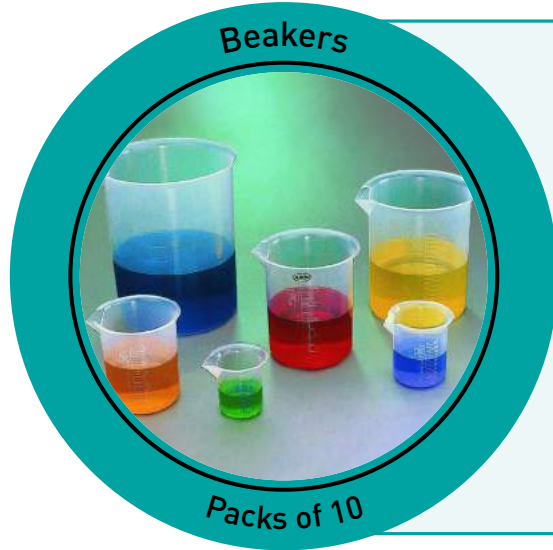
These top-loading analytical balances have a compact footprint. The breeze break has rotary sliding doors that slide behind the balance and can be removed with one touch. These features, combined with the small footprint, make the balances ideal for applications where space is at a premium.

- Compact footprint
- Reverse backlit LCD display for easy to read weighing results
- Statistical calculation function eliminates the need for a stats printer
- Standard RS-232C
- Fast, compact SHS sensor, response time ~2 seconds

40% OFF



Code	Capacity, g	Readability, mg	Calibration	List Price £	Offer Price £
F151338	102	0.1	External	856.00	514.00
F151336	102	0.1	Internal	1040.00	624.00
F151339	152	0.1	External	934.00	560.00
F151340	152	0.1	Internal	1092.00	655.00
F151341	252	0.1	External	1097.00	659.00
F151337	252	0.1	Internal	1313.00	788.00



Polypropylene Beakers

With plastic moulded graduations.

Supplied in packs of 10.

Code	Capacity, mL	List Price £
BEA60000	50	4.00
BEA60020	100	5.00
BEA60040	250	7.00
BEA60060	500	12.00
BEA60080	1000	18.50

Grant SBB Aqua Plus Boiling Unstirred Waterbaths



The SBB Aqua Plus boiling baths are robust, reliable and provide continuous 100°C operation. The range consists of four analogue models to suit a range of applications and any budget.

- Adjustable energy regulator provides steady boiling
- Constant level device maintains liquid level
- Robust and reliable design to withstand everyday wear and tear
- Simple, intuitive controls with quick and easy to set temperature
- Non-drip polycarbonate lid included as standard
- Temperature range: 0 to 100°C



15% OFF

Code	Capacity, L	Ext Dims, w x d x h, mm	Int Dims, w x l, mm	List Price £	Offer Price £
F151239	5	390 x 250 x 375	145 x 290	743.00	632.00
F151236	12	390 x 385 x 440	315 x 290	803.00	683.00
F151237	18	390 x 600 x 445	495 x 290	865.00	735.00
F151238	26	390 x 600 x 445	495 x 290	934.00	794.00

Grant Aqua Pro Shaking Water Baths



The Aqua Pro shaking water bath range offers exceptional temperature performance and usability. With three bath models to choose from, there is a shaking water bath to meet basic and demanding applications in research, industry and life sciences. Includes clear polycarbonate lid and universal tray included as standard, other shaking trays sold separately.

- Temperature range: ambient +5 to 99°C
- Stability: ±0.1°C
- Digital control/LED display
- Linear shaking speed 20 - 200 rpm
- Adjustable shaking speed and stroke length (OLS26)

15% OFF



Code	Model	Capacity, L	Shaking Mode	Ext Dims, w x d x h, mm	Int. Dims, w x d, mm	List Price £	Offer Price £
F151240	OLS26	26	Orbital + Linear	325 x 565 x 335	380 x 235	2589.00	2201.00
F151241	LSB12	12	Linear	275 x 360 x 335	240 x 235	1864.00	1584.00
F151242	LSB18	18	Linear	275 x 595 x 335	420 x 235	2061.00	1752.00

SLS Lab Pro Safevac  
Aspiration System



Designed for laboratory waste recovery and separation of liquid and solid. Can be widely used in cell culture, DNA extraction, microplate waste removal, and any other liquid separation or recovery.

- Vacuum power can be set to different levels to achieve 1–15mL/s aspirating speed
- Sensitive level sensor to prevent liquid overflow during operation
- Waste bottle, tubing and handle are fully autoclavable
- Lid, tubing and handle are easy for disassembling, cleaning and autoclaving
- Wide range of adapters to fit tubes and microplates



Code	Vacuum Range, mbar	Vacuum Speed, mL/S	Volume, L	Dims, w x d x h, mm	List Price £	Offer Price £
F151283	0-600	1-15	4	180 x 240 x 450	1150.00	575.00

Epredia Shandon MX35  
Ultra - Low Profile Microtome Blades



Code	Blade Angle °	Pack	List Price £	Offer Price £
F151367	34	50	74.00	55.00

SLS Lab Basics Inverso TC100  
Inverted Microscope



Ideal for the typical working laboratory and is built to a high-quality specification. It is robust enough to withstand the rigours of constant daily use and with a quintuple position nose-piece fitted as standard, it is ideally suited for multiple observation techniques and/or magnifications.

- Trinocular head inclined at 45°
- Eyepieces: 10/20mm wide field
- Objectives: 4X, 40X plan-achromatic LWD/10X, 20X, 40X Phase Contrast
- Condenser: NA 0.3 (removable), working distance 72mm
- Stage: 160 x 250mm with additional mechanical stage (2 interchangeable stage plates) stage extending board
- Focusing: coaxial coarse and fine
- Illumination: 3W LED



Code	Description	List Price £	Offer Price £
F151126	SLS Lab Basics Inverso TC100 Inverted Microscope	3319.00	2700.00

SLS Lab Basics Tablet  
Microscope Camera



Tablet camera especially designed for microscopy applications. Comes with a high-definition 9.7" colour LCD touchscreen and is equipped with software that allows the user to preview an image, set the white balance, capture images and videos as well as having measurement and annotation capabilities.

- Integral C-mount fitting
- RK3066 dual-core 1.5Hz CPU touch screen operation, can be used as a small computer
- Keyboard and mouse can also be used to operate
- Includes Wi-Fi and Bluetooth wireless networking for easy file exchange
- Storage: external SD memory card - up to 32GB



Code	CPU	Memory	Camera	List Price £	Offer Price £
F151127	RK3066 dual-core 1.5Hz	ROM 2GB; RAM 1GB DDR3	15fps at 1024 x 768; 1/2.5 (4:3) 5Mpx CMOS	928.00	850.00



# Jenway Genova Bio Life Science Spectrophotometers

This spectrophotometer measures across a UV/visible wavelength range of 198 to 800nm, with a narrow spectral bandwidth of 3nm.

The TrayCell is a fibre optic cuvette which can be used with as little as 0.7µL of sample. The cuvette is supplied with two caps which give path lengths of either 1mm or 0.2mm, thus creating a "virtual dilution" of 1:10 or 1:50 of the sample when compared to a measurement with a standard 10 mm cuvette.

- Pre-programmed for DNA, RNA and protein analysis
- Compatible with ultra-micro, semi-micro, micro and macro cuvettes
- Scanning diode array technology
- Colour touchscreen navigation

2 YEARS

20% OFF

- Small footprint and lightweight (<3kg)
- Fast scan speed
- Multiple USB ports for data storage and printer connectivity

Code	Description	List Price £	Offer Price £
F151001	Genova Bio Life Science Spectrophotometer with Micro-Cuvette Holder	3096.02	2477.00
F151002	Genova Bio Life Science Spectrophotometer with Micro-Cuvette Holder and TrayCell Accessory	6039.89	4832.00

# BioDrop+ Microvolume UV/Vis Spectrophotometers

BioDrop spectrophotometers come with intuitive and easy to use software and a USB port for PC control and data export. BioDrop Resolution software is pre programmed for DNA, RNA, oligo, fluorescent dye labelling efficiency, Tm calculation, quick measurements and colourimetric protein methods (with standard 10mm cuvette only).

- Light source: pulsed xenon lamp with a 3 year warranty
- Colour Touchscreen
- Wavelength range, nm: 190 - 1100
- Absorbance range: 0.3A - 2.5A
- DNA detection limit (ng/µL): 1

2 YEARS

20% OFF

- Micro-volume port - simply pipette 0.5µL or more in the centre, measure, then wipe clean; Duo+ also comes with a standard 10 x 10mm cuvette port
- Output: USB port
- Dims, mm, 260 x 420 x 185

Code	Description	List Price £	Offer Price £
F151128	BioDrop µLite+ Spectrophotometer with 0.5mm Micro-Volume Port	6490.00	5192.00
F151129	BioDrop Duo+ Spectrophotometer with 10mm Cell Holder and 0.5mm Micro-Volume Port	7571.00	6057.00
F151130	BioDrop µLite+ Spectrophotometer with 0.5mm Micro-Volume Port and Built-In Printer	6869.00	5495.00

# Welch MPC Chemical Duty Vacuum Filtration Diaphragm Pump

Suitable for vacuum filtration and desiccation applications. The standard equipment of a high accuracy regulator allows for soft start filtration, to prevent damage to the filter membrane, whilst allowing a powerful final vacuum level to be achieved for fast results. A built-in catch pot prevents accidental ingestion of liquid into the pump.

- Chemical resistant
- Oil free
- Two heads, one stage
- Ultra quiet operation and long service life

Code	Model	Flow Rate, L/min	Ultimate Vacuum, mbar	Dims, w x d x h, mm	List Price £	Offer Price £
F151714	MPC090E	15	100	144 x 198 x 244	595.00	476.00

1 YEAR

20% OFF

# Welch MPC Chemical Duty Diaphragm Vacuum Pumps

Welch MPC chemical duty diaphragm vacuum pumps have been developed specifically to meet the requirement for oil-free vacuum generation. Their low weight and excellent ergonomics, make Welch diaphragm pumps the first choice for most laboratory applications. MPC models use PTFE and other fluorinated plastics for the wetted parts to allow aggressive solvent and acid vapours to be pumped.

- Analytically pure, oil free vacuum
- User friendly
- Lightweight, rugged design
- Designed for continuous operation
- Maintenance-free drive system and proven long diaphragm life
- Minimal operation vibration

Code	Model	Flow Rate, L/min	Ultimate Vacuum, mbar	Dims, w x d x h, mm	List Price £	Offer Price £
F151371	MPC105T	20	2	235 x 189 x 277	1611.00	1375.00
F151372	MPC095Z	15	5	235 x 189 x 277	1081.00	845.00

FREE Dial Gauge Regulator worth £236



INTEGRA Biosciences DOSE IT Peristaltic Pump

DOSE IT the peristaltic pump which makes dispensing culture media, buffers and other solutions easy and efficient. Suitable for a broad range of dose volumes DOSE IT can dispense with high accuracy since it is compatible with tubing from 1mm bore for small doses to 8mm tubing for high-throughput pumping. Supplied with 1x tubing (inner Ø 4mm, length 2.5m), 2x aspiration/dispensing tubes (length 10cm, stainless steel, one end dented), and 1x aspiration/dispensing tube (length 35cm, stainless steel, one end dented).



20% OFF



INTEGRA

Code	Dose Volume, mL	Flow rate, mL/min	Weight, kg	Dims, w x d x h, mm	List Price £	Offer Price £
F151368	0.1-9999	0.6-5000	3.5	191 x 203 x 210	3108.00	2486.00

LEEC Culture Safe CO<sub>2</sub> Incubators

- Electro-polished, one-piece chamber made from high grade 304 stainless steel
- Anti-bacterial powder coat paint finish
- Inner glass door and side access port
- 160°C decontamination option (P190D); 200°C sterilisation (S models)
- Simple control system on Precision models; touch screen controller on Touch models
- No internal fan (less risk of contamination)
- 6 sided direct heating system with high performance insulation
- Temperature range: +5 to +60°C; CO<sub>2</sub> range 0-20%



30% OFF



LEEC

Code	Alt Ref	Model	Capacity, L	Int Dims, w x d x h, mm	Ext Dims, w x d x h, mm	List Price £	Offer Price £
F151200	P50	Precision	50	402 x 300 x 402	534 x 460 x 736	3909.00	2736.00
F151198	P190	Precision	190	634 x 440 x 686	765 x 740 x 862	4522.00	3172.00
F151199	P190D	Precision	190	634 x 440 x 686	765 x 740 x 862	4763.00	3334.00
F151203	T50S	Touch	50	402 x 300 x 402	534 x 460 x 717	4830.00	3381.00
F151201	T190	Touch	190	632 x 440 x 686	765 x 734 x 862	5940.00	4158.00
F151202	T190S	Touch	190	632 x 440 x 686	765 x 734 x 862	6377.00	4464.00

LTE IP Series Incubators



LTE

The IP Series of incubators offers maximum flexibility and unparalleled performance with fast heat-up times, almost undetectable overshoot and superb accuracy make the IP Series a class-leading product.

**U models:** uni-program system offers single temperature selection and control. Following a mains power failure, the controller will automatically reinstate.

**M models:** multi-program controller allows up to 8 multiple-step cycles to be stored in the memory. It incorporates a selectable temperature ramping function, which allows controlled temperature rise and fall rates to be programmed into a cycle. At the end of a program sequence, the controller can be programmed to stop or repeat the sequence again. Following a mains power failure, M models have 3 recovery options.

- Temperature range 30 to 80°C
- Digital display of set and actual temperatures (and programmed features on M models)
- Class 2 over-temperature protection
- Stainless steel radiused interiors
- Anti-bacterial epoxy powder coating
- Special promotional 5 year warranty included

10% OFF  
with 5 YEAR  
PROMOTIONAL  
WARRANTY



Code	Model	Capacity, L	Air Circulation	Shelf Positions	Int Dims, w x d x h, mm	Ext Dims, w x d x h, mm	List Price £	Offer Price £
F151220	U	60	Natural Convection	2/6	400 x 400 x 400	735 x 575 x 590	1560.00	1404.00
F151221	U	60	Fan Circulation	2/6	400 x 400 x 400	735 x 575 x 590	1720.00	1548.00
F151222	M	60	Natural Convection	2/6	400 x 400 x 400	735 x 575 x 590	2064.00	1858.00
F151223	M	60	Fan Circulation	2/6	400 x 400 x 400	735 x 575 x 590	2253.00	2028.00
F151224	U	100	Natural Convection	2/8	500 x 400 x 500	835 x 575 x 690	1702.00	1532.00
F151225	U	100	Fan Circulation	2/8	500 x 400 x 500	835 x 575 x 690	1875.00	1688.00
F151226	M	100	Natural Convection	2/8	500 x 400 x 500	835 x 575 x 690	2222.00	2000.00
F151227	M	100	Fan Circulation	2/8	500 x 400 x 500	835 x 575 x 690	2432.00	2189.00
F151228	U	150	Natural Convection	2/10	500 x 500 x 600	835 x 675 x 790	2189.00	1970.00
F151229	U	150	Fan Circulation	2/10	500 x 500 x 600	835 x 675 x 790	2405.00	2165.00
F151230	M	150	Natural Convection	2/10	500 x 500 x 600	835 x 675 x 790	2822.00	2540.00
F151231	M	150	Fan Circulation	2/10	500 x 500 x 600	835 x 675 x 790	3021.00	2719.00
F151232	U	250	Natural Convection	3/18	500 x 500 x 1000	835 x 675 x 1190	2807.00	2526.00
F151233	U	250	Fan Circulation	3/18	500 x 500 x 1000	835 x 675 x 1190	3023.00	2721.00
F151234	M	250	Natural Convection	3/18	500 x 500 x 1000	835 x 675 x 1190	3375.00	3038.00
F151235	M	250	Fan Circulation	3/18	500 x 500 x 1000	835 x 675 x 1190	3623.00	3261.00

LMS Series 4 Cooled Incubators

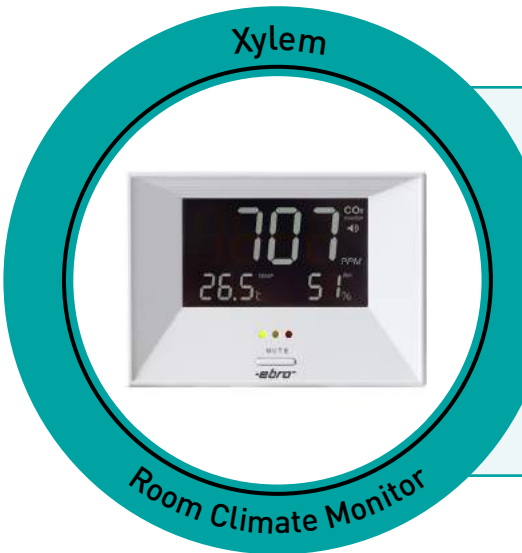


Offering reliable and accurate temperature control, operating between -10°C to +50°C. The design of these cabinets facilitates the addition of optional extras to provide even greater flexibility for individual applications. The range comprise of 2 cabinet sizes, 600 and 1200L capacity. These cabinets offer the ability to cope with large workloads and the flexibility with the addition of optional extras to suit most applications.

- Digital set/display
- Fan-assisted circulation
- Hermetically-sealed refrigeration system
- Self-evaporating condensation drip tray
- Preset overheat protection
- For 220/240V, single phase supply
- Stainless steel interior and exterior
- A full range of upgrades including fruit fly modification are also available to suit your requirements, please enquire for details



Code	Capacity, L	Control	No. of Shelves	Ext Dims, w x d x h, mm	List Price £	Offer Price £
F151149	600	Single Set Point	5	800 x 900 x 2080	5178.00	4401.00
F151150	600	Fully Programmable	5	800 x 900 x 2080	5543.00	4712.00
F151151	1200	Single Set Point	10	1500 x 900 x 1080	6890.00	5857.00
F151152	1200	Fully Programmable	10	1500 x 900 x 1080	7205.00	6124.00



Xylem Ebro RM 100 Room Climate Monitor

The room climate monitor RM 100 measures the air temperature, humidity and CO<sub>2</sub> value.

Code	Dims, w x d x h, mm	Weight, g	Display	List Price £	Offer Price £
F151131	137 x 51 x 99	200	LCD	138.00	90.00



Xylem Ebro EBI 20 Temperature Logger Sets

Code	Description	List Price £	Offer Price £
F151139	TF Temperature Data Logger with External Sensor (Food-Logger)	210.00	147.00
F151146	T1 Temperature Data Logger with Internal Sensor	150.00	97.00
F151147	TE1 Temperature Data Logger with External Penetration Probe	188.00	132.00
F151148	TH1 Humidity/Temperature Data Logger with Internal Sensor	173.00	121.00



Liebherr LGv5010 Mediline Freezer



- Features no frost technology
- Temperature is accurate to 0.1°C and shown in real time
- Advanced comfort digital electronic temperature display
- Visual & audio fault warning alarms (high/low temp & door open)
- Door lock
- Self-closing door
- Environmentally friendly refrigerant used
- Comes with 8 removable drawers and 2 removable baskets



Code	Temp Range, °C	Capacity, L	Dims, w x d x h, mm	List Price £	Offer Price £
F151665	-9 to -35	478	747 x 750 x 1844	2869.00	2008.00





Liebherr LKv5710 Medline Refrigerator



- Temperature is accurate to 0.1°C and shown in real time
- Forced air cooling, automatic defrost
- Electronic controller (which can be set in the temperature range)
- Digital temperature display
- Visual & audio fault warning alarms (high/low temp & door open)
- Integrated data memory
- Door lock
- Self-closing door
- Environmentally friendly refrigerant used
- Five adjustable shelves, 60kg loading capacity each shelf

30% OFF



LIEBHERR

Code	Temp Range, °C	Capacity, L	Dims, w x d x h, mm	List Price £	Offer Price £
F151666	+3 to +16	583	751 x 750 x 1844	2199.00	1539.00

Liebherr LCexv4010 Medline Fridge Freezer



- Forced air cooling, automatic defrost
- Digital temperature display
- Visual & audio fault warning alarms (high/low temp & door open)
- Door lock
- Self-closing door
- Environmentally friendly refrigerant used
- Five adjustable fridge shelves, 40kg loading capacity each shelf and three removable freezer drawers

30% OFF



LIEBHERR

Code	Temp Range, °C	Capacity, L (Freezer)	Capacity, L (Fridge)	Dims, w x d x h, mm	List Price £	Offer Price £
F151667	-9 to -30; +3 to +16	107	254	601 x 618 x 2003	2269.00	1588.00

SLS Lab Pro PurA-Q+ Type 1 & 2 Water Purification Systems



PurA-Q+ combines ultrapure (type 1) and DI (type 2) water in one unit saving you money and space. The system is fed from mains water and produces Type 2 DI water up to 160L/day into a reservoir size of your choice. Choose a Type 2 production rate to suit your requirements, 10 or 20L/hour. The PurA-Q+ also produces Type 1 Ultrapure water at 18.2 MΩ-cm swiftly on demand from the integrated dispenser or optional remote dispenser at up to 2L/min. The output can either be continuous or volumetrically dispensed with an intuitive and simple software control.

- Quick-change consumables with a realistic cost (first pack included)
- Novel recirculation loop extends the life of membranes and cartridges
- Bench, wall or reservoir top mounting
- Choice of storage reservoir: 30, 60L or 100L (required)
- Comprehensive monitoring of water quality including TOC (Total Organic Carbon)
- Integral boost pump
- Ultrafiltration option to remove pyrogens (bacterial endotoxins) and nucleases

46% OFF



Code	Model	Type 2 Water Rate. L/hr	Dispenser	Ultrafiltration	List Price £	Offer Price £
F151352	+10	10	Integral	No	8519.00	4590.00
F151353	+10 R	10	Remote	No	8914.00	4800.00
F151351	+10 UF	10	Integral	Yes	8497.00	4715.00
F151354	+10 UF R	10	Remote	Yes	9149.00	4925.00
F151355	+20	20	Integral	No	9268.00	4995.00
F151356	+20 R	20	Remote	No	9674.00	5210.00
F151357	+20 UF	20	Integral	Yes	9514.00	5125.00
F151358	+20 UF R	20	Remote	Yes	9909.00	5335.00

Reservoirs

Code	Capacity, L	Dims, w x d x h, mm	List Price £	Offer Price £
F151364	30	405 x 230 x 495	780.00	435.00
F151365	60	405 x 330 x 495	913.00	510.00
F151366	100	480 x 360 x 810	1340.00	740.00

Astell SQUARE Autoclaves



Astell’s SQUARE autoclave range offers the choice of seven different chamber sizes ranging from 125 to 735 litres and various heating, loading and door options. The SQUARE range is suitable for sterilising glassware, fluids, waste and porous type loads (subject to configuration). Astell’s SQUARE autoclaves are regularly used in scientific research laboratories, production process manufacturing, veterinary and medical healthcare, food and beverage industries and many more.

- 5.7” colour touchscreen controller
- 7 standard chamber sizes available
- Choice of three heating methods: direct steam, heaters in chamber or with steam generator (subject to chamber size and load type)
- Single or double doors (pass through)
- Automatic or manual door operation
- Full range of options and accessories

FREE Load Sense Process Timer probe, Air Ballast feature and Morrison Discard Container



15% OFF  
with FREE  
Accessories  
Worth £1645

Code	Volume, L	Doors	Door Mech.	Steam Generator	Chamber Dims, w x d x h, mm	Overall Dims, w x d x h, mm	List Price £	Offer Price £
F151153	125	1	Auto or Manual	24kW	500 x 500 x 500	780 x 1300 x 2000	38800.00	32980.00
F151154	216	1	Auto or Manual	24kW	600 x 600 x 600	880 x 1400 x 2000	42045.00	35738.00
F151155	250	1 or 2	Auto or Manual	24kW	500 x 1000 x 500	880 x 1750 x 2000	42475.00	36103.00
F151156	360	1 or 2	Auto	24kW	600 x 1000 x 600	880 x 1750 x 2000	42905.00	36469.00
F151157	490	1 or 2	Auto	48kW	700 x 1000 x 700	1250/1500 x 1700 x 2000	45145.00	38373.00
F151158	612	1 or 2	Auto	48kW	700 x 1250 x 700	1250/1500 x 2000 x 2000	49395.00	41986.00
F151159	735	1 or 2	Auto	48kW/72kW	700 x 1500 x 700	1250/1500 x 2300 x 2000	55885.00	47502.00

Syngene NuGenius Gel Documentation System



NuGenius is a compact gel documentation workstation, which uses a choice of UV, blue or white lighting options giving the flexibility to image fluorescent and visibly stained gels at the workstation. A groundbreaking 5 million pixel CCD camera gives superb pixel resolution and unrivalled sensitivity, and offers a maximum viewing area of 20 x 24cm which is very large for such a small, compact unit.

- Compact workstation - plenty of bench space for your research
- Complete with built-in processor, touch screen and NuGenius software
- Easily capture and edit images on screen without a computer
- Motor driven zoom lens - automatic set up for easy image capture
- 5m pixel camera - resolves close bands and detects nanogram amounts

Save over  
£1,500



Code	List Price £	Offer Price £
F151660	7128.00	5700.00

FREE transilluminator (20 x 24cm, 302nm), visible light converter, UV to blue light converter and NuGenius network kit



Syngene is a world-leading supplier of gel documentation (gel doc) systems for rapid, accurate imaging and analysis. We are specialists in:

- Gel Documentation
- Fluorescence imaging
- Western blot imaging
- Multiplex fluorescence westerns
- Visible protein imaging

- Featuring
- User friendly software and hardware
  - Free of charge software updates
  - 3 year warranty
  - UK manufacturing

**NuGenius - Integrated imaging system for DNA and protein analysis and gel documentation.**

**G:BOX Chemi XRQ - gel doc system with high resolution, cooled camera and application for fluorescence and chemiluminescence applications**

\*For info on whole Syngene range contact SLS



Anvajo fluidlab R-300 Cell Counter/Spectrometer with FREE Accessories

1 YEAR NEW

The compact fluidlab R-300 combines a full-fledged spectrometer with an automatic cell counter. Its intuitive handling and precise measurements make the fluidlab R-300 the laboratory instrument of the future. With standard cuvettes as well as with glass sample carriers from anvajo a variety of analyses such as absorbance, automatic cell counting and staining-free viability measurements can be performed.

fluidlab R-300 analytical device for:

- Cell Counting in the range from 3-80 µm
- Viability measurement in the range from 8-80 µm
- Spectrometric scatter and absorbtion measurements in the wavelength range from 375 - 700 nm
- Supplied with 3 packs of 25 glass sample carriers (75 in total) and a pack of 12 sensor cleaners - for FREE (worth over £150!)



Code	Supplied with	List Price £
F151692	Anvajo fluidlab R-300 with 3 Packs of Acella 100µm Sample Carriers and 1 Pack of Sensor Cleaners	3630.00
F151693	Anvajo fluidlab R-300 with 3 Packs of Acella 50µm Sample Carriers and 1 Pack of Sensor Cleaners	3630.00
F151694	Anvajo fluidlab R-300 with 3 Packs of Acella 20µm Sample Carriers and 1 Pack of Sensor Cleaners	3630.00

Blue-Ray Biotech EzScope 101 Live Cell Imaging System

1+ YEAR NEW

- Incubator Live View - Designed to be used inside the incubator, without the need to remove your cells from incubator to enhance culture quality control
- Minimises Experimental Variations - Up to four units of EzScope can be setup in the same incubator and controlled by one computer
- Exceptional Image Quality - Adopts high contrast brightfield optical configurations, coupled with precise motorised focusing, and two interchangeable magnifying objective lenses
- Easy Image Editor - Captures and edits images easily with EzCapture software
- Comes supplied with 10x objective lens. 20x lens, optional mechanical XY stage and adapters for slides and flasks available separately



Code	Operating Conditions	Dims, w x d x h, mm	Weight, kg	List Price £
COU2050	0 to 42°C, 5 to 95% RH non-condensing	225 x 231 x 205	2	4193.00

Blue-Ray Biotech Gradient TurboCycler 2 with 96-Well Sample Block

2+ YEARS NEW

- Flexible ramp rate control from 0.1 to 5.5°C/s
- Fully adjustable lid temperature can be set between 35 and 120°C
- Gradient optimisation range from 1 to 30°C
- Sensitive 7" capacitive touchscreen enables easy operation even with laboratory gloves
- WiFi function allows monitoring of your PCR status remotely anytime on your mobile device via the free TurboApp
- Compatible with regular profile or low profile 0.2mL PCR tube, strip, non-skirted, semi-skirted and full-skirted 96-well plate



Code	Dims, w x d x h, mm	List Price £
MOL2702	245 x 415 x 225	3137.00

# Blue-Ray Biotech TurboQ Real-Time PCR Machine with Laptop

1+ YEAR NEW



Fixed 96-well, 4-channel optics enable multiplex detection up to 4 targets per well. CCD base detection system for fast and uniform detection. Laptop included.

- 4 Optical Channels: Detects up to 4 targets in one well
- CCD-Based Detection System: The entire plate can be detected at once to eliminate reaction-time differences
- Motorised Plate Carrier Tray: Plate in/out with a simple click, enables automation integration in the future
- ±0.25°C Block Temperature Control Accuracy: Ensures experiment condition stability and eliminates uncertainty
- Software with Complete Analysis Functions: No need to purchase extra analysis modules
- Sample block: Fixed 96-well, compatible with regular profile 0.2 ml PCR tube, strip, non-skirted and semi-skirted 96-well plate



Code	Dims, w x d x h, mm	List Price £
MOL2700	354 x 455 x 567	24995.00

# Labogene Mars Class II Cabinets

5 YEARS NEW

The Mars safety cabinets take full advantage of the latest innovative energy-efficient fans and optimised air flows, contributing to lower energy consumption and reduction of the noise level.

Lower energy consumption also results in less heat transmission, both into the work chamber and to the laboratory environment, contributing significantly to reduced overall energy costs.

- Dual filter class II microbiological safety cabinets
- New innovative EC fans and optimised air flow, contributing up to a 6 dB(A) reduction in the noise level
- 110 mm HEPA filters with efficiency at 99,999 % against 0.3µm particles, ensuring a clean sterile work chamber environment
- Panoramic front & side windows for ultimate supervision and glare-free lighting
- Manufactured & tested in compliance with EN 12469
- Supplied with UV Light - LED Light - Double HEPA Filter, Support Stand and Pair of Electrical Sockets



Code	Alt Ref	Width, mm	List Price £
CAB1032	MARS 900	900	6875.00
CAB1034	MARS 1200	1200	7201.00
CAB1036	MARS 1500	1500	8140.00
CAB1038	MARS 1800	1800	8770.00

# Labogene CoolSafe 4L Freeze Dryer Bundles

## CoolSafe Pro

- Digital display of the condenser temperature and pressure
- 4-litre condenser capacity and -110°C temperature

## CoolSafe Touch

- New touchscreen controller with regulation of temperature, pressure and time
- Freeze-drying with programming and storage of protocols for full research and method development
- 4-litre condenser capacity and -110°C temperature

Promotional Bundle complete with acrylic plate, 200mm diameter polycarbonate chamber with 2 unheated stainless steel shelves and 30L/min Vacuum pump RZ 2.5 - Save £1,227!

Promotional Bundle complete with 300mm diameter acrylic chamber with 5 x heated stainless steel trays and 30L/min Vacuum pump RZ 2.5 - Save £5,349!



Save up to £5,349

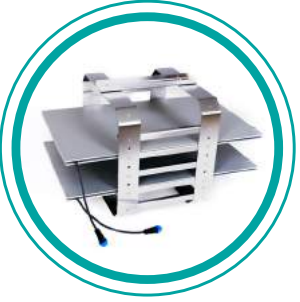
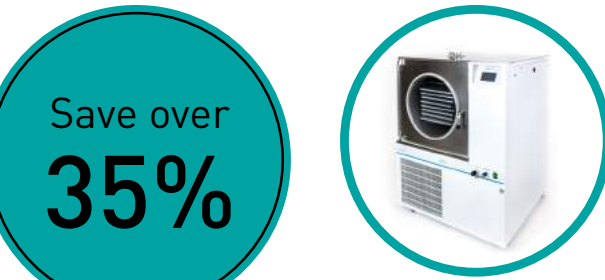
Code	Description	List Price £	Offer Price £
F151699	CoolSafe Pro 110-4 Freeze Dryer Complete Bundle	9512.00	8285.00
F151703	CoolSafe Touch 110-4 Freeze Dryer Complete Bundle	16859.00	11510.00

# Labogene CoolSafe Superior Touch 95-80 Freeze Dryer Bundle

- Touchscreen controller and display of temperature, pressure and time during operation
- Large capacity, seamless stainless steel condenser with external cooling coils and electric de-icing as standard
- Front-loading for ease of access, loading and supervision
- Fully automatic control of pre-freeze in 5 steps - and primary and secondary drying in 10 steps. Controlling shelf temperature from -80°C to + 50°C for correct ice crystal formation and freeze drying
- Condenser ice capacity of max. 10kg/24 hours
- The chamber can accommodate from 2 to 8 electrically heated shelves with trays, giving a total area ranging from 0.3m² to 1.2m²

Promotional Bundle complete with bulk rack including 2 x heated shelves and 105 L/min Vacuum pump RZ 6

Save over 35%



Code	List Price £	Offer Price £
F151707	47438.00	29682.00



SCIENTIFIC LABORATORY SUPPLIES PRESENTS

# FOCUS

EXCLUSIVE OFFERS & EXCITING NEW PRODUCTS

BioDrop Resolution software is pre-programmed for DNA, RNA, oligo, fluorescent dye labelling efficiency, T<sub>m</sub> calculation, quick measurements and colourimetric protein methods

See page 38...

20%  
OFF



Scientific Laboratory Supplies  
Wilford Industrial Estate  
Ruddington Lane  
Nottingham, NG11 7EP  
United Kingdom

t. (Eng & Wales) 0115 982 1111  
t. (Scotland) 01236 431 857

[www.scientificlabs.co.uk](http://www.scientificlabs.co.uk)

## **BioDrop+ Microvolume UV/Vis Spectrophotometers**

Comes with intuitive and easy to use software and a USB port for PC control and data export

SPRING EDITION

2021