



Start Separation at Ease

With the complete Eppendorf Centrifuge Range

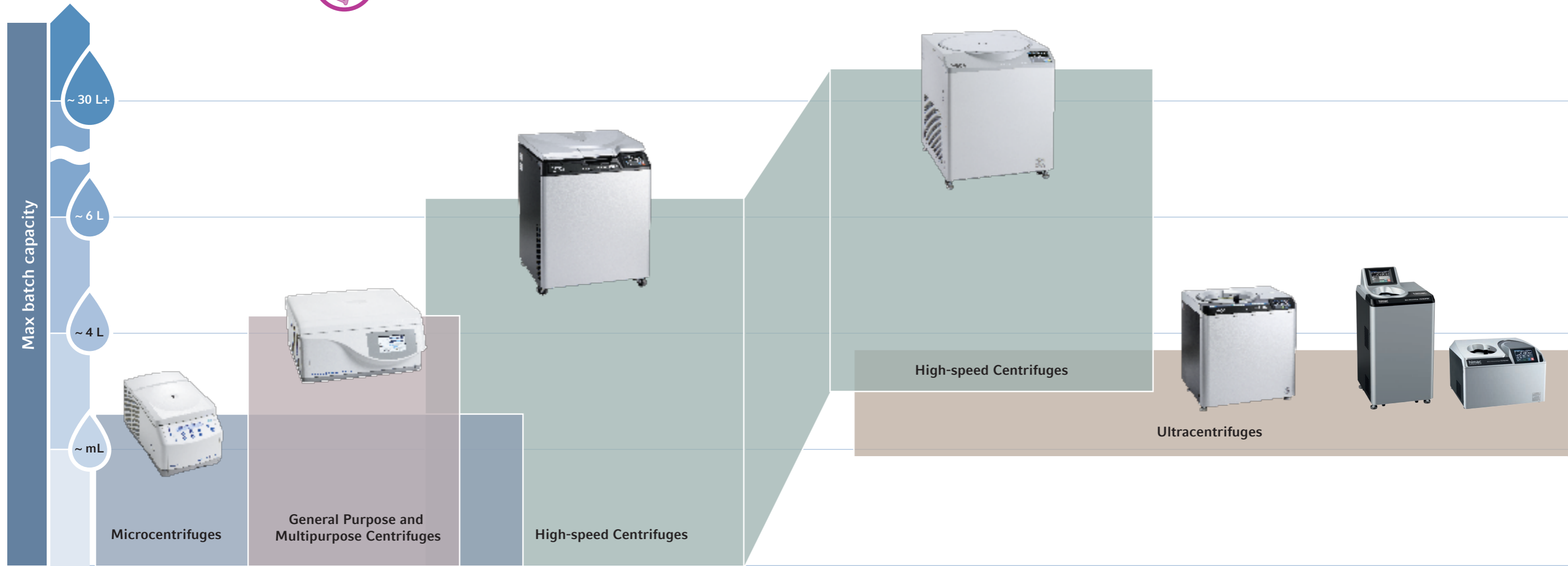
Mammalian, Bacteria, Yeast, Algae, Plant cells

Mitochondria, Lysosomes, Nuclei

Exosomes, Golgi, Virus, Peroxisomes

Ribosomes, Macromolecules

DNA, RNA, Proteins

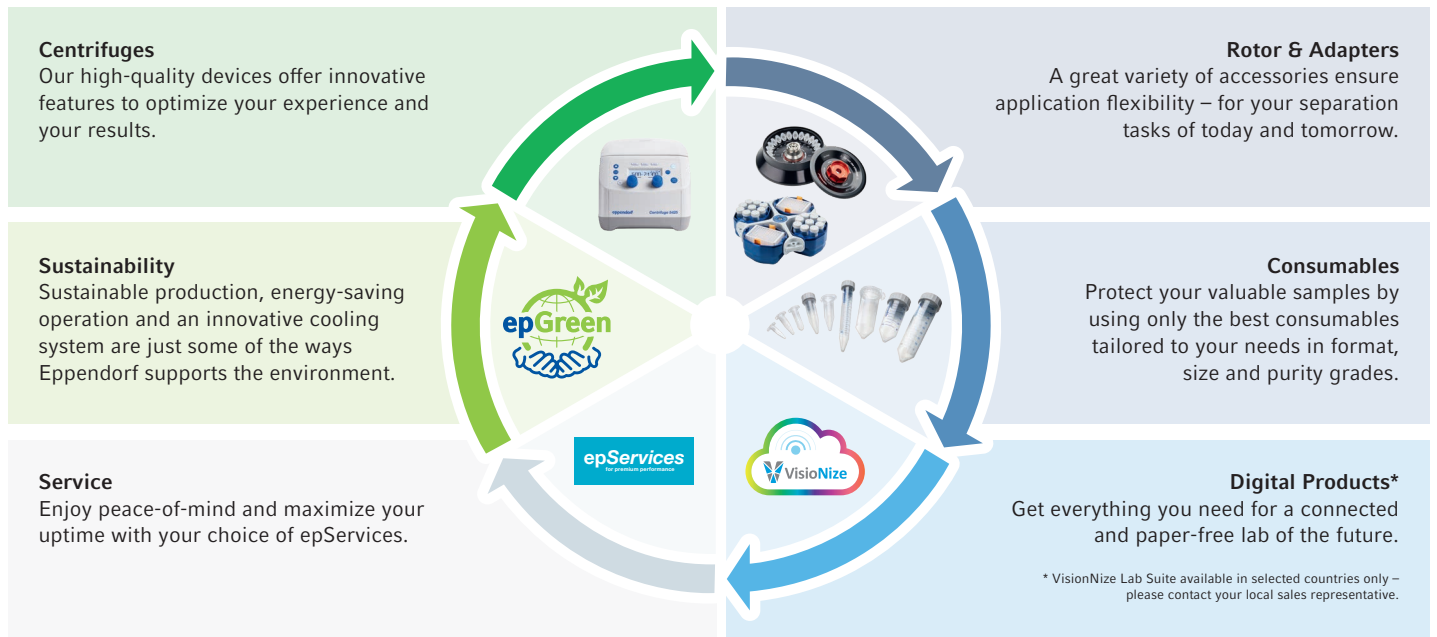


Solution	Microcentrifuges	General Purpose Centrifuges	Multipurpose Centrifuges	High-speed Centrifuges	Ultracentrifuges
	<ul style="list-style-type: none"> > 9 variants of refrigerated and non-refrigerated devices to support tube to plate formats > Quiet, convenient and compact models that fit your laboratory workflows 	<ul style="list-style-type: none"> > Suitable for low-to- mid-throughput research and cell culture applications > Choices for refrigerated, ambient and critical biological temperature requirements 	<ul style="list-style-type: none"> > For medium-to-high- capacity biological applications > Versatile and flexible to accommodate different vessel formats from 0.2 mL to 1,000 mL 	<ul style="list-style-type: none"> > Complete everyday tasks and harvesting with up to max. 6 L capacity with Centrifuge CR22N > Purify tiny particles at high-speeds of up to 110,000 x g and large volumes with continuous flow rotor with Centrifuge CR30NX 	<ul style="list-style-type: none"> > Versatile CP-NX Ultracentrifuge Series with Automatic Rotor Life Management System (RLM) digitally tracks rotor run times, eliminating the need for manual logs > Two compact micro-ultracentrifuge options: floorstanding CS150FNX or benchtop CS150NX with speeds of up to 1,050,000 x g

Your Challenges Are Multidimensional – So Are Our Offerings

In your daily research work, you will encounter a variety of challenges. That’s why we continuously work to understand your unique issues and provide you with tailored solutions to suit your needs, so you can spend more time focusing on

your research. Our solutions go beyond the centrifuge itself to provide everything you need to ensure the best performance and best results every day.



Your local distributor: www.eppendorf.com/contact
Eppendorf SE · Barkhausenweg 1 · 22339 Hamburg · Germany
eppendorf@eppendorf.com · www.eppendorf.com

www.eppendorf.com